



2720 S. Washington Ave

Lansing, Michigan 48910

Property Highlights

- Possible landlord incentives include up to 6 months rent abatement
- 3 private exam rooms with sinks
- 2 private offices
- 2 unisex restrooms in-suite
- Break room
- Reception desk with check-in/check-out window
- Spacious waiting room
- Private suite entrance in addition to the common area entrance
- Located across the street from McLaren Greater Lansing Hospital
- Situated on CATA bus route

Offering Summary

Lease Rate:	\$14.00 SF/yr (MG)
Building Size:	20,050 SF
Available SF:	2,071 SF

For More Information



Jeffrey Branch

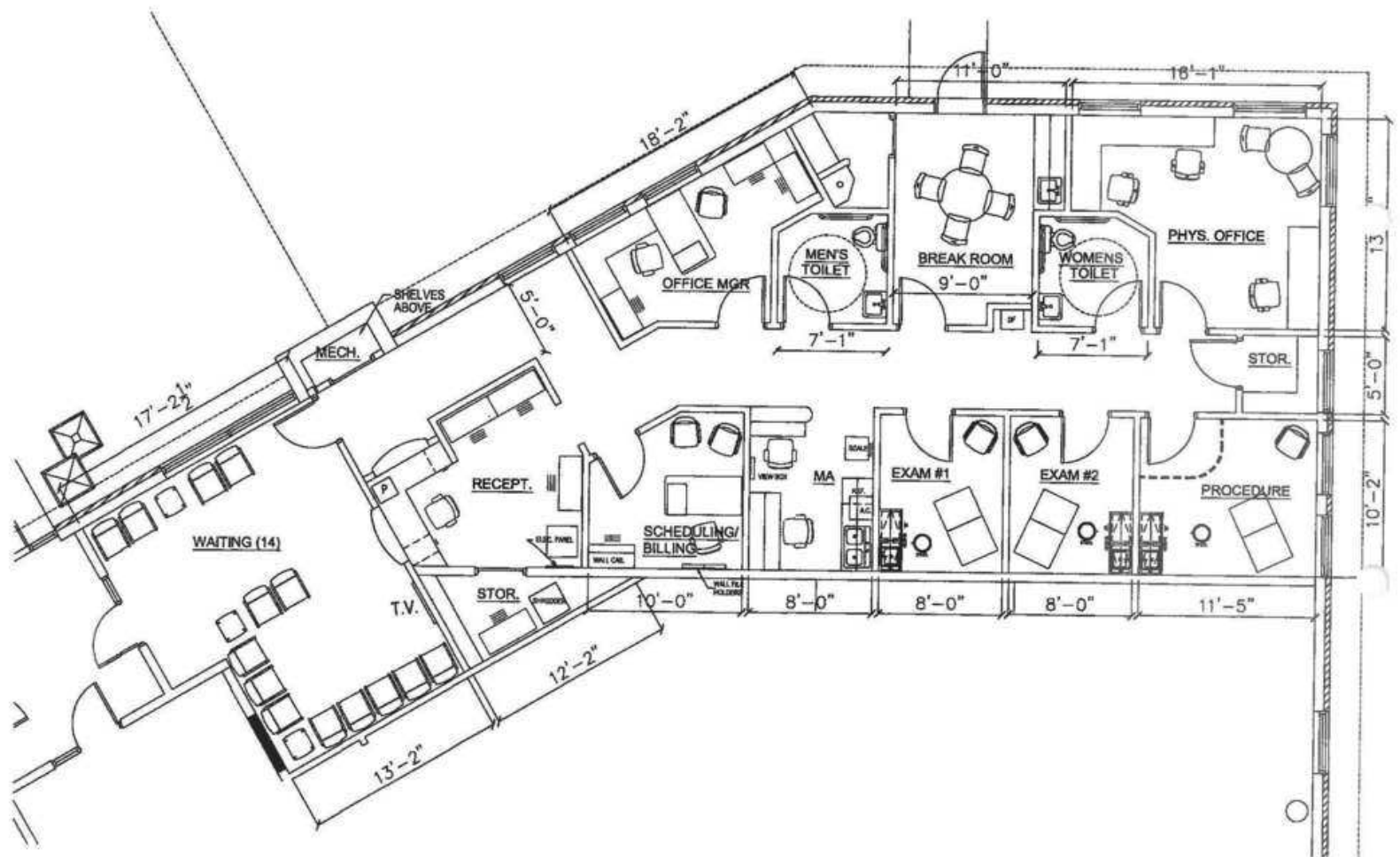
O: 517 487 9222 | C: 517 899 6368
jbranch@naimidmichigan.com

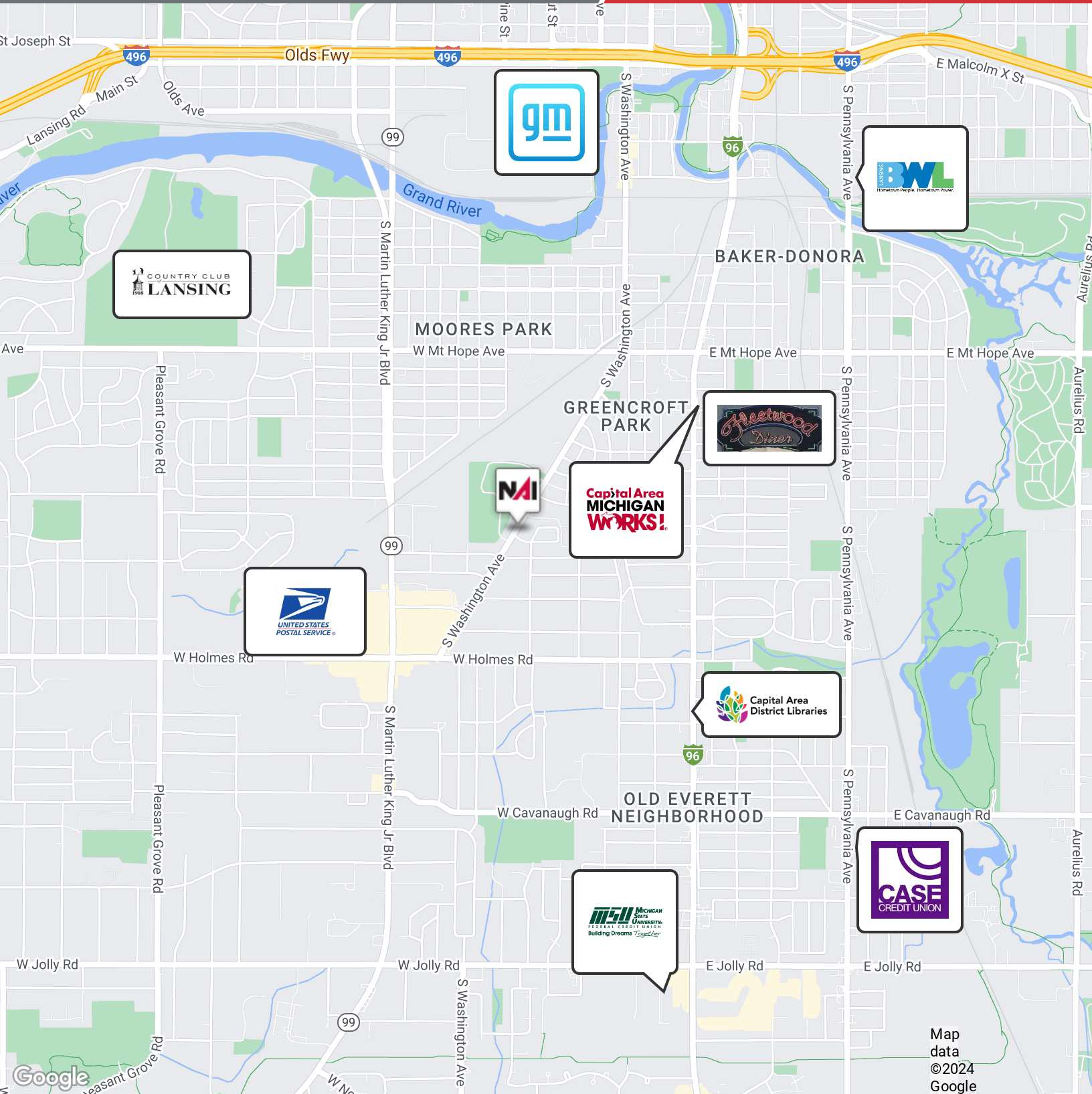


Jim Vlahakis

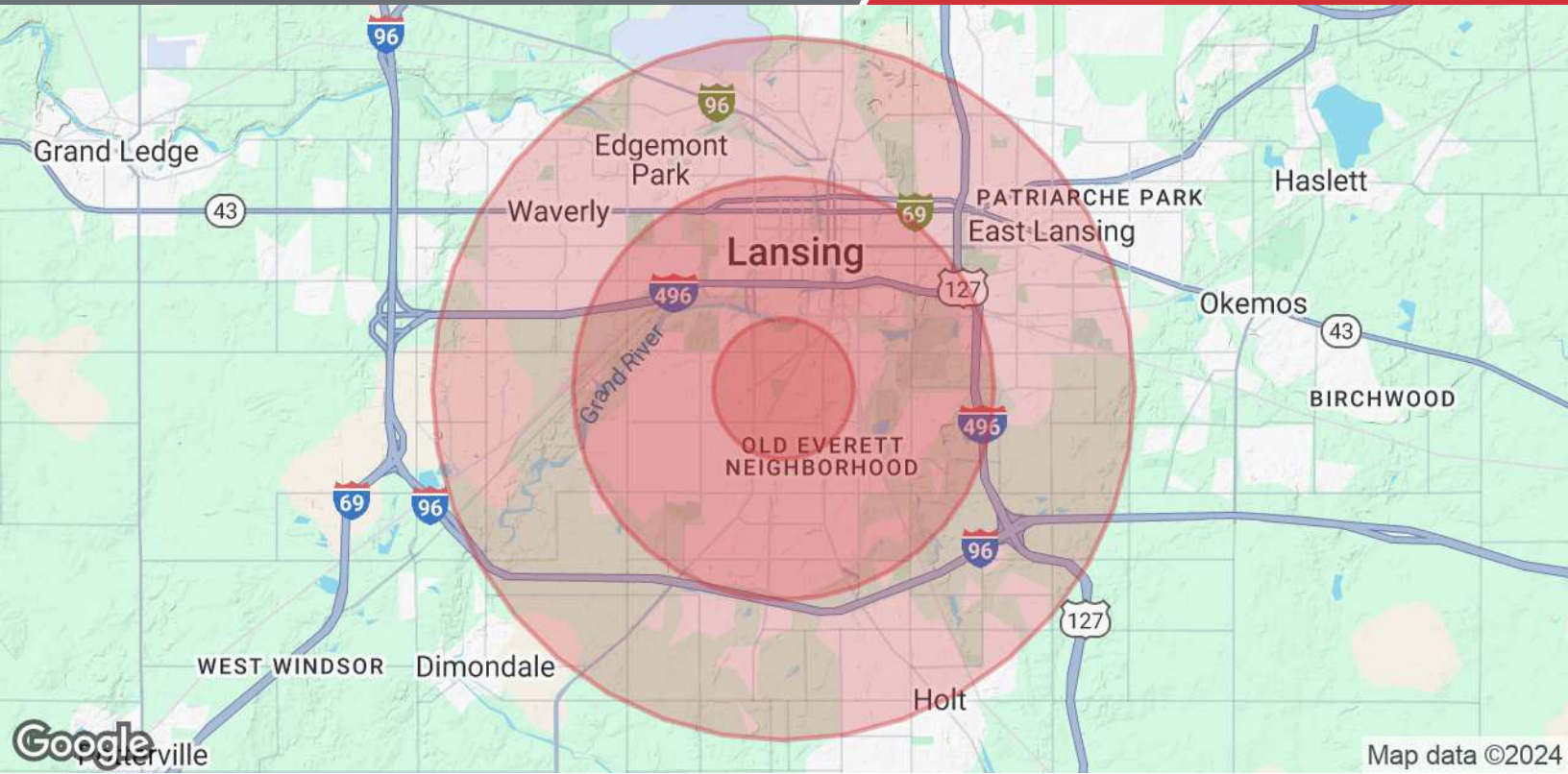
O: 517 487 9222 | C: 517 881 9916
jvlahakis@naimidmichigan.com







Map data ©2024 Google



Population	1 Mile	3 Miles	5 Miles
Total Population	13,704	98,065	203,387
Average Age	35.1	33.0	32.7
Average Age (Male)	31.5	30.5	30.9
Average Age (Female)	38.7	35.4	34.6
Households & Income	1 Mile	3 Miles	5 Miles
Total Households	5,829	41,512	83,539
# of Persons per HH	2.4	2.4	2.4
Average HH Income	\$50,034	\$45,511	\$49,666
Average House Value	\$101,489	\$108,451	\$124,502

2020 American Community Survey (ACS)