



HINMAN
DEVELOPMENT ♦ MANAGEMENT ♦ LEASING

FLEX SPACE FOR LEASE

2700 NORTHERN

2700 NORTHERN DRIVE SE | GRAND RAPIDS, MI 49546



2700 NORTHERN

FLEX SPACE FOR LEASE

2700 NORTHERN

2700 NORTHERN DRIVE SE | GRAND RAPIDS, MI 49546

2700 NORTHERN IS A SINGLE-STORY, 5,689 SF FLEX-USE BUILDING LOCATED ADJACENT TO CASCADE OFFICE PARK. THIS BUILDING OFFERS A FLEXIBLE FLOORPLATE AND LARGE OUTDOOR, FENCED IN STORAGE AREAS. 2700 NORTHERN DRIVES CENTRAL LOCATION OFFERS EASY ACCESS TO I-96, M-6 & THE 28TH STREET RETAIL CORRIDOR.



LIGHT INDUSTRIAL,
WAREHOUSE &
OFFICE USES
ALLOWED



MULTIPLE RETAIL &
DINING OPTIONS
NEARBY



CONVENIENT &
FREE EMPLOYEE /
VISITOR PARKING



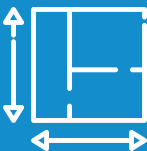
REGIONAL
LOCATION WITH
EASY ACCESS TO
I-96 & M-6



PYLON & BUILDING
SIGNAGE
OPPORTUNITIES
AVAILABLE



7 MINUTE DRIVE TO
GERALD R. FORD
INTERNATIONAL
AIRPORT



FLEXIBILITY TO
MODIFY SPACE TO
ACCOMMODATE
SPECIFIC NEEDS



HOPE NETWORK
BUS STOP
LOCATED ACROSS
28TH STREET



LARGE DAYTIME,
PROFESSIONAL
EMPLOYEE
PRESENCE IN AREA

LEASING //

HINMANCOMPANY.COM



KIRK DRISENGA
REGIONAL DIRECTOR OF LEASING
616.301.2731
KIRKD@HINMANCOMPANY.COM



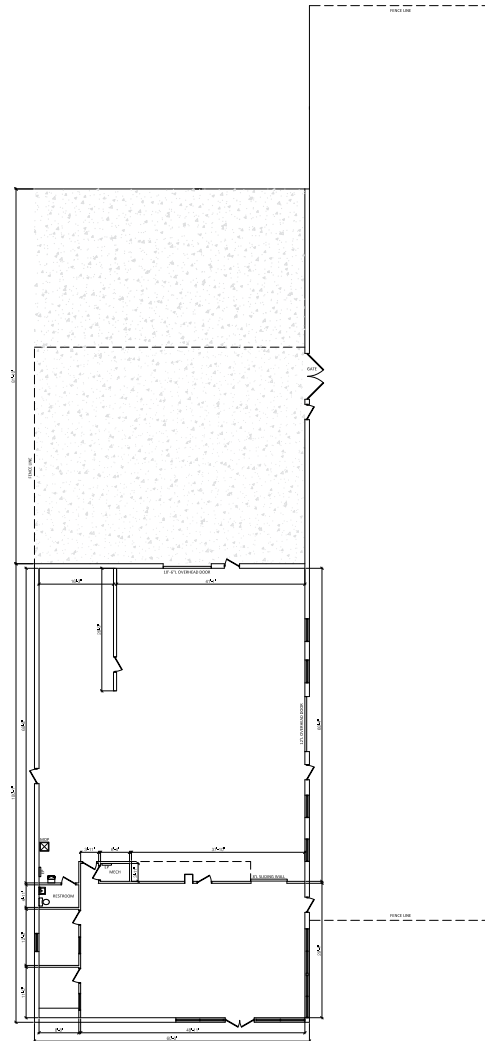
QUIN ROSSER
REGIONAL LEASING MANAGER
269.488.3664
QUIN@HINMANCOMPANY.COM

FLEX SPACE FOR LEASE

2700 NORTHERN

2700 NORTHERN DRIVE SE | GRAND RAPIDS, MI 49546

MAIN BUILDING | 5,689 SF



LEASING //

[HINMANCOMPANY.COM](https://hinmancompany.com)



KIRK DRIESENKA
REGIONAL DIRECTOR OF LEASING
616.301.2731
KIRKD@HINMANCOMPANY.COM

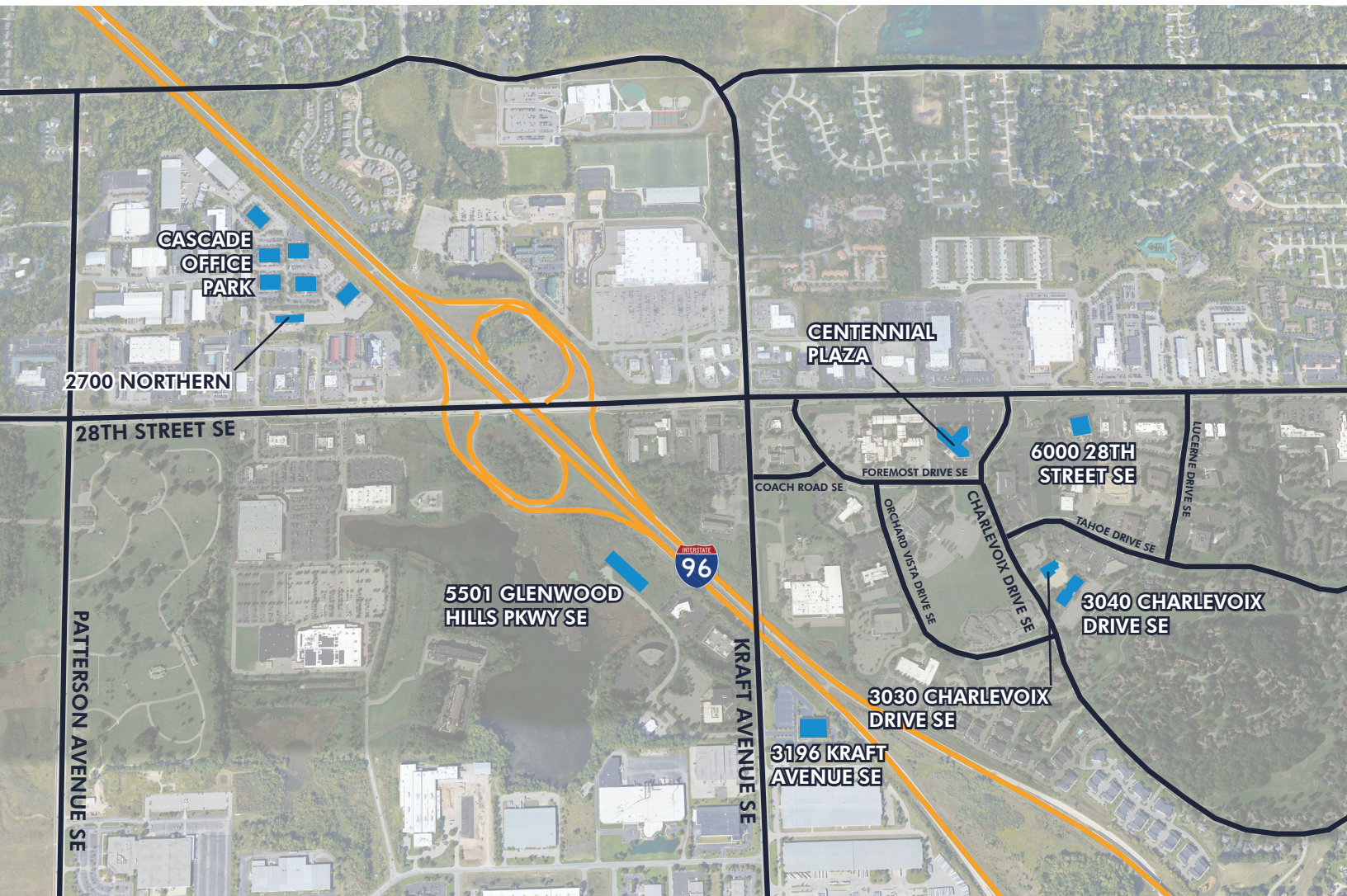


QUIN ROSSER
REGIONAL LEASING MANAGER
269.488.3664
QUIN@HINMANCOMPANY.COM

LOCATION

2700 NORTHERN

2700 NORTHERN DRIVE SE | GRAND RAPIDS, MI 49546



LEASING //

HINMANCOMPANY.COM



KIRK DRIESENKA
REGIONAL DIRECTOR OF LEASING
616.301.2731
KIRKD@HINMANCOMPANY.COM



QUIN ROSSER
REGIONAL LEASING MANAGER
269.488.3664
QUIN@HINMANCOMPANY.COM

LOCATION

2700 NORTHERN

2700 NORTHERN DRIVE SE | GRAND RAPIDS, MI 49546



LEASING //

HINMANCOMPANY.COM



KIRK DRIESENKA
REGIONAL DIRECTOR OF LEASING
616.301.2731
KIRKD@HINMANCOMPANY.COM



QUIN ROSSER
REGIONAL LEASING MANAGER
269.488.3664
QUIN@HINMANCOMPANY.COM

GRAND RAPIDS MARKET OVERVIEW

2700 NORTHERN

2700 NORTHERN DRIVE SE | GRAND RAPIDS, MI 49546

GRAND RAPIDS IS HOME TO ONE OF THE FASTEST GROWING ECONOMIES IN THE UNITED STATES.



REGIONAL
POPULATION OF
1,650,746



MORE THAN 130
INTERNATIONAL
COMPANIES



\$100 BILLION
GROSS REGIONAL
PRODUCT



20 COLLEGES AND
UNIVERSITIES



UNEMPLOYMENT
RATE OF 3.2%



COST OF LIVING
IS 5.3% LOWER
THAN NATIONAL
AVERAGE



HIGHWAY SYSTEM
OFFERS MULTI-
REGIONAL
ACCESSIBILITY



AVERAGE 19
MINUTE TRAVEL
TIME FOR MOST
COMMUTERS



100+ DAILY
FLIGHTS TO 30
MAJOR MARKETS
VIA GRR AIRPORT

RECOGNITIONS

- GRAND RAPIDS IS "ONE OF THE BEST PLACES TO LIVE IN AMERICA" BY **U.S. NEWS & WORLD REPORT**
- THE GRAND RAPIDS - KENTWOOD MSA #1 BEST MANUFACTURING HUBS BY **BUSINESS FACILITIES**
- GRAND RAPIDS IS "ONE OF THE CITIES WITH THE HOTTEST JOB MARKETS" BY **WALL STREET JOURNAL**
- GRAND RAPIDS IS THE NUMBER ONE BEST PLACES TO RAISE A FAMILY IN THE U.S. BY **ROCKET HOMES**
- GRAND RAPIDS IS "ONE OF THE BEST US CITIES FOR NEW COLLEGE GRADS" BY **CHECKR**

LEASING //

HINMANCOMPANY.COM



KIRK DRISENGA
REGIONAL DIRECTOR OF LEASING
616.301.2731
KIRKD@HINMANCOMPANY.COM



QUIN ROSSER
REGIONAL LEASING MANAGER
269.488.3664
QUIN@HINMANCOMPANY.COM