

Towne Centre

OFFICE PARK

10810-10830 EAST 45TH STREET | TULSA, OK



CBRE

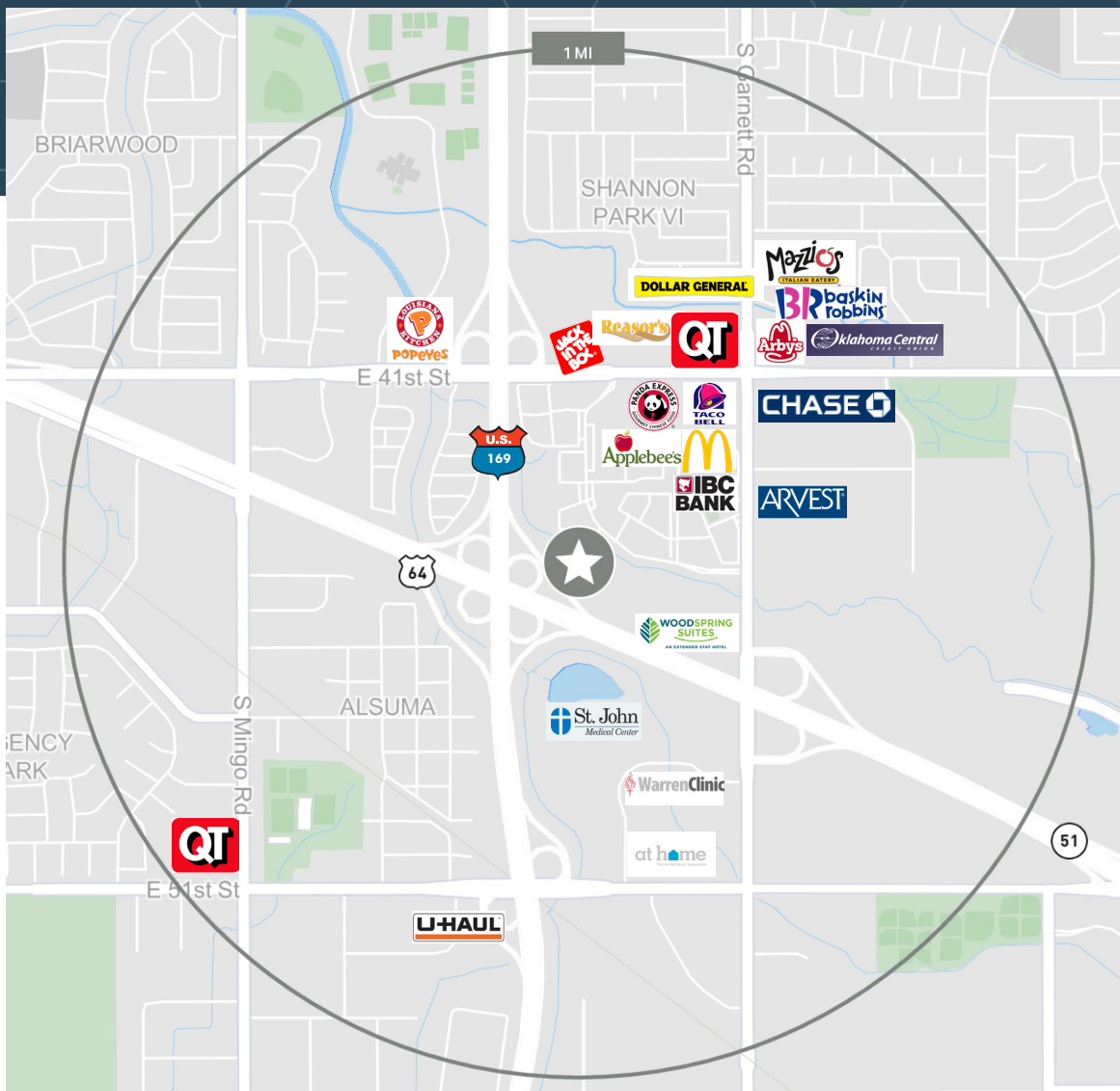
Prime Tulsa Location

- Towne Centre Office Park is a Class 'B' three building office complex offering a vast area of 180,845 square feet available for lease. Strategically located near Highway 169 and the Broken Arrow Expressway, it ensures easy accessibility. The Office Park is a 15-minute drive from Tulsa International Airport and the Central Business District. The advantageous location is surrounded by a variety of dining and retail options, offering convenience for businesses and employees alike.





The building features a 24-hour limited key card access system and lobby access surveillance system.





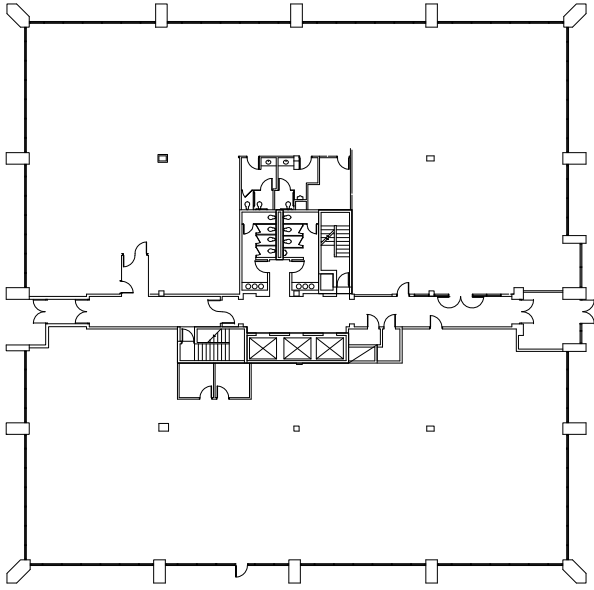
TOWNE CENTRE

A

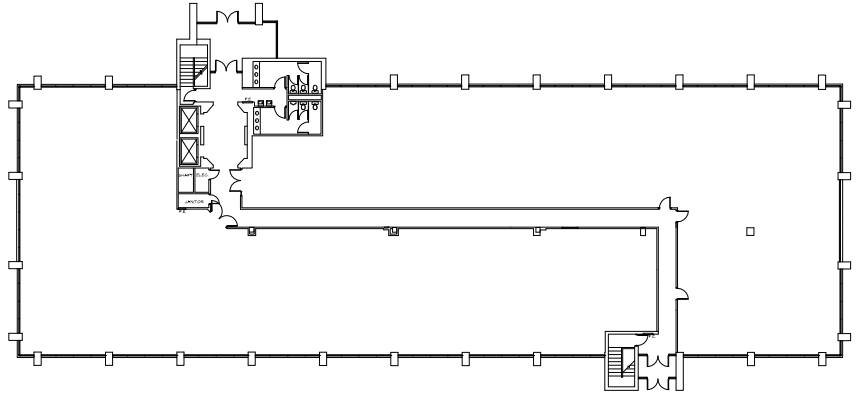
B

C

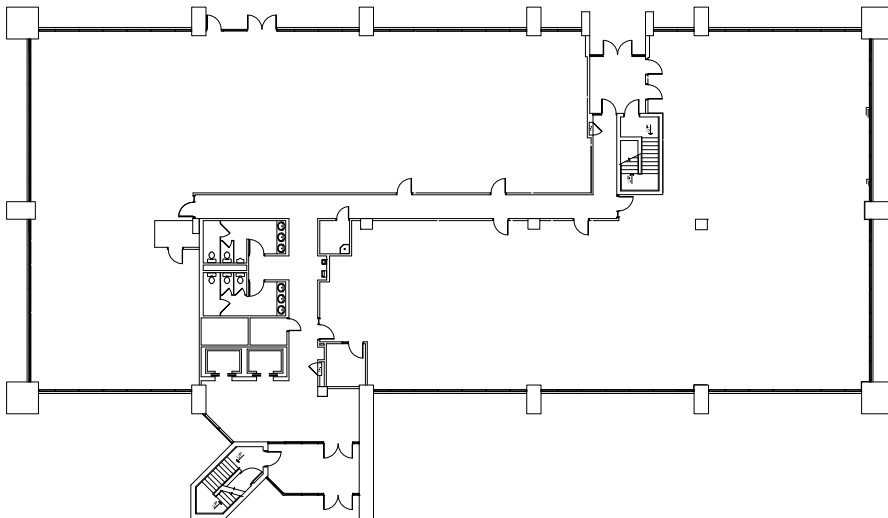
FLOOR PLATE OUTLINES



TOWNE CENTER A



TOWNE CENTER B



TOWNE CENTER C





TOWNE CENTRE

CARRIE CLAIBORNE

Senior Associate

T +1 918 906 0224


carrie.claiborne@cbre.com

LESLIE KIRKPATRICK CORNELL, MBA

Senior Associate

T +1 918 557 2231

leslie.kirkpatrick@cbre.com



© 2025 CBRE, Inc. All rights reserved. This information has been obtained from sources believed reliable, but has not been verified for accuracy or completeness. You should conduct a careful, independent investigation of the property and verify all information. Any reliance on this information is solely at your own risk.

CBRE and the CBRE logo are service marks of CBRE, Inc. All other marks displayed on this document are the property of their respective owners. Photos herein are the property of their respective owners. Use of these images without the express written consent of the owner is prohibited.



CBRE