

RETAIL SPACE AVAILABLE

Pataskala Landings

PATASKALA | OH



MELISSA RUTHER

Senior Vice President

513 477 1858

melissa.ruther@cbre.com

CBRE



PROPERTY OVERVIEW

PATASKALA LANDINGS

- × New Development in Pataskala, a growing suburb of Columbus, located 19 miles east of the City.
- × The planned development is at the intersection of East Broad Street and John Reese Parkway, soon to be a signalized intersection.
- × Pataskala is primarily served by SR 16 (East Broad Street) an east/west artery connecting Pataskala to the City of Columbus and the I-270 Outerbelt with traffic counts in front of the site estimated at 21,090 VPD.
- × The trade area is expected to continue to grow largely driven by the significant employment provided in Licking County by logistics companies like Amazon, Illuminate, and the planned \$20 billion Intel factory.

Employers Logistics

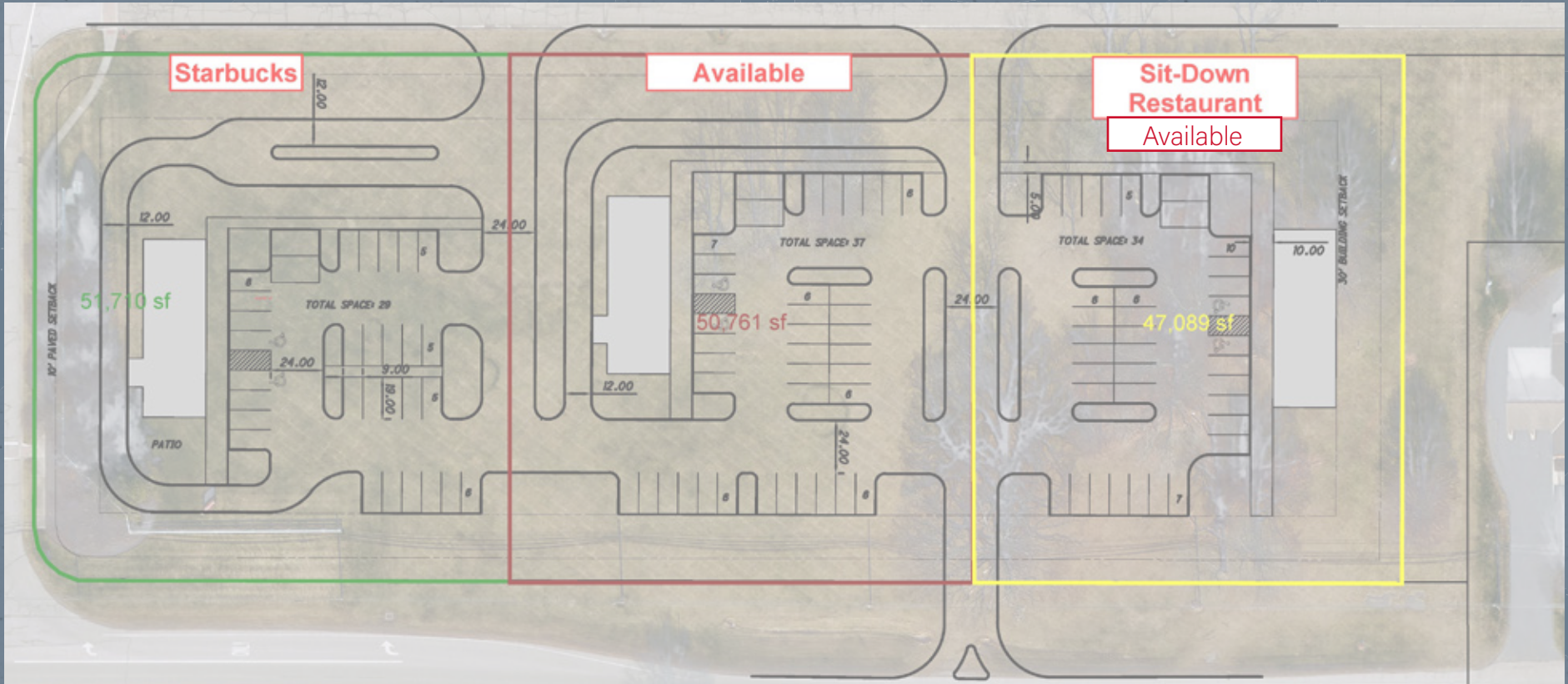
- × Amazon – 850,000 SF distribution center
- × Kohl's – 1.2 million SF distribution center
- × Illuminate USA – 1.1 million SF distribution center
- × Petco – Part of a larger 1.2 million SF distribution center development

Other significant employers

- × Walmart
- × Kroger
- × Target

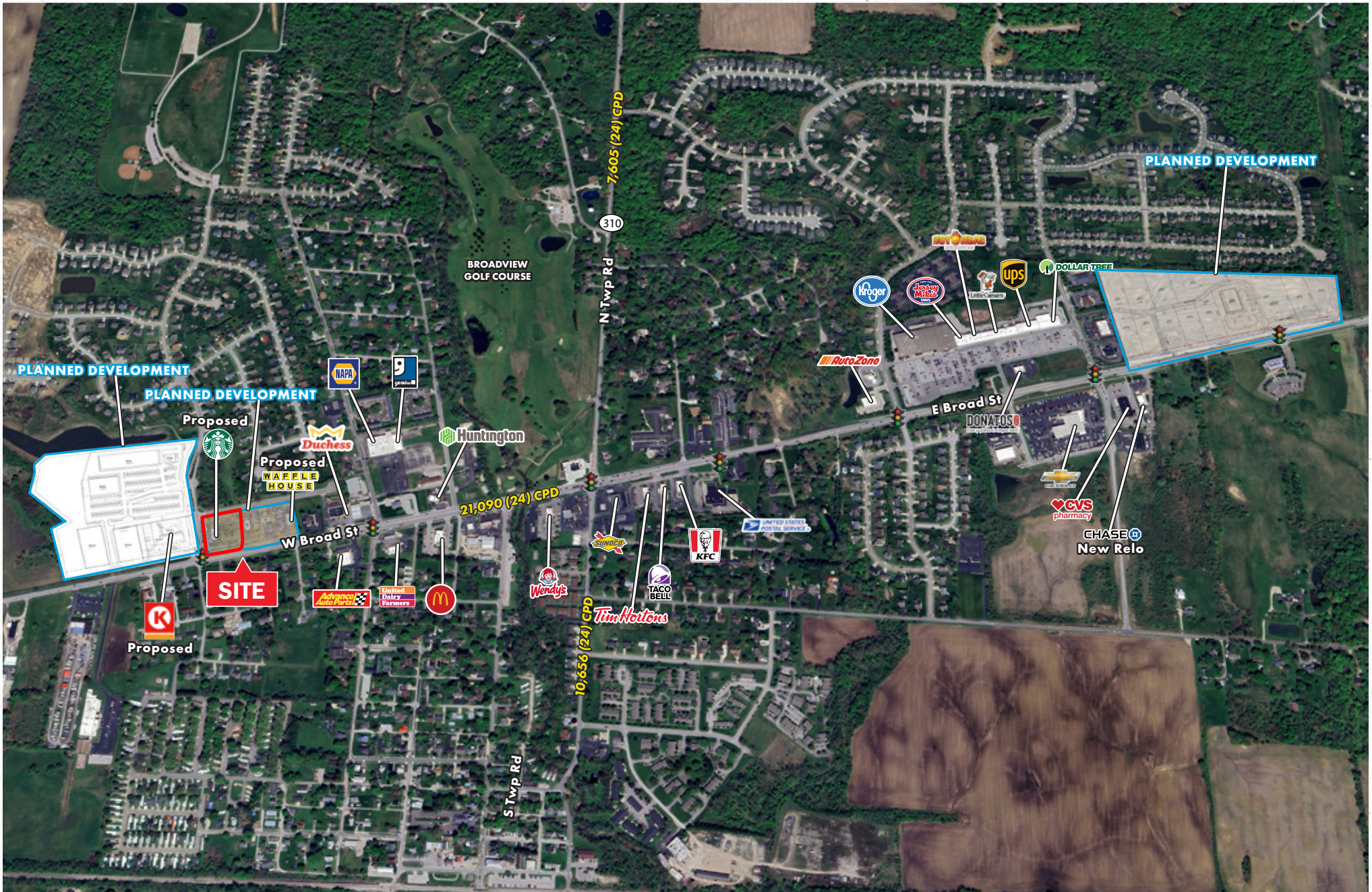
SITE PLAN

PATASKALA LANDINGS









MID-LEVEL AERIAL

PATASKALA LANDINGS



DEMOGRAPHICS

PATASKALA LANDINGS

		1 MILE	3 MILES	5 MILES
	POPULATION	5,507	18,790	42,955
	COLLEGE EDUCATED	19.6%	20.2%	19.0%
	MED HH INCOME	\$80,079	\$90,461	\$98,344
	BUSINESSES	184	400	875
	DAYTIME POPULATION	4,959	15,256	34,369
	MED AGE	39.2	40.0	39.2

RETAIL SPACE AVAILABLE

Pataskala Landings

PATASKALA | OH

SITE

Proposed

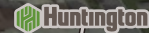
W Broad St



21,090 (24) CPD



DOLLAR GENERAL



MELISSA RUTHER

Senior Vice President

513 477 1858

melissa.ruther@cbre.com

CBRE