

236 W. ORANGE SHOW ROAD

SUITE 108, SAN BERNARDINO, CA

Lease Rate
\$1,469/Month



±2,260 FLEX SPACE FOR LEASE

FEATURES

- ±2,260 SF Flex Space - Condo
- ±1,444 SF Office Area
- ±816 SF Warehouse Area
- Fire-Sprinkler Safety System
- 1 Grade Level Rollup Door
- IL- Industrial Light Zoning
- Expanded Office w/ HVAC, & Shower
- 18' Ceiling Height (warehouse)
- 200 Amp, 120/208 Volt Electrical Service
- Excellent I-10, 215 & 210 Freeway Access

**Leasing Brokers are the Owners/Landlords*



For More Information, please contact:

SPENCER HULL

Senior Vice President
spencerh@cbcsocalgroup.com
CalBRE License # 01507542

RICK LAZAR

Senior Vice President
rickl@cbcsocalgroup.com
CalBRE License # 00549349



1901 Orange Tree Lane
Suite 250

Redlands, CA 92374

(909) 793-3600

www.cbcsocalgroup.com

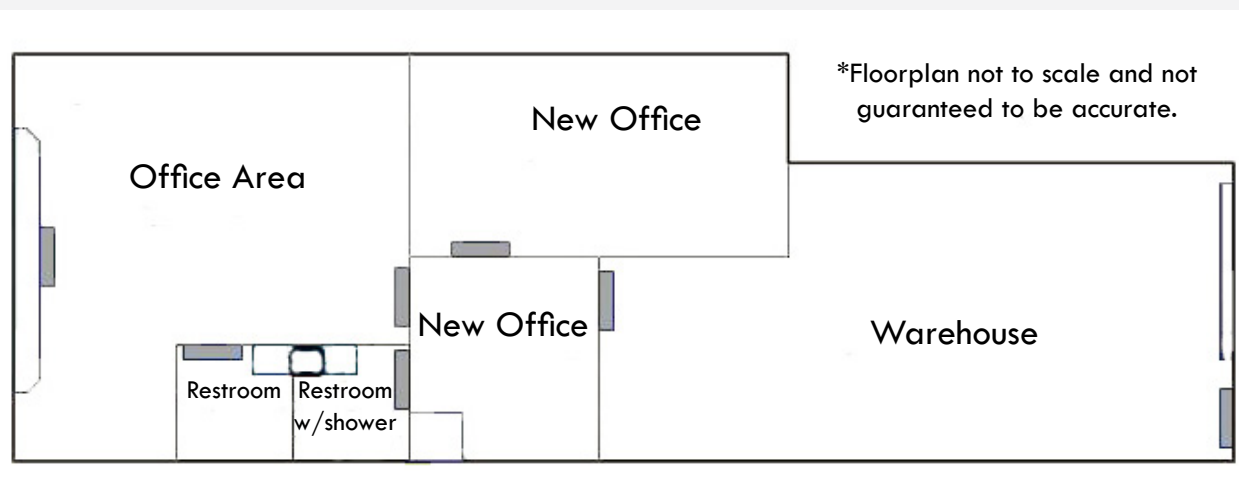
Coldwell Banker Commercial and the Coldwell Banker Commercial Logo are registered service marks licensed to Coldwell Banker Commercial Affiliates. Each Office is Independently Owned and Operated. All information contained herein has been obtained from sources deemed reliable. However, no warranty or guarantee is made as to the accuracy of the information.

CalBRE License # 01909862

236 W. ORANGE SHOW ROAD

SUITE 108, SAN BERNARDINO, CA

SUITE INFORMATION



For More Information, please contact:

SPENCER HULL

Senior Vice President
spencerh@cbcsocalgroup.com
CalBRE License # 01507542

RICK LAZAR

Senior Vice President
rickl@cbcsocalgroup.com
CalBRE License # 00549349



1901 Orange Tree Lane
Suite 250

Redlands, CA 92374

(909) 793-3600

www.cbcsocalgroup.com

Coldwell Banker Commercial and the Coldwell Banker Commercial Logo are registered service marks licensed to Coldwell Banker Commercial Affiliates. Each Office is Independently Owned and Operated. All information contained herein has been obtained from sources deemed reliable. However, no warranty or guarantee is made as to the accuracy of the information.

CalBRE License # 01909862