

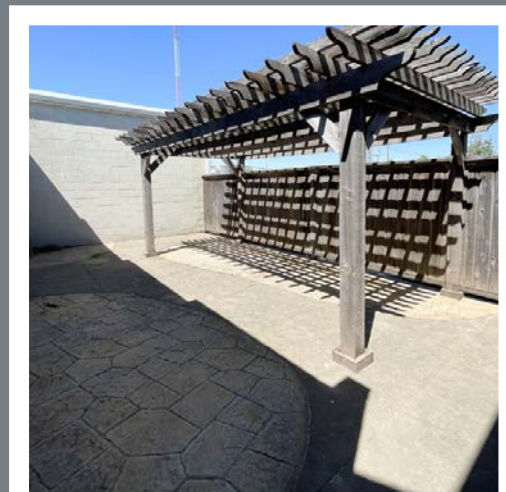
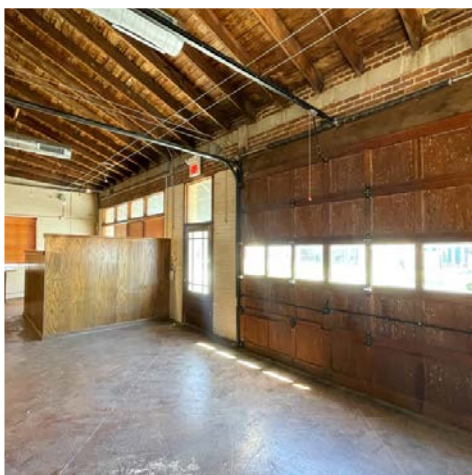
# 405 E COMANCHE

405 E Comanche  
Norman, OK 73071

Such a unique property! This standalone building is within a couple blocks of the Cleveland County Courthouse and would be great for offices or retail space. The property has a number of updates while maintaining many of the charming aspects of the 1920's old town Norman look.

## PROPERTY DETAILS

- ✓ Rent \$20/SF + utilities
- ✓ Working bay door
- ✓ 2,314 square feet
- ✓ Open ceiling concept
- ✓ Small enclosed outdoor area
- ✓ Retail or Office



# Details & Demographics

## Current Availability

- 405 E Comanche: 2,314 SF

### Traffic Count 2022

Porter & Comanche St 18,314

### Total Population

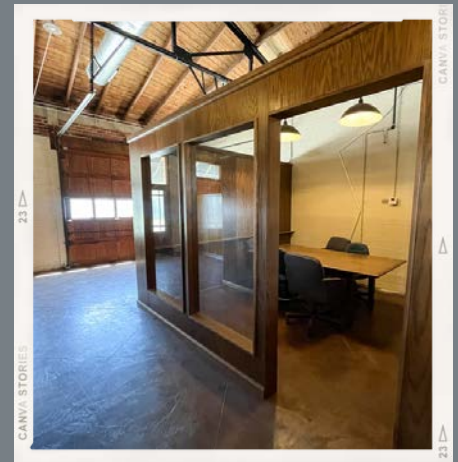
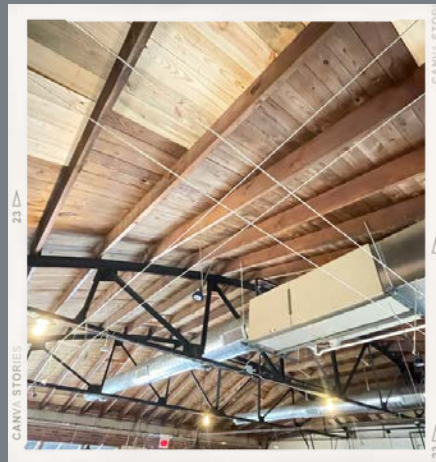
2 mile radius 48,460

5 mile radius 117,118

### Average Household Income

2 mile radius \$58,909

5 mile radius \$75,980



## Contact Information

### **Lisa Talley**

Owner / Broker, GRI  
Lisa@ARIAGroupok.com  
(405) 613-3793

License #147360

(405) 701-8881  
[www.ARIAGROUPOK.com](http://www.ARIAGROUPOK.com)

### **Chrystal Raprich**

Commercial Leasing Agent  
Chrystal@ARIAGroupok.com  
(405) 590-5863

License #202367

# Close to restaurants & businesses in downtown Norman

