



38780 - 38790 Paseo Padre Pkwy

FREMONT, CA 94536

BUILDING SIZE (SF)

2,968 SF

LEASE RATE

\$3.00 NNN

LOT SIZE

3,444 SF

PROPERTY SUBTYPE

Medical Office/ Retail Building

PROPERTY HIGHLIGHTS

- Stand Alone
- Medical Dental Orthodontics Building
- Curb Appeal
- Fully Plumbed
- Corner Location
- Former Tenant Western Dental Orthodontics
- Walking distance to BART

For more information, please contact:

NEWMARK

Gabe Regalado

Director

CA RE #02008286

t 408-455-4913

Gabe.Regalado@nrmk.com

SVN

Mary Blaser

Vice President

CA RE #01053916

t 408-309-4049

Mary.Blaser@svn.com

3055 Olin Ave Suite 2200
San Jose, CA 95128

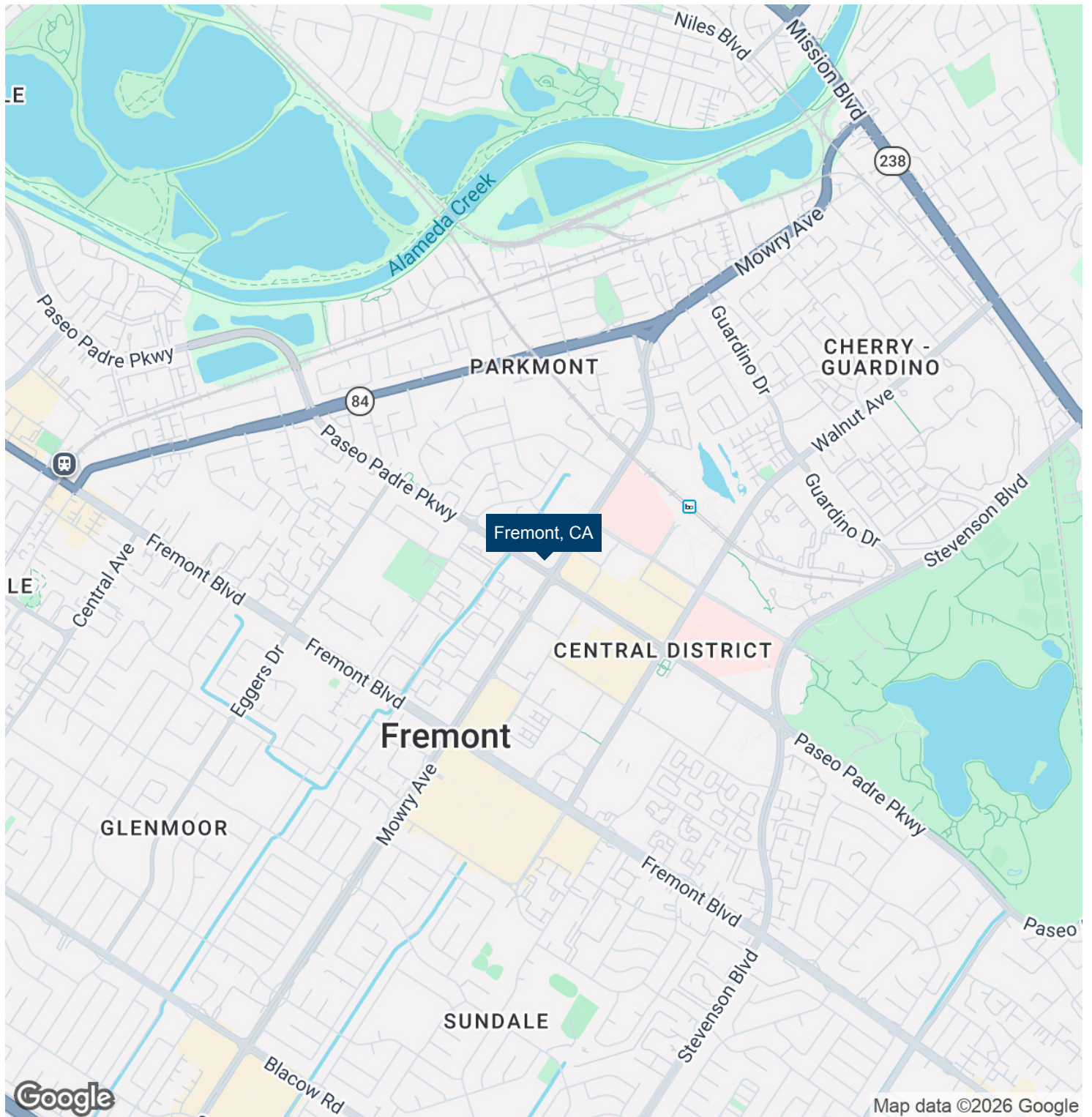


nrmk.com

NEWMARK

Corporate License #0832933

The information contained herein has been obtained from sources deemed reliable but has not been verified and no guarantee, warranty or representation, either express or implied, is made with respect to such information. Terms of sale or lease and availability are subject to change or withdrawal without notice.



NEWMARK

Gabe Regalado

Director

CA RE #02008286

t 408-455-4913

Gabe.Regalado@nrmk.com

SVN

Mary Blaser

Vice President

CA RE #01053916

t 408-309-4049

Mary.Blaser@svn.com

38780 PASEO PADRE PKWY / FREMONT, CA 94536



NEWMARK

Gabe Regalado

Director

CA RE #02008286

t 408-455-4913

Gabe.Regalado@nrmk.com

SVN

Mary Blaser

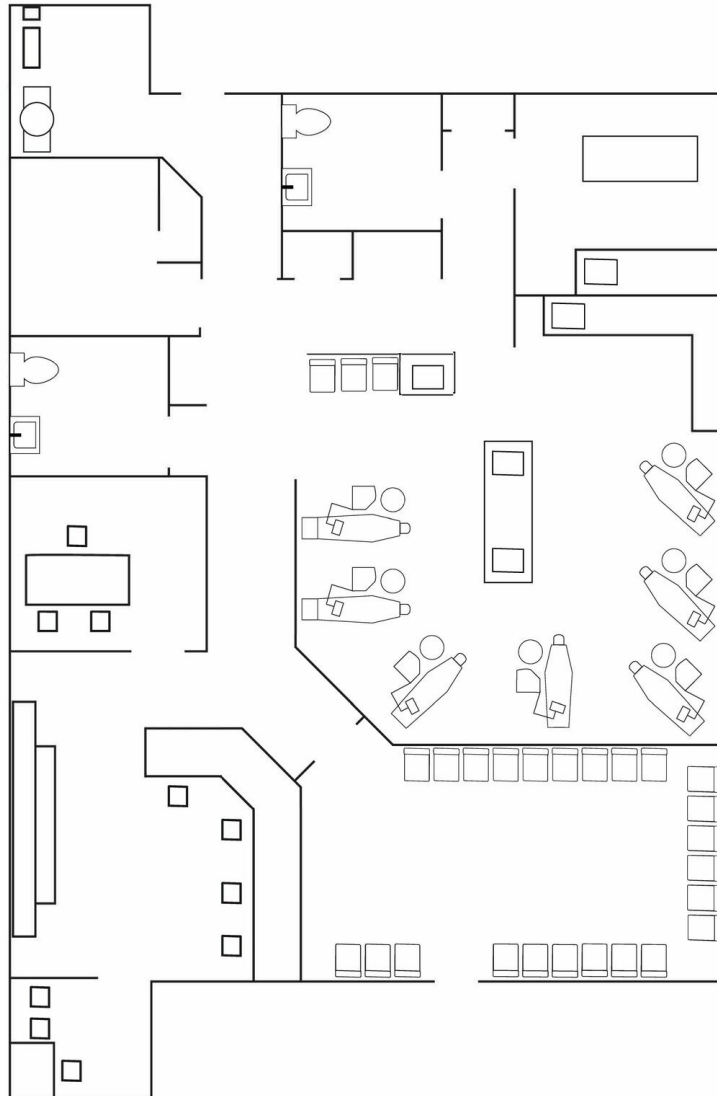
Vice President

CA RE #01053916

t 408-309-4049

Mary.Blaser@svn.com

NEWMARK



Floor Plan

NEWMARK

Gabe Regalado

Director

CA RE #02008286

t 408-455-4913

Gabe.Regalado@nrmk.com

SVN

Mary Blaser

Vice President

CA RE #01053916

t 408-309-4049

Mary.Blaser@svn.com