

Yonkers, NY

RETAIL SPACE FOR LEASE

850 Bronx River Road

Fleetwood Plaza



AVAILABLE:

1,300-1,790 SF ± Future Availability

CO-TENANTS:

CVS, Dunkin', UPS Store, Optimum Store, Subway, Rita's Italian Ice, Geller Family Dental Group, Sylvan Learning Center, Fleetwood Laundry and more

NEIGHBORING RETAILERS:

Starbucks, AT&T, Chase Bank and many more

ADDITIONAL INFORMATION:

- Extremely Busy Neighborhood Shopping Center on the Corner of Bronx River Road and Midland Avenue
- Walking Distance to the Fleetwood & MTA Train Station
- Accessible to NYS Thruway, Bronx River and Cross County Parkway
- Large Pylon Sign

RENT:

Call for Details

CAM/TAXES:

Call for Details

AREA DEMOGRAPHICS

	1 Mile	3 Miles	5 Miles
Population	40,595	352,332	843,990
Avg. HH Income	\$153,130	\$139,937	\$135,807

For More Information,
Please Contact:

914-237-3400

Zach Landes – Ext. 123
Zach@RoyalPropertiesInc.com

David Landes – Ext. 104
David@RoyalPropertiesInc.com



ROYAL

PROPERTIES

www.RoyalPropertiesInc.com

All information furnished herein is from sources deemed reliable. No warranty or representation is made to the accuracy thereof and it is submitted subject to errors, omissions and/or changes without notice.

Yonkers, NY

RETAIL SPACE FOR LEASE

850 Bronx River Road

Fleetwood Plaza



35 PARKING SPACES

BRONX RIVER ROAD

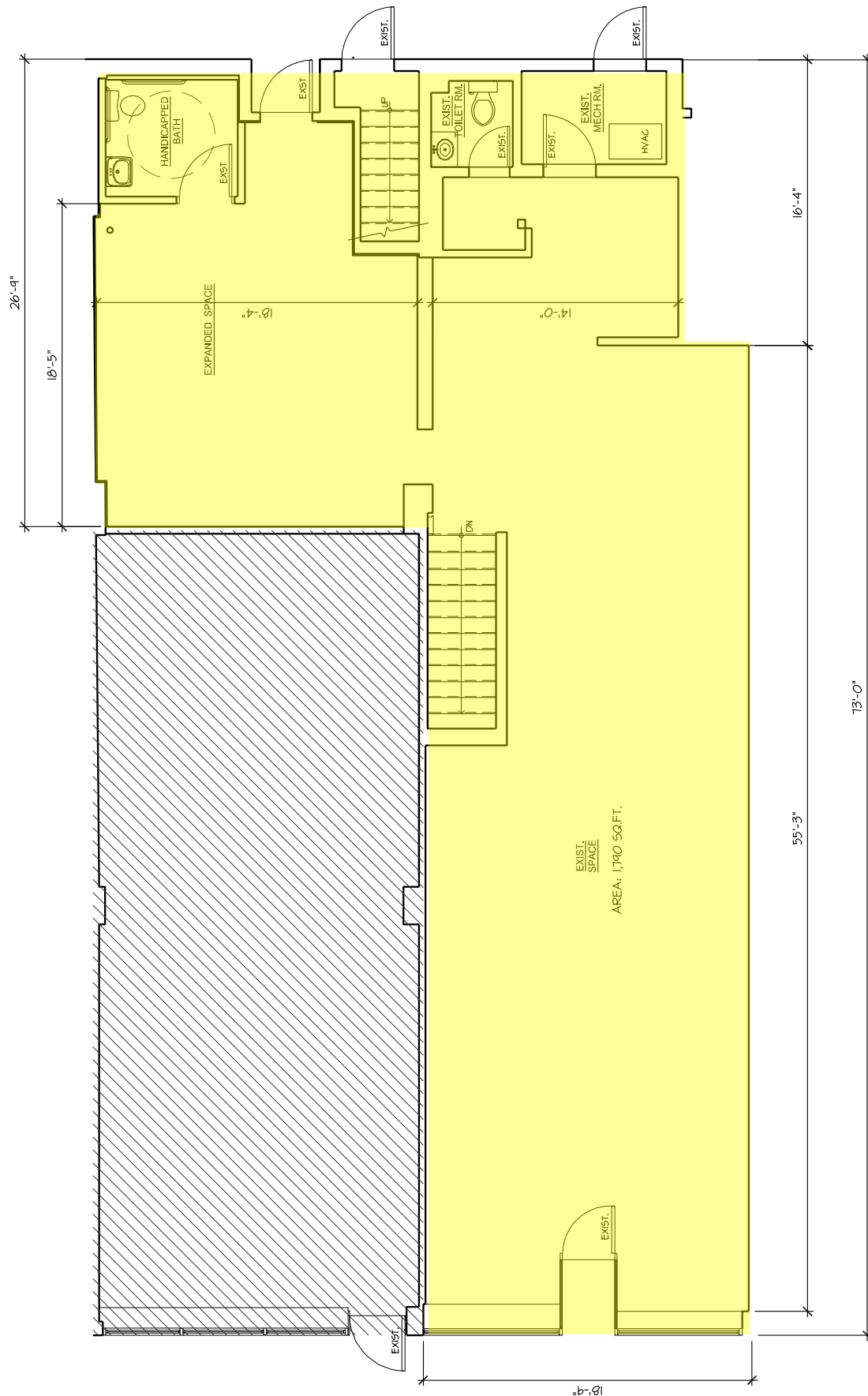


Yonkers, NY

RETAIL SPACE FOR LEASE

850 Bronx River Road

Fleetwood Plaza



Yonkers, NY

RETAIL SPACE FOR LEASE

850 Bronx River Road

Fleetwood Plaza



Yonkers, NY

RETAIL SPACE FOR LEASE

850 Bronx River Road

Fleetwood Plaza



Yonkers, NY

RETAIL SPACE FOR LEASE

850 Bronx River Road

Fleetwood Plaza

