



## Excellent Location!

- ±1.03 AC of Commercial Land
- Frontage on N Scott Ave
- High Visibility for Prospective Businesses
- Quick, Easy Access to I-49

## For more information:

Christian Wead  
816.412.8472  
cwead@blockllc.com

Blaise Gunnerson  
816.878.6314  
bgunnerson@blockllc.com

The information contained in this marketing flyer is presented as general information only. Block Real Estate Services, LLC makes no representation as to its accuracy. This information is not intended as legal, financial or real estate advice and must not be relied upon as such. You should make your own inquiries, obtain independent inspections, and seek professional advice tailored to your specific circumstances before making any legal, financial or real estate decisions.

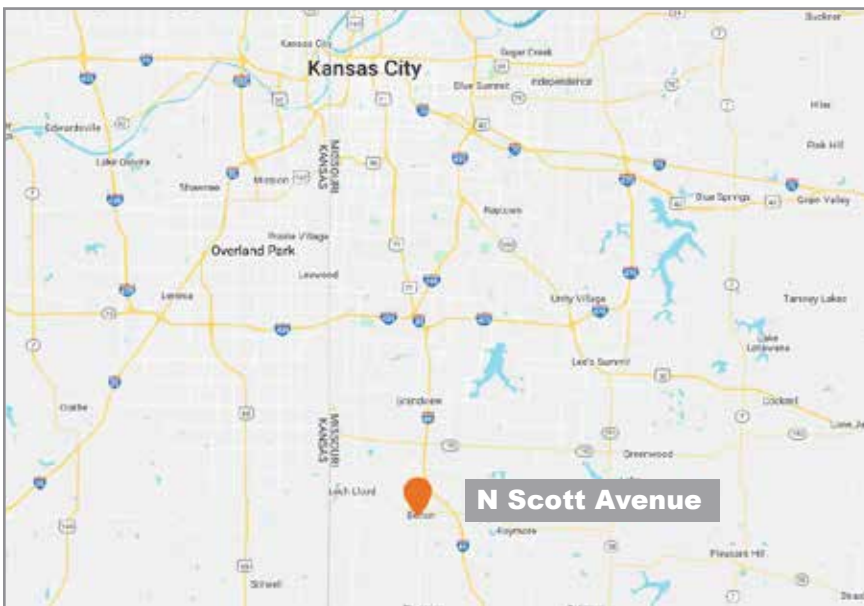
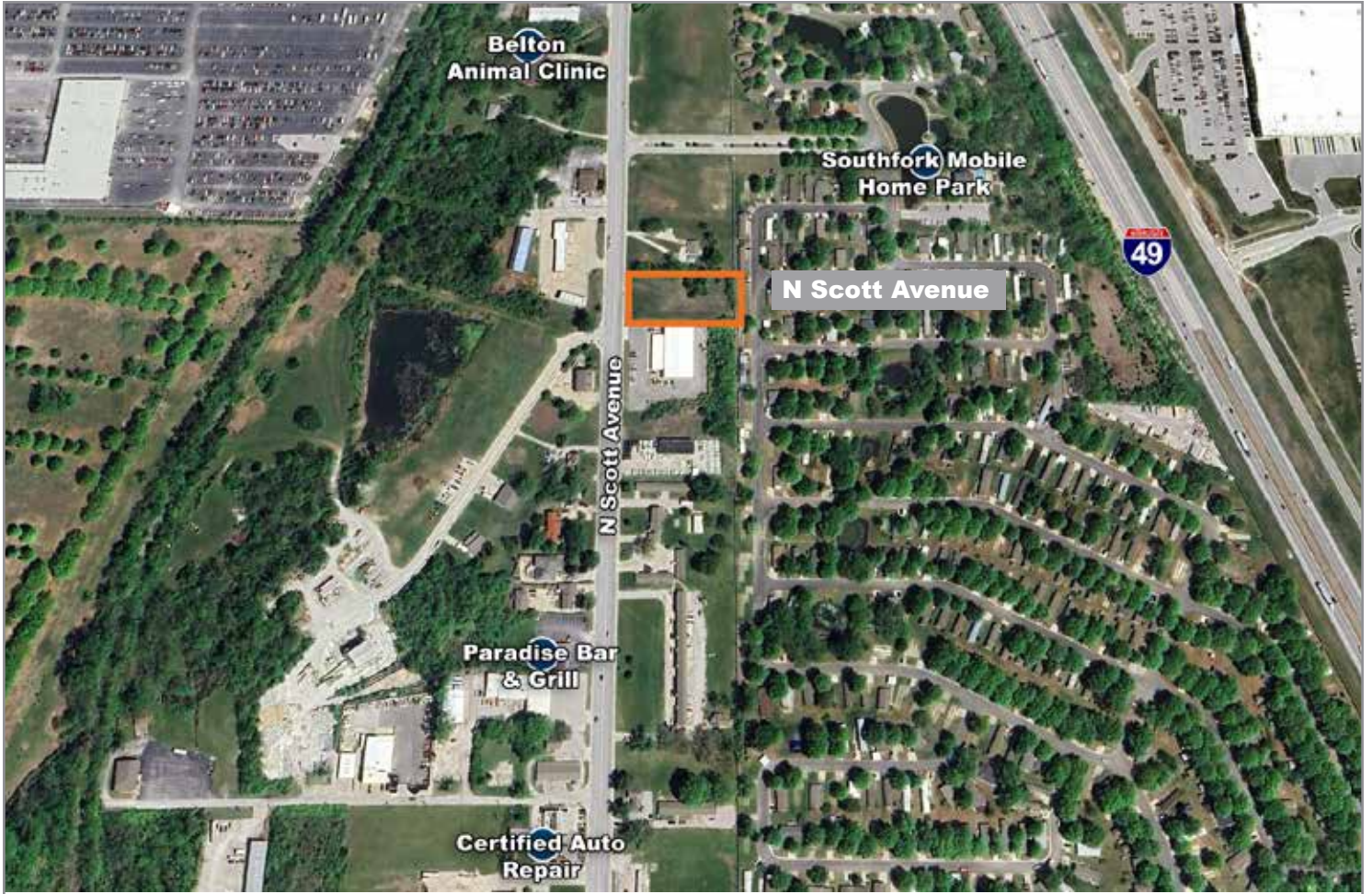
## Parcel Specifications

Lot:	±1.03
Zoning:	C-2
Topography:	Gently Sloping, Cleared
Frontage:	350' on N Scott Ave
Municipality:	Mt Pleasant
Real Estate Taxes (2024):	\$822.25
Parcel ID:	05-01-02-400-001-003.000
Legal Description:	LOCUST HILL N50' LOT 16 & ALL LOT 17

# North Scott Avenue

Belton, MO 64012

# For Sale



For more information:

Christian Wead

816.412.8472

[cwead@blockllc.com](mailto:cwead@blockllc.com)

Blaise Gunnerson

816.878.6314

[bgunnerson@blockllc.com](mailto:bgunnerson@blockllc.com)