

# CLEVELAND CLINIC RETAIL DISTRICT

9500 Euclid Ave, Cleveland, OH 44195



**FOR MORE INFO: 216.831.8100**

**Steve Passov** | [spassov@passovgroup.com](mailto:spassov@passovgroup.com)

**Hanna Trolli** | [htrolli@passovgroup.com](mailto:htrolli@passovgroup.com)



# CLEVELAND CLINIC'S RETAIL DISTRICT | PROPERTY HIGHLIGHTS & FUN FACTS

- High Foot Traffic due to the continuous flow of patients, visitors, & staff.
- Join Starbucks & Panera
- Join the Cleveland Clinic's new retail district
- Over 400,000 visitors annually

## AVAILABILITY

- 1,000sf, 1,500sf & 1,865sf spaces available now



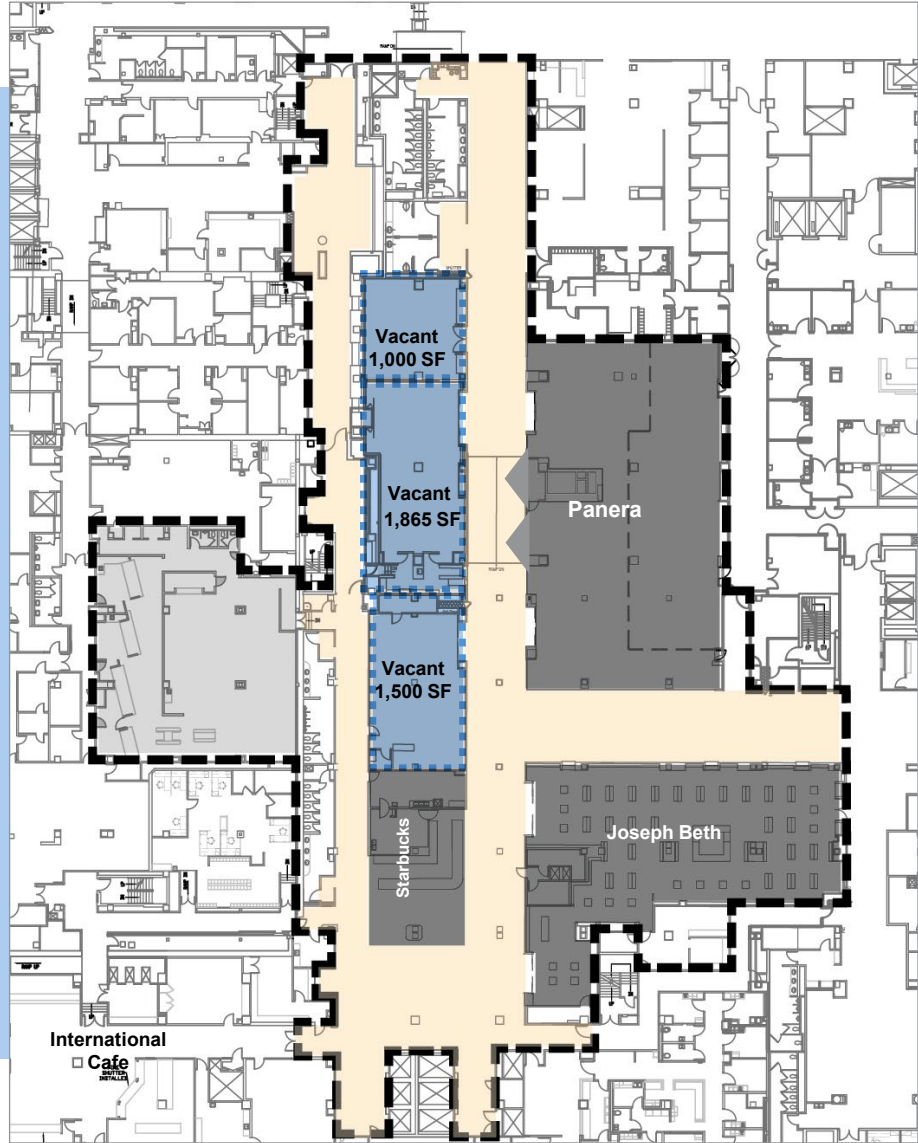
Cleveland Clinic's Ohio location services  
11.1 Million patients annually.



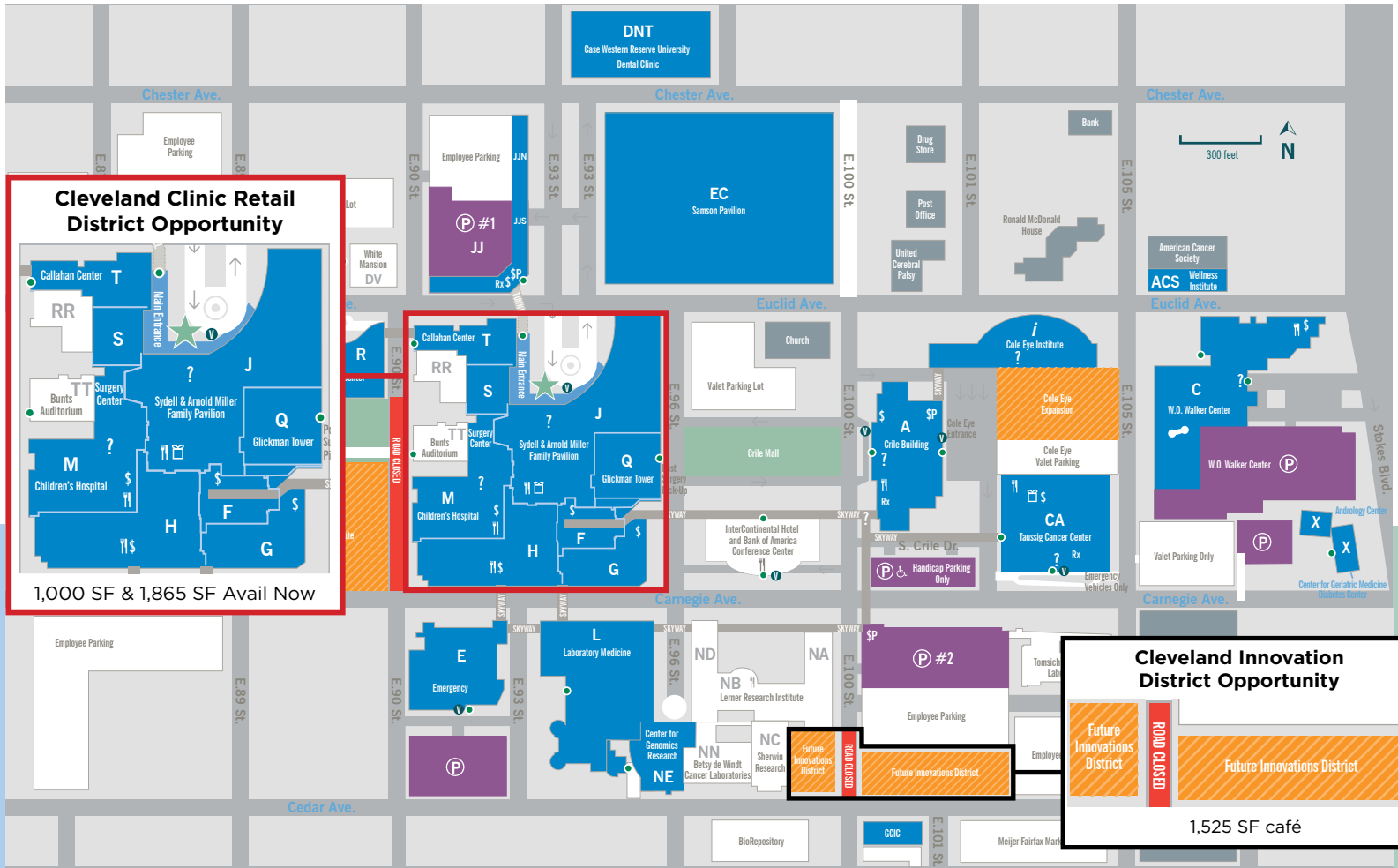
No. 2 hospital in the world and the world's  
No. 1 hospital for cardiac surgery  
and cardiology



# CLEVELAND CLINIC'S RETAIL DISTRICT | SITE PLAN & INTERIOR PHOTOS



# CLEVELAND CLINIC'S RETAIL DISTRICT | PARKING MAP



**Cleveland Clinic Retail District Opportunity**

1,000 SF & 1,865 SF Avail Now

**Cleveland Innovation District Opportunity**

Future Innovations District

**ROAD CLOSED**

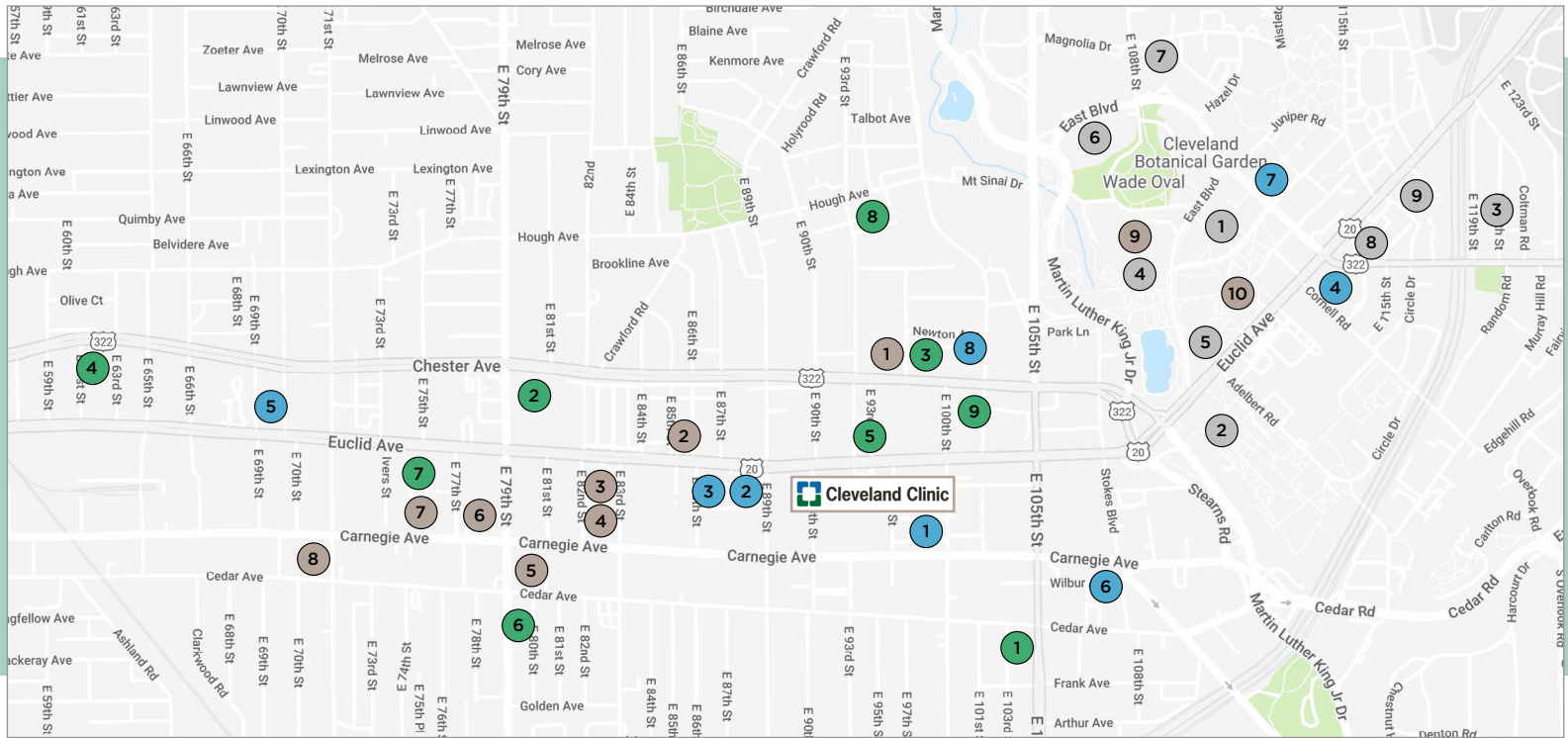
Future Innovations District

1,525 SF café

- ★ Main entrance
  - Other entrances
  - ? Information desk
  - 🍴 Dining area
  - 💰 ATM
  - Rx Pharmacy
  - ☒ Skyway
  - ⋯ Tunnel
  - ♿ Accessible parking for patients available in all parking lots
  - 🚗 Valet parking
  - 🅈 Parking payment station
  - 🛍 Gift shop
  - 🏋 Fitness Center
  - 🅇 Visitor parking  
 Parking #1 E. 93rd St. off Chester Ave.  
 Parking #2 E. 100th St. off Carnegie Ave.  
 Surface Lot Parking is available near the Mellen Center, Emergency Department, Crile Building (handicap parking only) and Andrology Center and the Center for Geriatric Medicine and Diabetes Center
- Parking Services Assistance Program: Call 216.444.2255 if you experience a mechanical or other problem while parked at Cleveland Clinic. This service is available 24 hours a day, 7 days a week, 365 days a year.
- For your convenience, a free shuttle bus service provides transportation around campus. Please call 216.444.8484 or, from any house phone, 48484 and select Option 1.



# CLEVELAND CLINIC'S RETAIL DISTRICT | NEARBY AMENITIES MAP



## HOTELS

1. InterContinental Hotel Cleveland
2. InterContinental Suites Hotel
3. Holiday Inn Cleveland Clinic
4. Courtyard by Marriott Hotel University Circle
5. Tru by Hilton Hotel Cleveland Clinic
6. The Tudor Arms Hotel Cleveland
7. The Glidden House
8. Residence Inn Cleveland University Circle/Medical Center

## RETAIL

1. Fairfax Market (Meijer)
2. Shops at Church Square
3. Walgreens
4. Dave's Markets
5. Circle K
6. Dollar Tree
7. ALDI
8. Dixon's Groceries
9. Rite Aid

## FOOD

1. Penn Station  
Crepes N' Crisps  
Fluffy Duck Café  
Urban Kitchen & Deli
2. Burger King
3. McDonald's
4. Rumi's Market & Turkish Grill
5. China Mountain III
6. Angie's Soul Cafe
7. The Cleveland Bagel Company  
Souper Market
8. Popeyes Louisiana Kitchen
9. Provenance
10. The Jolly Scholar

## HOT SPOTS

1. University Circle
2. Case Western Reserve University
3. Little Italy
4. The Cleveland Museum of Art
5. Severance Music Center
6. Cleveland Museum of Natural History
7. Crawford Auto Aviation Museum
8. Museum of Contemporary Art Cleveland
9. Cleveland Institute of Art

