



FOR LEASE
644 Emerson Street
Palo Alto
2,238 sq. ft. Office Space

**FULL COMMISSION TO THE PROCURING BROKER
IF LEASED BY APRIL 30th, 2024**

SARAH BROWN

650.847.2020
sarah@ventanaps.com
DRE# 01992456

JOE MARTIGNETTI

650.847.2000
jmartignetti@ventanaps.com
DRE# 01116935

The information contained herein has been given to us by the owner of the property or other sources we deem reliable. We have no reason to doubt its accuracy, but we do not guarantee it. All information should be verified prior to purchase or lease. No warranty or representation, expressed or implied, is made as to the accuracy of the information contained herein.

Suite 210

SUITE HIGHLIGHTS

** Full Commission to Procuring Broker

if Leased by **APRIL 30th, 2024** **

2,238 SQ FT Office Space

Available Now

Open Floor Plan

Large Enclosed Office/Conference Room

Private Kitchen

Large Window Line with High Visibility

Ideally Located in Downtown Palo Alto

Walking Distance to CalTrain

Virtual and In-Person Tour Available



SARAH BROWN

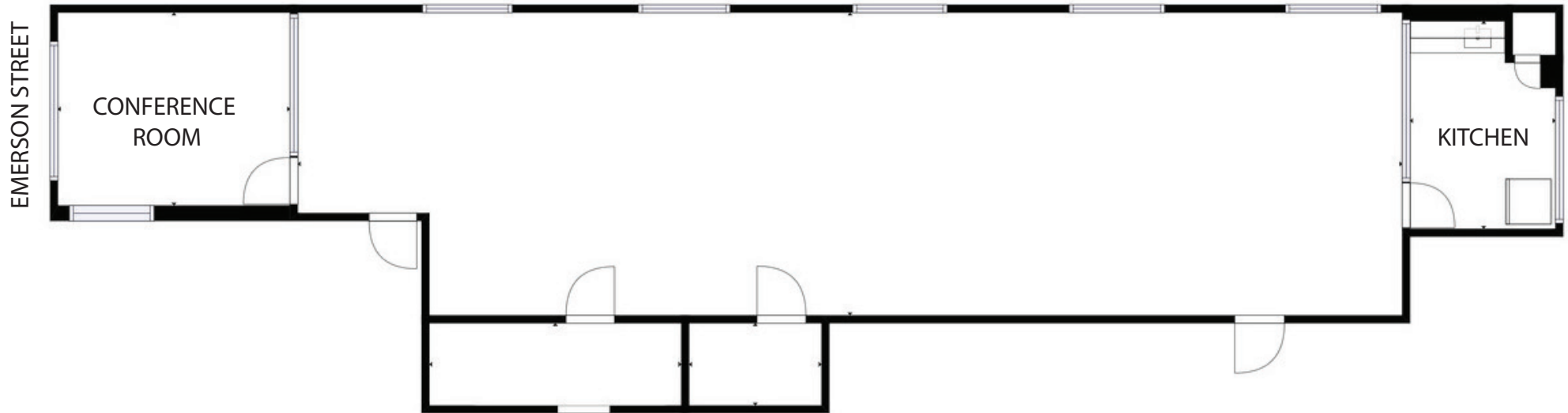
650.847.2020
sarah@ventanaps.com
DRE# 01992456

JOE MARTIGNETTI

650.847.2000
jmartignetti@ventanaps.com
DRE# 01116935

The information contained herein has been given to us by the owner of the property or other sources we deem reliable. We have no reason to doubt its accuracy, but we do not guarantee it. All information should be verified prior to purchase or lease. No warranty or representation, expressed or implied, is made as to the accuracy of the information contained herein.

FLOOR PLAN



SIZES AND DIMENSIONS ARE APPROXIMATE, ACTUAL MAY VARY.



SARAH BROWN

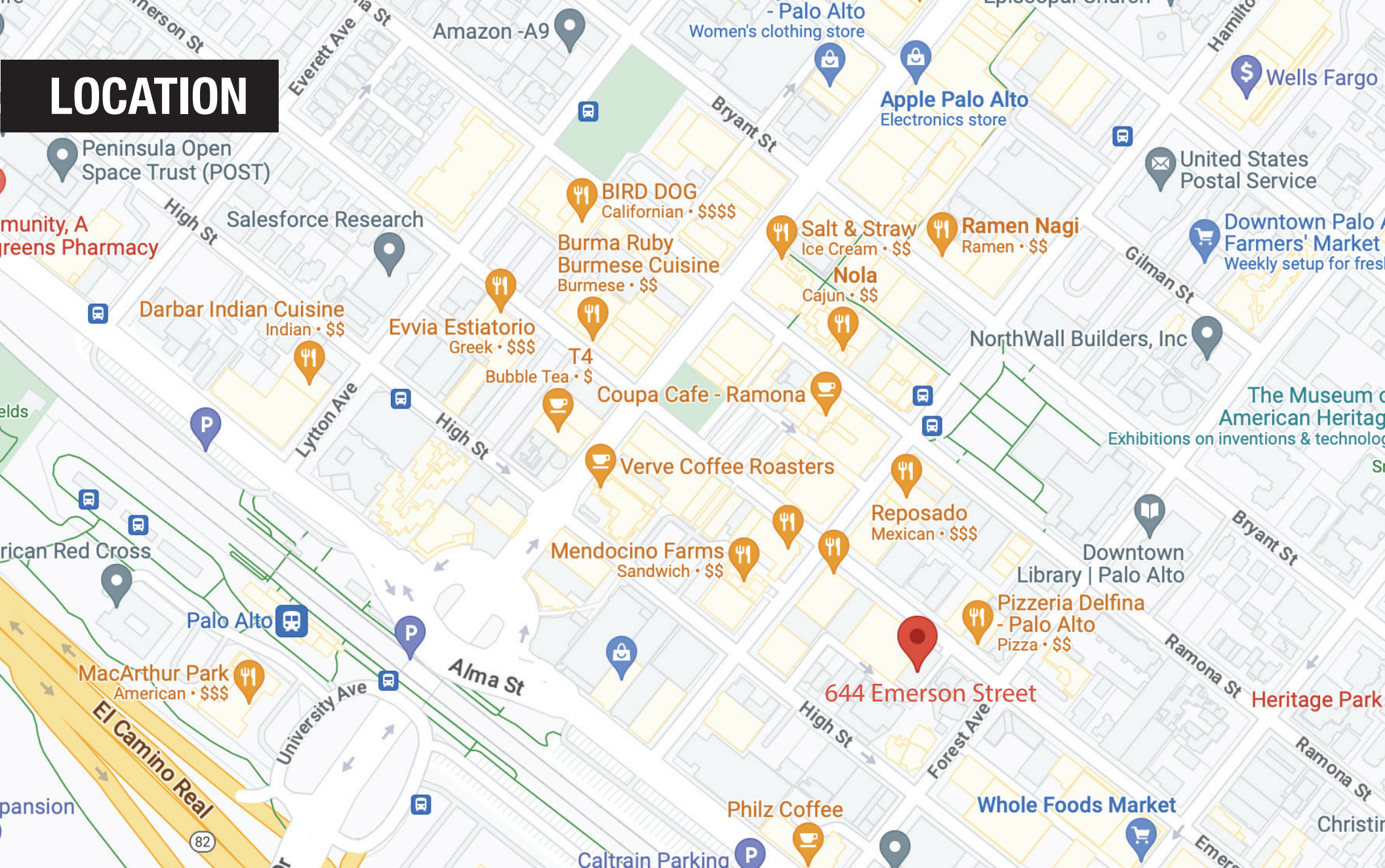
650.847.2020
sarah@ventanaps.com
DRE# 01992456

JOE MARTIGNETTI

650.847.2000
jmartignetti@ventanaps.com
DRE# 01116935

The information contained herein has been given to us by the owner of the property or other sources we deem reliable. We have no reason to doubt its accuracy, but we do not guarantee it. All information should be verified prior to purchase or lease. No warranty or representation, expressed or implied, is made as to the accuracy of the information contained herein.

LOCATION



SARAH BROWN

650.847.2020
sarah@ventanaps.com
DRE# 01992456

JOE MARTIGNETTI

650.847.2000
jmartignetti@ventanaps.com
DRE# 01116935

The information contained herein has been given to us by the owner of the property or other sources we deem reliable. We have no reason to doubt its accuracy, but we do not guarantee it. All information should be verified prior to purchase or lease. No warranty or representation, expressed or implied, is made as to the accuracy of the information contained herein.