



M E R I D I A N

147 S. CHERRY STREET, SUITE 200 | WINSTON-SALEM, NC 27101 | P 336.722.1986 | F 336.723.3173 | MERIDIANREALTY.COM

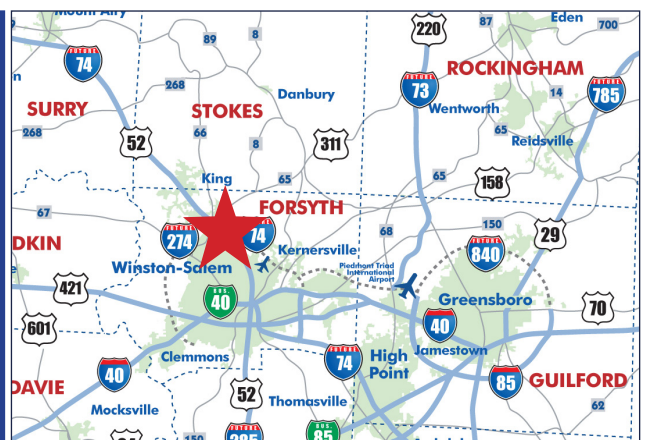
Corporate Office Building

165 Carriage Court

Winston-Salem, NC 27105



- 37,000± SF Corporate Office Building
- Expandable by 28,000± SF
- In Oak Summit Business Park
- Built in 2002
- 147 Parking Spaces (4/1,000)
- Amenities include:
 - Loading Dock - Outdoor Patio
 - Spacious Conference/Collaboration Areas



For more information:

John L. Ruffin, CCIM

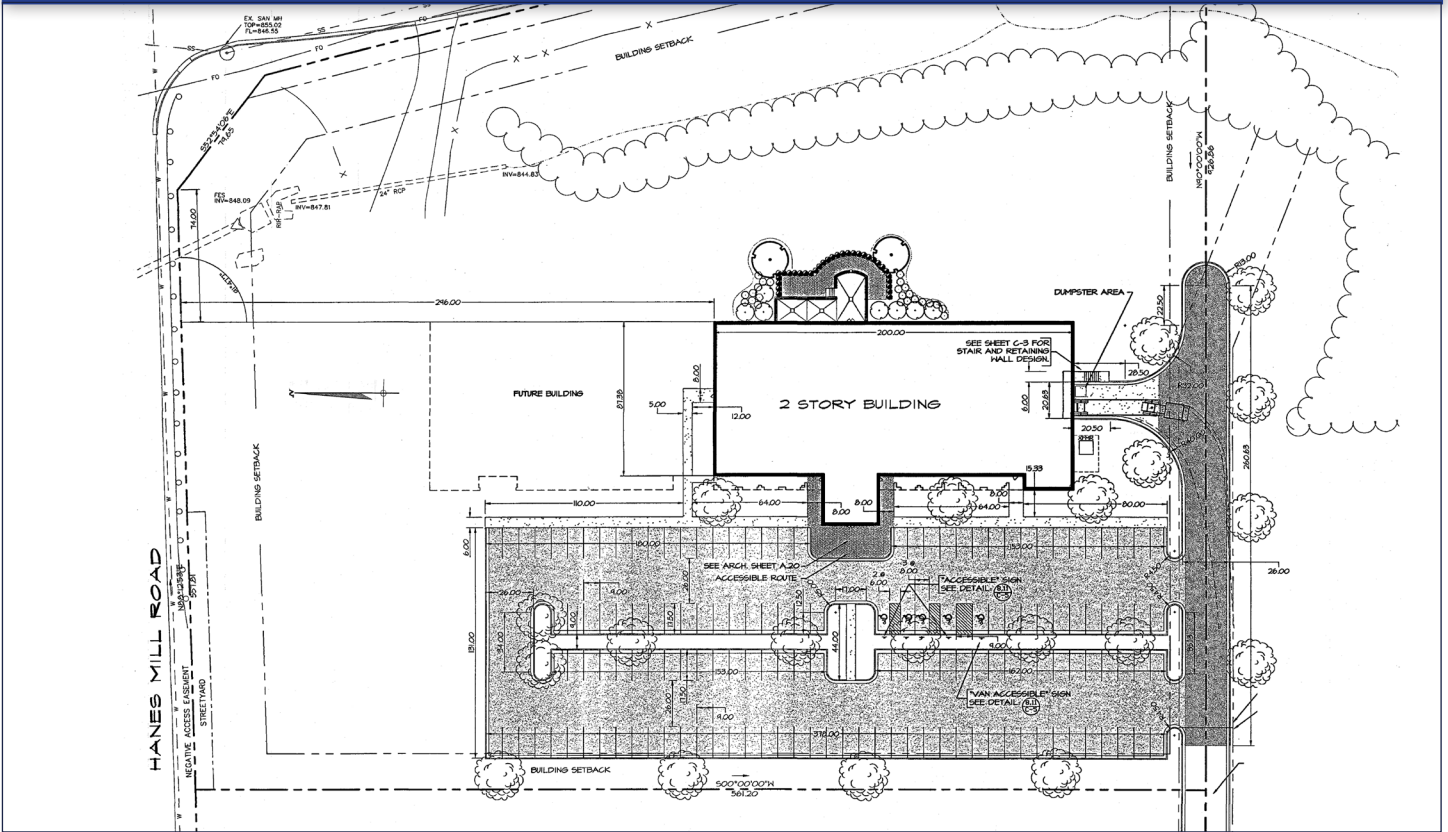
Jruffin@meridianrealty.com

336.480.2081

FOR SALE: \$3,750,000

WWW.MERIDIANREALTY.COM

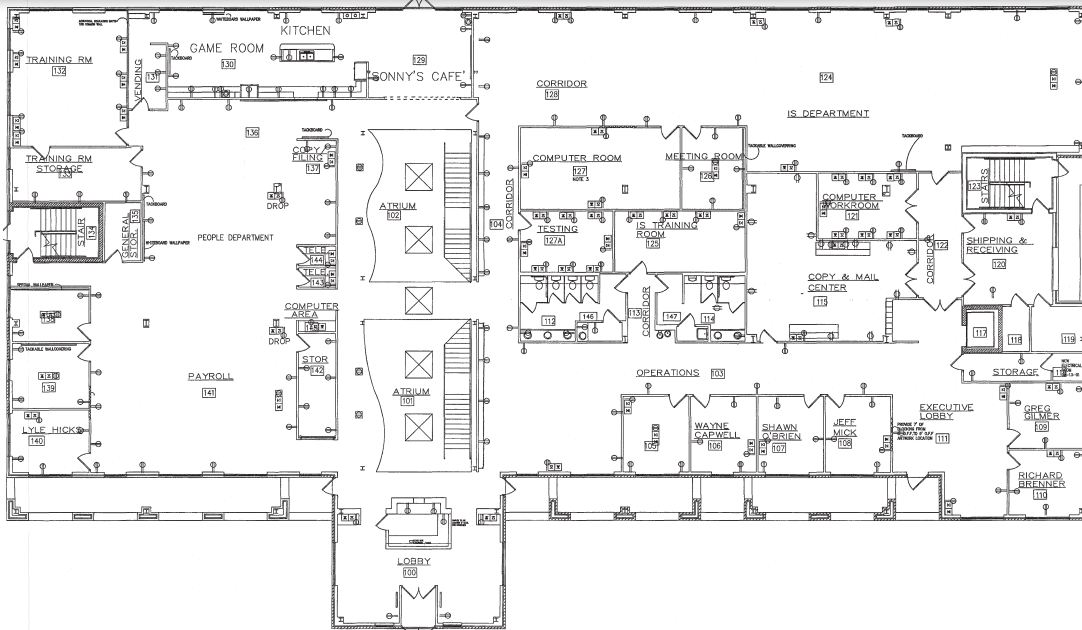
Site Plan



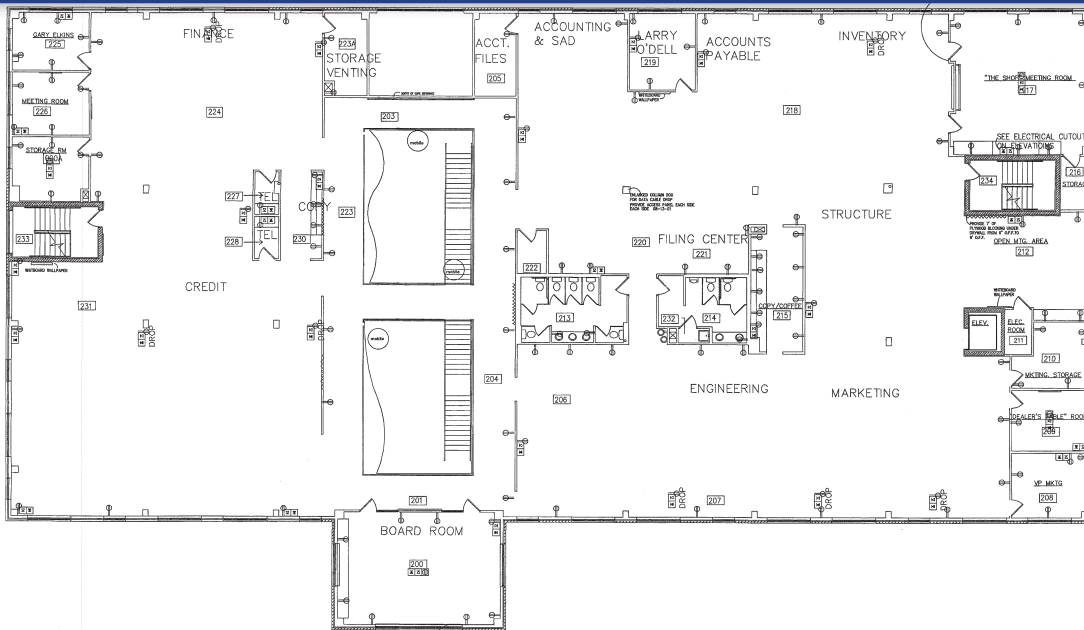
Interior Photos



First Floor



Second Floor



Demographics



Median Household Income



Total Businesses



Total Employees



Population

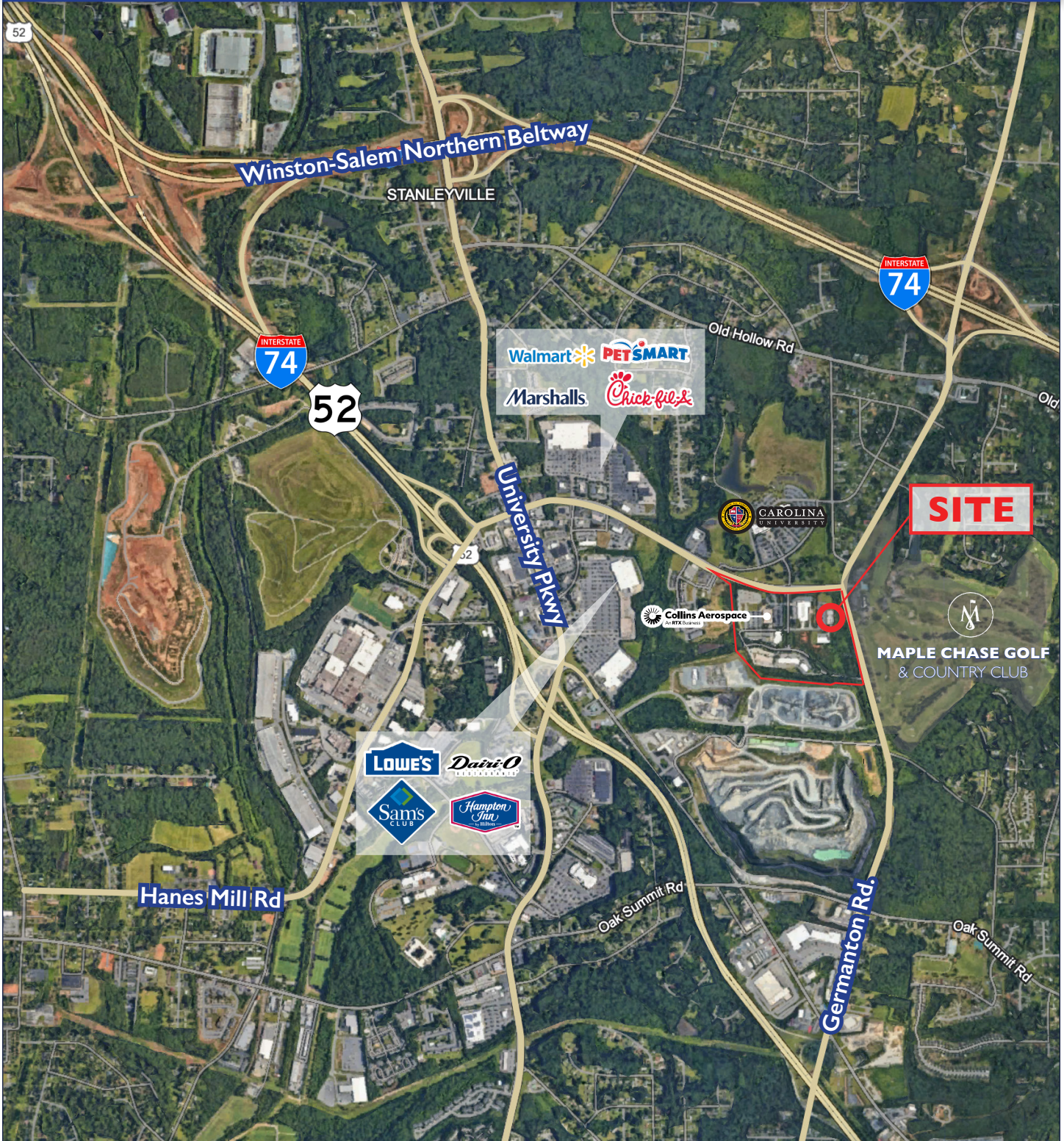


Unemployment Rate



Households

	Median Household Income	Total Businesses	Total Employees	Population	Unemployment Rate	Households
1 Mile Radius	\$50,624	263	11,256	2,624	7.3%	996
3 Mile Radius	\$49,170	1,173	27,925	31,827	20.2%	13,087
5 Mile Radius	\$54,351	2,588	45,341	87,187	16.7%	34,374



No warranty or representation (express or implied) is made as to the accuracy or completeness of the information set forth herein. All information is submitted subject to errors, omissions, change of price, prior lease or sale, and withdrawal without notice. All marketing material produced by the Meridian Realty Group is proprietary. Any reproduction is expressly prohibited.



THE MERIDIAN REALTY GROUP | 147 S. CHERRY STREET, SUITE 200 | WINSTON-SALEM, NC 27101

P 336.722.1986 | F 336.723.3173