

Office ★ LEASE

LanCarte.com

4255 W RISINGER RD, FORT WORTH, TX, 76123



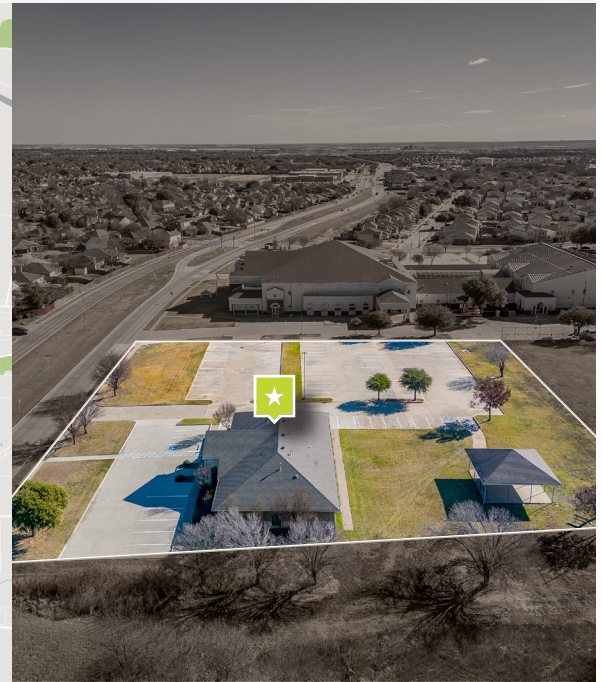
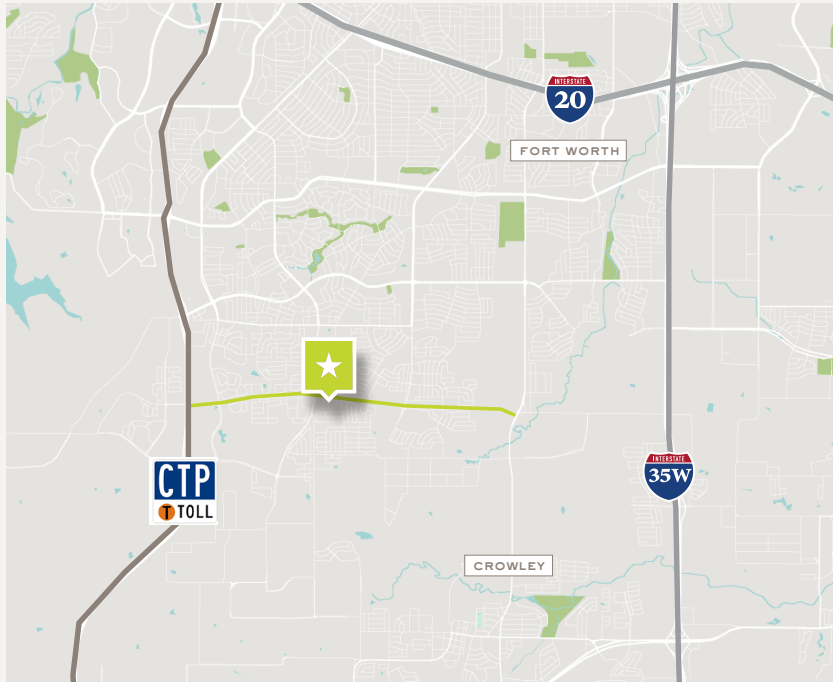
Colt Ellison
817-565-9718
cellison@lancarte.com

Matt Murff
806-674-2118
mmurff@lancarte.com

Office ★ LEASE

4255 W RISINGER RD

LanCarte.com



PROPERTY FEATURES

- +/- 5,000 SF
- 11 Private Offices, Large Conference Room, Full Size Breakroom, and Open Reception Area.
- Outside Area perfect for a daycare
- Abundant Parking
- West Southwest Fort Worth Submarket
- Conference Room table included

LOCATION OVERVIEW

4255 W Risinger Rd is located in southwest Fort Worth within a growing, family-oriented area with strong household incomes and a diverse population. The surrounding residential neighborhoods and above-average household sizes make this an ideal location for both office and daycare uses. Its proximity to major roadways provides convenient access for commuters and parents, while the steady population growth supports ongoing demand for childcare services, making this a highly desirable site for these uses.

LEASING STRUCTURE

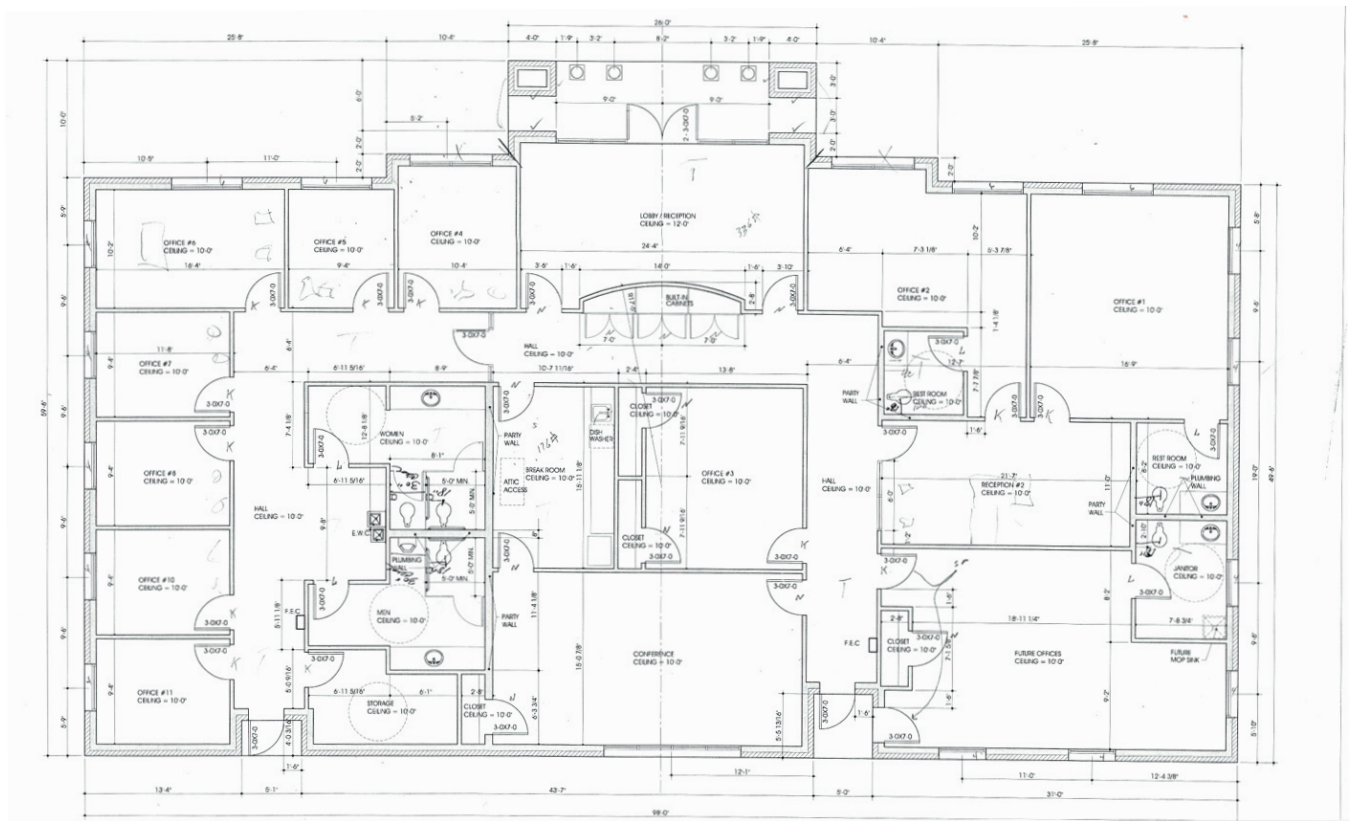
CONTACT BROKER

Office ★ LEASE

4255 W RISINGER RD

LanCarte.com

FLOORPLAN



Office ★ LEASE
4255 W RISINGER RD

LanCarte.com

INTERIOR



Office ★ LEASE
4255 W RISINGER RD

LanCarte.com

EXTERIOR





LANCARTE COMMERCIAL

BROKERAGE ★ PROPERTY MANAGEMENT

Relentlessly Pursuing What Matters

Matt Murff
806-674-2118
mmurff@lancartecre.com

Colt Ellison
817-565-9718
cellison@lancarte.com

The information provided herein was obtained from sources believed to be reliable. However, LanCarte Commercial makes no guaranties, warranties or representations as to the completeness or accuracy thereof. The presentation of this property is submitted subject to errors, omissions, change of price or conditions, prior to sale or lease, or withdrawal without notice. Copyright 2026 LanCarte Commercial Real Estate, LLC.