

# CHANDLER BUSINESS PARK

3240 N DELAWARE ST | CHANDLER, AZ 85225

**FOR LEASE**  
**\$1.50 SF GRS**



## BUILDING DETAILS

- $\pm 4,960$  SF Total
- $\pm 3,224$  SF Industrial Space
- $\pm 1,736$  SF Office Space
- Evap Cooled Warehouse
- Sprinklers
- Large Reception
- 4 Offices
- 2 Restrooms
- Truckwell and Grade Level Loading
- 13 Parking Spaces
- 16' Clear Height
- Power; 400A, 120/208V, 3P
- Easy Access to Loop 101 & US 60



**$\pm 4,960$  SF**

**Jim Stockwell**  
D 480.621.3286  
M 602.818.5010  
jstockwell@cpiaz.com

**Mike Goldwater**  
D 480.621.4020  
M 602.332.6360  
mgoldwater@cpiaz.com



**COMMERCIAL PROPERTIES INC.**

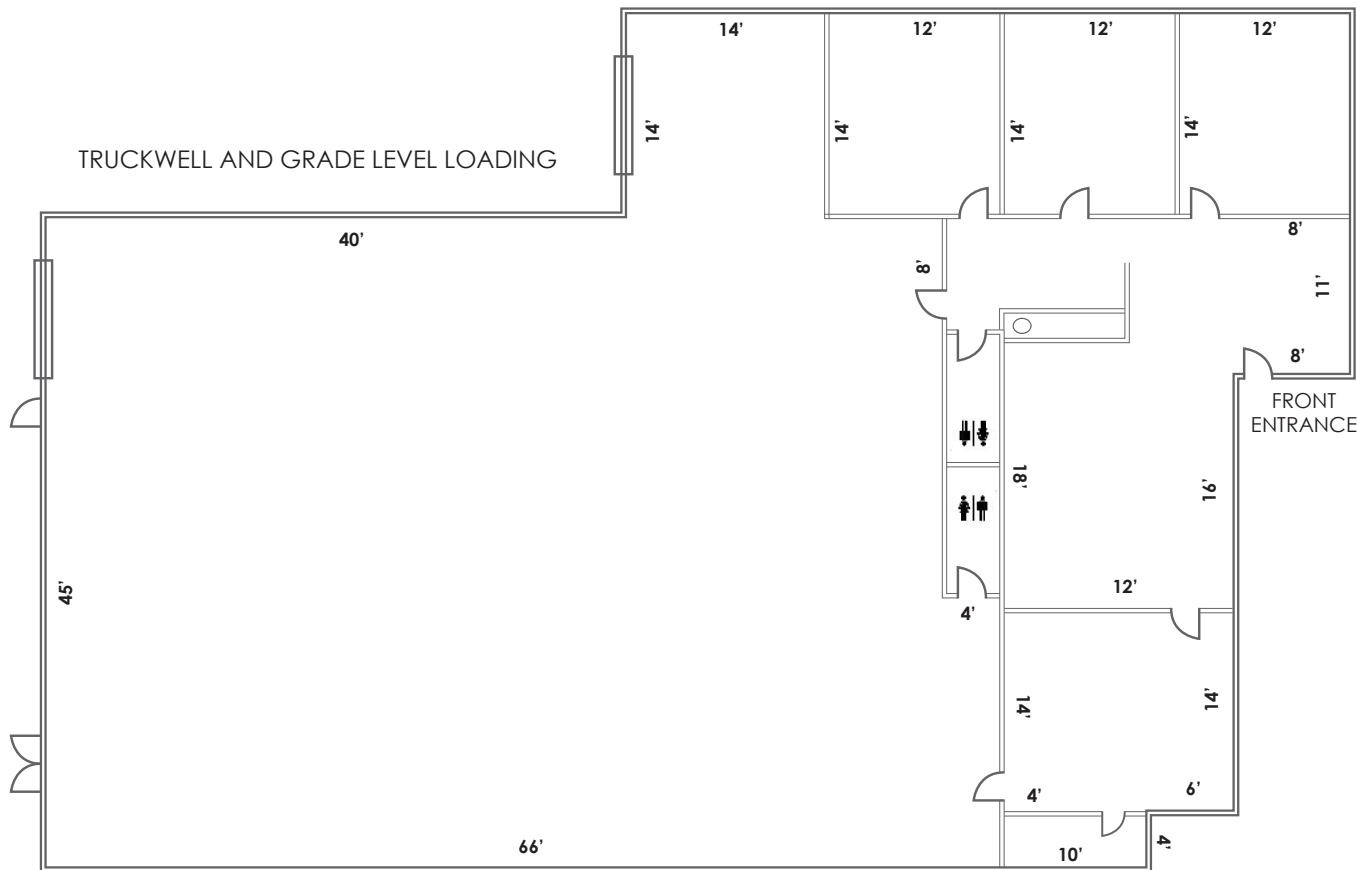
Locally Owned. Globally Connected. CORFAC INTERNATIONAL

TEMPE: 2323 W. University Drive, Tempe, AZ 85281 | 480.966.2301  
SCOTTSDALE: 8777 N. Gainey Center Dr., Suite 245, Scottsdale, AZ 85258 | [www.cpiaz.com](http://www.cpiaz.com)

# CHANDLER BUSINESS PARK

3240 N DELAWARE ST | CHANDLER, AZ 85225

**FOR LEASE**  
**\$1.50 SF GRS**



The information contained herein has been obtained from various sources. We have no reason to doubt its accuracy; however, J & J Commercial Properties, Inc. has not verified such information and makes no guarantee, warranty or representation about such information. The prospective buyer or lessee should independently verify all dimensions, specifications, floor plans, and all information prior to the lease or purchase of the property. All offerings are subject to prior sale, lease, or withdrawal from the market without prior notice. Effective 02/27/25

**Jim Stockwell**  
D 480.621.3286  
M 602.818.5010  
jstockwell@cpiaz.com

**Mike Goldwater**  
D 480.621.4020  
M 602.332.6360  
mgoldwater@cpiaz.com



**COMMERCIAL PROPERTIES INC.**

Locally Owned. Globally Connected. CORFAC INTERNATIONAL

TEMPE: 2323 W. University Drive, Tempe, AZ 85281 | 480.966.2301  
SCOTTSDALE: 8777 N. Gainey Center Dr., Suite 245, Scottsdale, AZ 85258 | www.cpiaz.com