

OFFICE/WAREHOUSE SPACE FOR LEASE

I-430 & COLONEL GLENN | LITTLE ROCK, AR

Commercial
Realty LLC

New
Construction



LOCATION

- 11 Remington Drive

AVAILABLE

- 4,564 SQ. FT.

LEASE RATE

- Call Agent for Pricing

TI ALLOWANCE

- \$25 SF / Office
- \$10 SF / Warehouse

HIGHLIGHTS

- 10 x 10 roll up door with access to dock high sunken truck well
- Warehouse has 14' clear height
- Zoned POD: O-3 uses
- Excellent private parking with 44 parks and security lighting

Contact Us:

JACQUELINE BOYETTE

M: 501.519.4008 | D: 501.219.0919

jboyette@commercialrealtyllc.com

Commercial Realty, LLC

1 Remington Drive, Suite 100
Little Rock, Arkansas 72204

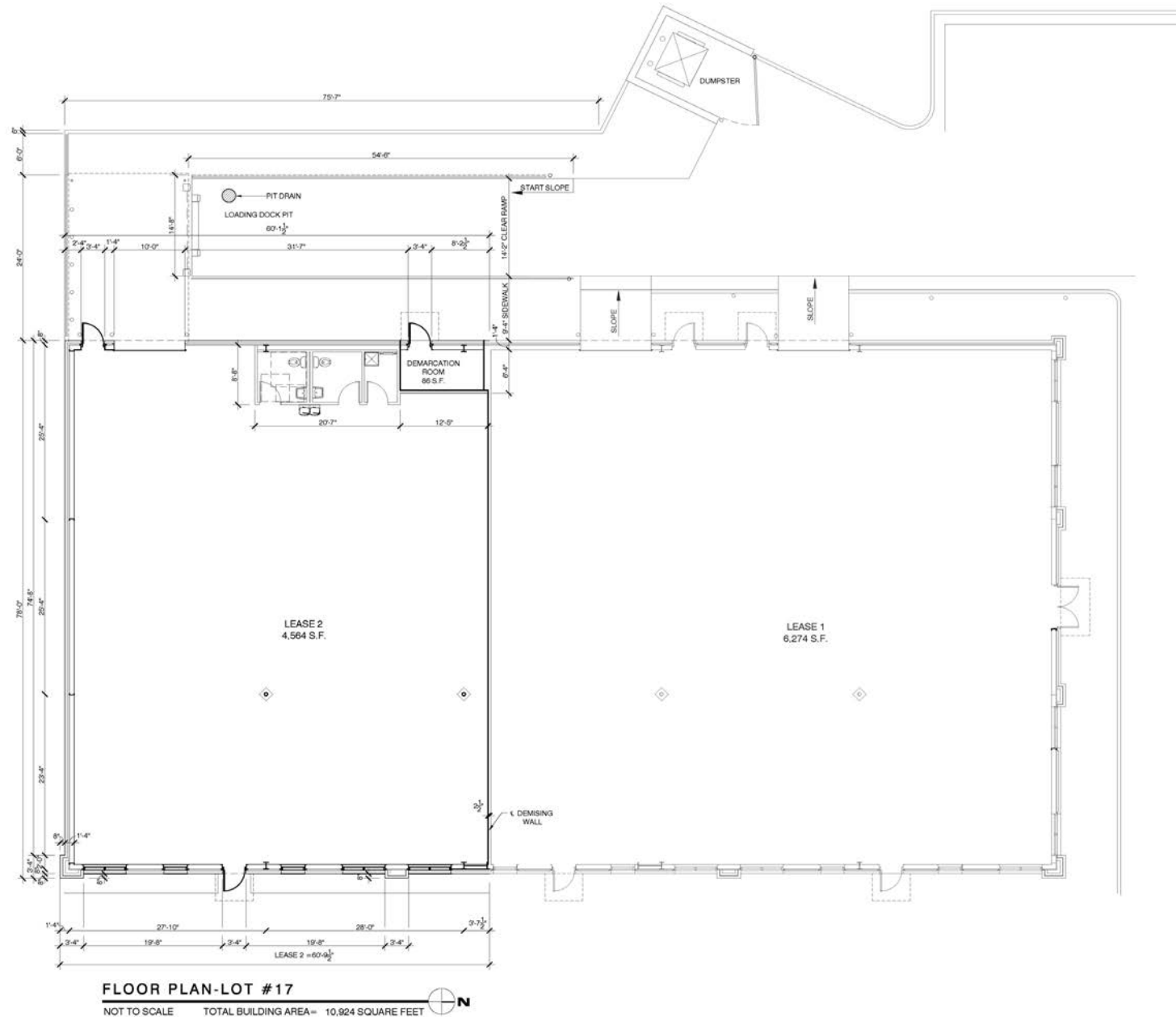
501.219.0919
www.commercialrealtyllc.com

The statements, terms and conditions set forth in this advertisement are deemed reliable but not guaranteed and remain, at all times, subject to change by the property owner(s) without notice. The property owner(s) reserve the right, at its sole and absolute discretion to adjust the price and remove the property from the market at any time without notice. The property owner(s) reserves the right to reject any and all offers and transactions are subject to the execution of the definitive agreements. Commercial Realty, LLC makes no guarantees, representations or warranties regarding its accuracy.

Floor Plan

#11 Remington Drive | Little Rock, AR

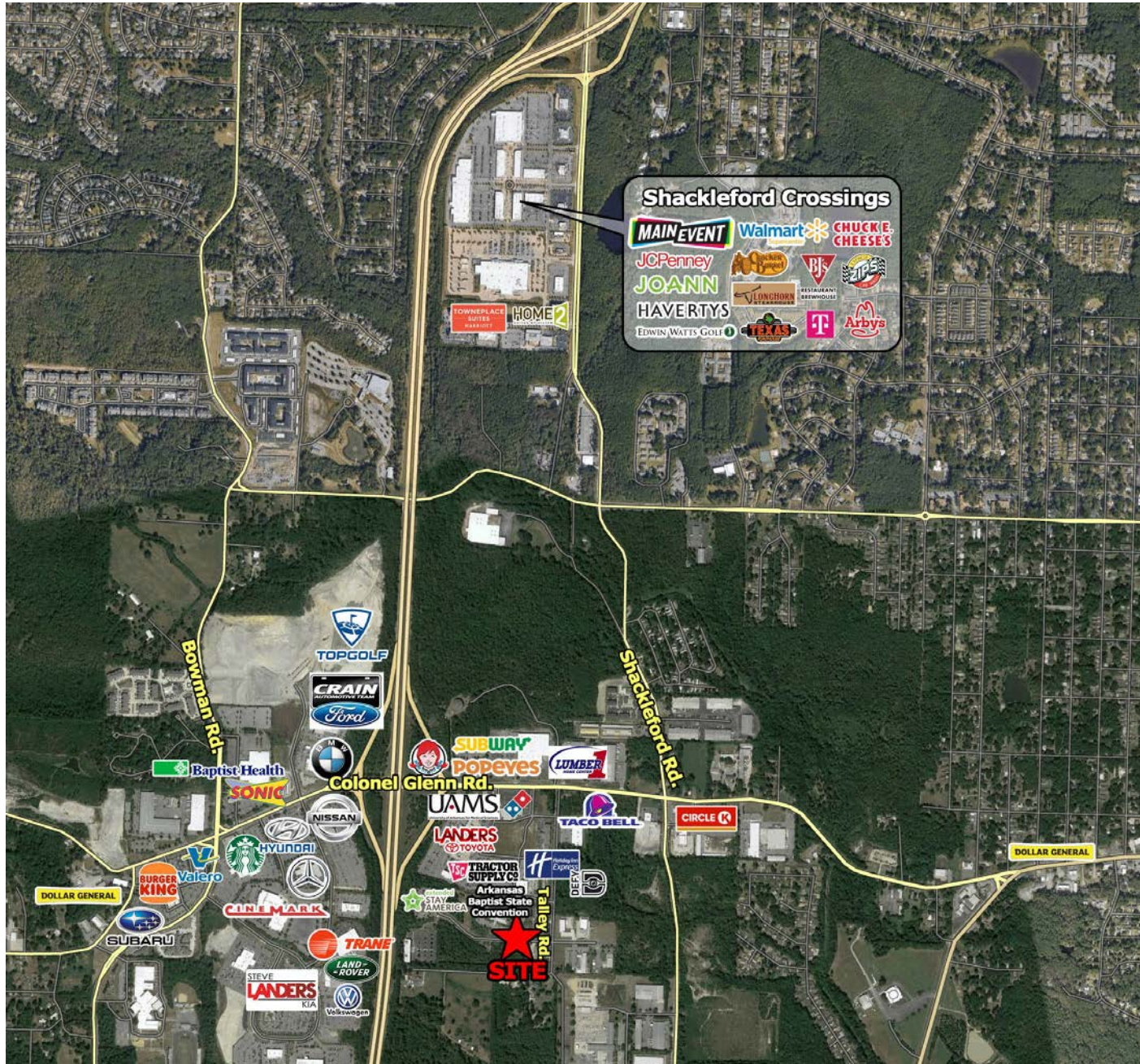
Commercial
Realty LLC



Aerial Map

#11 Remington Drive | Little Rock, AR

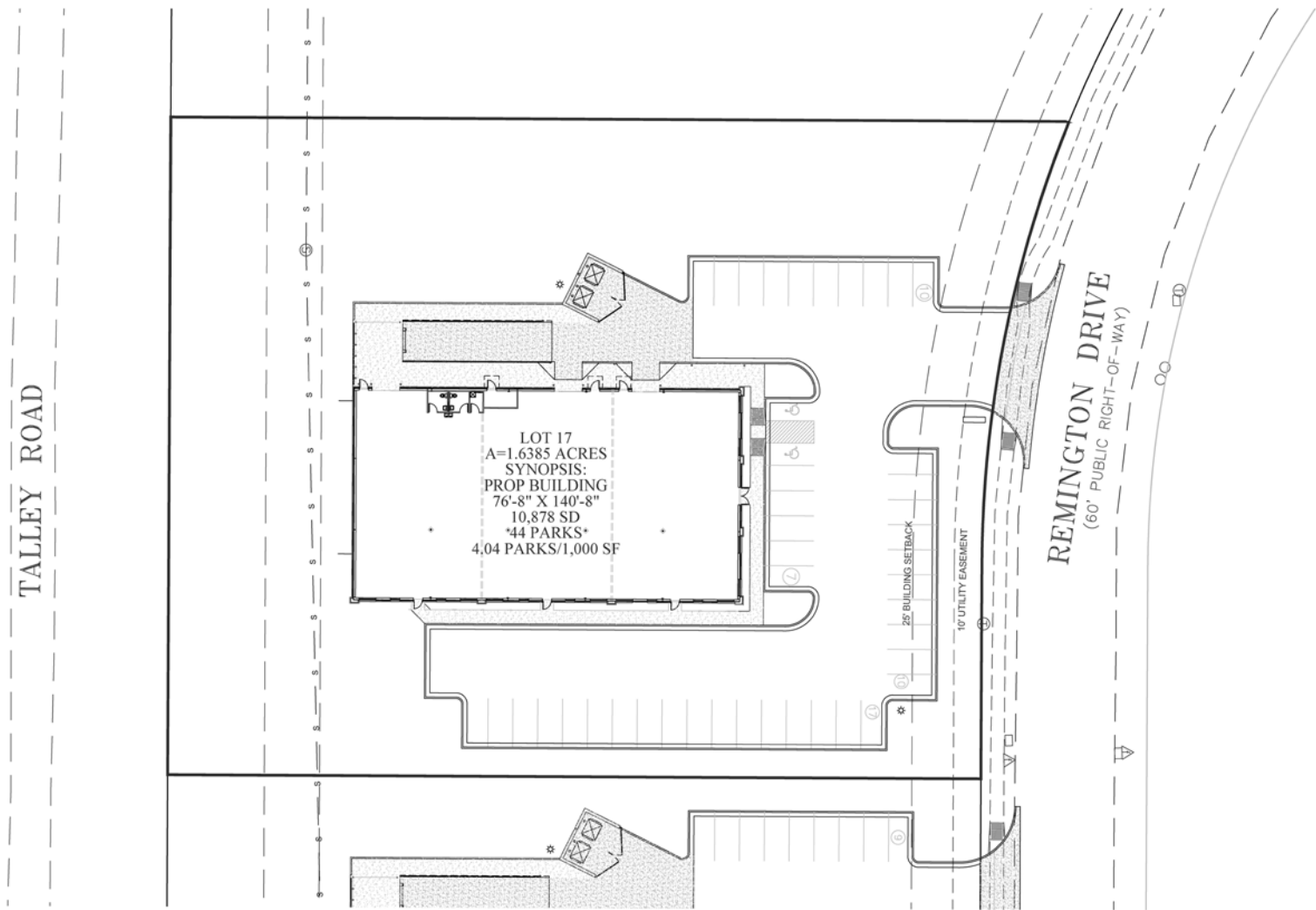
Commercial
Realty^{LLC}



Site Plan

#11 Remington Drive | Little Rock, AR

Commercial
Realty LLC



PropertyAerial View

#11 Remington Drive | Little Rock, AR

Commercial
Realty^{LLC}

