

6507 North Road | Duncan, BC

Duncan Meadows Golf Course For Sale

- ▶ 159.33 acre 18-hole, 6,616 yard championship golf course
- ▶ 12,000 SF clubhouse with restaurant, 175-seat banquet facility, pro-shop
- ▶ Liquor primary license
- ▶ 8,000 SF, 2-storey manager residence
- ▶ 5,000 SF maintenance building and equipment
- ▶ Course details at: DuncanMeadows.com

Gary Haukeland*

Senior Vice President
604 691 6693
ghaukeland@naicommercial.ca

*Personal Real Estate Corporation

J-D Murray

Senior Associate
604 691 6664
jdmurray@naicommercial.ca

NAI Commercial

1075 W Georgia St, Suite 1300

Vancouver, BC V6E 3C9

+1 604 683 7535

naicommercial.ca

Property Details

Civic Address

6507 North Road
Duncan, BC V9L 6K9

Legal Description

Lot 2, Sections 4, 5, And 6, Range
3, Somenos District, Plan VIP52892
PID: 017-442-087

Zoning Designation

C4 (Commercial Recreational Zone)
allowing for driving range, golf
course, hotel, restaurant, and tourist
accommodation uses.

Price

\$16,900,000

▶ WATCH DRONE VIDEO

6507 North Road Duncan, BC

The Opportunity

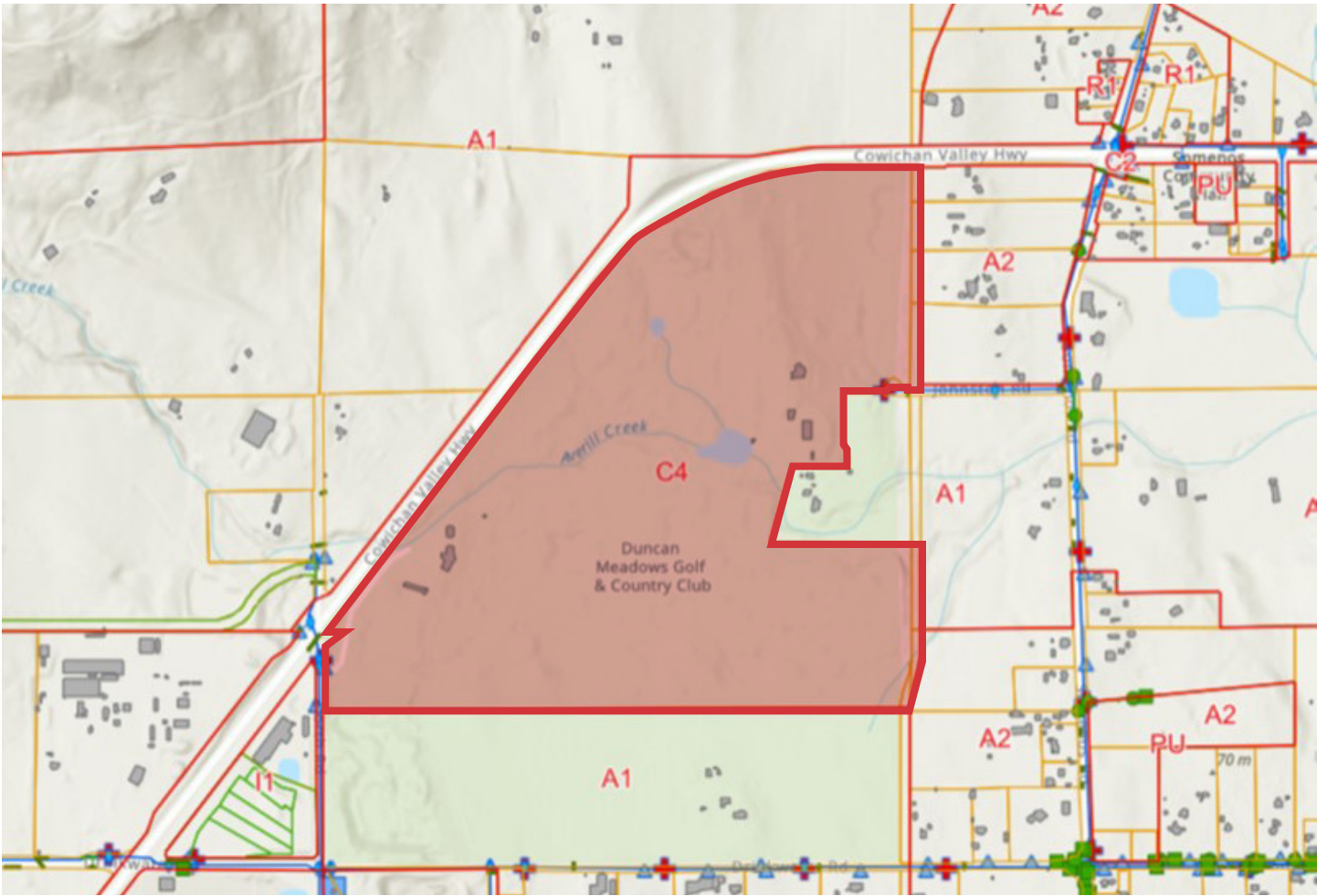
The property represents an opportunity to acquire the Duncan Meadows Golf Course. Sale includes an 18-hole, championship, par 72 golf course and on a 159.33-acre lot. The golf course is home to a 12,000 SF clubhouse, complete with pro-shop, 175-seat banquet facility (including two commercial kitchens and liquor primary license), a 5,000 SF maintenance building, and an 8,000 SF manager residence. The sale includes all golf and maintenance equipment. Score Golf Magazine has labeled Duncan Meadows as one of “the top-10 most underrated golf courses in all of Canada”.

Location

Duncan Meadows is located in the City of Duncan within the District of North Cowichan on Vancouver Island, British Columbia. Located on the Cowichan Valley Highway (Hwy 18), between Drinkwater and Somenos Roads. The course is 10-minutes to downtown Duncan and all amenities, 30 minutes to downtown Nanaimo, with access to the rest of Vancouver Island, and the City of Vancouver.



The course is an exceptionally strong mix of parkland and links style holes exquisitely sculpted from the gently rolling and verdant landscape. Meandering creeks crossed with small rock bridges recall the roots of the game in Scotland while the perfect manicure of the bentgrass greens is consistent with today's best conditioned facilities.





SOMENOS

COWICHAN VALLEY HWY

18

TRANS-CANADA HWY

SOMENOS LAKE

COWICHAN DISTRICT HOSPITAL

CANADA AVE

DOWNTOWN DUNCAN

DUNCAN AIRPORT (DUQ)

EAGLE HEIGHTS



Drive Times

from Duncan Meadows Golf Course

10 MIN to Downtown Duncan

30 MIN to Downtown Nanaimo

60 MIN to Victoria

Gary Haukeland*
Senior Vice President
604 691 6693
ghaukeland@naicommercial.ca
*Personal Real Estate Corporation

J-D Murray
Senior Associate
604 691 6664
jdmurray@naicommercial.ca



©2023 NAI Commercial (BC) Ltd. All rights reserved.
No warranty or representation, express or implied, is made as to the accuracy of the information contained herein, and the same is submitted subject to errors, omissions, change of price, rental or other conditions, prior sale, lease or financing, or withdrawal without notice, and of any special listing conditions imposed by our principals no warranties or representations are made as to the condition of the property or any hazards contained therein are any to be implied. Aerial image(s) courtesy of Google, Landsat/Copernicus.

NAI Commercial
1075 W Georgia St, Suite 1300
Vancouver, BC V6E 3C9
+1 604 683 7535
naicommercial.ca