

INCENTIVE OFFERED!
Offering 2 months free rent if lease is signed by 01/01/2025

BERKSHIRE HATHAWAY | UTAH PROPERTIES
HOMESERVICES
COMMERCIAL DIVISION



BEAUTIFUL OFFICE/RETAIL/MEDICAL SPACE AVAILABLE ON HEBER CITY MAIN STREET
Office/Retail/Medical

HEBER CITY 150 N MAIN STREET | HEBER CITY, UTAH 84032

FOR LEASE

JILL SNYDER
(435) 671-0793
jill@wswcommercial.com

TODD McLACHLAN
(801) 520-9005
toddm@bhhsutah.com

CHELSEA WALL
(435) 671-3541
chelsea@wswcommercial.com

- 2 MAIN LEVEL SPACES AVAILABLE
- 1 SECOND LEVEL SPACE AVAILABLE
- 4,141 SF OF BASEMENT SUITES AVAILABLE
- AMPLE OFF-STREET PARKING
- EXCELLENT VISIBILITY

© 2024 BHH Affiliates, LLC. An independently owned and operated franchisee of BHH Affiliates, LLC. Berkshire Hathaway HomeServices and the Berkshire Hathaway HomeServices symbol are registered service marks of Columbia Insurance Company, a Berkshire Hathaway affiliate. Equal Housing Opportunity. Information not verified or guaranteed. Berkshire Hathaway HomeServices and/or its representatives do not warrant or guarantee this information. Information herein was provided by Owner/Seller. Lessee/Purchaser is responsible to confirm any information considered a factor in a decision to lease or purchase.

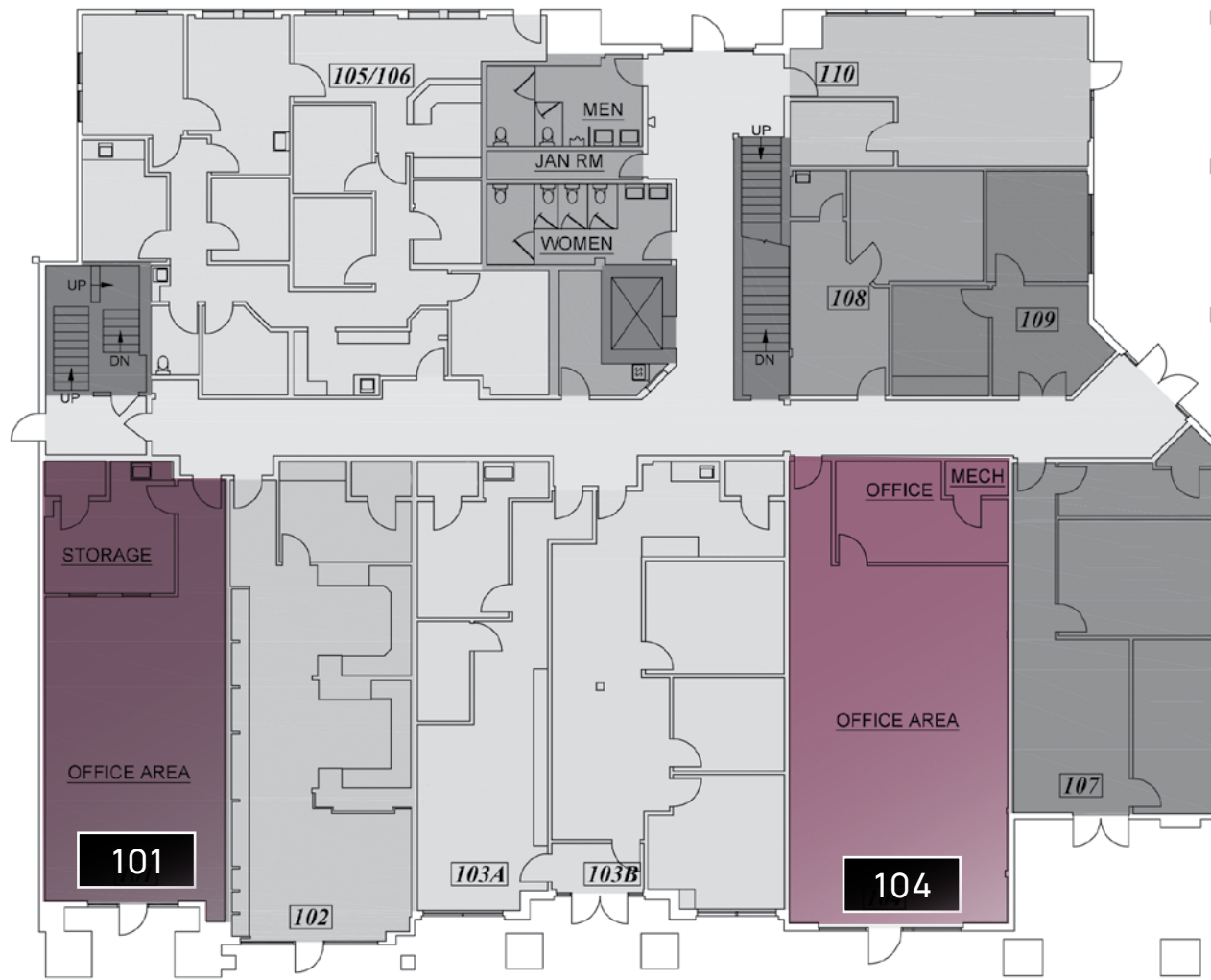
PROPERTY DETAILS

FOR LEASE 150 N MAIN STREET | HEBER CITY, UTAH 84032



FIRST FLOOR

FOR LEASE 150 N MAIN STREET | HEBER CITY, UTAH 84032



FIRST FLOOR
\$25 PSF NNN + \$7.25 CAM

- SUITE 101 : 1,050 SF
- SUITE 104 : 1,359 SF

LEASED
 AVAILABLE

SECOND FLOOR

FOR LEASE 150 N MAIN STREET | HEBER CITY, UTAH 84032



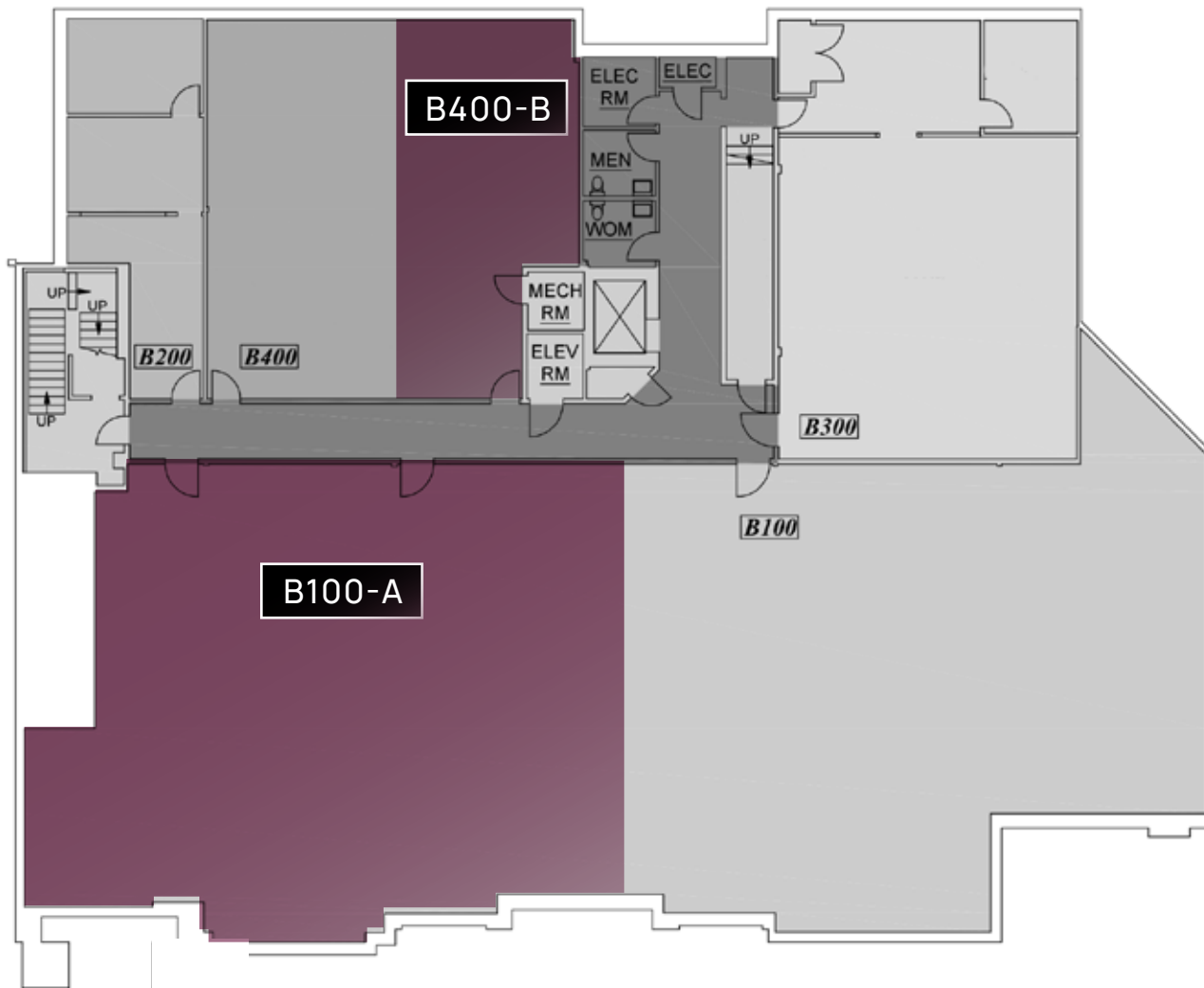
SECOND FLOOR
\$23 PSF NNN + \$7.25 CAM

- SUITE 206 : 1,273 SF

 LEASED
 AVAILABLE

BASEMENT FLOOR

FOR LEASE 150 N MAIN STREET | HEBER CITY, UTAH 84032



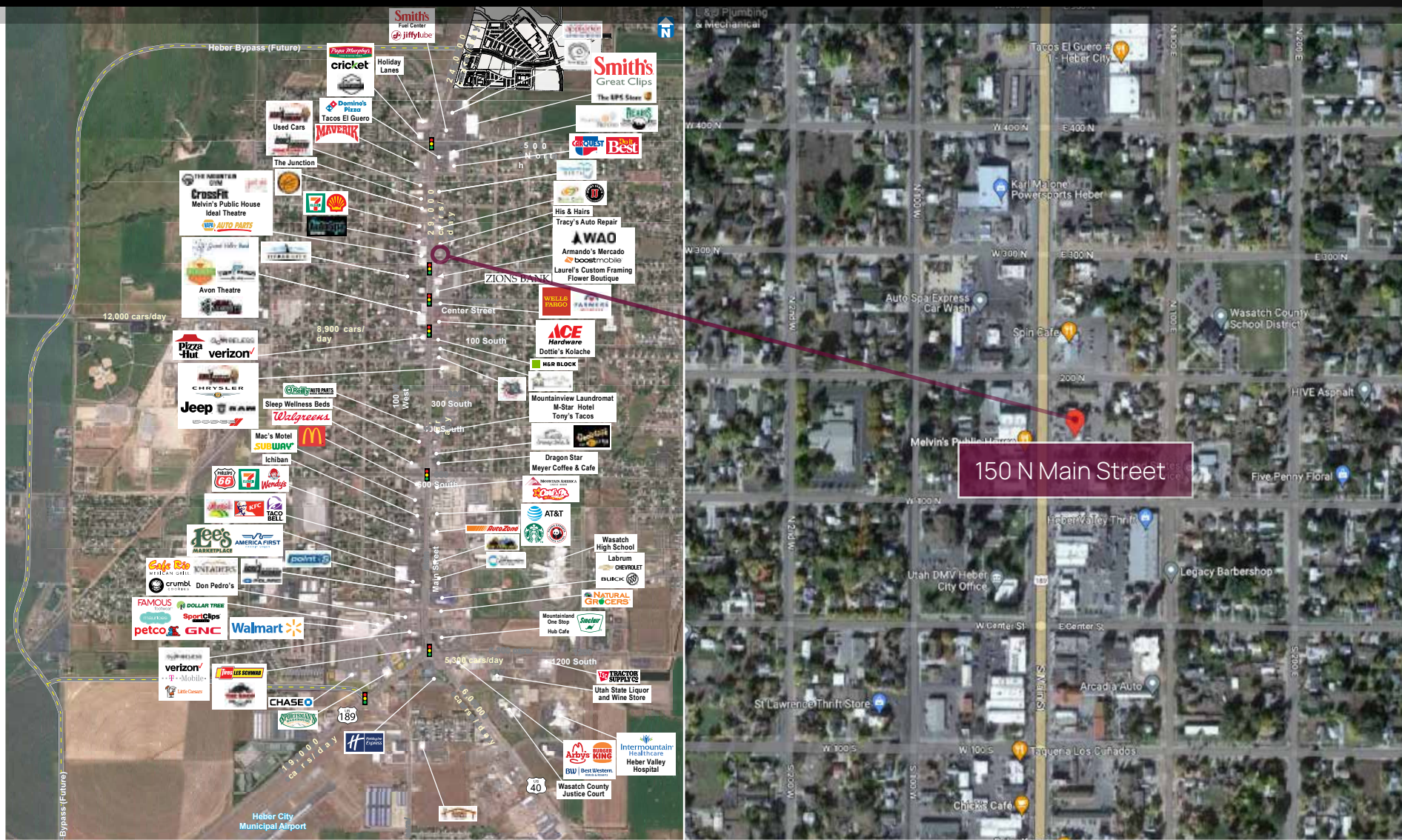
BASEMENT FLOOR
\$15 PSF NNN + \$7.25 CAM

- B100-A: 3,246 SF
- B400-B: 895 SF

LEASED
 AVAILABLE

LOCATION

FOR LEASE 150 N MAIN STREET | HEBER CITY, UTAH 84032





FOR LEASE

150 N MAIN STREET
HEBER CITY, UTAH 84032

- FIRST FLOOR
\$25 PSF NNN + \$7.25 CAM
 - Suite 101 : 1,050 SF
 - Suite 104 : 1,359 SF
- SECOND FLOOR
\$23 PSF NNN + \$7.25 CAM
 - Suite 206 : 1,273 SF
- BASEMENT SUITES
\$15 PSF NNN + \$7.25 CAM
 - B100-A : 3,246 SF
 - B400-B : 895 SF
- Recently renovated
- Ample off-street parking
- Excellent visibility on Heber Main Street
- Strong tenant-mix
 - Edward Jones
 - First American Title
 - Wasatch Wellness

i

[BHHSUTAH.COM](https://bhhsutah.com)

JILL SNYDER
(435) 671-0793
jill@wswcommercial.com

TODD McLACHLAN
(801) 520-9005
toddm@bhhsutah.com

CHELSEA WALL
(435) 671-3541
chelsea@wswcommercial.com

**BERKSHIRE
HATHAWAY** | UTAH
HOMESERVICES | PROPERTIES

COMMERCIAL DIVISION