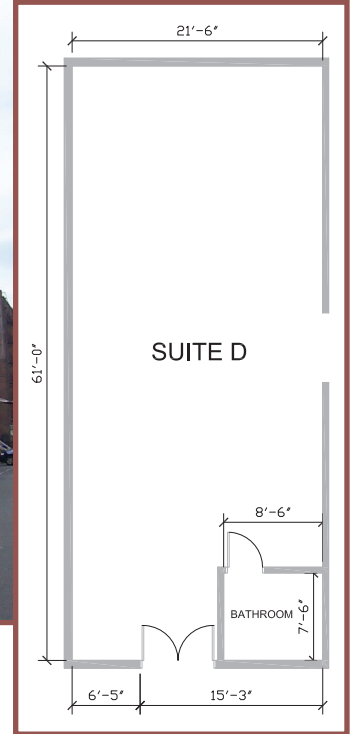


FOR LEASE - CLOSE-IN N.W.

1,316 Sq. Ft. OFFICE - SHOWROOM -
PRODUCTION SPACE - GREAT FREEWAY ACCESS



Location:

1991 NW Upshur Street, Suite D
Portland, Oregon 97209

Zoning:

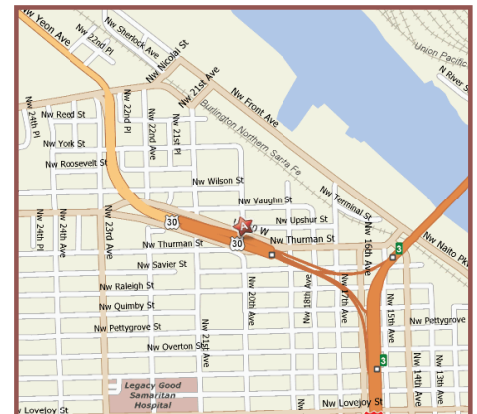
IG1 (General Industrial) , City of Portland

Suite D:

Shell Area: 1,316 sq ft, creative space, private bathroom
HVAC: Yes
Clearance: 12 ft
Electrical: Single Phase
Loading: Glass double man door at entrance
Lease Rate: \$1,800/month NNN (NNN's approx. \$152.86/month)
Dock level access

For further
information contact
Larry Conn at:
(503) 635-8668
lconn@jbcpx.com

www.jbcpx.com



JBC JACKSON · BEALL · AND CONN · INC

The information herein is believed to be accurate but is not guaranteed by Jackson, Beall and Conn, Inc