

FOR LEASE

21,589 SF

WEST PARK CORPORATE CAMPUS

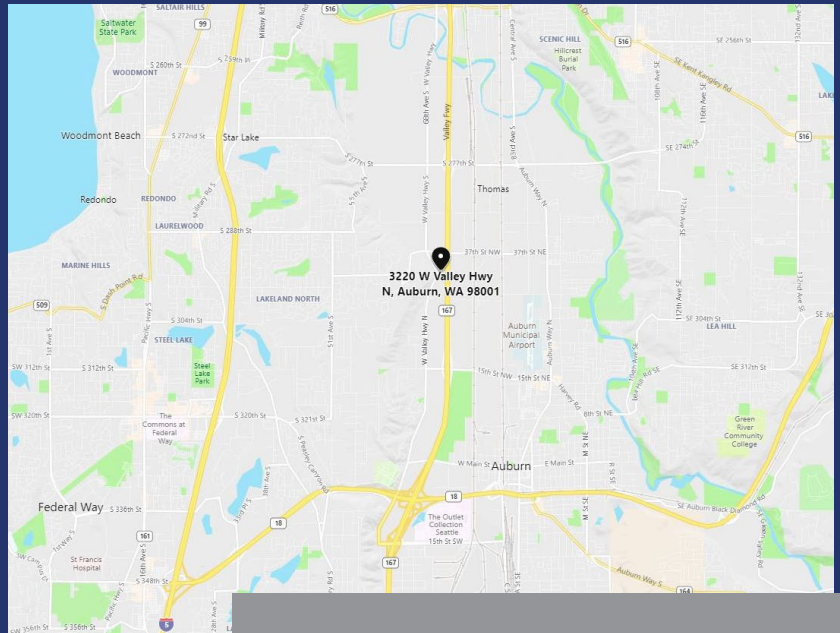
3500 W VALLEY HWY N | AUBURN, WA



DOCK HIGH WAREHOUSE/OFFICE SPACE

HIGHLIGHTS

- 21,589 SF (Divisible to 11,663 SF & 9,926 SF)
- 2,800 total office SF (1,000 SF & 1,800 SF)
- 3-phase power
- 30' clear height
- Excellent office layout
- Sprinklered
- Excellent Highway 167 frontage
- Class A image
- Excellent access and proximity to I-5, SR-18 and Hwy-167
- Built in 2000
- Available 2/1/25
- **Contact brokers for rates**



EXCLUSIVELY OFFERED BY:

Arne Svendsen
(206) 947-2885
asvendsen@andoverco.com

Brian Bruininks
(206) 856-6249
bbruininks@andoverco.com

West Park Corporate Campus is owned and operated by:



THE ANDOVER COMPANY, INC./CORFAC INTERNATIONAL
900 SW 16th St, Ste 100 | Renton, WA 98057 | (206) 244-0770 | www.andoverco.com



The information contained herein has been obtained from reliable sources, but is not guaranteed. A prospective buyer/tenant should verify each item relating to this property and all information contained herein.

FOR LEASE

21,589 SF

WEST PARK CORPORATE CAMPUS

3500 W VALLEY HWY N | AUBURN, WA



ADDRESSES

- Building **A**: 1220 37th St NW
- Building **B**: 3500 W Valley Hwy N
- Building **C**: 3402 W Valley Hwy N
- Building **D**: 3320 W Valley Hwy N

EXCLUSIVELY OFFERED BY:

Arne Svendsen
(206) 947-2885
asvendsen@andoverco.com

Brian Bruininks
(206) 856-6249
bbruininks@andoverco.com

West Park Corporate Campus is owned and operated by:



THE ANDOVER COMPANY, INC./CORFAC INTERNATIONAL
900 SW 16th St, Ste 100 | Renton, WA 98057 | (206) 244-0770 | www.andoverco.com



The information contained herein has been obtained from reliable sources, but is not guaranteed. A prospective buyer/tenant should verify each item relating to this property and all information contained herein.

FOR LEASE

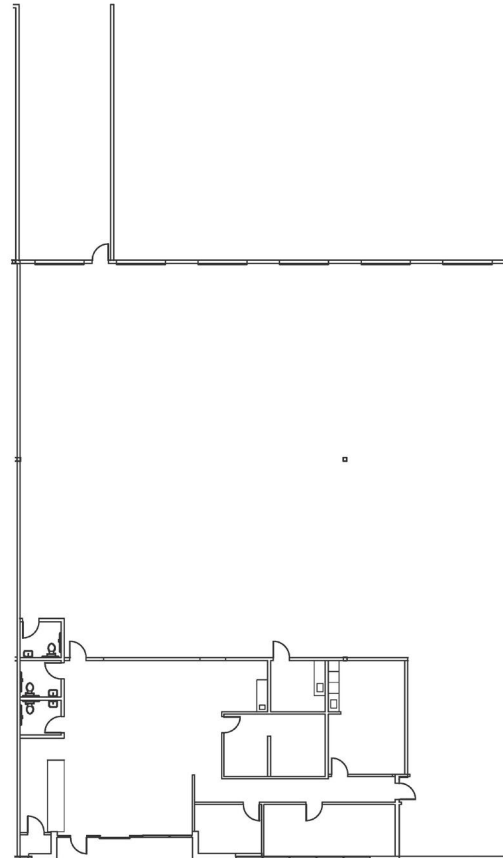
STE B103: 9,926 SF

WEST PARK CORPORATE CAMPUS

3500 W VALLEY HWY N | AUBURN, WA

HIGHLIGHTS

- 9,926 SF total
- 1,800 SF of office space
- 5 dock high doors, 1 grade level doors
- 3-phase power (Heavy)
- 30' clear height
- Excellent office layout
- Sprinklered
- Excellent Highway 167 frontage
- Class A image
- Excellent access and proximity to I-5, SR-18 and Hwy-167
- Built in 2000
- Available 2/1/25
- **Contact brokers for rates**



SHELL
9926 RSF
2090 SF (OFFICE) / 7236 SF (WH/S)

SUITE 3350-B103
WEST PARK 3320 BUILDING
3350 WEST VALLEY HIGHWAY
AUBURN, WASHINGTON



workplace architecture
the art of architecture for the modern workplace
3025 112th Ave. NE, Suite 110
Bellevue, Washington 98004
206.310.0827 T
www.workplacearchitecture.com

EXCLUSIVELY OFFERED BY:

Arne Svendsen
(206) 947-2885
asvendsen@andoverco.com

Brian Bruininks
(206) 856-6249
bbruininks@andoverco.com

West Park Corporate Campus is owned and operated by:



THE ANDOVER COMPANY, INC./CORFAC INTERNATIONAL
900 SW 16th St, Ste 100 | Renton, WA 98057 | (206) 244-0770 | www.andoverco.com



The information contained herein has been obtained from reliable sources, but is not guaranteed. A prospective buyer/tenant should verify each item relating to this property and all information contained herein.

FOR LEASE

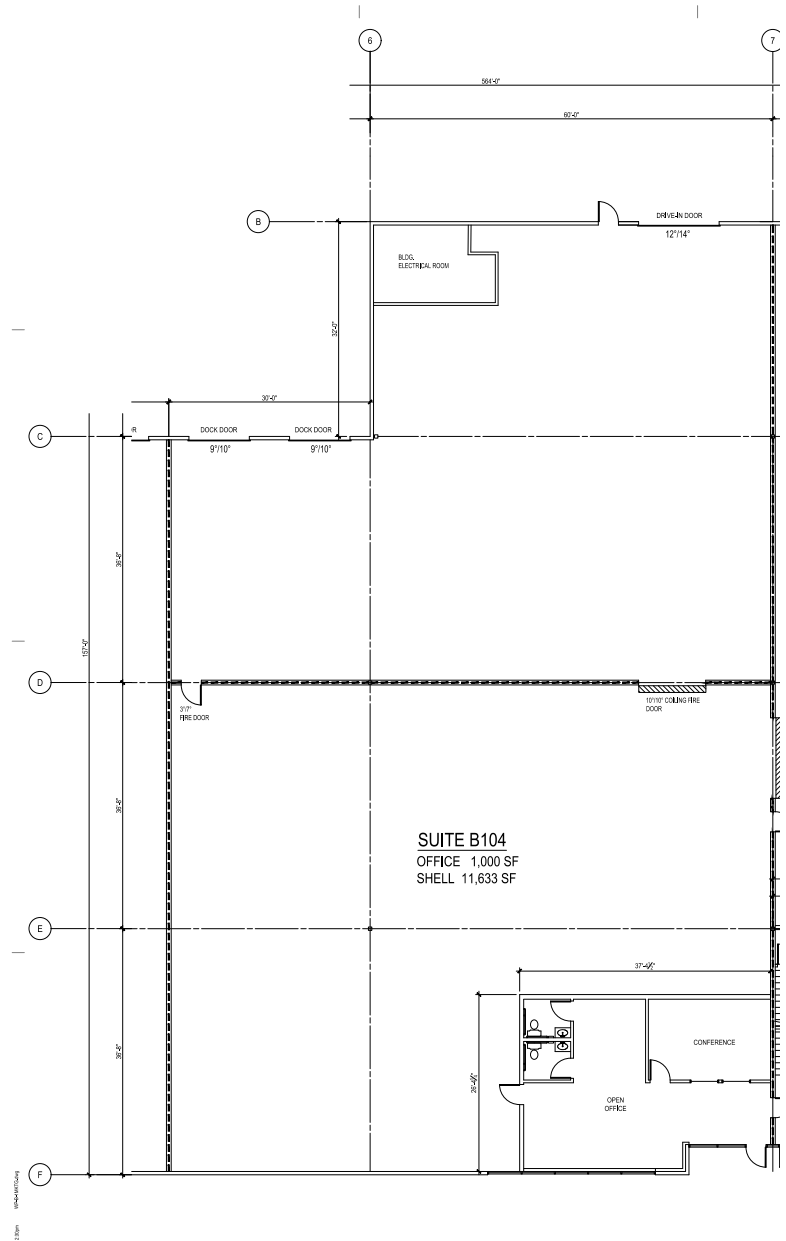
STE B104: 11,663 SF

WEST PARK CORPORATE CAMPUS

3500 W VALLEY HWY N | AUBURN, WA

HIGHLIGHTS

- 11,633 SF total
- Includes 1,000 SF office
- 2 dock high doors, 2 grade level door
- 3-phase power
- 30' clear height
- Excellent office layout
- Sprinklered
- Excellent Highway 167 frontage
- Class A image
- Excellent access and proximity to I-5, SR-18 and Hwy-167
- Built in 2000
- Available 2/1/25
- **Contact brokers for rates**



EXCLUSIVELY OFFERED BY:

Arne Svendsen
(206) 947-2885
asvendsen@andoverco.com

Brian Bruininks
(206) 856-6249
bbruininks@andoverco.com

West Park Corporate Campus is owned and operated



THE ANDOVER COMPANY, INC./CORFAC INTERNATIONAL
900 SW 16th St, Ste 100 | Renton, WA 98057 | (206) 244-0770 | www.andoverco.com



The information contained herein has been obtained from reliable sources, but is not guaranteed. A prospective buyer/tenant should verify each item relating to this property and all information contained herein.

FOR LEASE

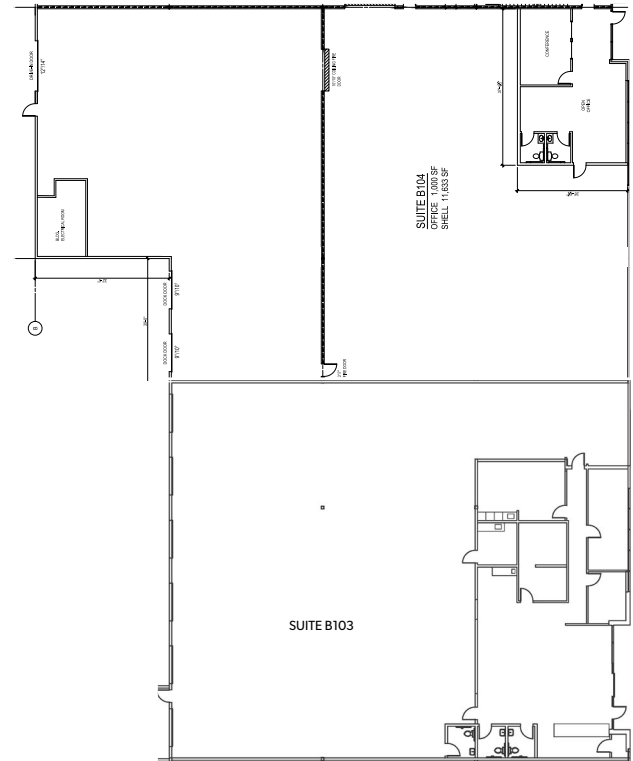
STE B104 & B103: 21,589 SF

WEST PARK CORPORATE CAMPUS

3500 W VALLEY HWY N | AUBURN, WA

HIGHLIGHTS

- 21,589 SF (Divisible to 11,663 SF & 9,926 SF)
- 2,800 total office SF (1,000 SF & 1,800 SF)
- 7 dock high doors, 3 grade level doors
- 3-phase power
- 30' clear height
- Excellent office layout
- Sprinklered
- Excellent highway 167 frontage
- Class A image
- Excellent access and proximity to I-5, SR-18 and Hwy-167
- Built in 2000
- Available 2/1/25
- **Contact brokers for rates**



EXCLUSIVELY OFFERED BY:

Arne Svendsen
(206) 947-2885
asvendsen@andoverco.com

Brian Bruininks
(206) 856-6249
bbruininks@andoverco.com

West Park Corporate Campus is owned and operated



THE ANDOVER COMPANY, INC./CORFAC INTERNATIONAL
900 SW 16th St, Ste 100 | Renton, WA 98057 | (206) 244-0770 | www.andoverco.com



The information contained herein has been obtained from reliable sources, but is not guaranteed. A prospective buyer/tenant should verify each item relating to this property and all information contained herein.