

VILLAGE GREEN WEST

Nº 245 W 14TH STREET

PRIME RETAIL

BETWEEN 7TH & 8TH AVENUES



AVAILABLE

GRD 3,964 SF

BSMT 354 SF

RENT

UPON REQUEST

POSSESSION

IMMEDIATE

FRONTAGE

38 FEET

CEILING HTS

12 FEET

CONTACT

MATTHEW NAMER
Matt@alfadm.com
646.246.8504

PENELOPE VOSS
Penelope@alfadm.com
212.206.7820

FEATURES NEW CONSTRUCTION ■ HIGH CEILINGS ■
ARCHITECTURAL DETAILS ■ STORAGE/OFFICE ■ VENTING
CONSIDERED

NEIGHBORS HSBC ■ TD BANK ■ BANK OF AMERICA ■
CHASE ■ BARNEYS NY ■ PAPER SOURCE ■ APPLE ■ SOREL

MASS TRANSIT: WALKING DISTANCE TO **LACE 123**

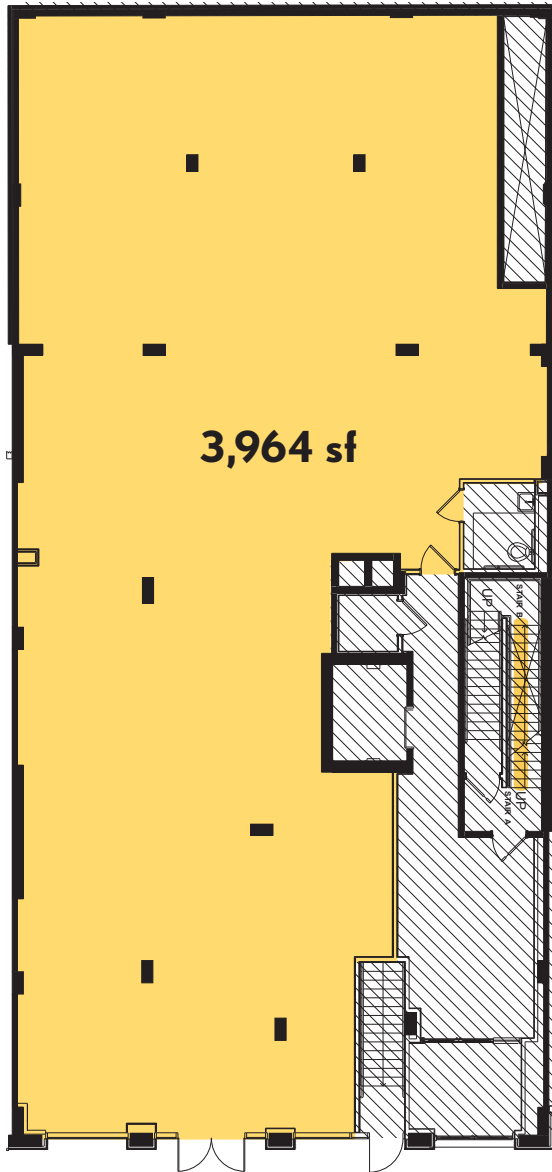
VILLAGE GREEN WEST

Nº 245 W 14TH STREET

PRIME RETAIL

BETWEEN 7TH & 8TH AVENUES

FLOOR PLANS

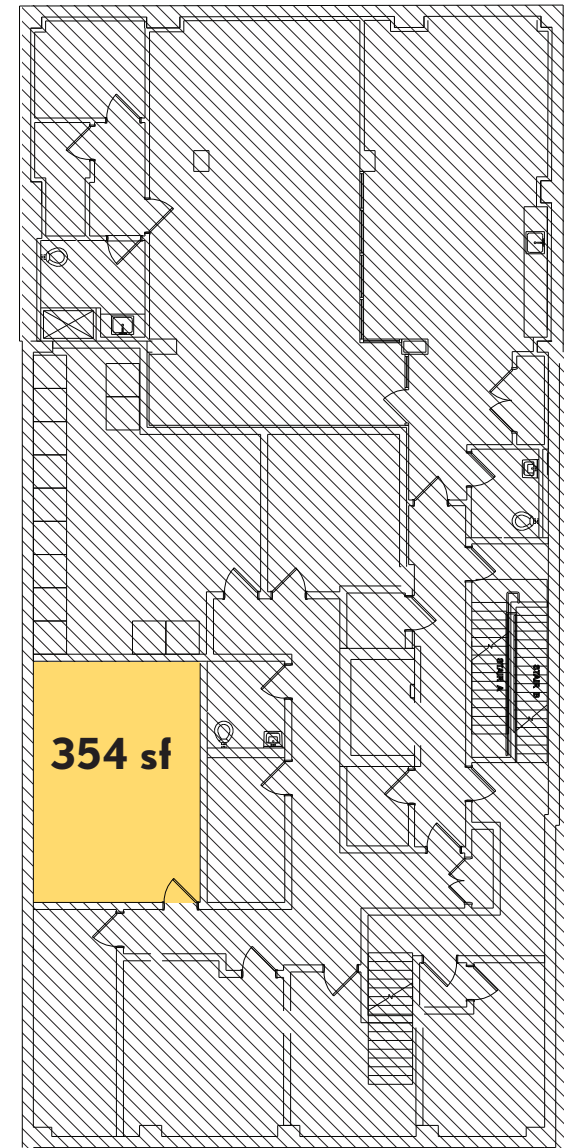


GROUND
FLOOR

3,964 sf

OPEN TO DIVISION OPTIONS -
REACH OUT WITH YOUR SQUARE
FOOTAGE REQ'S TO DISCUSS
POTENTIAL DIVISIONS AND PRICING

BASEMENT
STORAGE



354 sf

MATTHEW NAMER

Matt@alfadm.com

646.246.8504

PENELOPE VOSS

Penelope@alfadm.com

212.206.7820 x2