

OFFICE/ FLEX SPACE FOR LEASE

230 Long Hill Road, Shelton, CT

To arrange a tour contact:
David Fugitt | 203-226-7101 Ext 5
david@vidalwettenstein.com

Bruce Wettstein, SIOR
203-226-7101 | 203-226-7101 Ext 5
bruce@vidalwettenstein.com

VIDAL/WETTENSTEIN, LLC


SIOR Individual Members
Society of Industrial & Office Realtors



719 Post Road East, Westport, CT 06880
www.vidalwettenstein.com

All information from sources deemed reliable and is submitted subject to errors, omissions, change of price, rental, and property sale and withdrawal notice.

230 Long Hill Cross Road, Shelton, CT

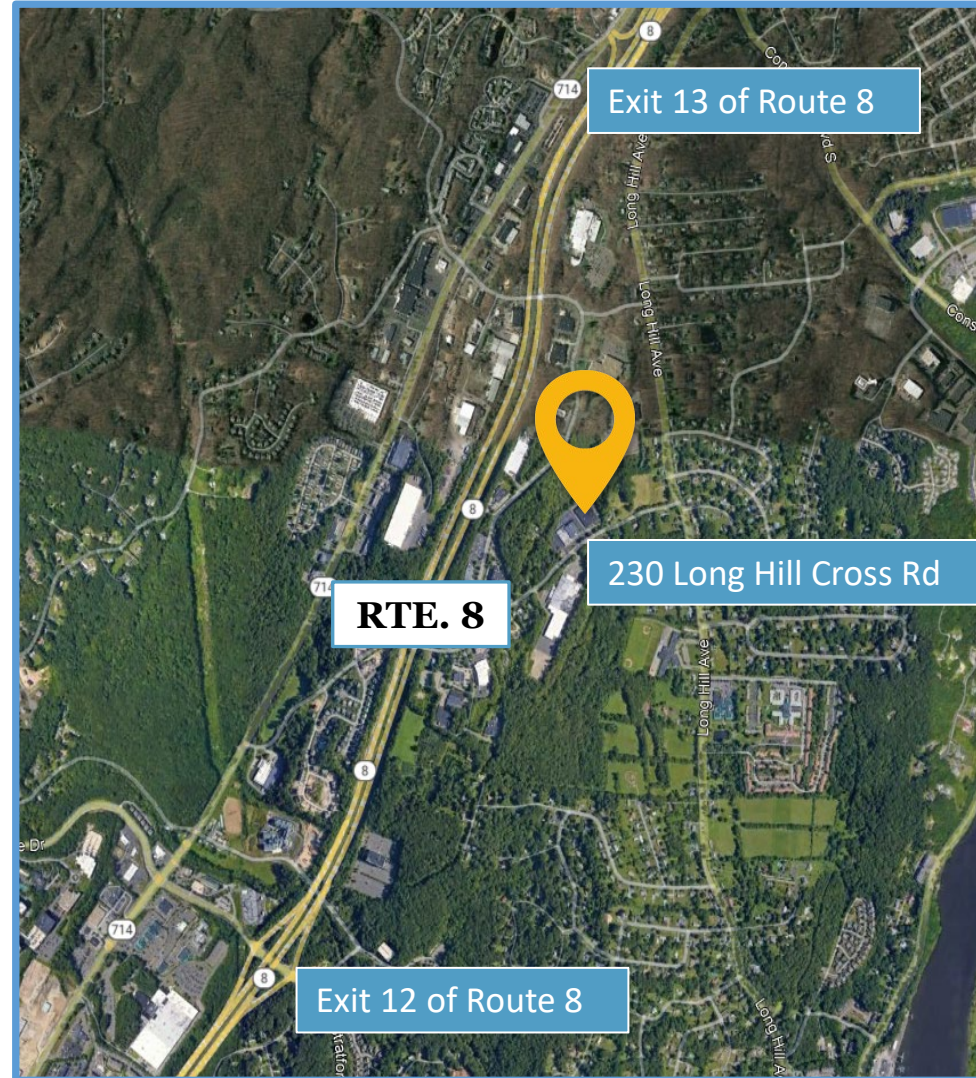
OFFICE SPACE FOR LEASE

7,546 Square Feet Available

- Building recently updated & improved
- Atrium lobby / elevator
- Flex and office space on first floor
- Loading docks with load leveler
- Close proximity to Exit 13 of Route 8 and Merritt Pkwy.
- Only .08 miles to Bridgeport Avenue, Spotted Horse, Starbucks, Griffin Hospital Medical Group, banking, among many others.
- Tremendous value
- Lease only \$10.00 NNN

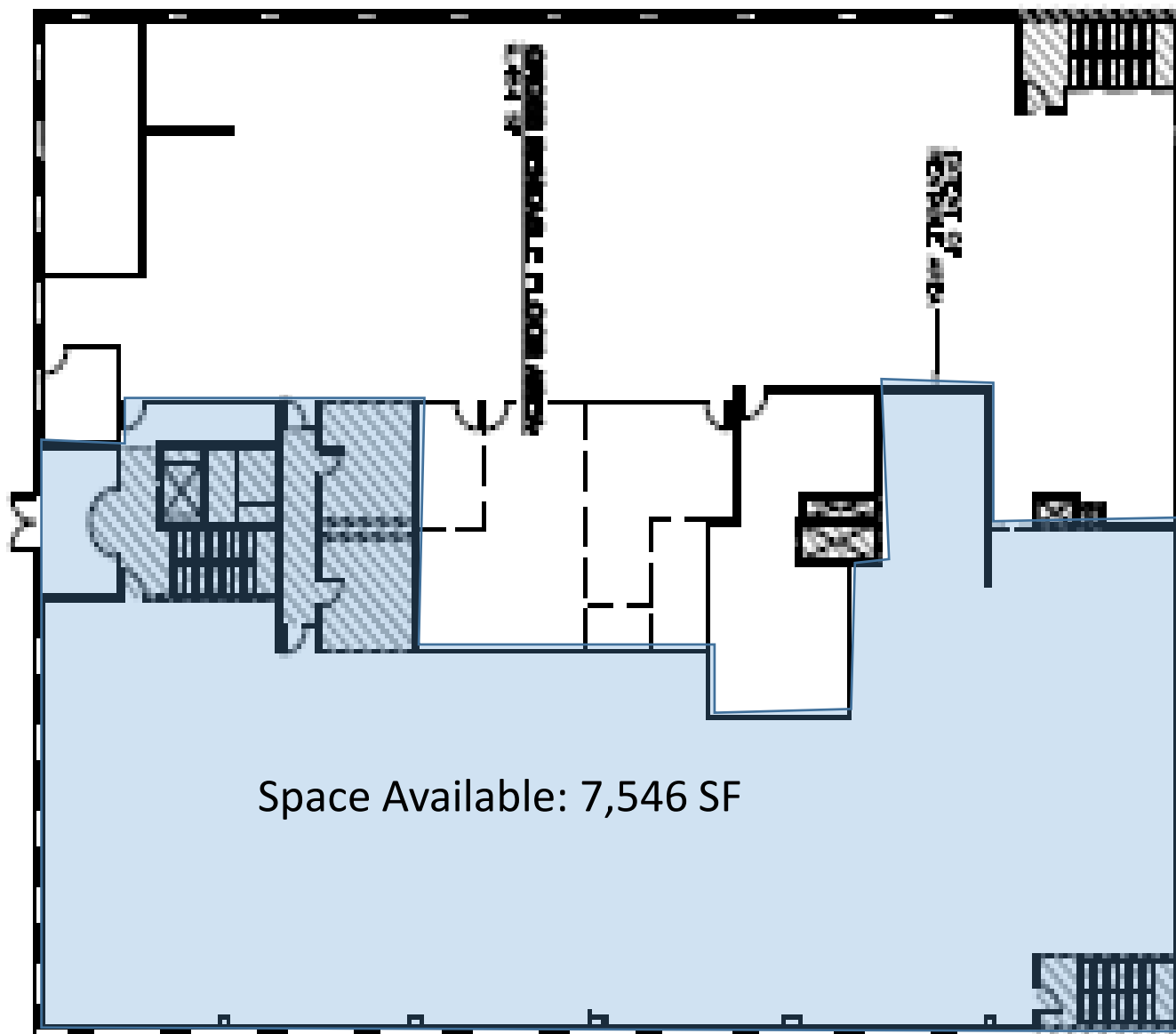


Location: Exit 12 & 13 of Route 8.



230 Long Hill Cross Road, Shelton, CT

Second Floor Office
Space Available
7,546 Square Feet



Space Available: 7,546 SF

Shelton, Connecticut

41,141

General

ACS, 2015–2019

	Shelton	State
Land Area <i>mi²</i>	31	4,842
Population Density <i>people per mi²</i>	1,343	738
Number of Households	16,185	1,370,746
Median Age	47.2	41.0
Median Household Income	\$97,131	\$78,444
Poverty Rate	5%	10%

Economy

Top Industries

CT Department of Labor, 2019

	Employment	Employers	Av. Wages
1 Manufacturing	4,781	66	\$102,550
2 Admin. & Support & Waste Mgmt	4,259	102	\$37,298
3 Health Care & Social Assistance	3,402	134	\$59,535
4 Profess., Sci., & Tech Services	2,302	195	\$86,651
5 Accommodation & Food Services	1,794	117	\$22,800
All Industries	25,873	1,387	\$73,663

SOTS Business Registrations

Secretary of the State, June 2021

Total Active Businesses 4,935

New Business Registrations by Year

2001	253	2006	308	2011	244	2016	324
2002	290	2007	299	2012	263	2017	286
2003	326	2008	279	2013	273	2018	354
2004	310	2009	243	2014	251	2019	341
2005	317	2010	224	2015	290	2020	349

Key Employers

Data from municipalities, 2021

- Nasdaq
- BIC Corp
- Prudential Financial
- Pitney Bowes Inc
- Hubbell Inc

Demographics

ACS, 2015–2019

Age Distribution

Age Group	Shelton	State
Under 10	3,684 (9%)	11%
10 to 19	4,334 (11%)	13%
20 to 29	4,552 (11%)	13%
30 to 39	4,018 (10%)	12%
40 to 49	5,778 (14%)	13%
50 to 59	6,888 (17%)	15%
60 to 69	6,193 (15%)	12%
70 to 79	3,131 (8%)	7%
80 and over	2,563 (6%)	5%

Race and Ethnicity

Race/Ethnicity	Shelton	State
Asian <i>Non-Hispanic (NH)</i>	4%	4%
Black <i>NH</i>	2%	10%
Hispanic or Latino/a <i>Of any race</i>	9%	16%
White <i>NH</i>	84%	67%
Other <i>NH, incl. American Indian, Alaska Native, Native Hawaiian or Pacific Islander</i>	1%	3%

Language Spoken at Home

Language	Shelton	State
English	78%	83%
Spanish	5%	12%

Educational Attainment

Education Level	Shelton	State
High School Diploma Only	26%	27%
Associate Degree	8%	8%
Bachelor's Degree	22%	23%
Master's Degree or Higher	17%	19%

Housing

ACS, 2015–2019

Metric	Shelton	State
Median Home Value	\$349,300	\$275,400
Median Rent	\$1,466	\$1,180
Housing Units	17,208	1,516,629

Housing Type	Shelton	State
Owner-Occupied	66%	81%
Detached or Semi-Detached	64%	78%
Vacant	6%	10%

Schools

CT Department of Education, 2020-21

School Districts

School District	Available Grades	Total Enrollment	Pre-K Enrollment	4-Year Grad Rate (2018-19)
Shelton School District	PK-12	4,405	75	90%
Statewide	-	513,079	15,300	88%

Smarter Balanced Assessments

Met or exceeded expectations, 2018/19

Subject	Shelton School District	Statewide
Math	62%	48%
ELA	71%	56%

Shelton, Connecticut

41,141

Labor Force

CT Department of Labor, 2020

	Shelton	State
Employed	19,774	1,724,621
Unemployed	1,680	148,010

Unemployment Rate	8 8%
Self-Employment Rate*	10 10%

*ACS, 2015-2019

Catchment Areas of 15mi, 30mi, and 60mi



Access

ACS, 2015-2019

	Shelton	State
Mean Commute Time <i>Pre-Covid</i>	28 min	26 min
No Access to a Car	5 9%	
No Internet Access	11 12%	

Commute Mode

Public Transport	3 5%
Walking or Cycling	0 3%
Driving	86 92%
Working From Home <i>Pre-Covid</i>	4 5%

Public Transit

CTtransit Service	-
Other Public Bus Operations	Valley Transit District
Train Service	Metro-North

Fiscal Indicators

CT Office of Policy and Management, SFY 2017-18

Municipal Revenue

Total Revenue	\$131,661,519
Property Tax Revenue	\$104,192,385
<i>per capita</i>	\$2,520
<i>per capita, as % of state av.</i>	83%
Intergovernmental Revenue	\$22,554,843
Revenue to Expenditure Ratio	99%

Boston*

Municipal Expenditure

Total Expenditure	\$133,090,116
Educational	\$86,427,398
Other	\$46,662,718

Grand List

Equalized Net Grand List	\$6,645,615,451
<i>per capita</i>	\$161,706
<i>per capita, as % of state av.</i>	105%
Comm./Indust. Share of Net Grand List	19%

Actual Mill Rate	22.21
Equalized Mill Rate	15.58

Municipal Debt

Moody's Rating	A1
Total Indebtness	\$32,714,000
<i>per capita</i>	\$796
<i>per capita, as % of state av.</i>	31%
<i>as percent of expenditures</i>	25%

Annual Debt Service	\$10,302,897
<i>as % of expenditures</i>	8%



Search AdvanceCT's **SiteFinder**, Connecticut's most comprehensive online database of available commercial properties.
ctdata.org/sitefinder

About Town Profiles

The Connecticut Town Profiles are two-page reports of demographic and economic information for each of Connecticut's 169 municipalities. Reports for 2016-2019 are available from profiles.ctdata.org.

Feedback is welcome, and should be directed to info@ctdata.org.

These Profiles can be used free of charge by external organizations, as long as *AdvanceCT* and *CTData Collaborative* are cited. No representation or warranties, expressed or implied, are given regarding the accuracy of this information.