

FOR LEASE



KEY PLAZA - BANGOR, ME

PROPERTY DESCRIPTION

Class A, four-story office building located in the heart of Bangor's downtown business district, offering flexible office space with generous on-site parking. The building features a glass lobby atrium and the suites offer panoramic views of the Kenduskeag Steam, Penobscot River, and Bangor's Waterfront District.

SPACE AVAILABLE 2nd Floor: 998 +/- sf (Available July 1, 2026)
2nd Floor: 1,273 +/- sf (Available July 1, 2026)
4th Floor: 1,873 +/- sf (Available September 1, 2026)

EXISTING TENANTS Major tenants include: Key Bank, Berry Dunn, Gross, Minsky & Mogul, Vafiades, Brountas & Kominsky, Pine Tree Wealth Management, Liberty Mutual and Morgan Stanley

PARKING 130 designated parking spaces on-site.
Additional parking available for rent in adjacent lot.

Information furnished is from sources deemed reliable, but no warranty is made to the accuracy thereof. The listing broker hereby discloses that she/he is acting solely as an agent for the seller in the marketing, negotiation, and sale/lease of this property. Broker further discloses that she/he represents the seller's interest and has a fiduciary duty to disclose to the seller information which is material to the sale acquired from the buyer or any other source.



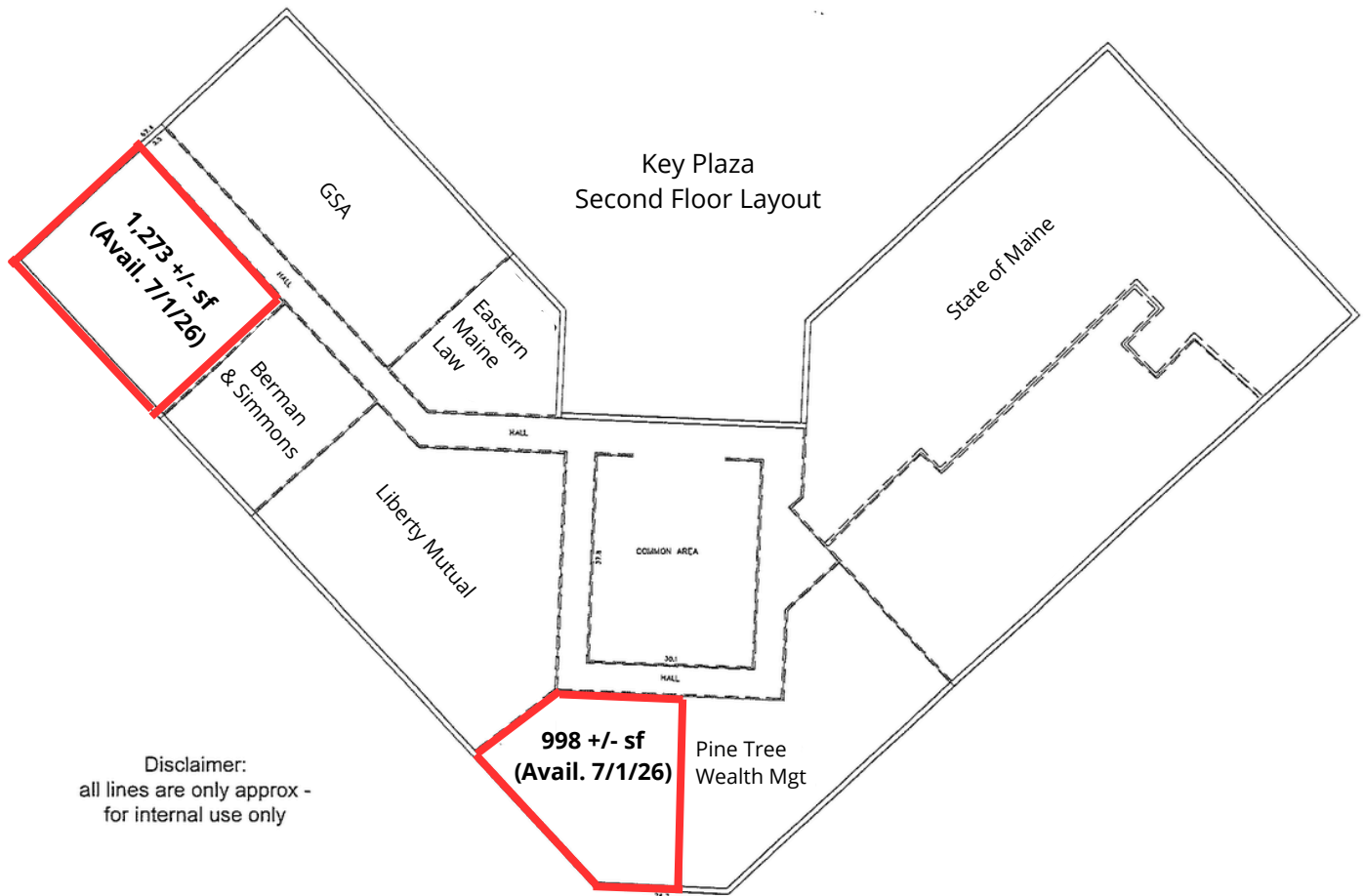
LANDLORD BUILDOUT

High quality, Class A finishes include solid core oak doors & trim, LED lighting, high quality carpet and state of the art HVAC system.

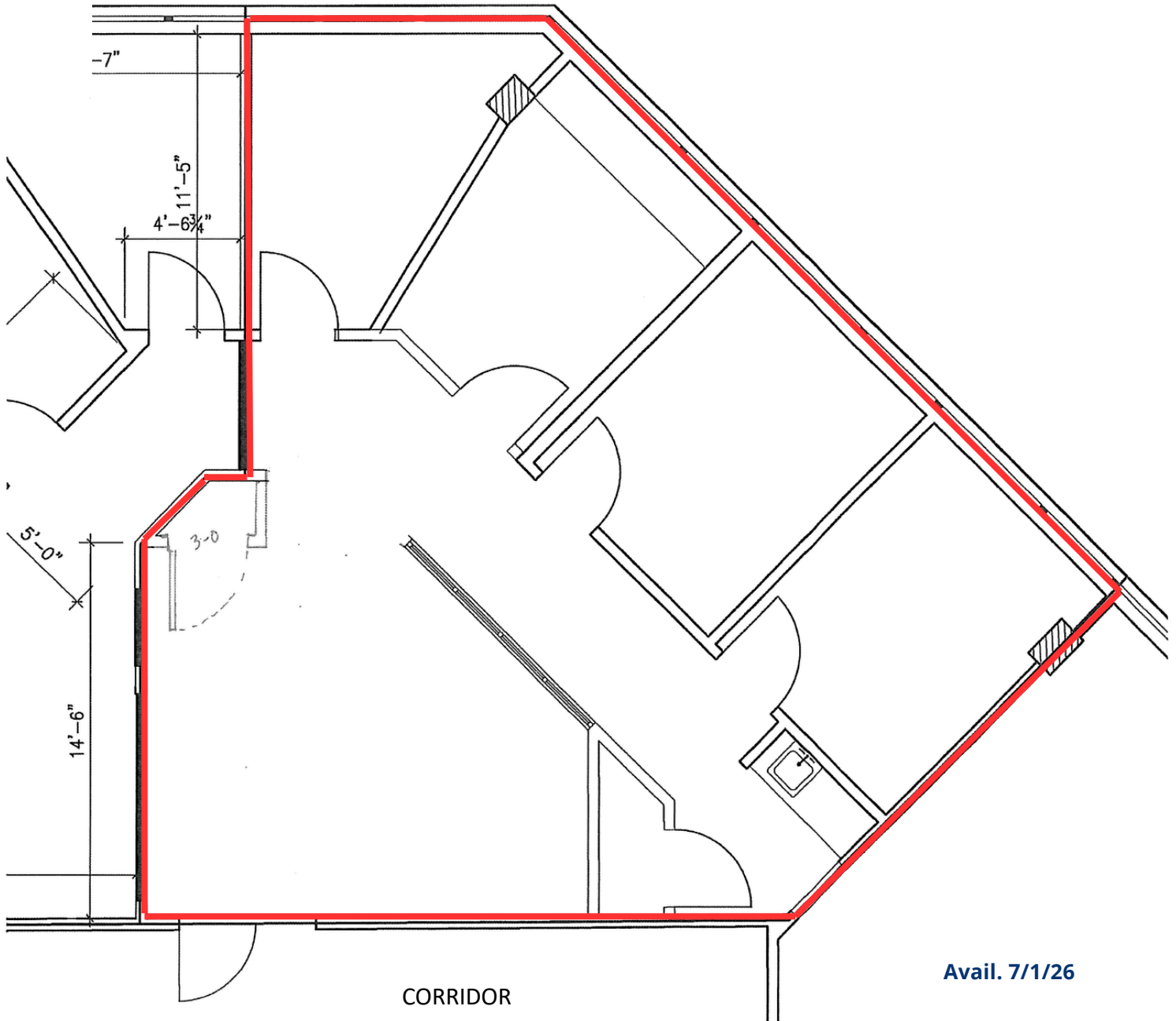
ZONING

Downtown Development District (DDD)

2ND FLOOR - FLOOR PLAN



2ND FLOOR - 998 +/- SF SPACE LAYOUT



CORRIDOR

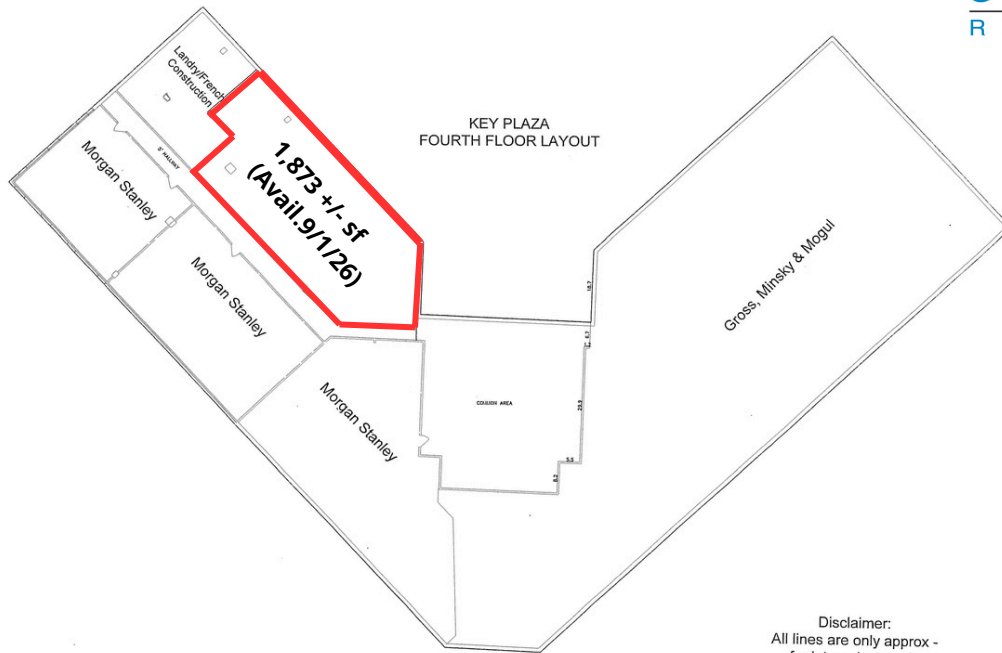
Avail. 7/1/26

2ND FLOOR - 1,273 +/- SF SPACE LAYOUT



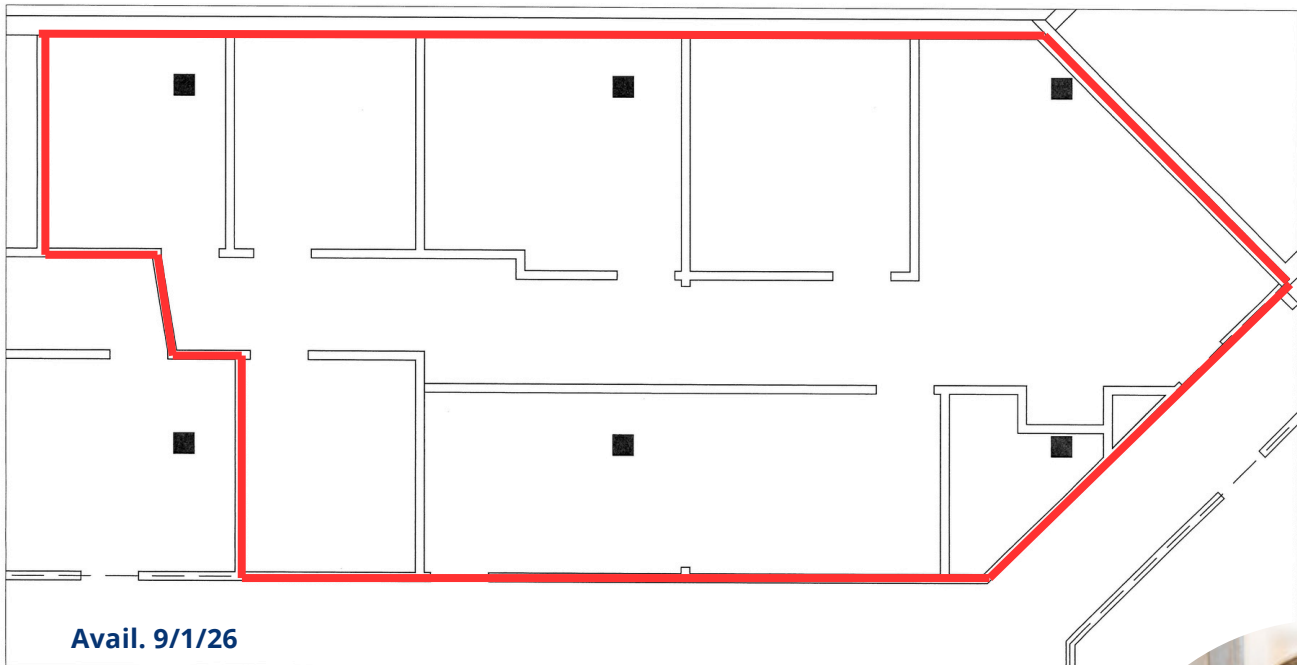
Avail. 7/1/26

4TH FLOOR - FLOOR PLAN



Disclaimer:
All lines are only approx -
for internal use only

4TH FLOOR - 1,873 +/- SF SPACE LAYOUT



FOR FURTHER INFO, CONTACT: MOLLY BRIGGS

 molly@epsteincommercial.com

 epsteincommercial.com

 207-945-6222

