



RETAIL SPACE

NORTH BABYLON, NY

LA GRANDE PLACE SHOPPING CENTER

1350 DEER PARK AVENUE

SIZE

800 SF up to 4,200 SF

ASKING RENT

Upon Request

CO-TENANTS

Fresenius Kidney Care, Quest Diagnostics, Allergy & Immunology, Bethpage Federal Credit Union, Towers Flowers, Fitzgerald Driving School, Paul Della Insurance, Bakery, Island Jerk Restaurant, Top China Restaurant, South Asian Market

NEIGHBORS

StateFarm, TD Bank, AutoZone, Burger King, Ralph's Italian Ices, CVS, TrueValue, Benjamin Moore, Speedway, Planet Fitness

COMMENTS

Dedicated parking lot with 200+/- spaces

Traffic count of 44,702 vehicles per day on Deer Park Avenue

Easy access into the center on Deer Park Avenue and Garnet Street

CONTACT EXCLUSIVE AGENTS

JOANNE ARGENTI

jargenti@ripcony.com

516.933.8880

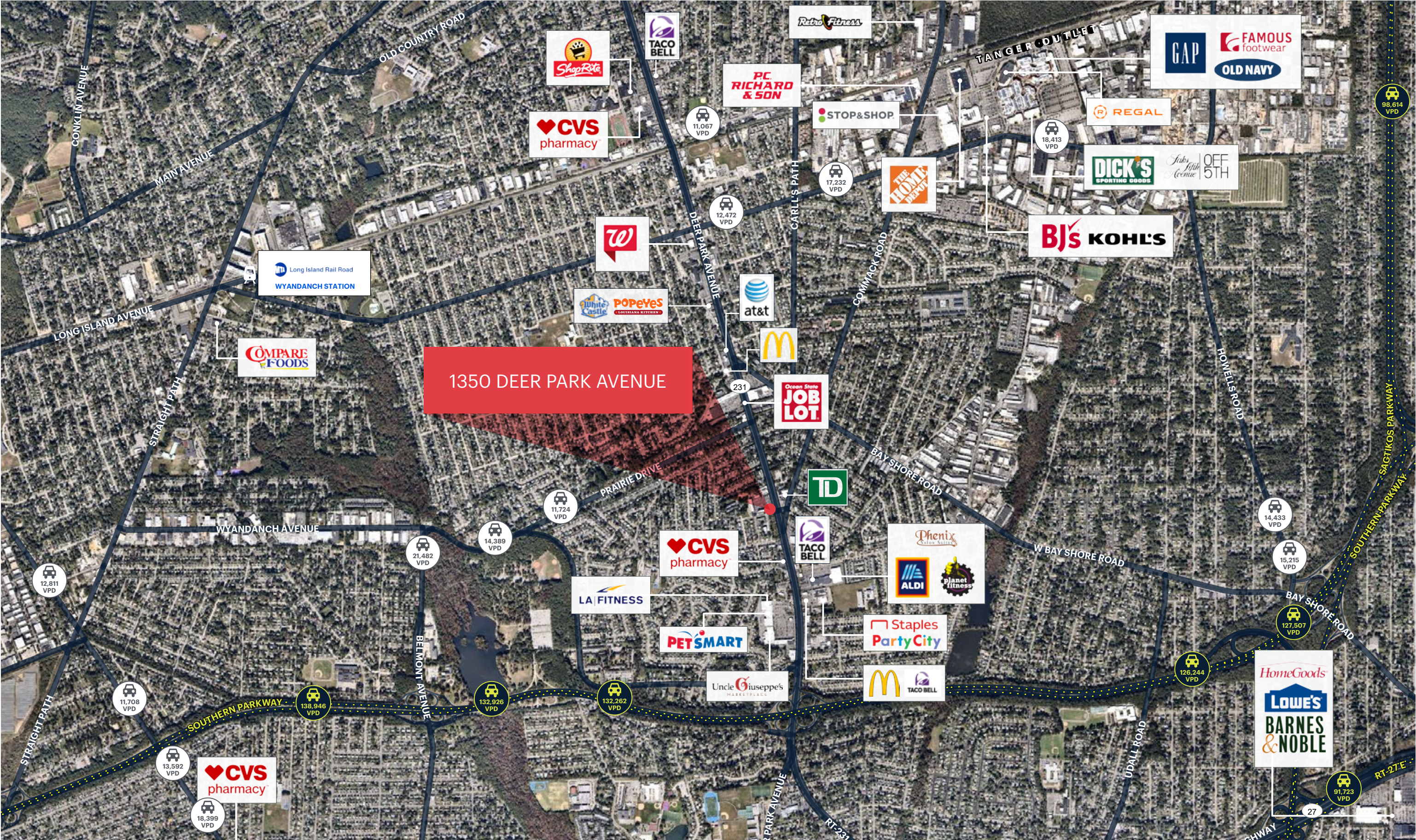
RIPCO
REAL ESTATE

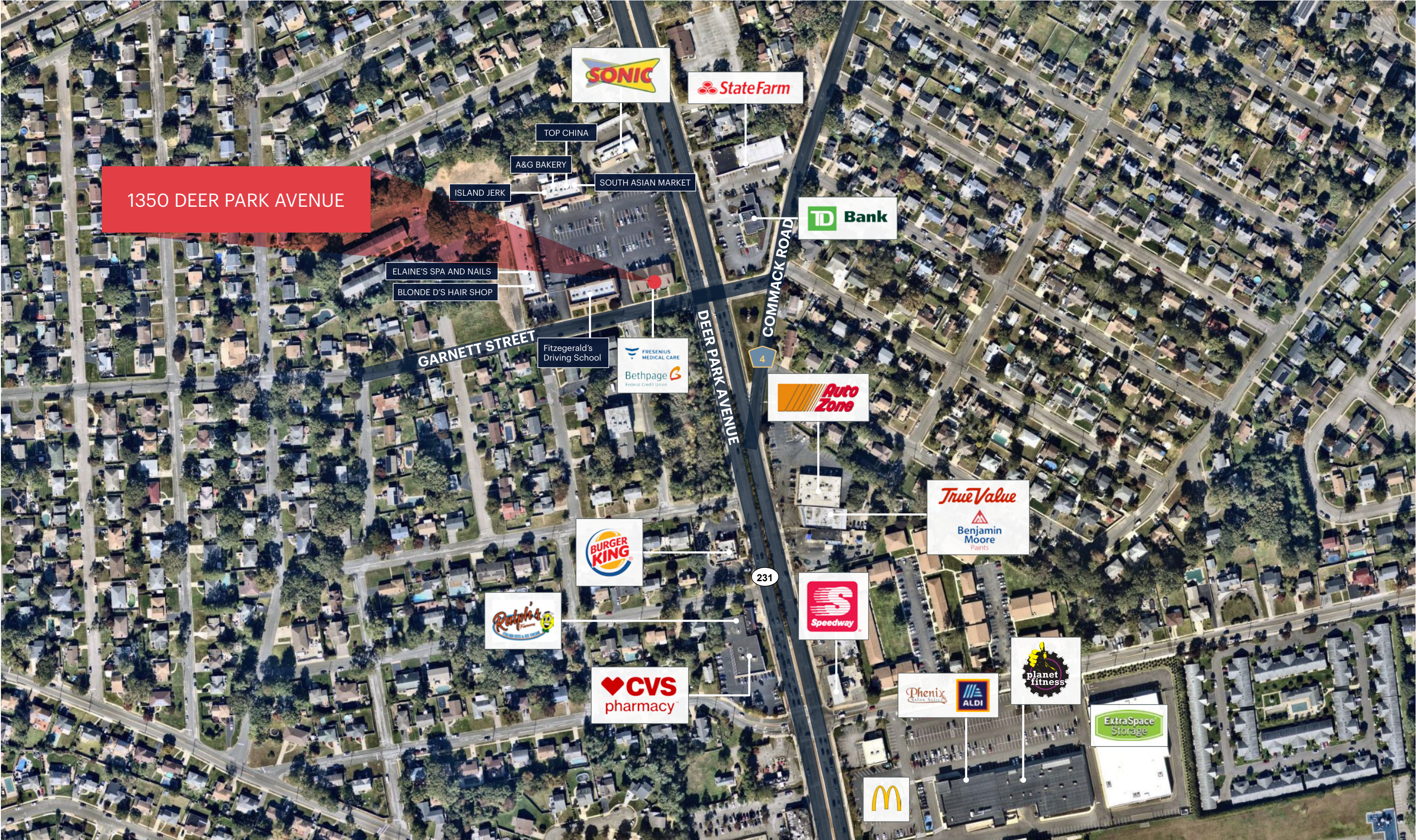
1000 Woodbury Road
Suite 100
Woodbury, NY 11797
516.933.8880

Please visit us at [ripcony.com](https://www.ripcony.com) for more information

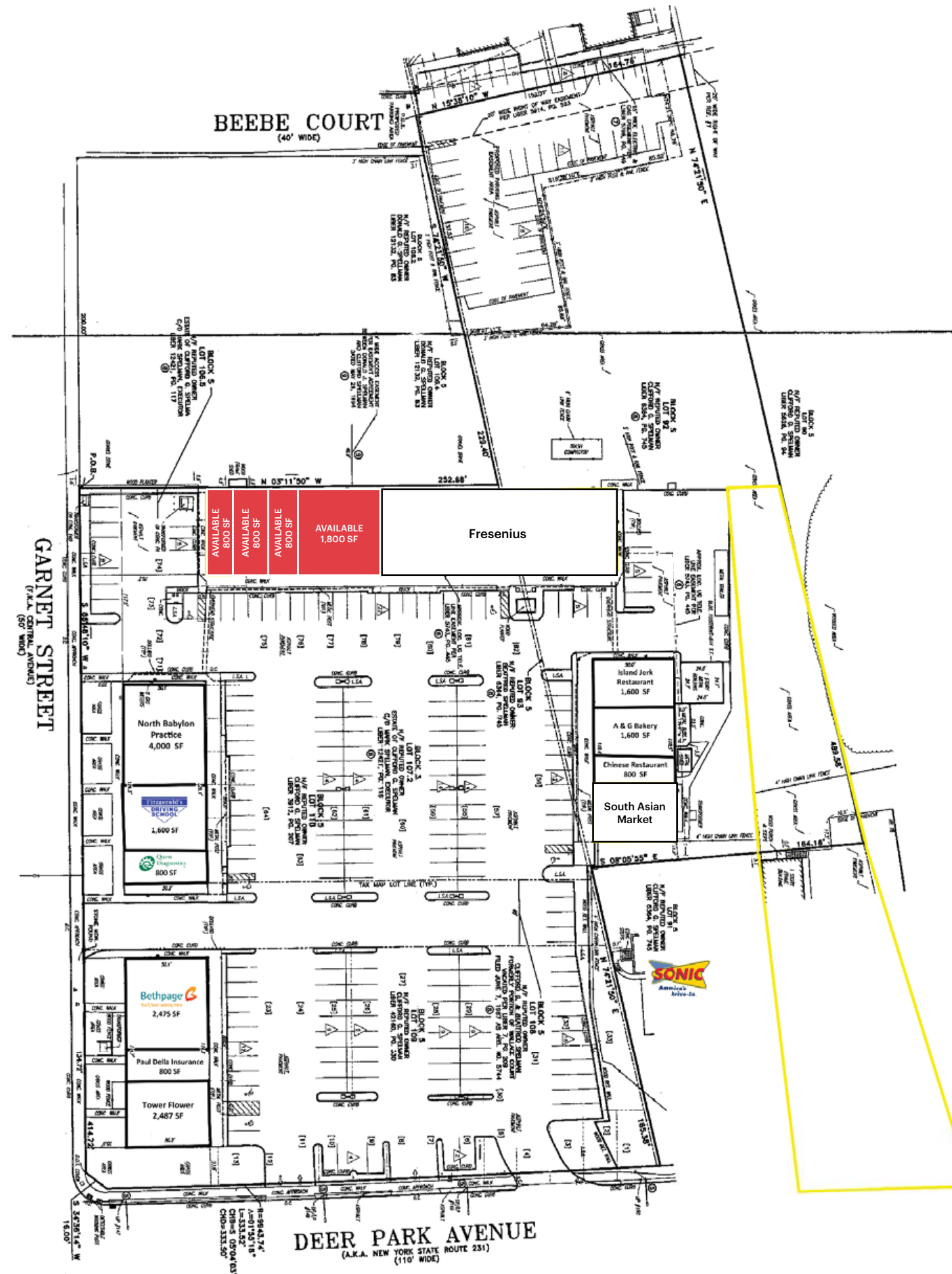
This information has been secured from sources we believe to be reliable, but we make no representations as to the accuracy of the information. References to square footage are approximate. Buyer must verify the information and bears all risk for any inaccuracies.

MARKET AERIAL

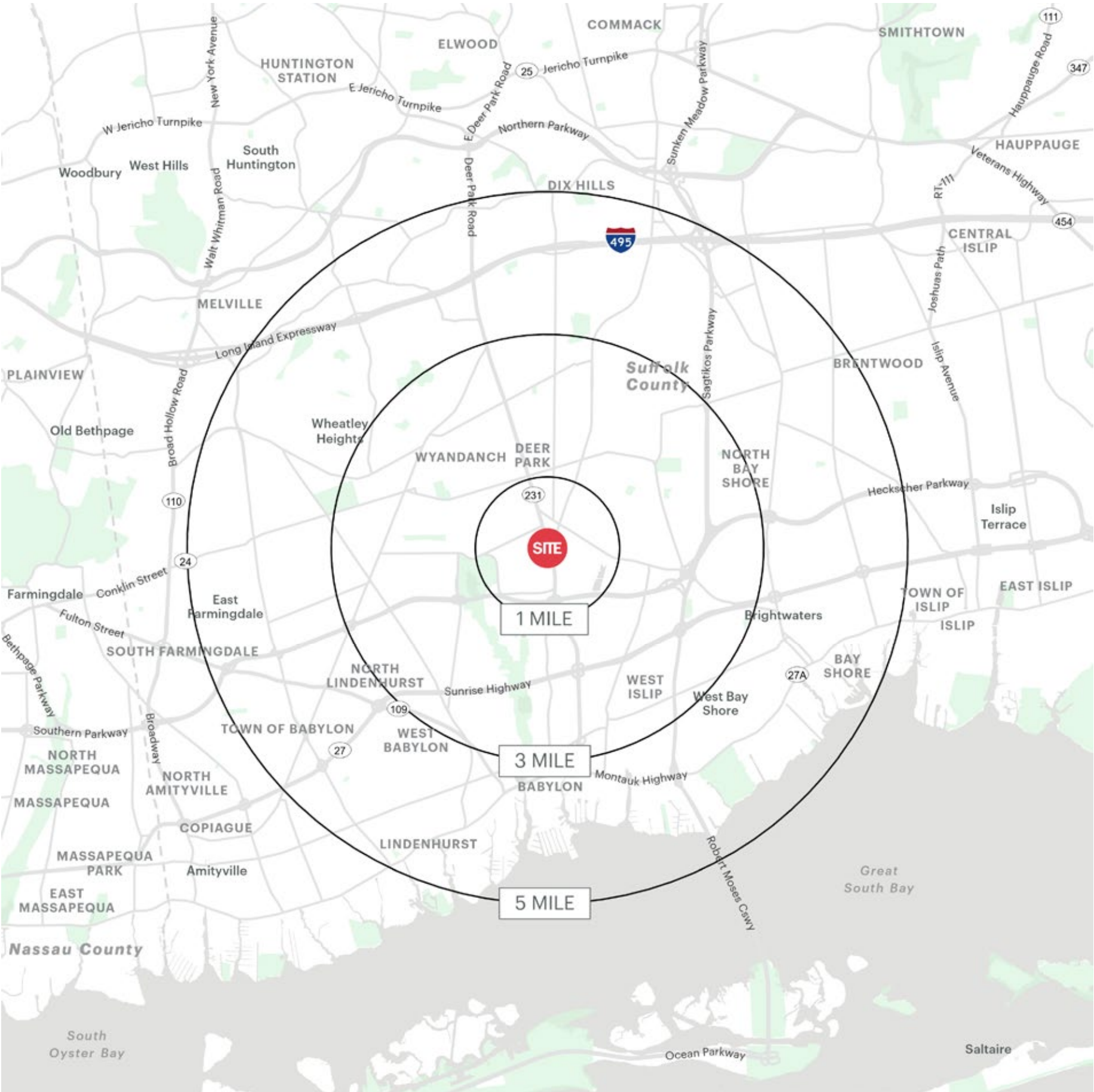




SITE PLAN



AREA DEMOGRAPHICS



1350 DEER PARK AVENUE NORTH BABYLON, NY

1 MILE RADIUS

| | |
|---------------------------------|---|
| POPULATION | COLLEGE GRADUATES (BACHELOR'S +) |
| 18,800 | 3,982- 30% |
| HOUSEHOLDS | TOTAL BUSINESSES |
| 6,296 | 701 |
| AVERAGE HOUSEHOLD INCOME | TOTAL EMPLOYEES |
| \$124,010 | 6,014 |
| MEDIAN HOUSEHOLD INCOME | DAYTIME POPULATION (W/ 16 YR +) |
| \$102,943 | 15,163 |

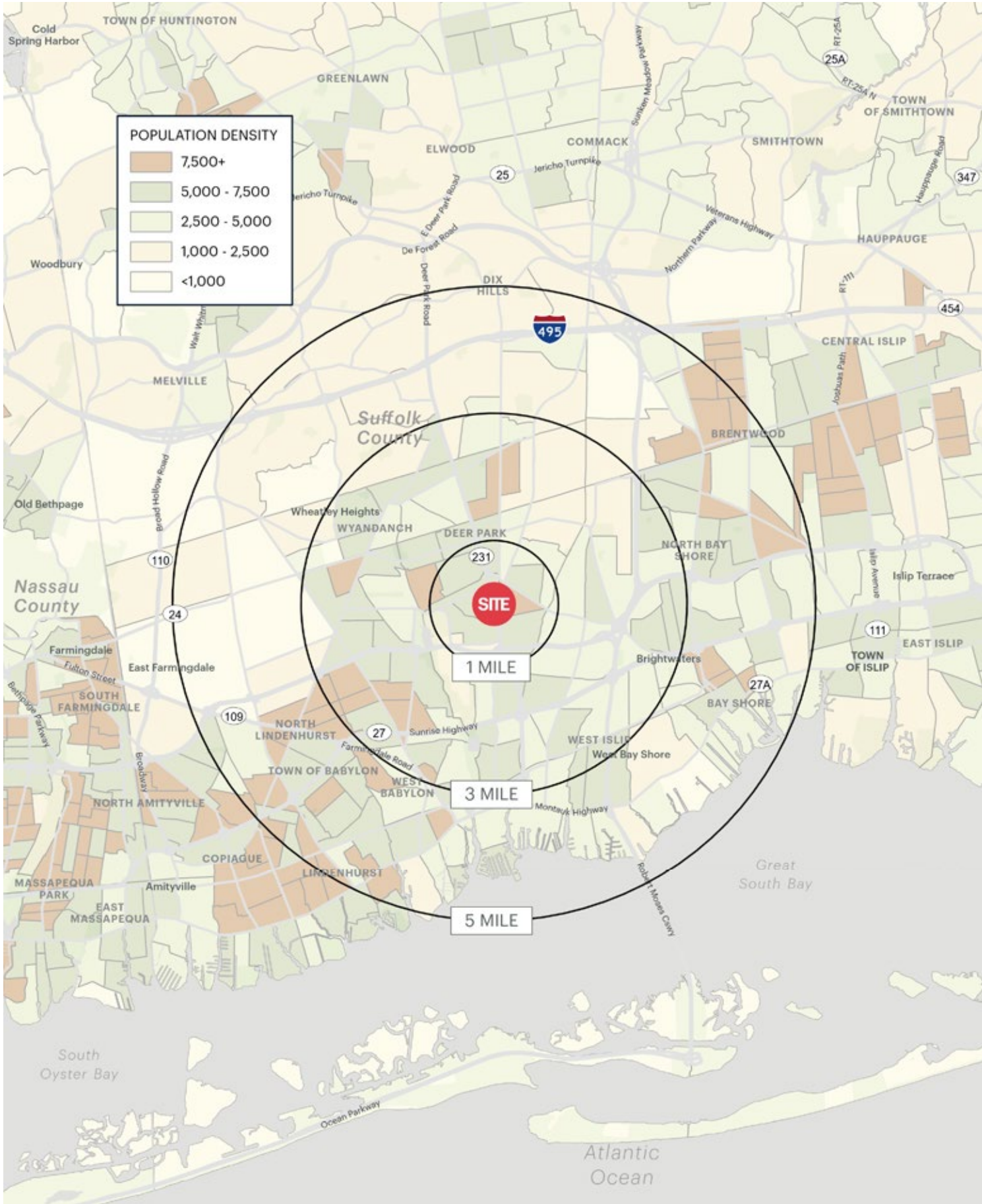
3 MILE RADIUS

| | |
|---------------------------------|---|
| POPULATION | COLLEGE GRADUATES (BACHELOR'S +) |
| 131,572 | 29,664 - 32% |
| HOUSEHOLDS | TOTAL BUSINESSES |
| 42,584 | 4,568 |
| AVERAGE HOUSEHOLD INCOME | TOTAL EMPLOYEES |
| \$130,112 | 47,837 |
| MEDIAN HOUSEHOLD INCOME | DAYTIME POPULATION (W/ 16 YR +) |
| \$105,698 | 112,024 |

5 MILE RADIUS

| | |
|---------------------------------|---|
| POPULATION | COLLEGE GRADUATES (BACHELOR'S +) |
| 282,817 | 66,348 - 34% |
| HOUSEHOLDS | TOTAL BUSINESSES |
| 89,141 | 10,404 |
| AVERAGE HOUSEHOLD INCOME | TOTAL EMPLOYEES |
| \$136,091 | 121,871 |
| MEDIAN HOUSEHOLD INCOME | DAYTIME POPULATION (W/ 16 YR +) |
| \$106,124 | 259,005 |

AREA DEMOGRAPHICS



1350 DEER PARK AVENUE NORTH BABYLON, NY



ripcony.com