

FOR SALE/DESIGN-BUILD

Light Industrial ±5 Acre Parcels

BIGHORN INDUSTRIAL PARK

PLEASANTVIEW RD, POST FALLS, ID



HIGHLIGHTS

- Phase 3 Now Available
- Parcel Sizes ± 5 Acres
- Priced at \$675,000
- Design-build

7FOLD
REALTY
ADVISORS

Donnie Murrell
208-758-7539
donnie@7foldrealty.com

BERKSHIRE
HATHAWAY | JACKLIN
REAL ESTATE

PROPERTY OVERVIEW

PROPERTY HIGHLIGHTS

- Located in Post Falls – one of Idaho’s fastest-growing cities, with 18.6% population growth since 2020 and ranked 70th nationally
- Situated within the 200-acre master-planned Bighorn Industrial Park near Poleline Ave and Pleasant View Rd in West Post Falls
- Design-build options available for custom office/warehouse space tailored to specific business operations
- Zoned for industrial development – ideal for manufacturing, logistics, and warehouse use
- Lots are fully improved with 3-phase power and natural gas from Avista Utilities, high-speed internet, and a private water system that meets domestic and fire-flow standards (IFC Table B105.1)
- Each site is approved for septic discharge up to 91,250 gallons per year (IDAPA 58.01.023).
- Strong regional connectivity with close access to I-90, Hwy 53, Hwy 41 and US-95 – ideal for logistics and distribution
- Business-friendly regulatory environment with responsive city and state agencies supporting development
- CdAEDC and City of Post Falls assist with site selection, permitting, and introductions to key economic development contacts
- Idaho offers low operating costs and incentives, including a 3% investment tax credit and personal property tax exemptions.
- Access to skilled labor through nearby colleges and workforce training from the Idaho Department of Labor
- Thriving business climate with companies reporting strong growth, ease of operations, and a high quality of life in North Idaho

PROPERTY INFORMATION

- Parcels – 11 each ± 5 Acres
- Zoning – Light Industrial in Kootenai County
- Water – Domestic & Fire Flow from Pleasant View Water District
- Utilities – Gas, Electric, Septic System, Fiber & Telephone
- Protected Investment with CCR’s
- [Link to City of Kootenai County Zoning Information](#)

PRICING

LOT #	NET ACRES	PRICE
Block 1		
Lot 4	4.79	\$ 675,000
Lot 5 & 6	33.98	CALL
Block 4		
Lot 4	4.78	\$ 675,000
Block 5		
Lot 1	4.60	\$ 675,000
Lot 3	4.59	\$ 675,000
Lot 4	4.59	SOLD
Lot 5	4.59	\$ 675,000
Lot 6	4.50	\$ 675,000
Block 6		
Lot 1	4.50	\$ 675,000
Lot 2	4.50	\$ 675,000
Block 7		
Lot 1	4.50	\$ 675,000
Lot 2	4.50	\$ 675,000

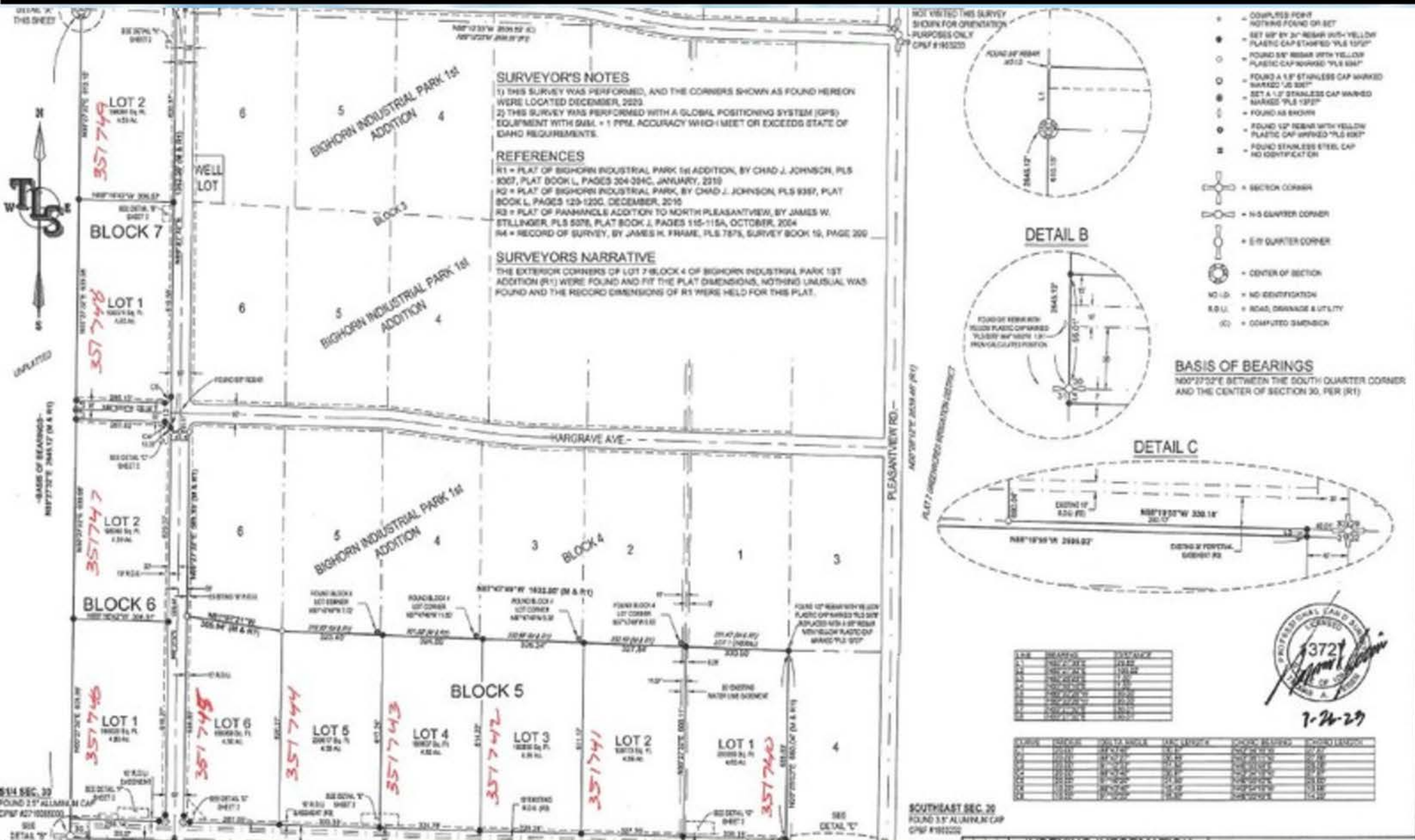


NEARBY BUSINESSES

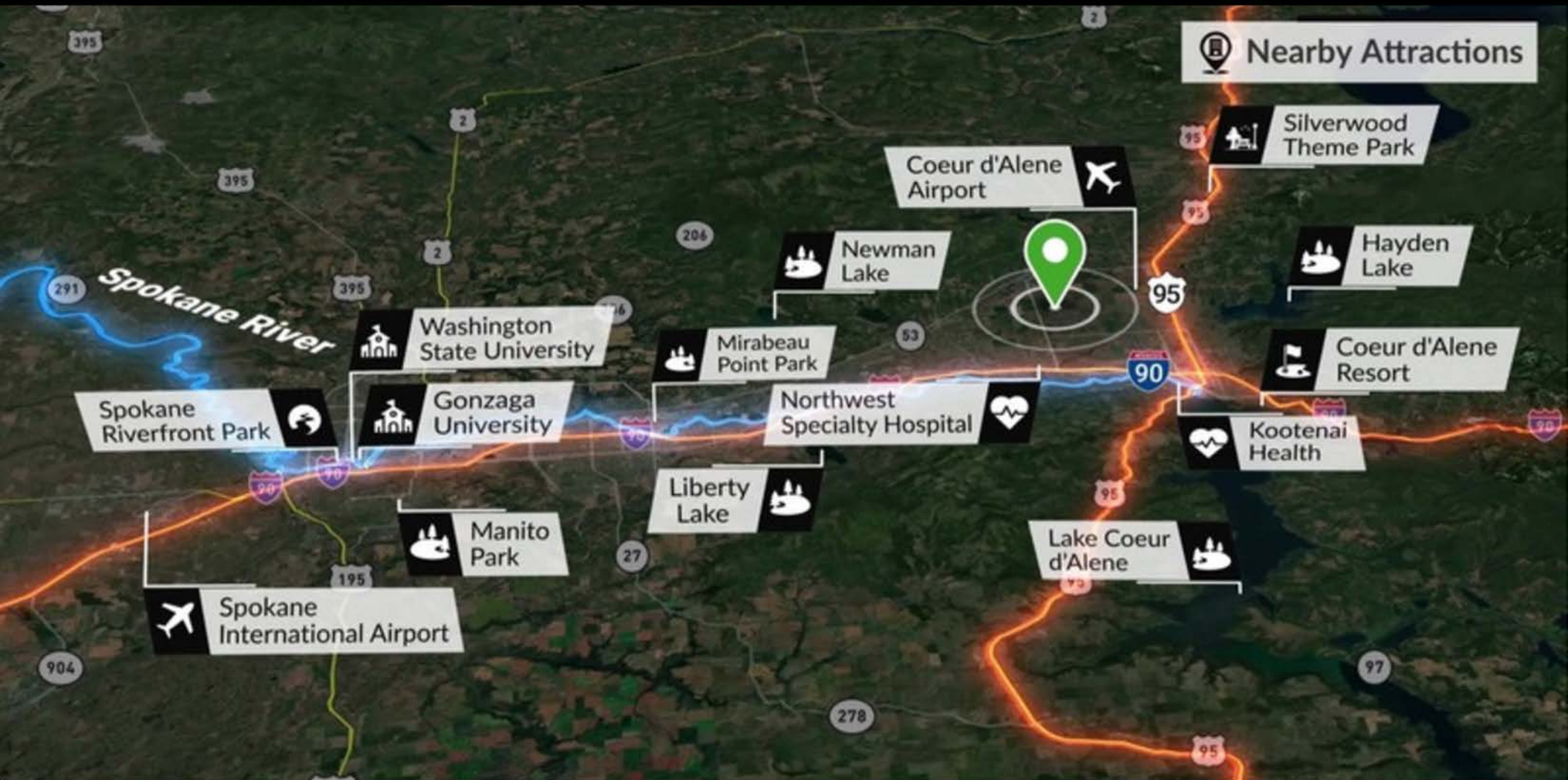


SITE PICTURES





INLAND NORTHWEST



Donnie Murrell

208-758-7539

donnie@7foldrealty.com

BERKSHIRE HATHAWAY | JACKLIN REAL ESTATE

1927 W Riverstone Dr.
Coeur d' Alene, ID 83814

© 2024 Berkshire Hathaway Jacklin Real Estate. All rights reserved. This information has been obtained from sources believed reliable, but has not been verified for accuracy or completeness. You should conduct a careful, independent investigation of the property and verify all information. Any reliance on this information is solely at your own risk. Berkshire Hathaway Jacklin Real Estate and the BHJRE logo are service marks of Berkshire Hathaway Jacklin Real Estate. All other marks displayed on this document are the property of their respective owners, and the use of such logos does not imply any affiliation with or endorsement of Berkshire Hathaway Jacklin Real Estate. Photos herein are the property of their respective owners. Use of these images without the express written consent of the owner is prohibited. Licensed Real Estate Agent in the State of Idaho.