

# GREENWOOD MANOR

254 3<sup>RD</sup> STREET WEST  
NORTH VANCOUVER, BC

## Chris Hayne

Associate Vice President  
Multifamily Investment Specialist

O: 604 493 3002 x708

C: 778 998 4663

E: [chris.hayne@rlpcommercial.com](mailto:chris.hayne@rlpcommercial.com)

## Billy Yang

Senior Associate  
Commercial Land & Development

O: 604 493 3002 x6

C: 778 899 0528

E: [billyyang@rlpcommercial.com](mailto:billyyang@rlpcommercial.com)



Royal LePage Sussex | 2397 Marine Drive | West Vancouver

BC Canada | V7V 1K9 | P 604 493 3002

[www.rlpcommercialvancouver.com](http://www.rlpcommercialvancouver.com)

\*Personal Real Estate Corporation



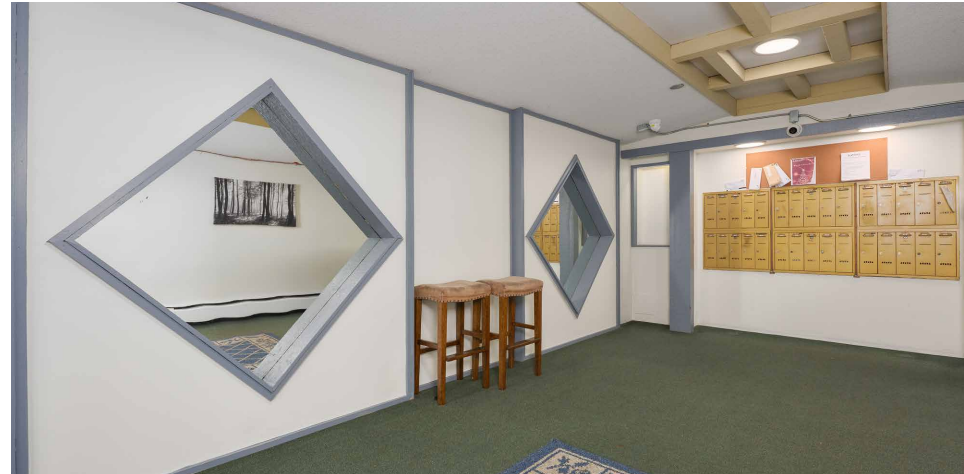
# 254 | 3<sup>RD</sup> STREET WEST NORTH VANCOUVER, BC

## OPPORTUNITY

Welcome to Greenwood Manor. Nestled in the heart of Lower Lonsdale, this well-maintained 30-unit apartment building represents a rare investment opportunity in one of North Vancouver's most desirable rental markets. Built in 1973, the property sits proudly on a 17,988 square foot lot and offers a balanced mix of well-appointed suites, each with its own private balcony or patio. Residents enjoy the convenience of secure ground-level parking for 30 vehicles, plus 4 additional visitor stalls, 30 full-size storage lockers, a laundry room and ample in-suite storage; welcomed additions in a building of this vintage. With excellent access to nearby shops, restaurants, and the Seabus, this asset offers consistent tenant demand and solid income stability. The property's underlying redevelopment potential; supported by its location within a rapidly evolving multifamily corridor, positions it as an ideal long-term hold with significant upside for investors or developers looking to capitalize on the continued growth of the North Shore rental market.

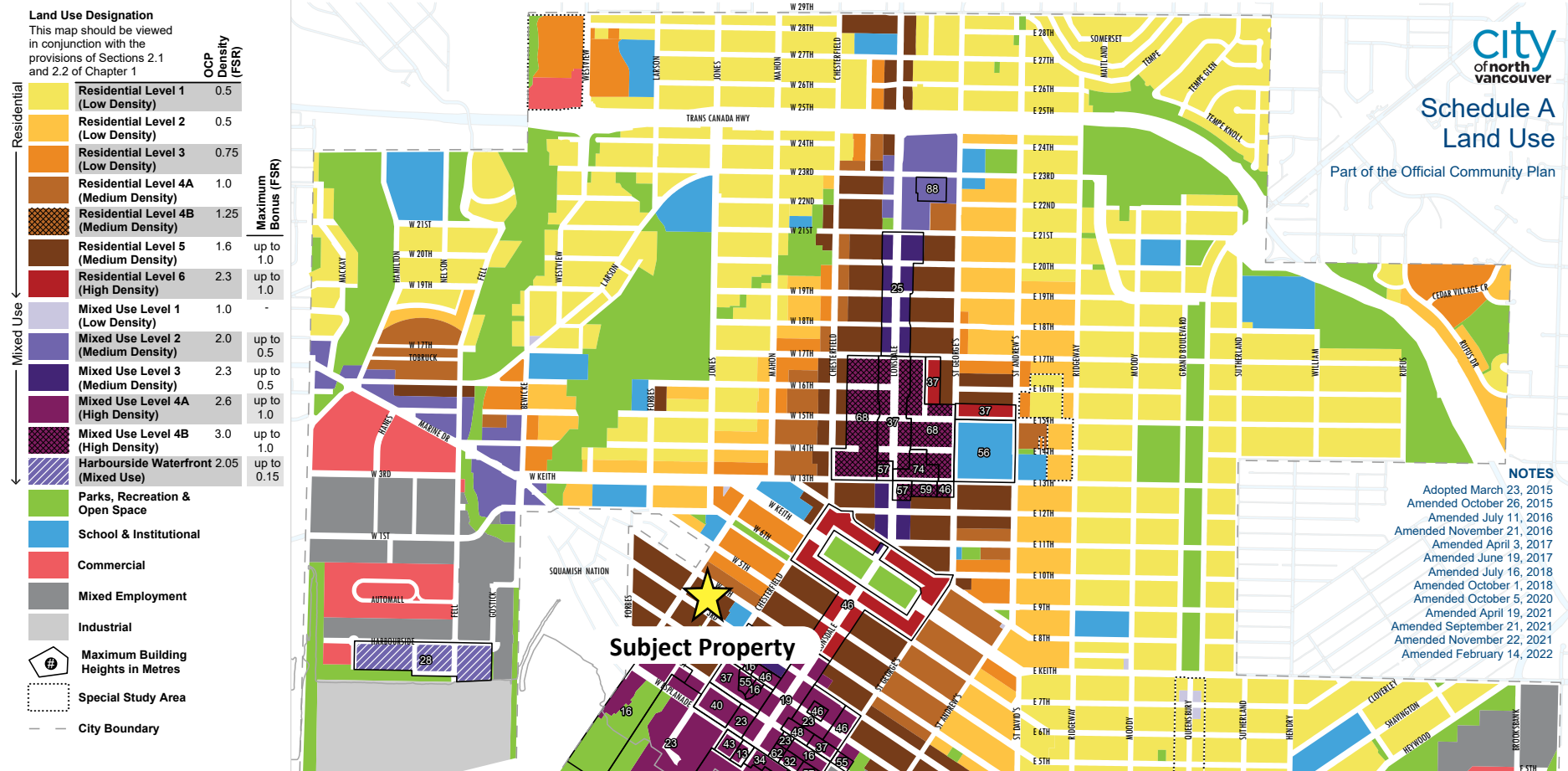
## PROPERTY DETAILS

Legal	PL VAP15002 DL 271 BL 134 LT D New Westminster Land District
PID	007-712-073
Zoning	RM-1 Medium Density Apartment
OCP	Residential Level 5 (Up to 2.6 FSR)
Lot Size & Dimensions	17,998 SF   118' x 152'
Construction	4 Storey Woodframe
Year Built	1973
BC Assessment (2025)	\$10,779,000
Property Taxes (2024)	\$34,285.24
Asking Price	\$10,995,000

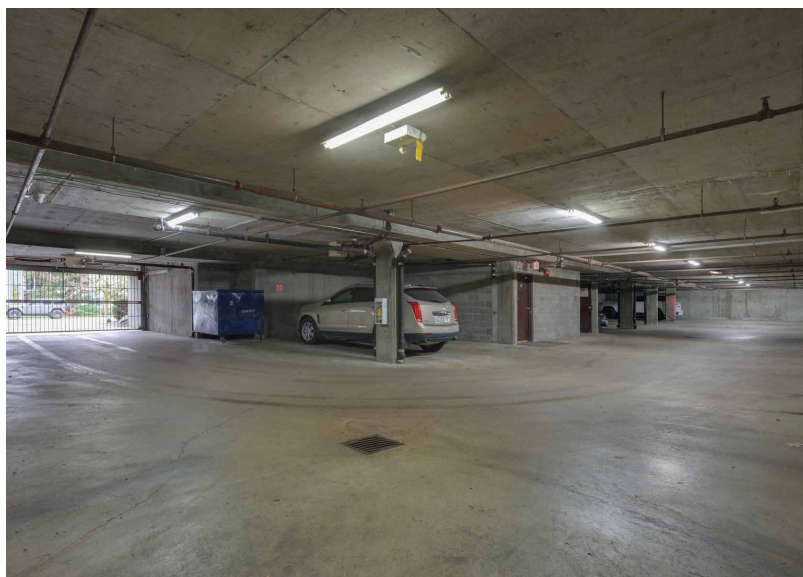


# CITY OF NORTH VANCOUVER OCP

The Residential Level 5 designation in the City of North Vancouver's Official Community Plan corresponds to medium-density apartment areas, intended for mid-rise multi-unit buildings such as strata or purpose-built rental apartments. Development in Level 5 areas is guided by zoning regulations that control height, floor space ratio (FSR), setbacks, and parking, with potential for additional density through rezoning or density-bonusing when community benefits or rental housing are provided. These areas are key targets for apartment redevelopment and housing renewal, supporting the City's goal of increasing rental and diverse housing supply while maintaining a medium-scale urban form. The Max permitted density is 1.60 FSR, with a potential up to 2.60 FSR through density bonus with a maximum height of 6 storeys.







## INVESTMENT HIGHLIGHTS



### Below Market Rents

Below market rents providing the purchaser with great upside opportunity upon tenant turnover.



### Suite Mix

Mix of 18 One-Bedroom and 12 Two-Bedroom units.



### Low Vacancy

The immediate region has an extremely low 1.5% vacancy rate as per the CMHC 2024 data.



### Parking

30 ground level secured spaces and 4 covered visitor spots



### Location

Close to a number of city amenities, parks, schools and transit, with easy access to main arteries all while being surrounded by beautiful greenery.



### Zoning | OCP

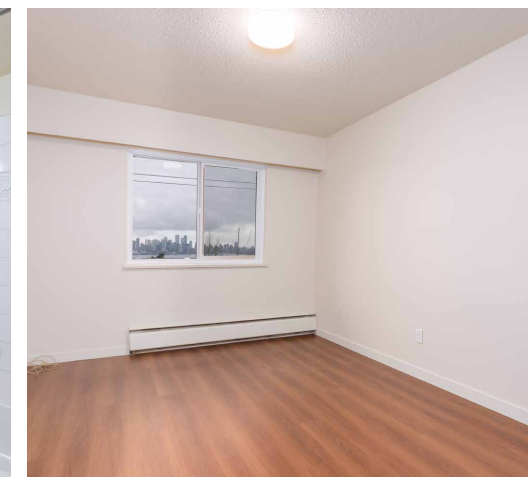
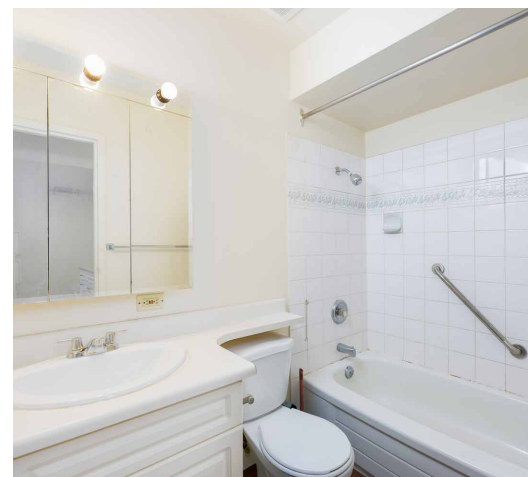
Long-term redevelopment potential as designated by the North Vancouver OCP; up to 2.6 FSR as purpose built rental.



### Active Repair and Maintenance by Existing & Previous Ownership

Actively maintained building with limited near-term capital expenditures required.





## UNIT SUMMARY

Unit Type	1 Bedroom	2 Bedroom
Total Units	18	12
Current Avg. Rent	\$1,451	\$1,646
Potential Market Rent	\$2,100	\$2,650
% Below Market	45%	60%



Walk Score

Bike Score

Transit Score



94



73



63

## LEGEND

- 1 Lonsdale Seabus
- 2 Semisch Park
- 3 Waterfront Park
- 4 Fresh St. Market
- 5 Lonsdale Quay Market
- 6 7-Eleven
- 7 The Shipyards

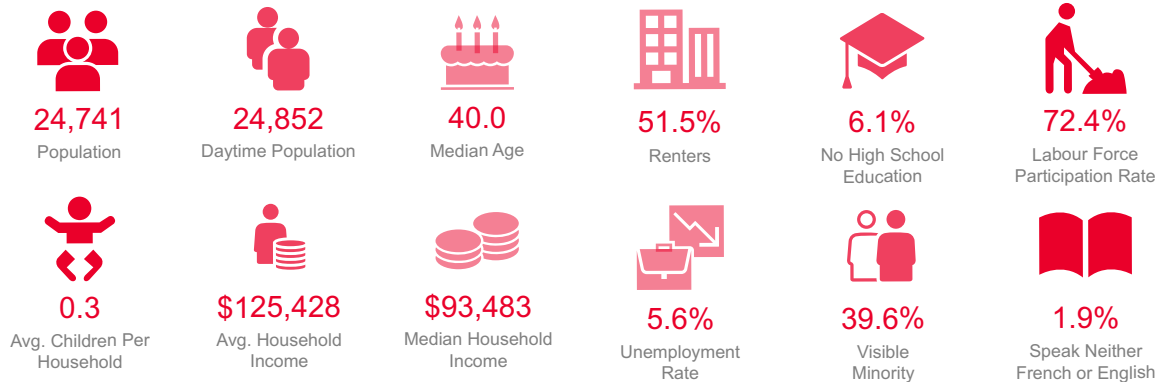
Lionsgate Hospital  
5 Min Drive

Downtown Vancouver  
10 Min on SeaBus

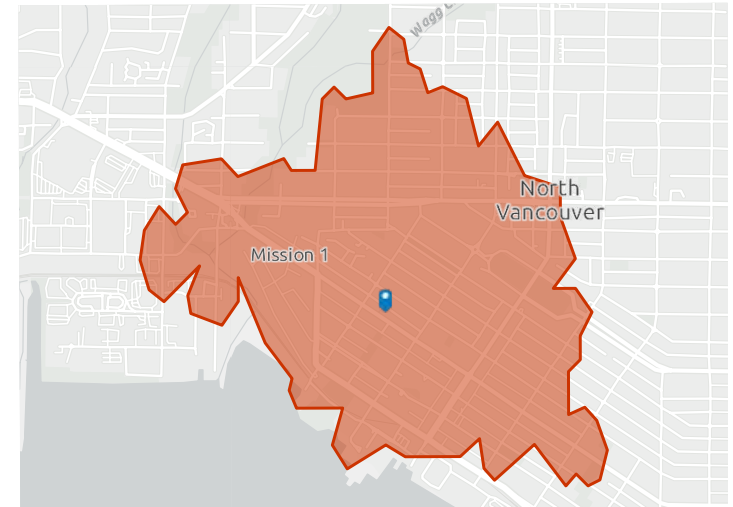
Greenwood  
Manor



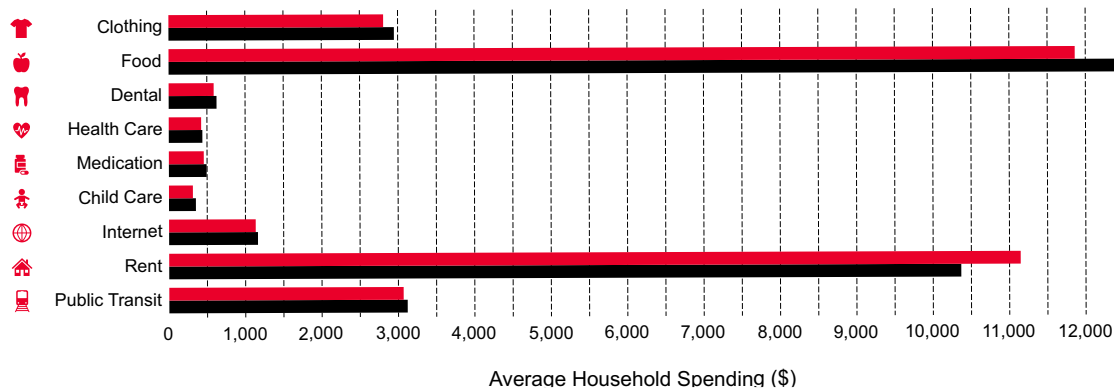
# DEMOGRAPHICS & SPENDING (3 MINS DRIVE)



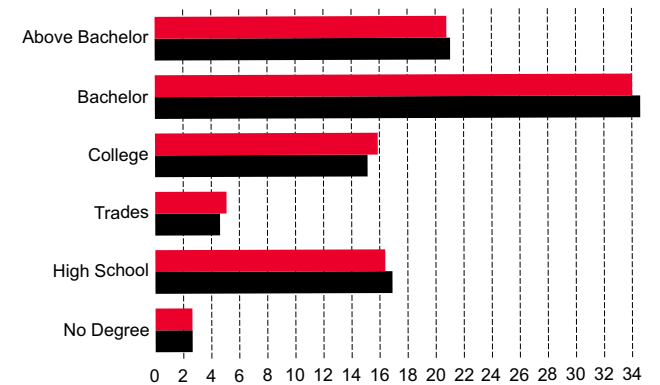
3 minutes




## HOUSEHOLD SPENDING



## EDUCATIONAL ATTAINMENT







## Chris Hayne

Associate Vice President  
Multifamily Investment Specialist

O: 604 493 3002 x708  
C: 778 998 4663  
E: [chris.hayne@rlpcommercial.com](mailto:chris.hayne@rlpcommercial.com)

## Billy Yang

Senior Associate  
Commercial Land & Development

O: 604 493 3002 x6  
C: 778 899 0528  
E: [billyyang@rlpcommercial.com](mailto:billyyang@rlpcommercial.com)

\*Personal Real Estate Corporation

Disclaimer: The information contained herein has been obtained from sources believed reliable. While we do not doubt its accuracy we have not verified it and make no guarantee, warranty or representation about it. It is your responsibility to independently confirm its accuracy and completeness. Any projections, opinions, assumptions, or estimates used are for example only and do not represent the current or future performance of the property. The value of this transaction depends on tax and other factors which should be evaluated by your tax, financial and legal advisors. You and your advisors should conduct a careful, independent investigation of the property to determine to your satisfaction the suitability of the property for your needs.

Royal LePage Sussex | 2397 Marine Drive | West Vancouver  
BC Canada | V7V 1K9 | P 604 493 3002  
[www.rlpcommercialvancouver.com](http://www.rlpcommercialvancouver.com)

