



Superior Access.
Highly Desirable Amenities.

Located directly across the street from the Superdome, 1515 and 1555 Poydras are Class A office towers with superior access and highly desirable amenities.

The combination of currently available high quality space and multiple parking options is unsurpassed within the CBD.



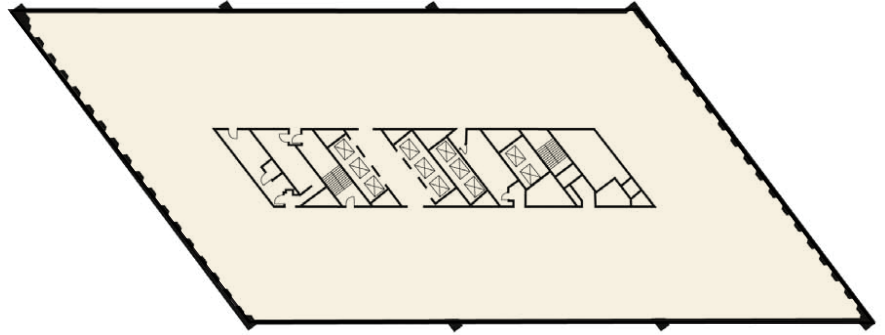
120,000 SQUARE FEET
OF CONTIGUOUS
SPACE NOW
AVAILABLE!





1515 POYDRAS

27 Floors, 529,474 Rentable Square Feet



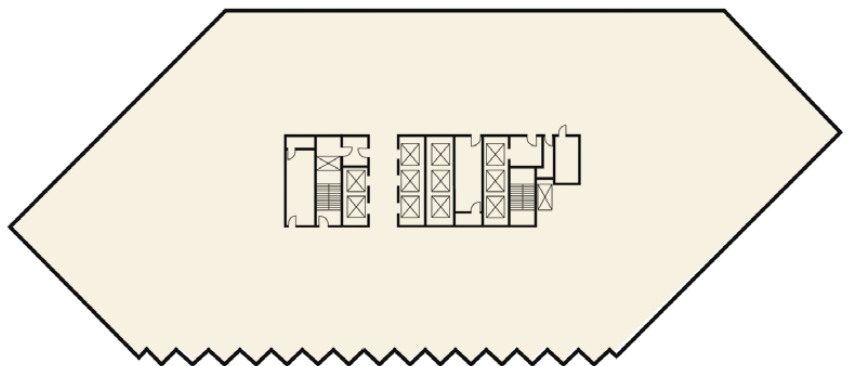
Typical Floorplate
22,000 RSF

Tenants and visitors enjoy:

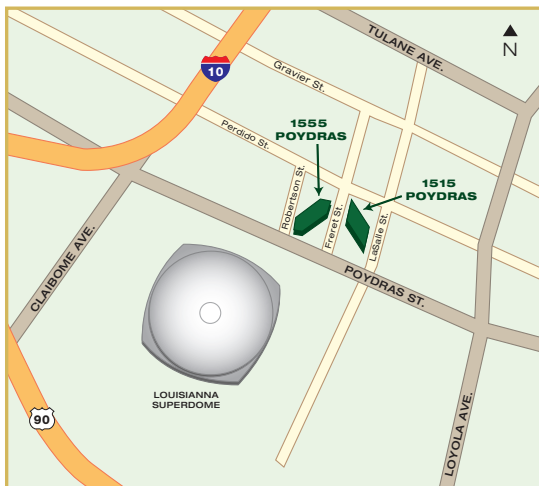
- Superior Freeway Access
- Attached Parking Garage with Above-market Availability
- 24-Hour Courtesy Guard
- After-Hours Card-Key Access
- On-Site Management
- Complementary Shuttle Bus Service
- Conference Room
- On-site Restaurants, Sundry Shop and Services
- Restaurants, Hotels and Banks within Walking Distance

1555 POYDRAS

22 Floors, 467,671 Rentable Square Feet



Typical Floorplate
22,000 RSF



For Leasing Information Contact: Greg Riera, CCIM

504.585.2678 greg.riera@am.jll.com

1515 Poydras St., Suite 1970, New Orleans, LA 70112

1515 Poydras.com or 1555 Poydras.com