



PROPERTY DESCRIPTION

COMMERCIALLY ZONED PROPERTY AVAILABLE FOR LEASE IN TOWNSEND! Situated in the heart of Townsend at the signalized intersection of Summit Bridge Road (Rt. 71) and Pine Tree Road, this 0.85 acre +/- property features 3,000 SF +/- of available space with premium visibility and frontage.

Currently fit-out as an automobile dealership, the 2-story standalone building features a wide-open showroom with partitioned perimeter offices and shop space containing three (3) overhead doors with pull-through capability. Don't miss your chance to be located at the corner of the busiest intersection in the fast-growing Townsend!

PROPERTY DETAILS

- **Available:** 3,000 SF +/-
- **Lease Rate:** \$3,500/Month NNN
- **Premises:** 0.85 acres
- **Traffic Counts:** 15,000 VPD
- **Zoning:** 25 - C (Commercial)

DEMOGRAPHICS	1 MILE	3 MILES	5 MILES
Total Population	3,311	11,013	36,089
Total Households	855	3,238	11,839
Average HH Income	\$117,482	\$118,746	\$115,995
Median Age	35.7	36.3	35.8

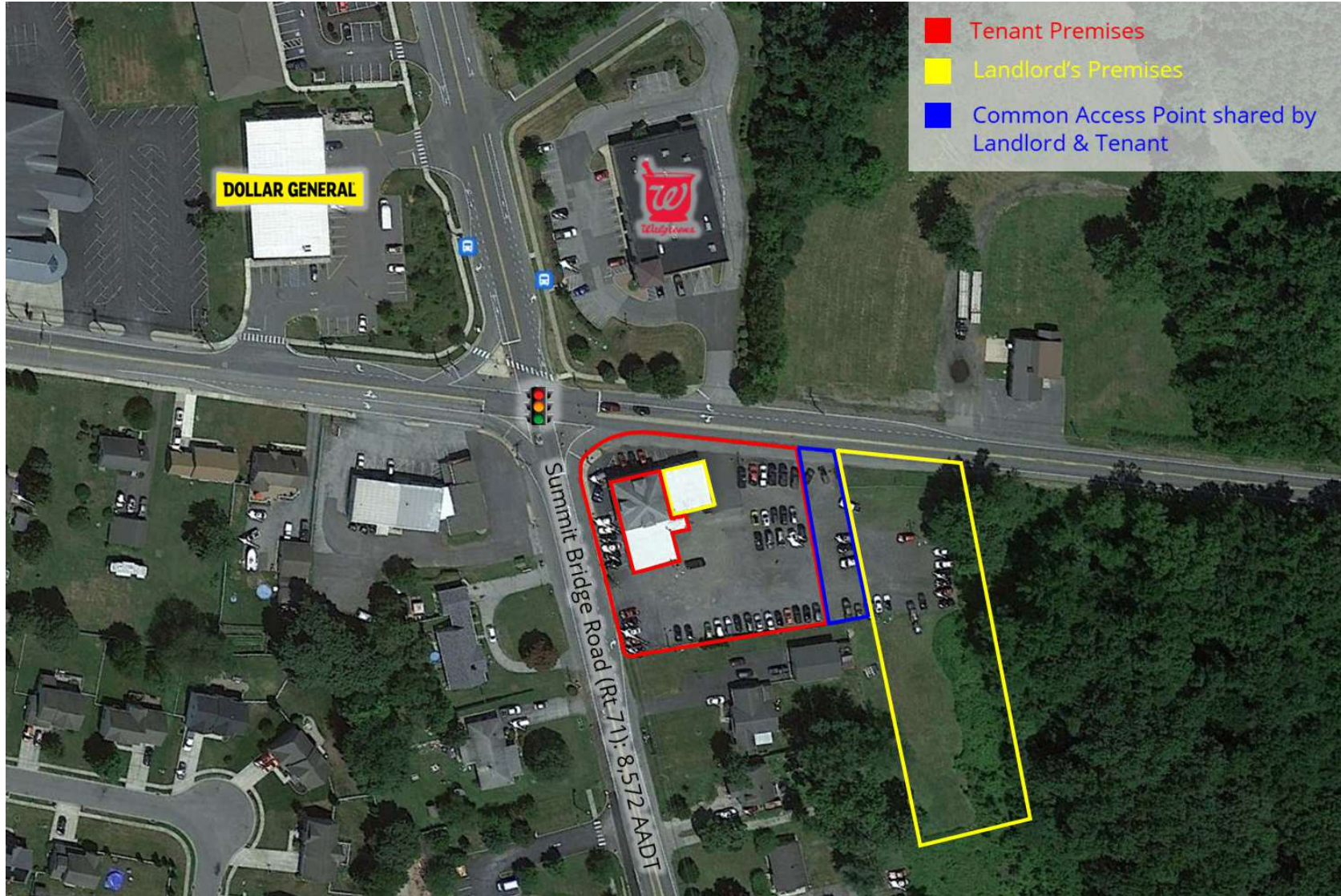


For More Information, Contact:

Ryan Bree
rbree@dsmre.com
302.283.1800 Office
302.668.5430 Cell

Davis Mitchell
dmitchell@dsmre.com
302.283.1800 Office
302.530.2512 Cell

DSM Commercial
Real Estate Services
3304 Old Capitol Trail
Wilmington, DE 19808
dsmre.com

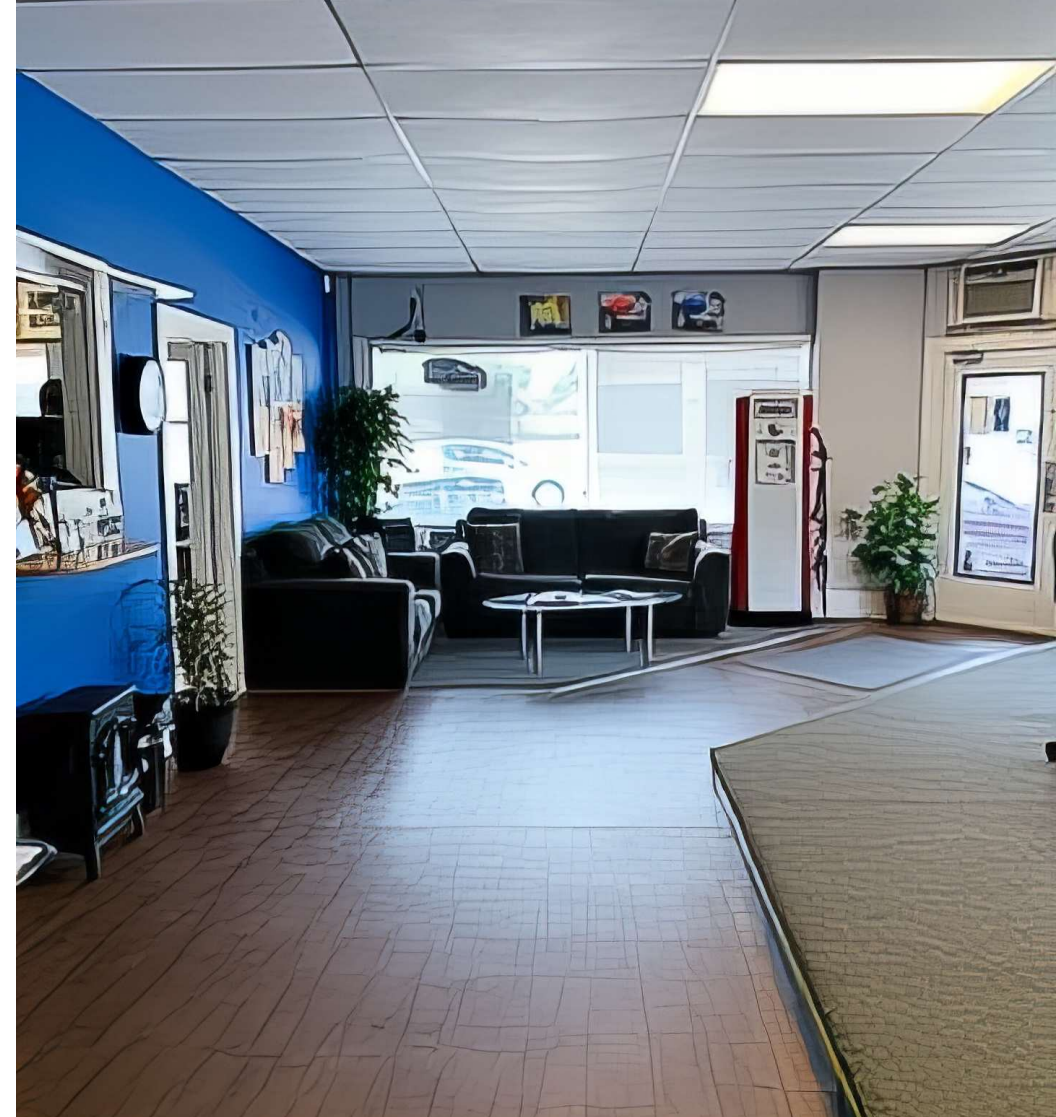


For More Information, Contact:

Ryan Bree
rbree@dsmre.com
302.283.1800 Office
302.668.5430 Cell

Davis Mitchell
dmitchell@dsmre.com
302.283.1800 Office
302.530.2512 Cell

DSM Commercial
Real Estate Services
3304 Old Capitol Trail
Wilmington, DE 19808
dsmre.com

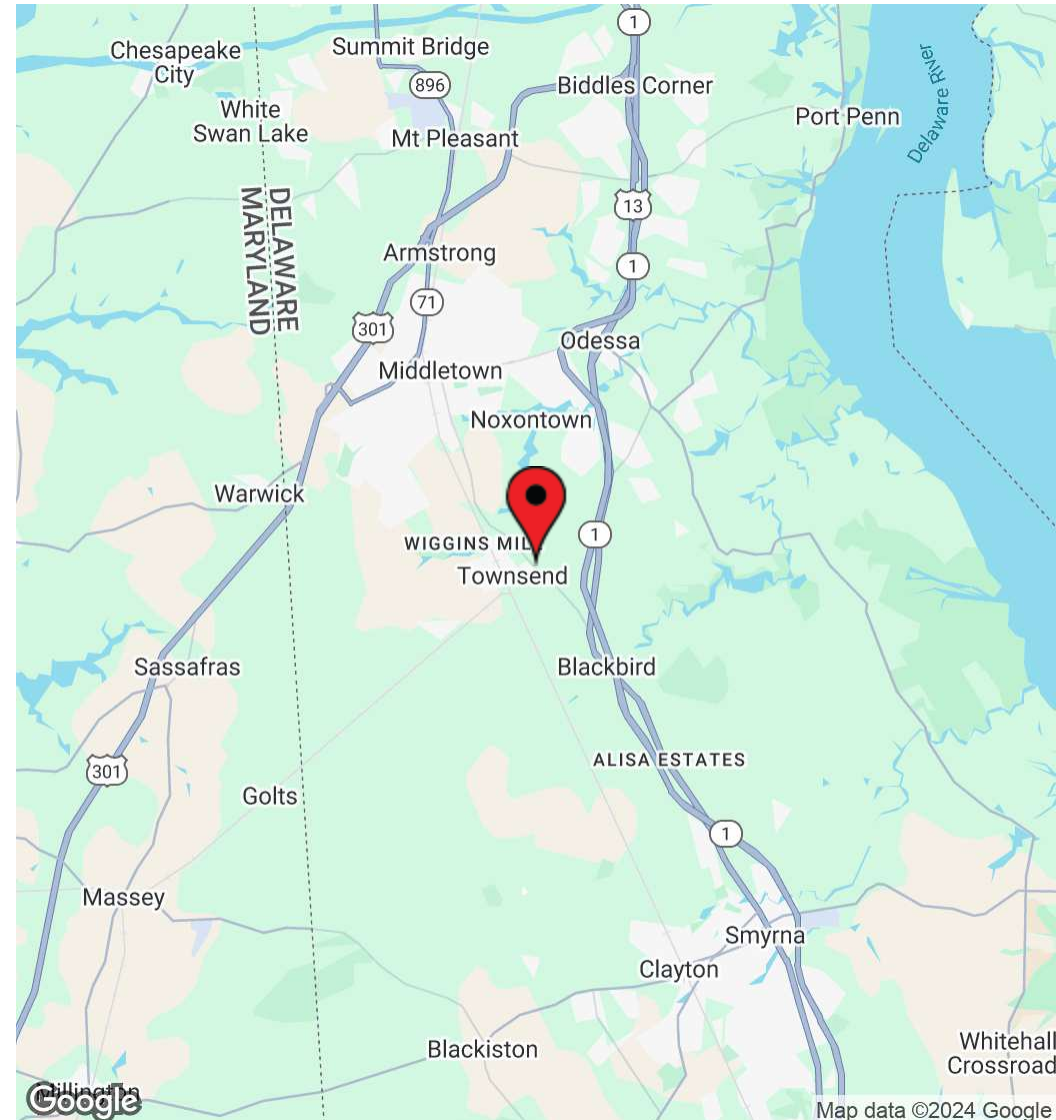
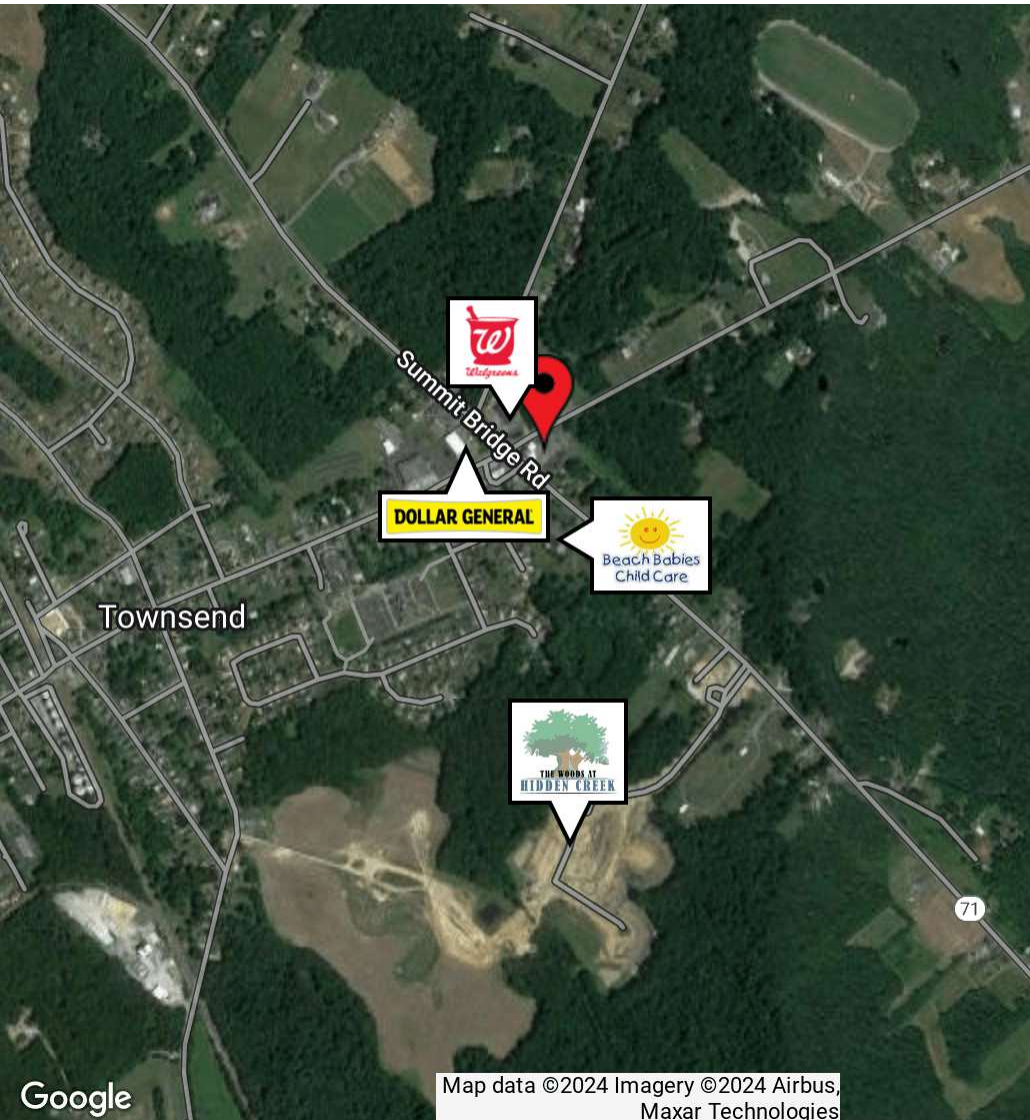


For More Information, Contact:

Ryan Bree
rbree@dsmre.com
302.283.1800 Office
302.668.5430 Cell

Davis Mitchell
dmitchell@dsmre.com
302.283.1800 Office
302.530.2512 Cell

DSM Commercial
Real Estate Services
3304 Old Capitol Trail
Wilmington, DE 19808
dsmre.com



For More Information, Contact:

Ryan Bree
rbree@dsmre.com
302.283.1800 Office
302.668.5430 Cell

Davis Mitchell
dmitchell@dsmre.com
302.283.1800 Office
302.530.2512 Cell

DSM Commercial
Real Estate Services
3304 Old Capitol Trail
Wilmington, DE 19808
dsmre.com