

FOR LEASE

338 N Canal Street - Unit #21

South San Francisco, CA 94080



COLE STROMBOM

650.302.3805

cole@strombom.com

LIC. #01953946

OFFICE CONTACT

916.299.6698

info@strombom.com

LIC. #02155363

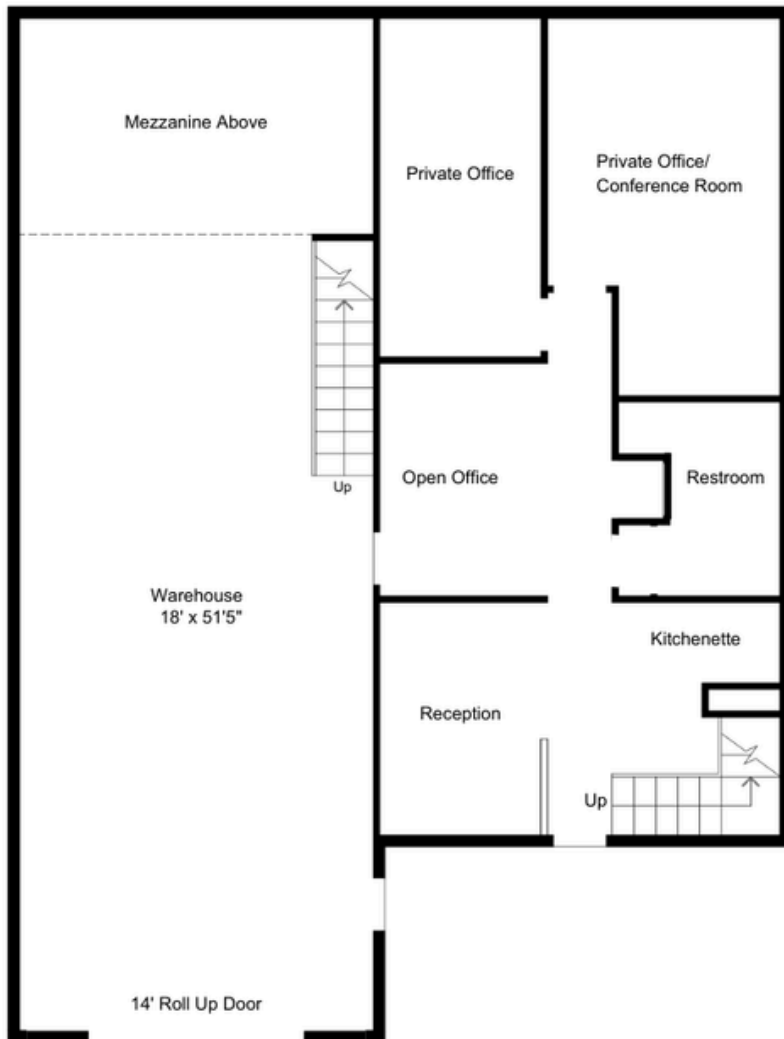


FOR LEASE - UNIT #21

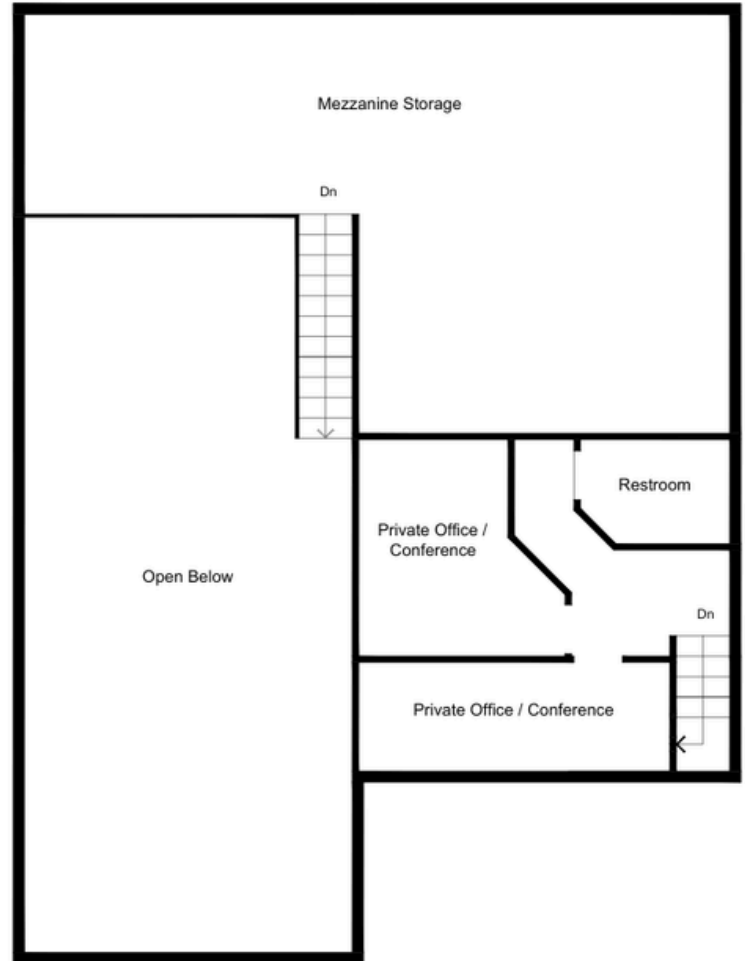
338 N Canal Street | South San Francisco

HIGHLIGHTS

- +/- 2,550 SF Industrial Condo
- + Bonus Mezzanine Storage
- 14' Garage Roll Up Door
- 3 Reserved Parking Spaces
- Built out office with kitchenette, multiple privates and conference rooms
- Close to Downtown SSF
- Excellent Freeway Access



Ground Floor



Mezzanine Level