

Sarah Dominguez	Taylor Dominguez	Charlee Gutierrez
President	Commercial Agent	Commercial Agent
915 433 0800	915 373 8617	915 316 1682
sarah@grayce.us	taylor@grayce.us	charlee@grayce.us

Property For Lease

3270 JOE BATTLE BLVD.
EL PASO, TX 79936

UP TO 6,562 SF
AVAILABLE





City Overview

El Paso, Texas—a vibrant border city where rich cultural heritage meets modern growth and opportunity. Nestled between the Franklin Mountains and the Rio Grande, El Paso offers a unique blend of Southwestern charm, a strong healthcare infrastructure, and a growing population that supports a diverse range of medical services. With its strategic location, business-friendly environment, and ongoing investment in healthcare and infrastructure, El Paso presents a compelling landscape for medical real estate development.



The city's healthcare sector continues to expand in response to regional demand, driven by population growth, a large bi-national community, and partnerships with institutions like Texas Tech University Health Sciences Center and the University of Texas at El Paso. El Paso's stable economy, low cost of living, and supportive municipal policies create an attractive environment for providers looking to establish or grow their presence in the region.



About This Property

Property Details

This three-story, Class A medical office building is located on the campus of The Hospitals of Providence East Campus. The property offers a total building size of 60,495 square feet with up to 7,949 square feet available for lease. Zoned as C4 commercial, the building is specifically designed for medical office use and provides abundant parking spaces for tenants and visitors. Rental rates are available upon request, making this a highly flexible leasing opportunity for healthcare providers seeking a modern, well-located facility.



3270 JOE BATTLE BLVD. - EL PASO, TX - 79936



Property Details

7,949 SF AVAILABLE FOR LEASE

Building Size	60,495 SF
SF Available	7,949 SF Available
# of Stories	3
Building Class	A
Type of Business	Medical Office Building
Lease Rate	Call for Rates
Lease Type	NNN
Zoning	C4

3270 JOE BATTLE BLVD. - EL PASO, TX - 79936

3270 JOE BATTLE BLVD. - EL PASO, TX - 79936

Site Aerial



3270 JOE BATTLE BLVD. - EL PASO, TX - 79936

Site Aerial

WITH SURROUNDING BUSINESSES



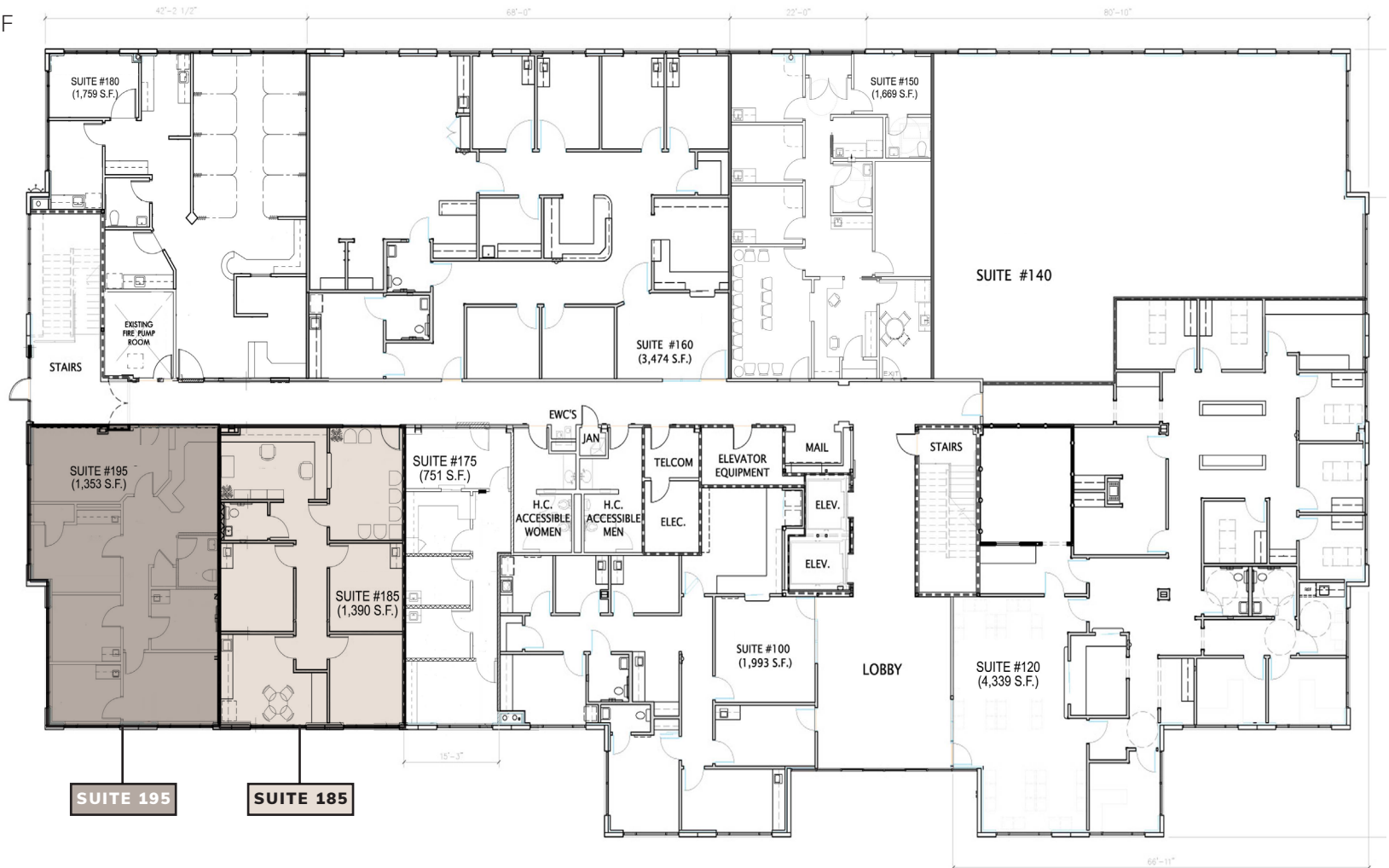


Space Layouts

AVAILABLE SPACES

1ST FLOOR

- SUITE 185: 1,390 RSF
- SUITE 195: 1,353 RSF



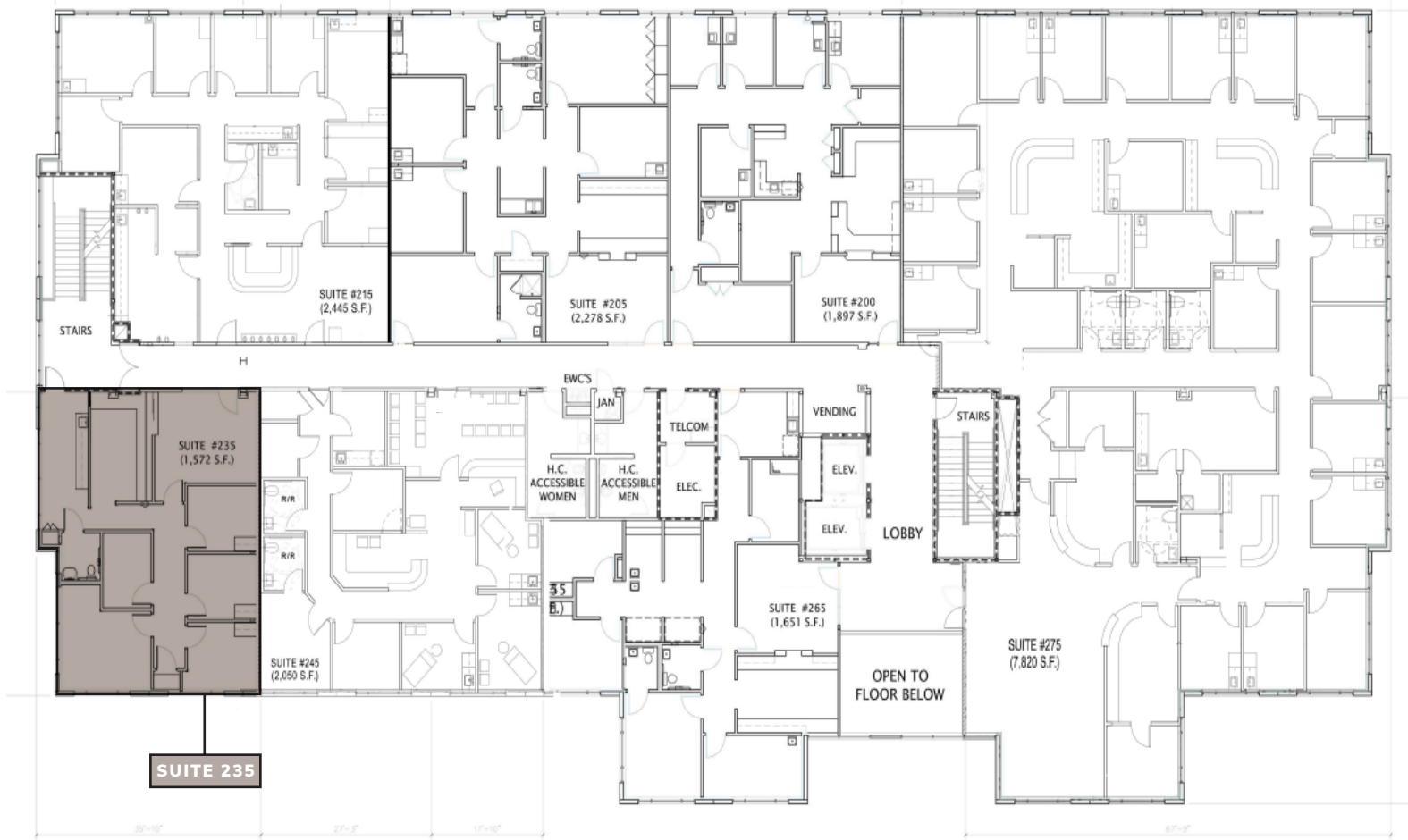


Space Layouts

AVAILABLE SPACES

2ND FLOOR

- SUITE 235: 1,572 RSF

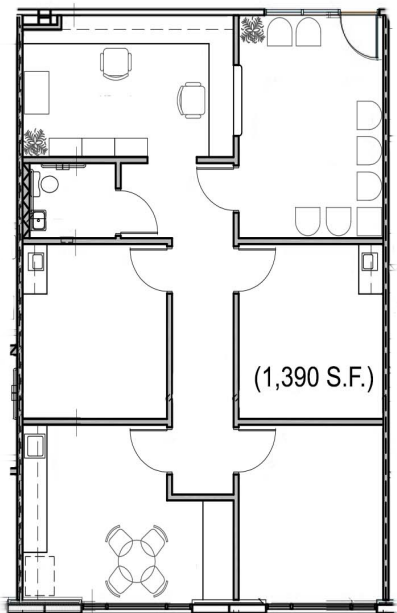




Space Layouts

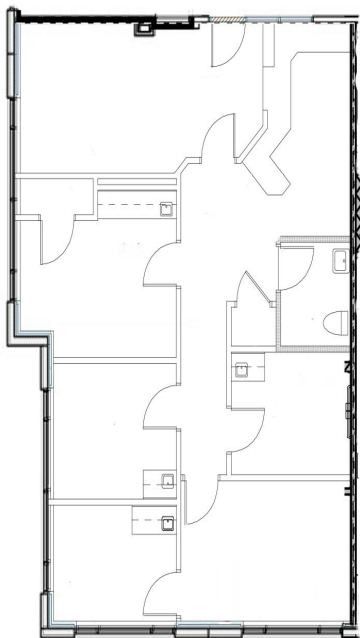
SUITE 185

1,390 SF



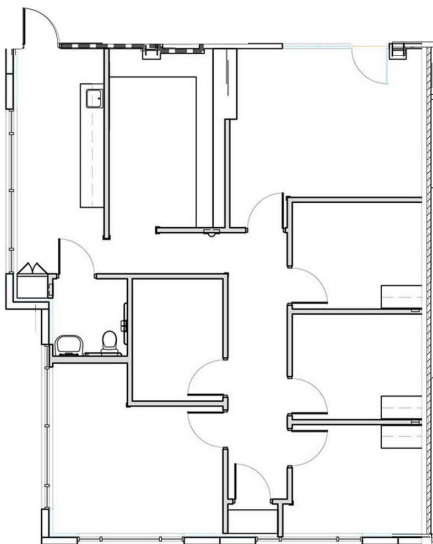
SUITE 195

1,353 SF



SUITE 235

1,573 SF



3270 JOE BATTLE BLVD. - EL PASO, TX - 79936



Property Photos

INTERIOR PHOTOS



3270 JOE BATTLE BLVD. - EL PASO, TX - 79936



Property Photos

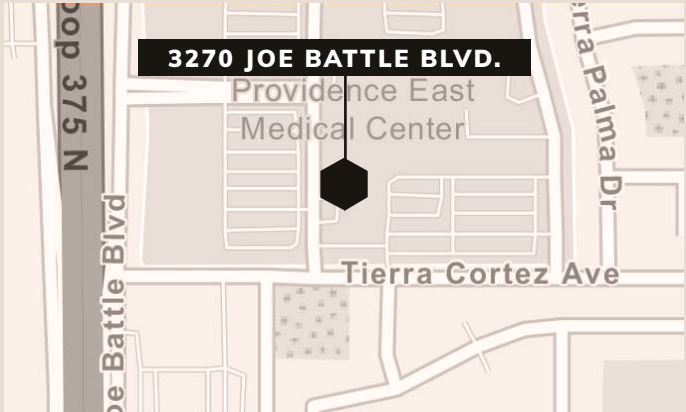
INTERIOR PHOTOS





Traffic Volume

IMMEDIATE AREA



Average Daily Traffic Volume	
▲	Up to 6,000 vehicles per day
▲	6,001 - 15,000
▲	15,001 - 30,000
▲	30,001 - 50,000
▲	50,001 - 100,000
▲	More than 100,000 per day

Sarah Dominguez	Taylor Dominguez	Charlee Gutierrez
President	Commercial Agent	Commercial Agent
915 433 0800	915 373 8617	915 316 1682
sarah@grayce.us	taylor@grayce.us	charlee@grayce.us

Property For Lease

3270 JOE BATTLE BLVD.
EL PASO, TX 79936

UP TO 6,562 SF
AVAILABLE

