

6800 Broken Sound Pkwy

Boca Raton, FL 33487

±50,809 SF CLASS A OFFICE BUILDING IN BOCA RATON



PROPERTY HIGHLIGHTS

- + ±50,809 SF Class "A" office building
- + Outstanding Owner-User Investment Opportunity
- + ±15,000 SF can be Available for Owner/User Upon Closing
- + 4:1,000 parking ratio
- + Frontage along Clint Moore Road and located within the Park at Broken Sound business park
- + Close to food service, banking facilities, health club, golf course, hotels and child care facilities
- + On-site security

AVAILABLE PROPERTIES

Suite	Rentable SF	Availability
Suite 100	±3,533	IMMEDIATE
Suite 125	±3,542	7/1/2025
Suite 150	±8,363	3/1/2025
Suite 200	±11,426	IMMEDIATE
Suite 201	±6,256	8/1/2025
Suite 300	±17,686	Leased

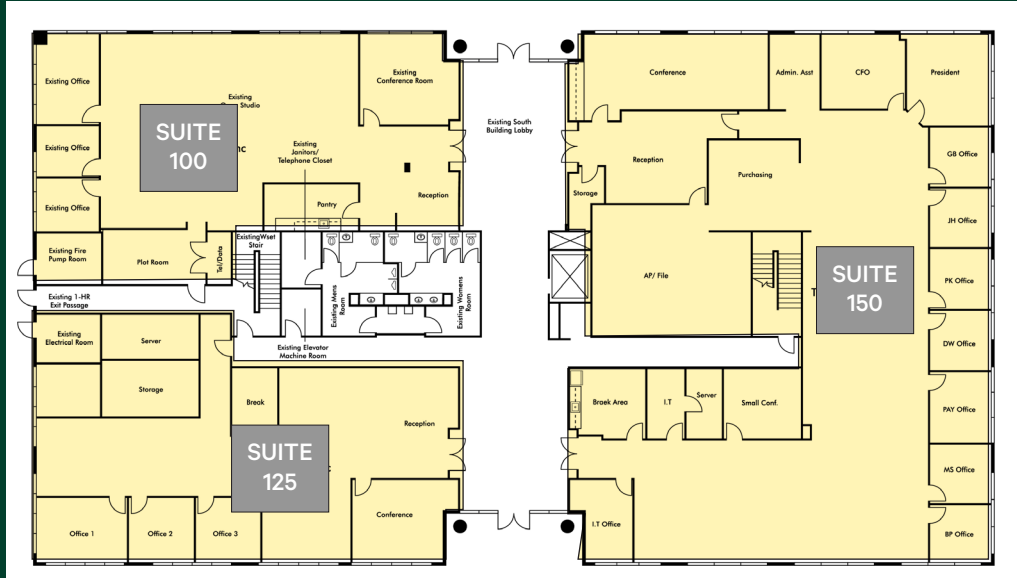
Sale Price: \$14,000,000

Owner Financing Available

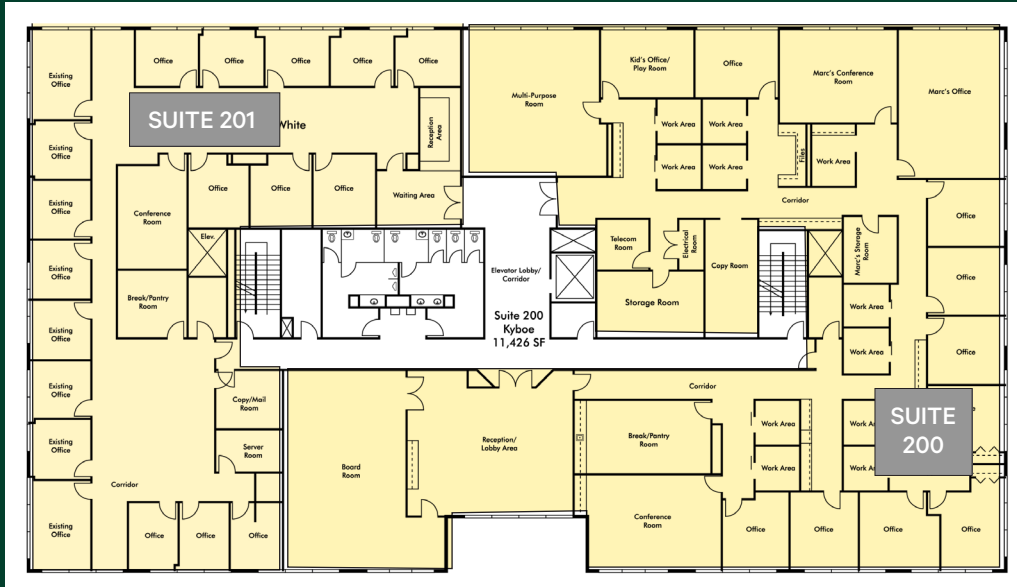
Contact Us

JEFFREY KELLY
Executive Vice President
+1 561 393 1621
jeffrey.kelly@cbre.com

FIRST FLOOR



SECOND FLOOR



THIRD FLOOR



±50,809 SF CLASS A OFFICE BUILDING
6800 Broken Sound Parkway | Boca Raton, FL

For Sale

PROPERTY PHOTOS



Building Lobby



2nd Floor Lobby



Office Area



Suite 100 Conference Room

±50,809 SF CLASS A OFFICE BUILDING
6800 Broken Sound Parkway | Boca Raton, FL

For Sale

AERIAL LOCATION



Contact Us

JEFFREY KELLY
Executive Vice President
+1 561 393 1621
jeffrey.kelly@cbre.com

© 2024 CBRE, Inc. All rights reserved. This information has been obtained from sources believed reliable, but has not been verified for accuracy or completeness. You should conduct a careful, independent investigation of the property and verify all information. Any reliance on this information is solely at your own risk. CBRE and the CBRE logo are service marks of CBRE, Inc. All other marks displayed on this document are the property of their respective owners, and the use of such logos does not imply any affiliation with or endorsement of CBRE. Photos herein are the property of their respective owners. Use of these images without the express written consent of the owner is prohibited.