

Medical Space For Lease

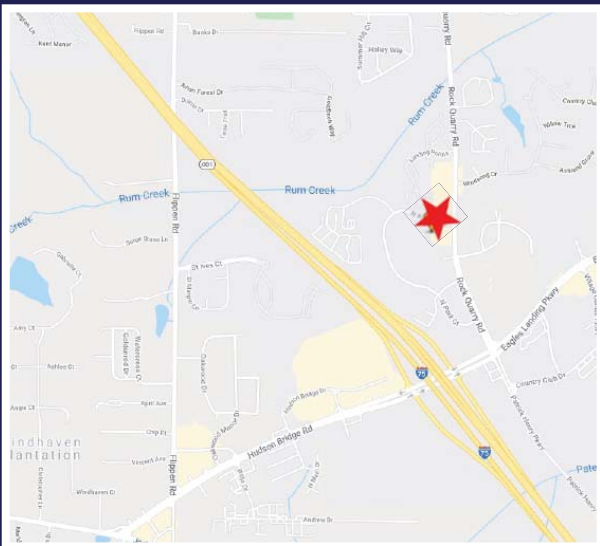
**115 North Park Trail
Stockbridge, GA 30281
(Henry County)**



**Space Available: 1,900sf
Lease Rate: \$17.00/sf (NNN)**

Property Details:

- Medical Suite Available
Suite 115: 1,900sf
- Existing Medical Practices In The Immediate Area
- Excellent Visibility on North Park Trail with Monument Signage
- Proximity to Piedmont Henry Hospital
- Walking Distance to Restaurants & Banks
- Easy Access to I-75 and I-675
- Traffic Count Per Vehicle 20,483



For more information, please contact:

Michael Ulin

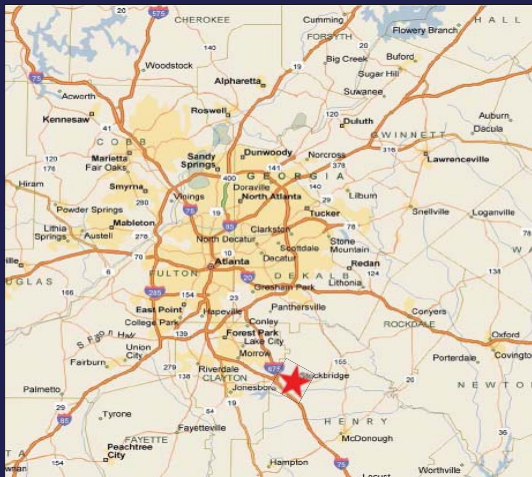
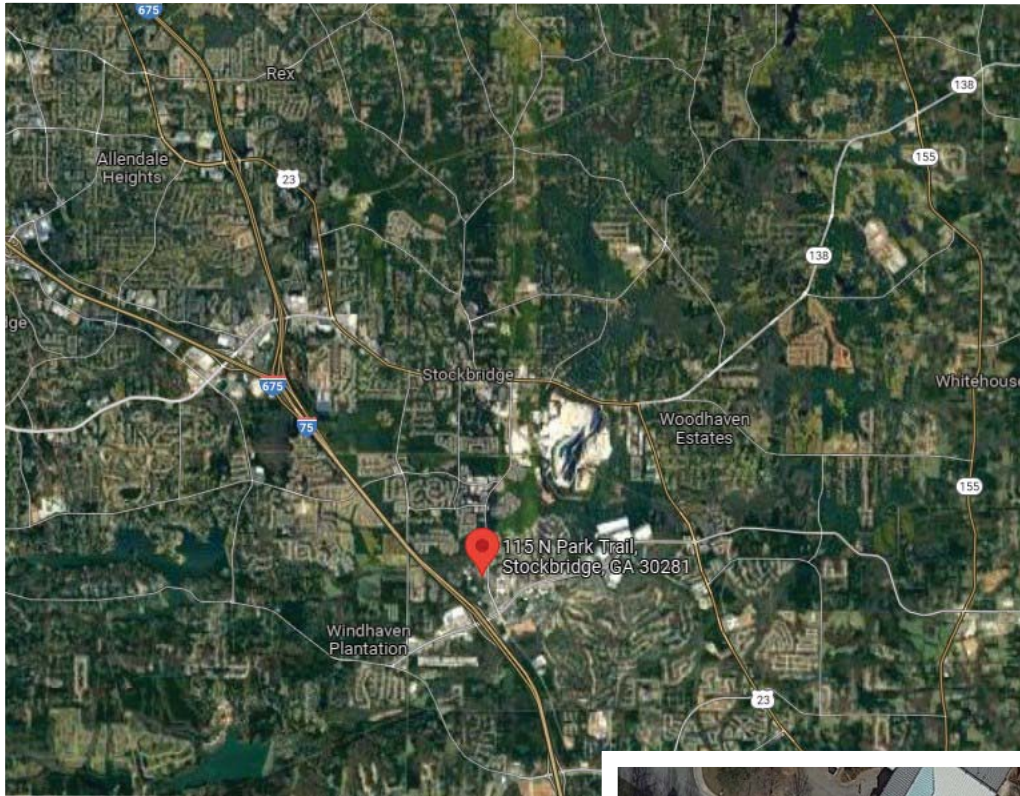
(c) 404-966-6698

(o) 770-393-2006

mulin@rg-re.com



115 North Park Trail, Stockbridge



For more information, please contact:

Michael Ulin

(c) 404-966-6698

(o) 770-393-2006

mulin@rg-re.com

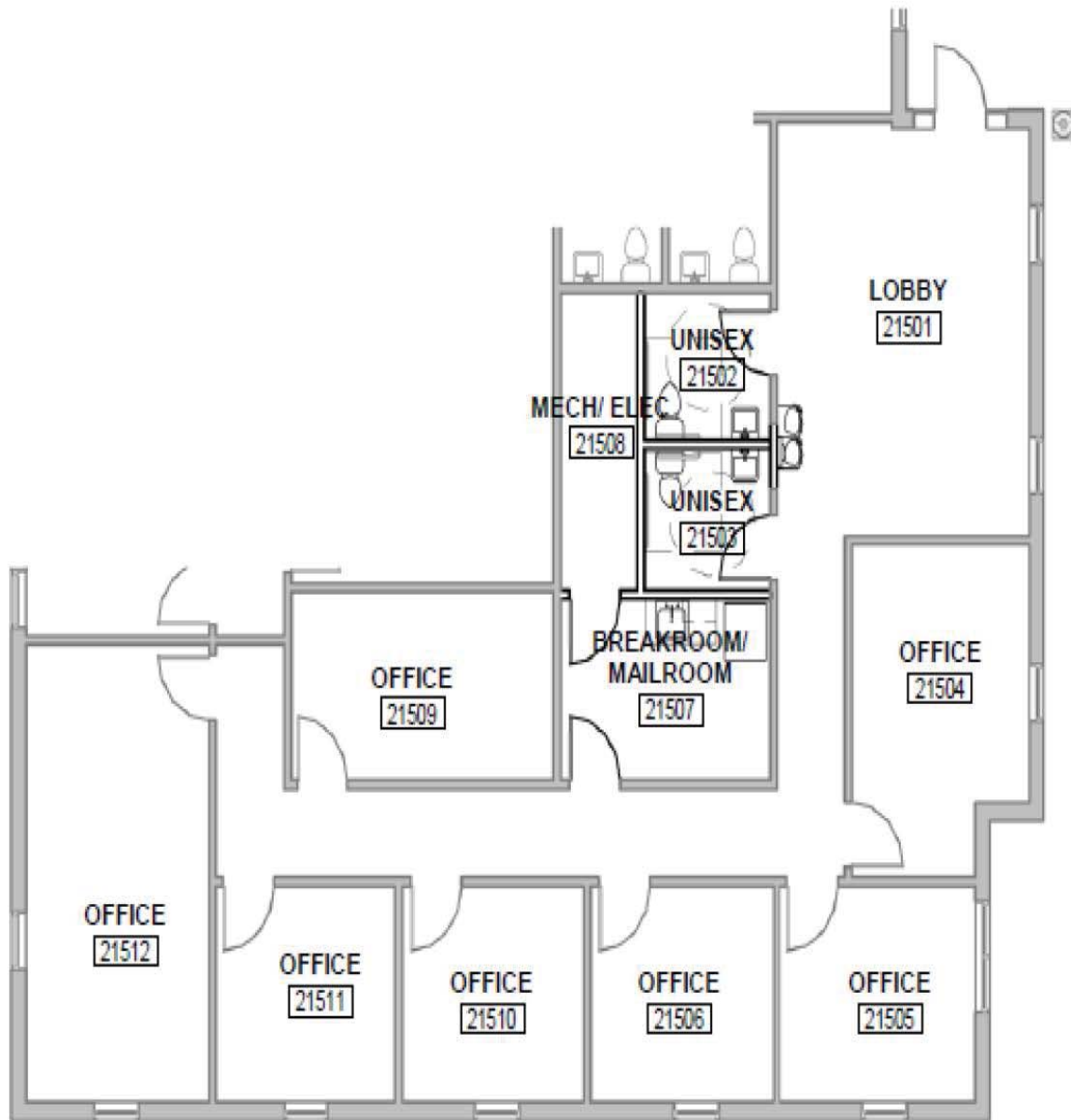


1835 Savoy Drive | Suite 101 | Atlanta, GA 30341 | Work. 770-393-2006 | www.rg-re.com

(Information contained herein has been obtained from sources we deem reliable. We have no reason to doubt its accuracy, but we do not guarantee it.)

115 North Park Trail, Stockbridge

Floor Plan Suite 115 1,900 SF



For more information, please contact:

Michael Ulin

(c) 404-966-6698

(o) 770-393-2006

mulin@rg-re.com

