

FOR LEASE

THE ATRIUM

543-545 Martin Luther King Drive, Jersey City, NJ 07304



PROPERTY DESCRIPTION

Two newly constructed retail spaces for lease at the base of new mixed-use, luxury building. 1,165 square feet or 3,274 square feet, seeking Cafe's, medical and daily needs tenants.

PROPERTY HIGHLIGHTS

- New construction.
- Excellent frontage.
- Accessible Street parking.
- Blocks from the Light Rail.
- Outdoor Seating Available
- Surrounded by new development
- Seeking Salons, Cafes and Medical tenants.

OFFERING SUMMARY

Lease Rate:	Negotiable
Number of Units:	2
Available SF:	1,165 - 3,274 SF
Building Size:	25,000 SF

DEMOGRAPHICS	0.5 MILES	1 MILE	1.5 MILES
Total Households	10,599	31,879	54,742
Total Population	28,115	80,259	134,241
Average HH Income	\$68,907	\$68,216	\$76,225

CHRISTOPHER CONWAY

(201)-720-5310

cconway@atlanticcoastalre.com

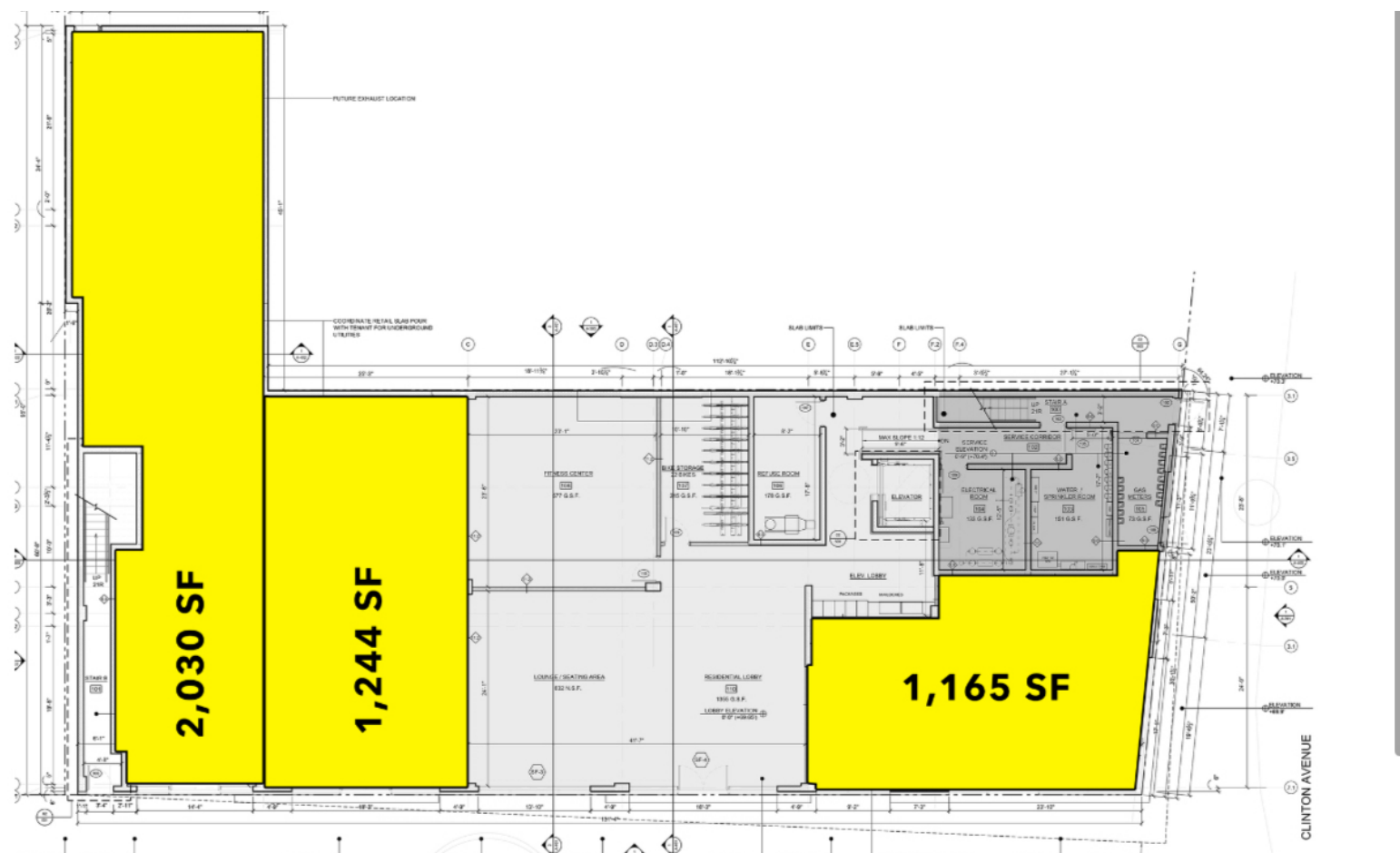
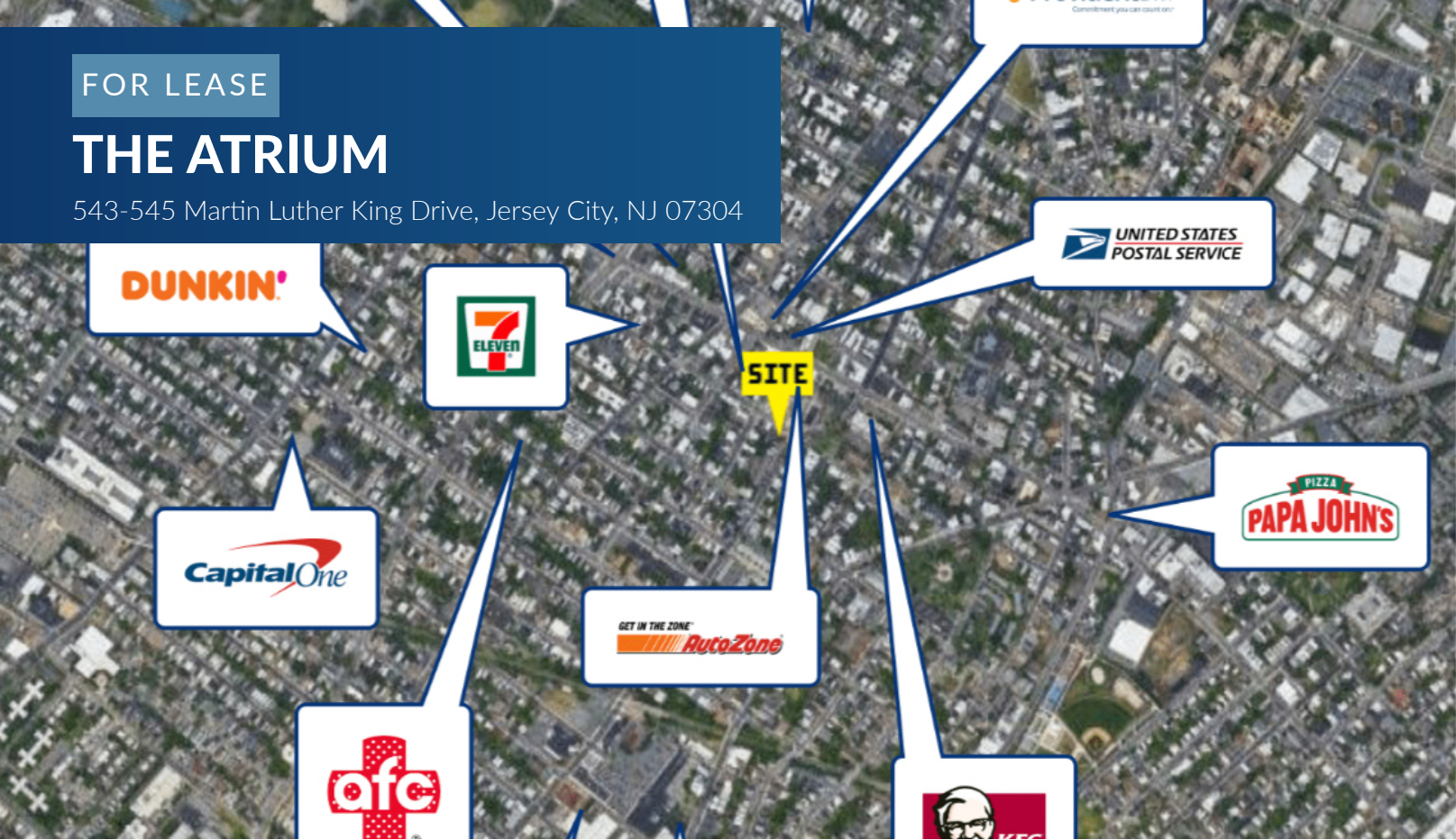
Atlantic Coastal Real Estate | 93 Central Avenue, Jersey City, NJ 07306 | atlanticcoastalre.com



FOR LEASE

THE ATRIUM

543-545 Martin Luther King Drive, Jersey City, NJ 07304



CHRISTOPHER CONWAY

(201)-720-5310

cconway@atlanticcoastalre.com

Atlantic Coastal Real Estate | 93 Central Avenue, Jersey City, NJ 07306 | atlanticcoastalre.com

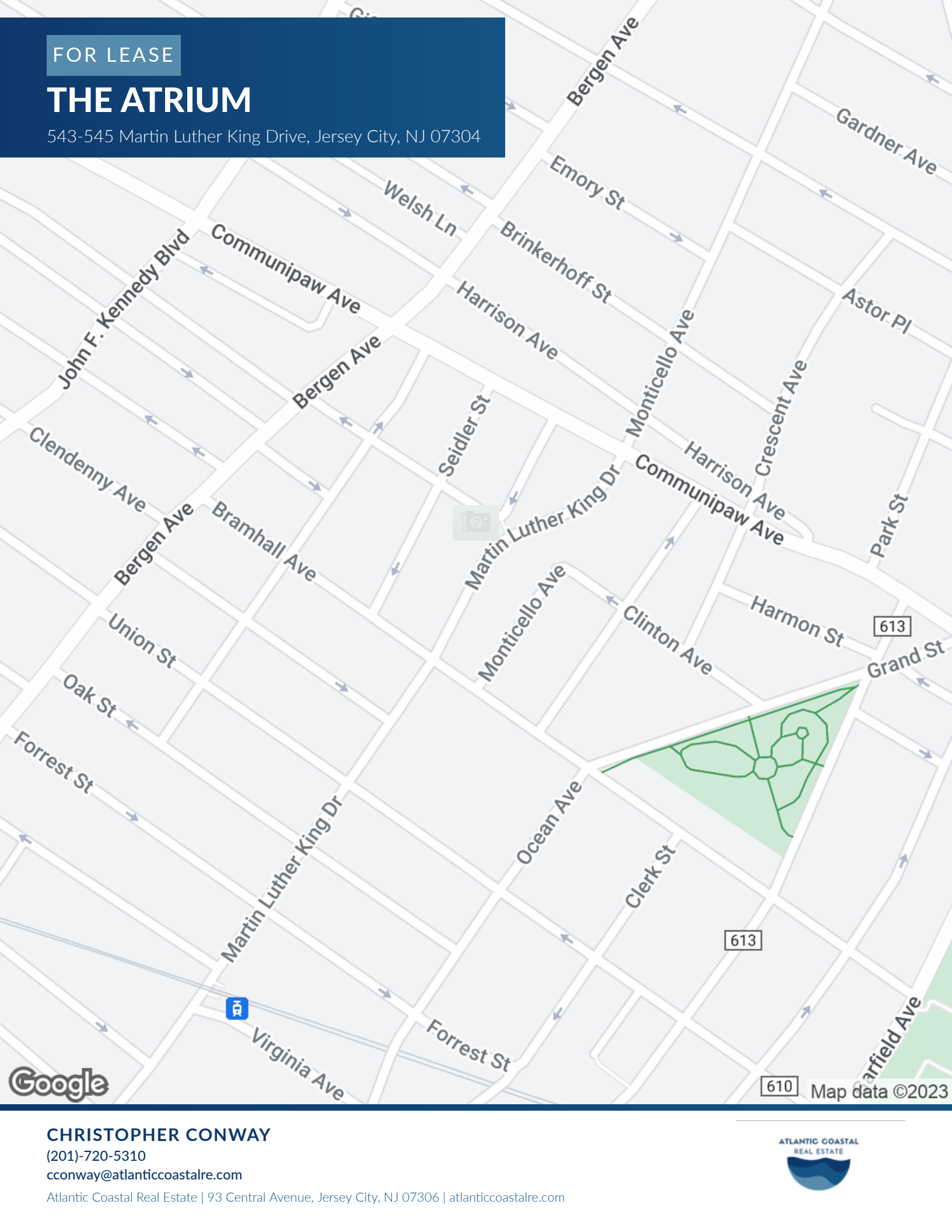
ATLANTIC COASTAL
REAL ESTATE



FOR LEASE

THE ATRIUM

543-545 Martin Luther King Drive, Jersey City, NJ 07304



CHRISTOPHER CONWAY

(201)-720-5310

cconway@atlanticcoastalre.com

Atlantic Coastal Real Estate | 93 Central Avenue, Jersey City, NJ 07306 | atlanticcoastalre.com

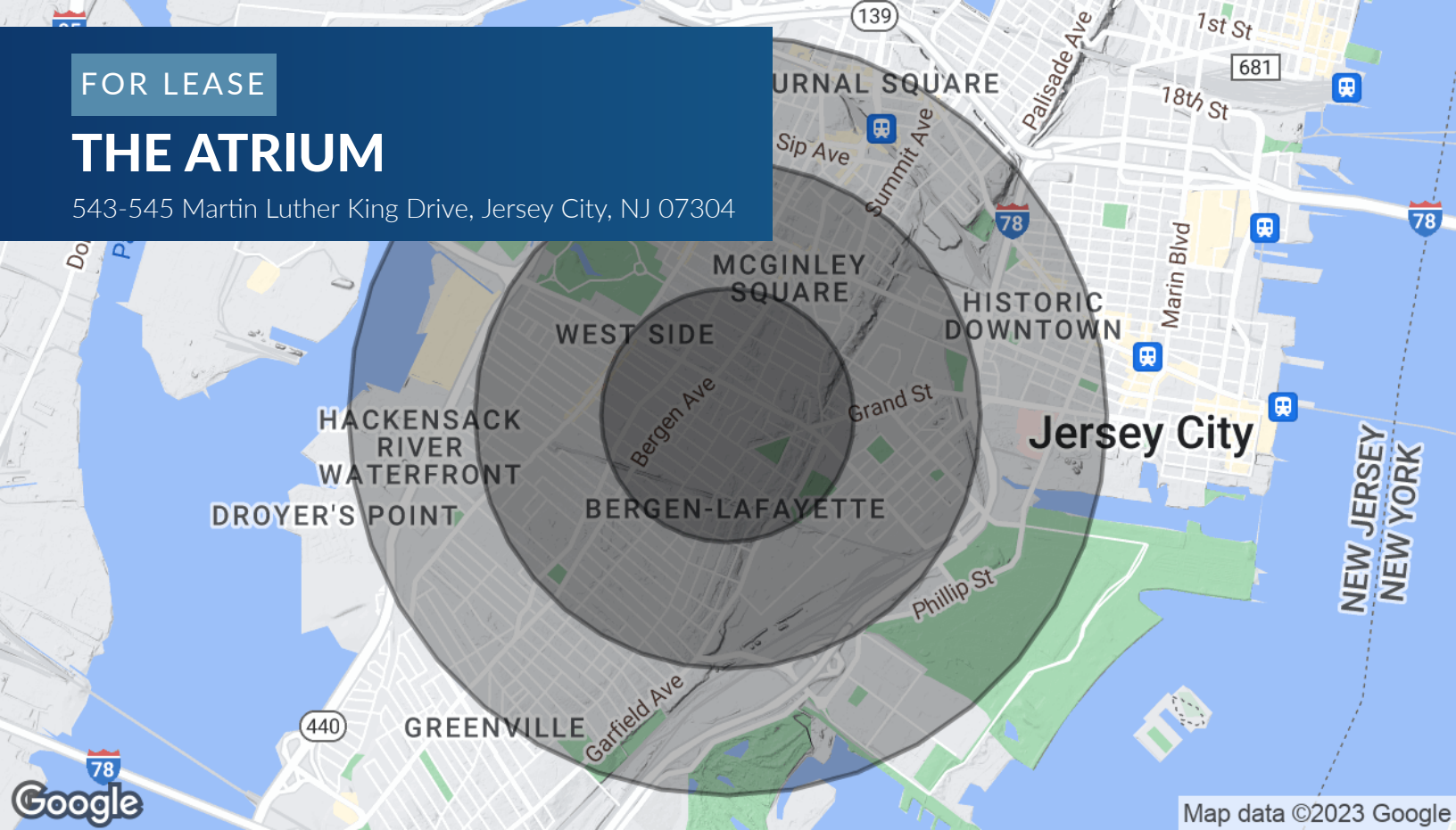
ATLANTIC COASTAL
REAL ESTATE



FOR LEASE

THE ATRIUM

543-545 Martin Luther King Drive, Jersey City, NJ 07304



POPULATION	0.5 MILES	1 MILE	1.5 MILES
Total Population	28,115	80,259	134,241
Average Age	34.4	35.0	34.7
Average Age (Male)	33.3	33.4	33.1
Average Age (Female)	34.7	36.2	36.0

HOUSEHOLDS & INCOME	0.5 MILES	1 MILE	1.5 MILES
Total Households	10,599	31,879	54,742
# of Persons per HH	2.7	2.5	2.5
Average HH Income	\$68,907	\$68,216	\$76,225
Average House Value	\$327,909	\$293,203	\$350,879

* Demographic data derived from 2020 ACS - US Census

CHRISTOPHER CONWAY

(201)-720-5310

cconway@atlanticcoastalre.com

Atlantic Coastal Real Estate | 93 Central Avenue, Jersey City, NJ 07306 | atlanticcoastalre.com

