

# THE HIGHLAND

AKA 2840 ATLANTIC AVENUE



OVER 3,000 SF OF RETAIL SPACE AVAILABLE



# THE HIGHLAND

## PROPERTY HIGHLIGHTS:

- Includes accessible loading dock
- Below-grade availability as well
- Includes dedicated parking, 300+ apartments
- Great for: Retail, Medical, Office users

**SPACE A:** 1,500 SF Ground Floor

**SPACE B:** 1,500 SF Ground Floor  
2,143 SF Sub-Lower Level

**FRONTAGE:** 120' wraparound

**CEILING HEIGHT:** 16' - 20'

**POSSESSION:** Immediate

**ASKING RENT:** Upon Request

**TRANSPORTATION:** J Z C MTA Bus

CONCEPTUAL RENDERING

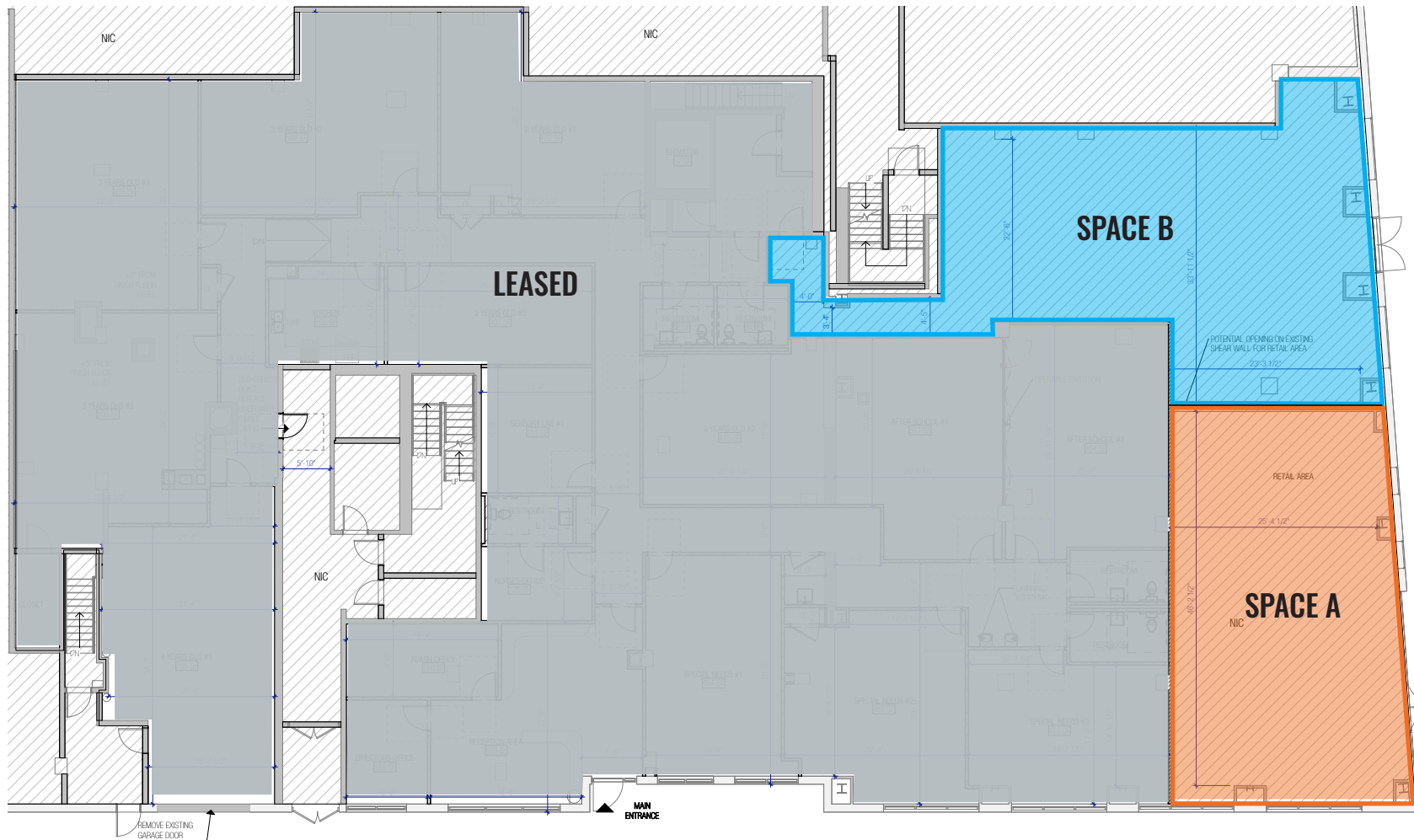


# THE HIGHLAND

## FLOOR PLAN:

■ SPACE A - 1,500 SF GROUND FLOOR

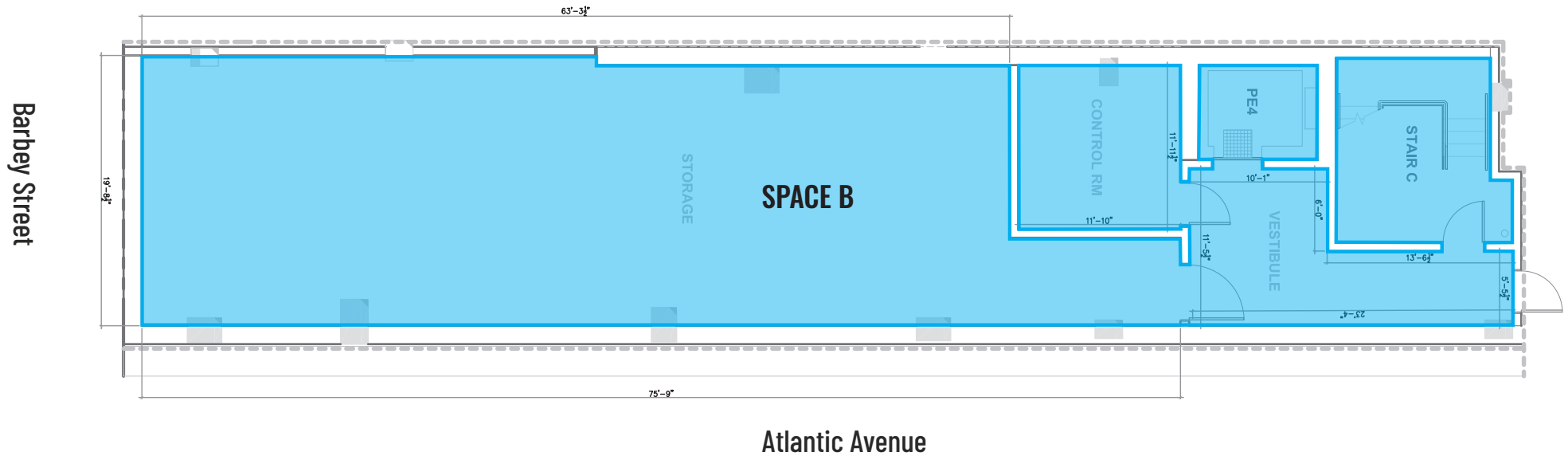
■ SPACE B - 1,500 SF GROUND FLOOR



# THE HIGHLAND

## FLOOR PLAN:

 **SPACE B - 2,143 SF SUB-LOWER LEVEL**





# THE HIGHLAND

## THE NEIGHBORHOOD:

Located just south of Highland Park, Cypress Hills is home to passionate individuals who share a strong appreciation for their neighborhood due to its rich and vibrant history, local bars, restaurants, and cafes, and community gardens, parks, and green spaces.

Highland Park, after which **The Highland** is named, is situated on a high plateau and offers stunning views of the Ridgewood Reservoir, Rockaways, and Atlantic Ocean. Charles Memorial Park and the Forest Park Golf Course are also located in close proximity to The Highland and offer a renovated clubhouse and a course that plays at over 6,000 yards with tree-lined fairways, elevated greens, and three water holes.

With vibrant community events and a wide range of culinary options, the neighborhood is known for its Caribbean, Latin American, and soul food cuisine. Local favorites include *Bonao Bar & Grill*, *Room 1 Hundred*, *Salud Bar & Grill*, *Neir's Tavern*, *Lindenwood Diner*, *Halsey Ale House*, *Bushwick Taco Company*, *Rize Brooklyn*, and *Rolo's*.

There is also a wide range of coffee shops to choose from including *The Daily Press*, *Coffee House & Bar*, *BKLYN Blend*, *Beets Cafe*, *Kaiffe Juice & Coffee*, and *Father Knows Best* as well as bars, clubs, and lounges such as *El Faro Sports Bar*, *Party Life Lounge & Bar*, *The Evergreen*, *Purgatory*, and *All Night Skate*.

Additionally, the *Gateway Center Mall* is conveniently located only two miles from **The Highland** and houses a movie theater, restaurants and over 50 retail stores.

**The Highland** is located in close proximity to several transportation options including the Long Island Rail Road Station as well as the J and Z at Van Siclen Ave - Fulton Street, the A and C at Van Siclen Ave - Pitkin Ave, and the J, Z, A, C, and L at Broadway Junction.

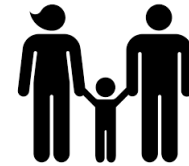


# THE HIGHLAND

## AREA DEMOGRAPHICS (1 MILE RADIUS)



POPULATION:  
**97,715**



NUMBER OF  
HOUSEHOLDS:  
**30,096**



AVG. HOUSEHOLD  
INCOME:  
**\$63,334**



TOTAL CONSUMER  
SPENDING:  
**\$677,519,488**



# THE HIGHLAND

AKA 2840 ATLANTIC AVENUE

FOR MORE INFORMATION,  
PLEASE CONTACT:

**ELI YADID**

**917.770.9173**

**EYadid@ksrny.com**

**RAFI BENOR**

**347.459.0445**

**RBenor@ksrny.com**

**JORDAN SOLEIMANI**

**516.732.3697**

**JSoleimani@ksrny.com**



1385 Broadway, 22nd Floor | New York, NY 10018

212.417.9217

[ksrny.com](http://ksrny.com)