

OFFICE / MEDICAL SPACE

6885 West 151st Street, Overland Park, KS 66223



- ☐ Professional office building just east of Metcalf on 151st Street
- ☐ Suite 203 – 1,919 RSF currently available
- ☐ Landlord will make space divisible at \$22.85/SF
- ☐ Tenant may install exterior signage on building
- ☐ Perfect for any fitness or health-related business, as well as any business/financial office use
- ☐ Landlord will consider amortizing the buildout cost of the space for tenant
- ☐ Space is beautifully finished and in excellent condition, most recently a Pilates studio
- ☐ New landscaping in 2023
- ☐ Parking lot re-striped in 2023
- ☐ ADA accessible with elevator
- ☐ Parking 4/1000
- ☐ 16,000 CPD on 151st Street
- ☐ Quick and easy access to Highway 69

2024 Demographics	1 Mile	3 Miles	5 Miles
Population	12,879	69,221	152,297
# Households	4,660	25,456	58,459
Average HH Income	\$159,490	\$198,545	\$188,354

**LEASE RATE: \$21.85/RSF Modified Gross “As-Is”
(plus utilities and janitorial)**

Roger Mason

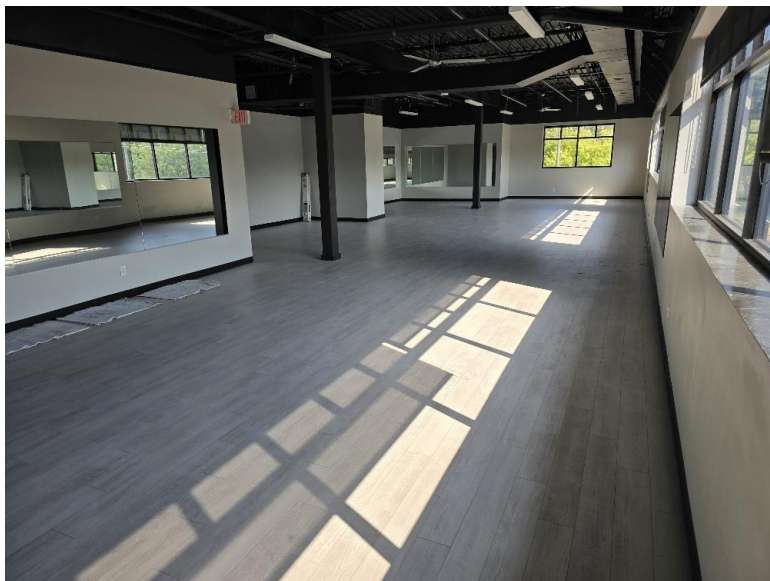
rmason@fishmancommercial.com

913.747.3303 O | 816.863.0063 C



OFFICE / MEDICAL SPACE

6885 West 151st Street, Overland Park, KS 66223



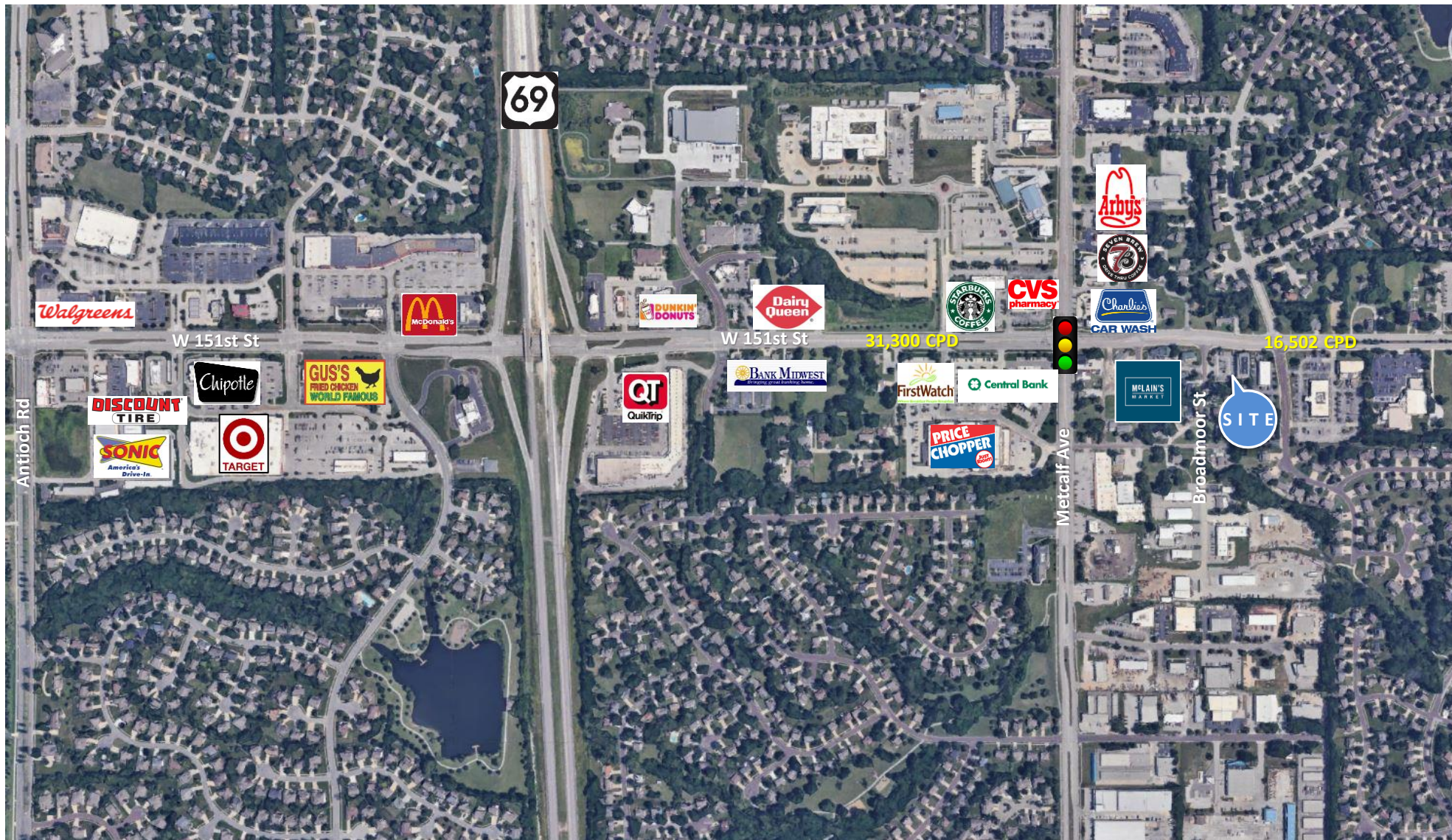
Roger Mason
rmason@fishmancommercial.com
913.747.3303 O | 816.863.0063 C



8500 West 110th Street, Suite 680, Overland Park, KS 66210 • 913.782.9000 • www.fishmancommercial.com

OFFICE / MEDICAL SPACE

6885 West 151st Street, Overland Park, KS 66223



Roger Mason

rmason@fishmancommercial.com

913.747.3303 O | 816.863.0063 C



8500 West 110th Street, Suite 680, Overland Park, KS 66210 • 913.782.9000 • www.fishmancommercial.com

OFFICE / MEDICAL SPACE

6885 West 151st Street, Overland Park, KS 66223



Roger Mason

rmason@fishmancommercial.com

913.747.3303 O | 816.863.0063 C



8500 West 110th Street, Suite 680, Overland Park, KS 66210 • 913.782.9000 • www.fishmancommercial.com