

**SELLER FINANCING  
AVAILABLE**



AVAILABLE FOR SALE

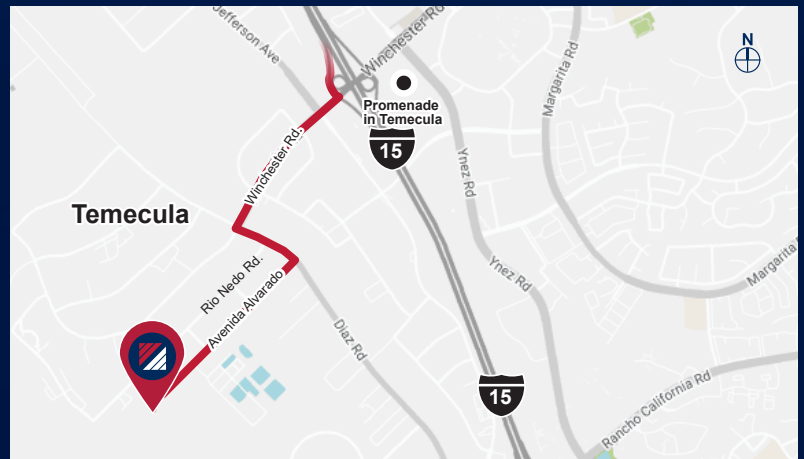
# MS MOUNTAIN VIEW BUSINESS PARK

BLDG. **13**  
THIRTEEN

4 2 6 7 2 A V E N I D A A L V A R A D O | T E M E C U L A | C A

## PROPERTY HIGHLIGHTS

- ±19,727 SF Freestanding Industrial Building For Sale
- Office = ±1,694 SF
- Warehouse = ±18,033 SF
- 32 Parking Spaces
- 277/480 volts, 800 AMPS
- ±24' Clear Height
- ESFR K25/20-PSI Sprinklers
- 2 Dock High Doors (9'x10')
- 1 Ground Level Door (12'x15')
- Zoned: Light Industrial
- Secured Yard
- Ready for Immediate Occupancy



## FOR MORE INFORMATION, CONTACT:

### NOAH SAMARIN

P: 909.912.0007 | M: 714.812.1289  
noah.samarin@daumcommercial.com  
CADRE #01755814

### NICK CANTU

P: 909.652.9054 | M: 714.787.9454  
ncantu@daumcommercial.com  
CADRE #02016719



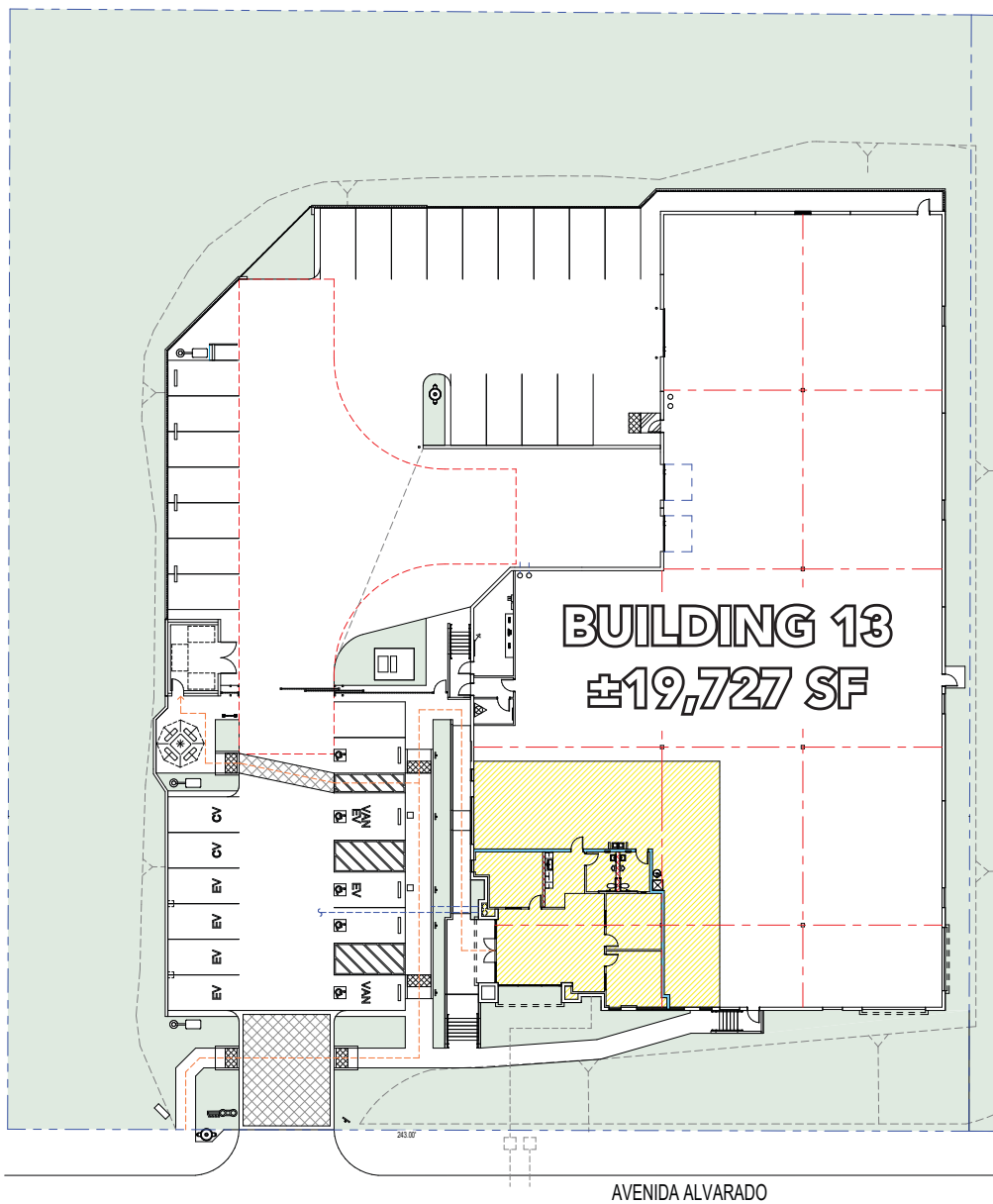
AVAILABLE FOR SALE

# MS MOUNTAIN VIEW BUSINESS PARK

BLDG. **13**  
THIRTEEN

SITE & OFFICE PLAN

4 2 6 7 2 AVENIDA ALVARADO | TEMECULA | CA



FOR MORE INFORMATION, CONTACT:

**NOAH SAMARIN**

P: 909.912.0007 | M: 714.812.1289  
noah.samarin@daumcommercial.com  
CADRE #01755814

**NICK CANTU**

P: 909.652.9054 | M: 714.787.9454  
ncantu@daumcommercial.com  
CADRE #02016719



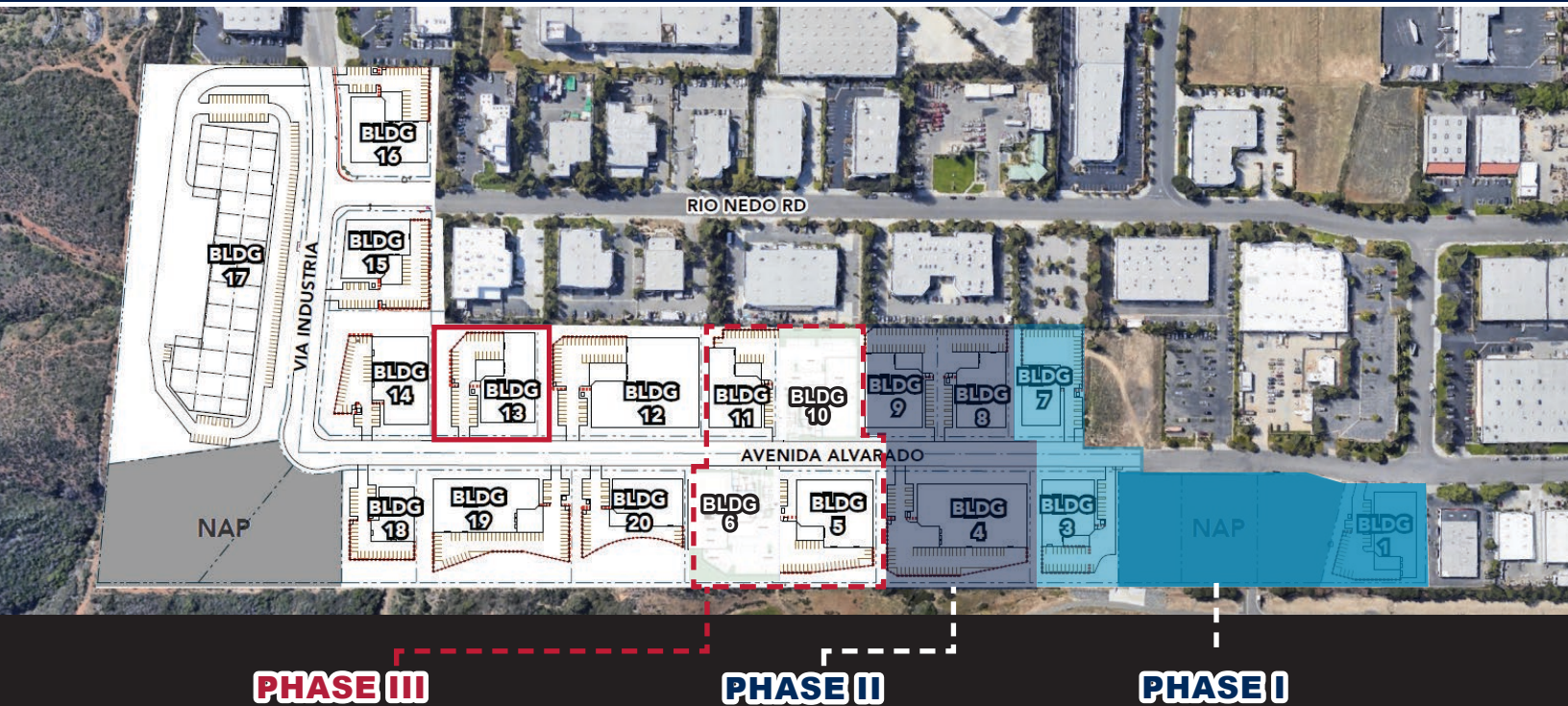
Although all information is furnished regarding for sale, rental or financing is from sources deemed reliable, such information has not been verified and no express representation is made nor is any to be implied as to the accuracy thereof, and it is submitted subject to errors, omissions, changes of price, rental or other conditions, prior sale, lease or financing, or withdrawal without notice. All Maps provided courtesy of Google Maps, Bing Maps, and Google Earth. D/AQ Corp. # 01129558

AVAILABLE FOR SALE

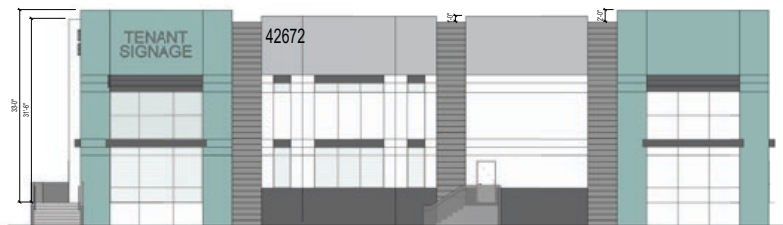
# MS MOUNTAIN VIEW BUSINESS PARK

# BLDG. THIRTEEN

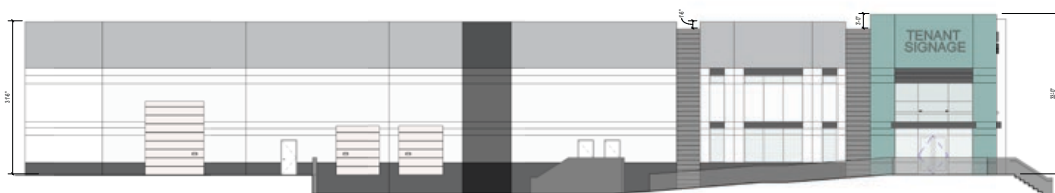
42672 AVENIDA ALVARADO | TEMECULA | CA



SOUTH ELEVATION



WEST ELEVATION



FOR MORE INFORMATION, CONTACT:

**NOAH SAMARIN**

P: 909.912.0007 | M: 714.812.1289  
noah.samarin@daumcommercial.com  
CADRE #01755814

**NICK CANTU**

P: 909.652.9054 | M: 714.787.9454  
ncantu@daumcommercial.com  
CADRE #02016719



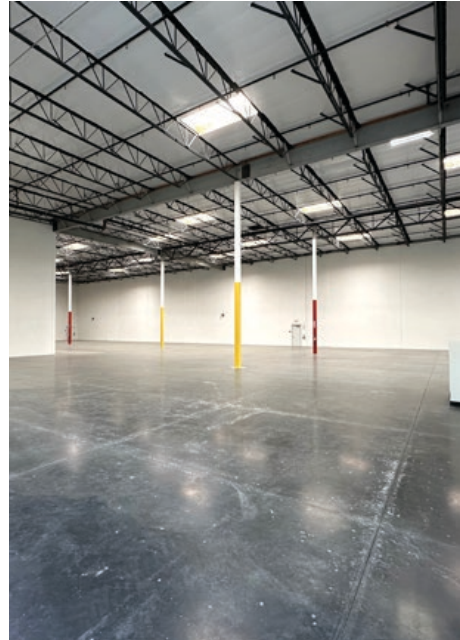
Although all information is furnished regarding for sale, rental or financing is from sources deemed reliable, such information has not been verified and no express representation is made nor is any to be implied as to the accuracy thereof, and it is submitted subject to errors, omissions, changes of price, rental or other conditions, prior sale, lease or financing, or withdrawal without notice. All Maps provided courtesy of Google Maps, Bing Maps, and Google Earth. D/AQ Corp. # 01129558

AVAILABLE FOR SALE

# MS MOUNTAIN VIEW BUSINESS PARK

BLDG.  
**THIRTEEN**

4 2 6 7 2 A V E N I D A A L V A R A D O | T E M E C U L A | C A



FOR MORE INFORMATION, CONTACT:

**NOAH SAMARIN**

P: 909.912.0007 | M: 714.812.1289  
noah.samarin@daumcommercial.com  
CADRE #01755814

**NICK CANTU**

P: 909.652.9054 | M: 714.787.9454  
ncantu@daumcommercial.com  
CADRE #02016719



Although all information is furnished regarding for sale, rental or financing is from sources deemed reliable, such information has not been verified and no express representation is made nor is any to be implied as to the accuracy thereof, and it is submitted subject to errors, omissions, changes of price, rental or other conditions, prior sale, lease or financing, or withdrawal without notice. All Maps provided courtesy of Google Maps, Bing Maps, and Google Earth. D/AQ Corp. # 01129558

AVAILABLE FOR SALE

# MS MOUNTAIN VIEW

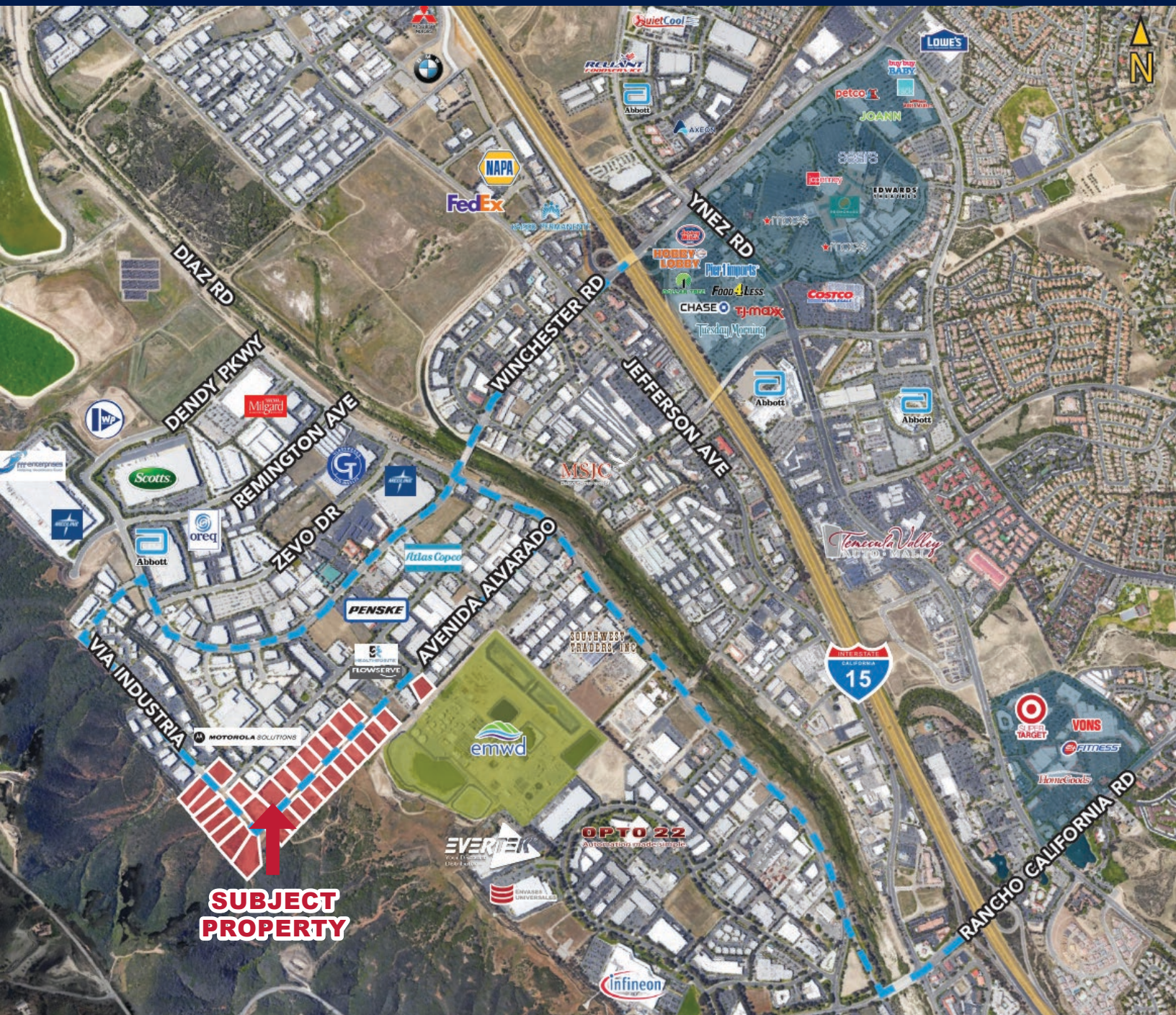
BUSINESS PARK

BLDG. THIRTEEN

# 13

AMENITIES MAP

42672 AVENIDA ALVARADO | TEMECULA | CA



FOR MORE INFORMATION, CONTACT:

**NOAH SAMARIN**

P: 909.912.0007 | M: 714.812.1289  
noah.samarin@daumcommercial.com  
CADRE #01755814

**NICK CANTU**

P: 909.652.9054 | M: 714.787.9454  
ncantu@daumcommercial.com  
CADRE #02016719



Although all information is furnished regarding for sale, rental or financing is from sources deemed reliable, such information has not been verified and no express representation is made nor is any to be implied as to the accuracy thereof, and it is submitted subject to errors, omissions, changes of price, rental or other conditions, prior sale, lease or financing, or withdrawal without notice. All Maps provided courtesy of Google Maps, Bing Maps, and Google Earth. D/AQ Corp. # 01129558