

Newly Renovated Interior and Exterior

CLINTON TOWERS

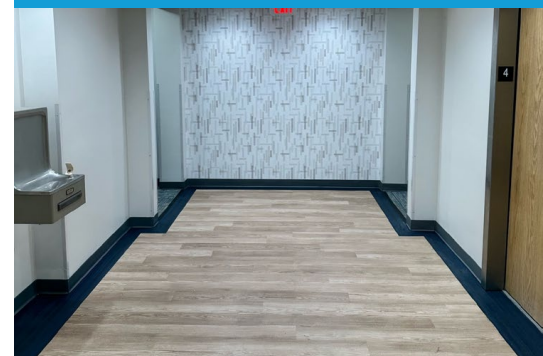


Move In Ready Medical Suites

- 37,694 SF, 4 Story Class B Medical Office Building
- Located less than 2 miles from Southern Maryland Hospital Center
- Ample Free Surface Parking
- Name brand mix of healthcare providers, "built-in" referral source
- Easy access to 1-495, Crain Hwy, and Branch Ave
- Move-in Ready and Build-to-suit opportunities
- Public transit bus stop directly in front of the building
- Building Face and Monument Signage Available

Renovation Highlights

- Exterior Building Staining and Painting
- Patient drop off area and canopy upgrade
- New electronic Tenant directory
- New roof installation
- All common areas improved
- New LED lights
- New wall coverings and flooring throughout
- Common area restroom upgrades



Less than 2 miles
from Southern
Maryland Hospital



Proximity to DMV
Research Community



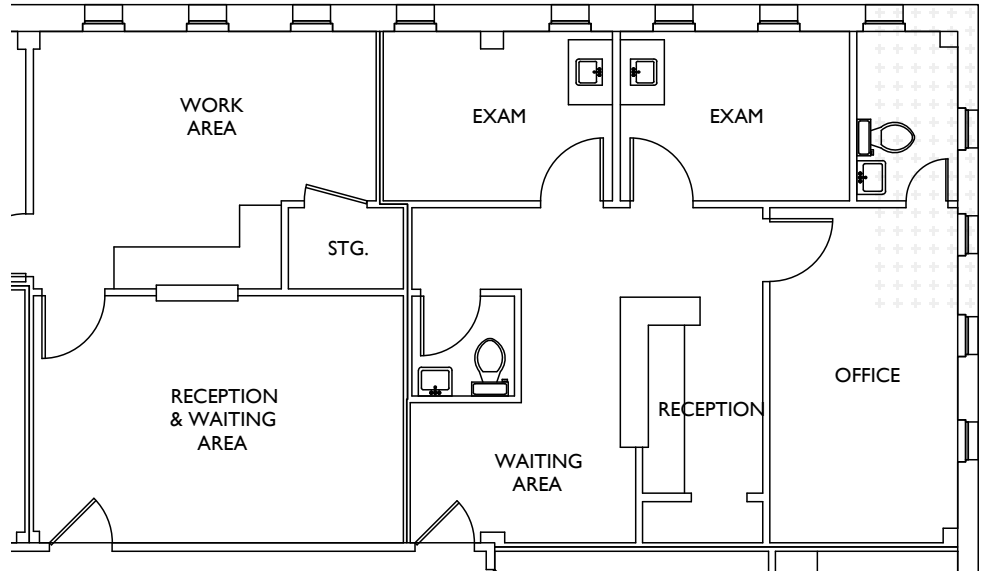
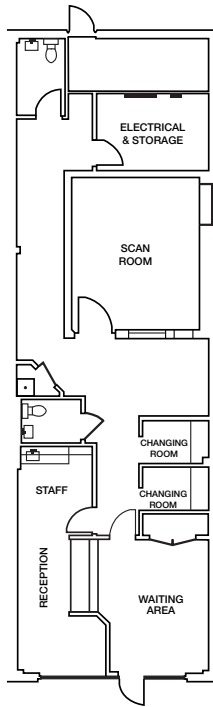
Ample Free
Surface Parking



Physician
Community Built-In
Referral Sources

Suite 106
1,592 SF

Ground floor Suite with direct entrance and signage

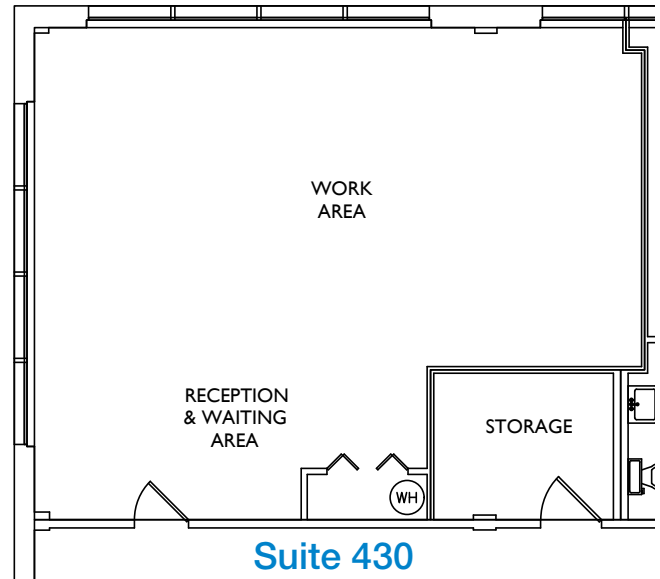
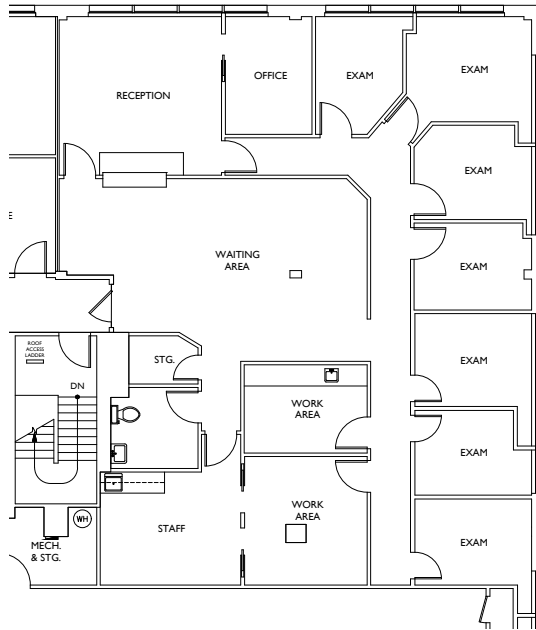


Suite 330
809 SF

Contiguous
upto 1,597 SF

Suite 340
788 SF

Suite 420
2,697 SF



Suite 430
784 SF

For more information or to schedule a property tour, please contact:

CHAZ FEITEL: 240.694.6109 | chazfeitel@hprgrealty.com

LUKE POULOS: 301.395.7108 | lpoulos@hprgrealty.com

HPRGrealty.com

