

LEVINE DENTAL OFFICE

**F
O
R

S
A
L
E**



PROPERTY DETAILS:

PRICE: \$1,500,000

TOTAL BUILDING SF: 7,565 RSF

YEAR BUILT: 2009

LONG TERM TENANTS:
LEVINE DENTAL ASSOCIATES
SISTERS OF THE SORROWFUL MOTHER

ACRES: 1.24

PARKING: 30 SPACES

PARCEL #: 0299996003

\$1,500,000

LEVINE DENTAL OFFICE

8860 N. 60TH STREET
BROWN DEER, WI

CONTACT:
NATHAN GLAISNER
414.331.6827
NGLAISNER@GMAIL.COM

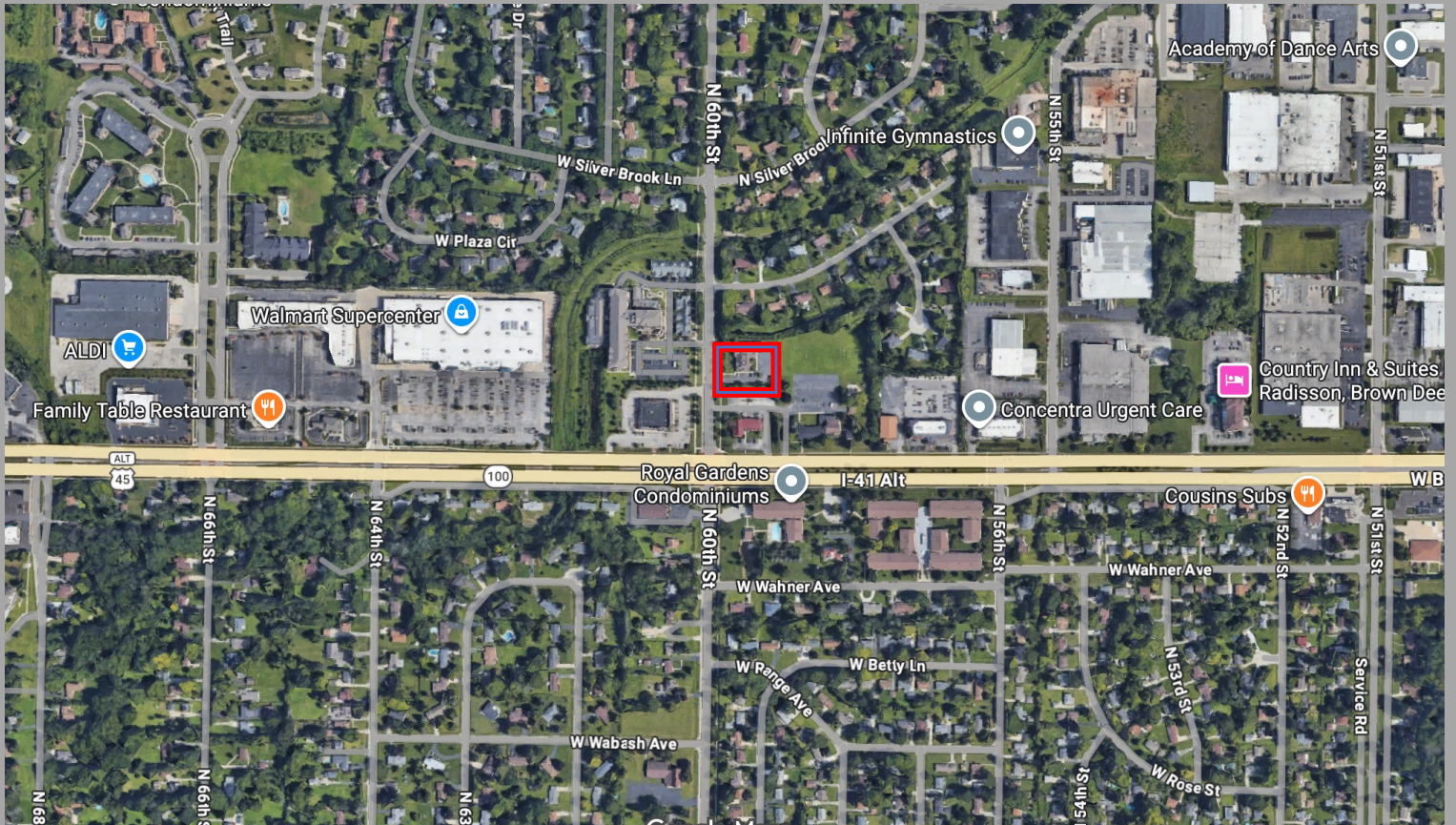
**VERDE
INVESTMENTS LLC**

NATHAN GLAISNER – VERDE INVESTMENTS – NGLAISNER@GMAIL.COM

Information contained herein has been obtained from sources that we deem reliable. We have no reason to doubt its accuracy, but do not guarantee it.

BROWN DEER OFFICE BUILDING

8860 North 60th Street is located near the corner of Brown Deer Road and 60th Street in the Village of Brown Deer (Northern Suburb of Milwaukee County). This area is a vibrant commercial corridor and the property sits across the street from Walgreens and next door to a brand new Starbucks. There are also several other stores within ½ a mile including: Walmart, Aldi, Cousin Subs, Concentra, and the Brown Deer Business Park.



The Village of Brown Deer is roughly 4.4 square miles with a population north of 12,500. It is also home to many companies including the Badger Meter Headquarters, Pick N Save, SkyZone, FIS, ETE Corporate Headquarters, Rogers Memorial, Tapco, Infinite Gymnastics, Jonco, and several more in the Brown Deer Business Park. They just broke ground on a Target being built down the street.

8860 N. 60th ST, BROWN DEER, WI



This beautiful two tenant property was built in 2008 for Levine Dental. The Sisters of the Sorrowful Mother has been a tenant for over 11 years. There are two separate entrances for each tenant. Levine Dental occupies 4,560 SF and the Sisters of the Sorrowful Mother occupy the remaining 3,005 SF. It's beautifully landscaped and has abundant parking with 30 spaces. The property is in amazing shape and has been well maintained over the years. Contact today to tour the property and for more information on Levine Dental and Sisters of the Sorrowful Mother

NATHAN GLAISNER – VERDE INVESTMENTS – NGLAISNER@GMAIL.COM

Information contained herein has been obtained from sources that we deem reliable. We have no reason to doubt its accuracy, but do not guarantee it.

FINANCIALS

RENT ROLL (5/1/2025)

Suite A

Levine Dental	4,560 SF	2008 to 4/30/2029	
	Monthly	Annual	PSF
Rent	\$4,821.03	\$57,852.36	\$12.70
CAM	\$1,710.00	\$20,520.00	\$4.50
Tax	\$1,980.00	\$23,760.00	\$5.22
Total	\$8,511.03	<u>\$102,132.36</u>	\$22.42

Suite B

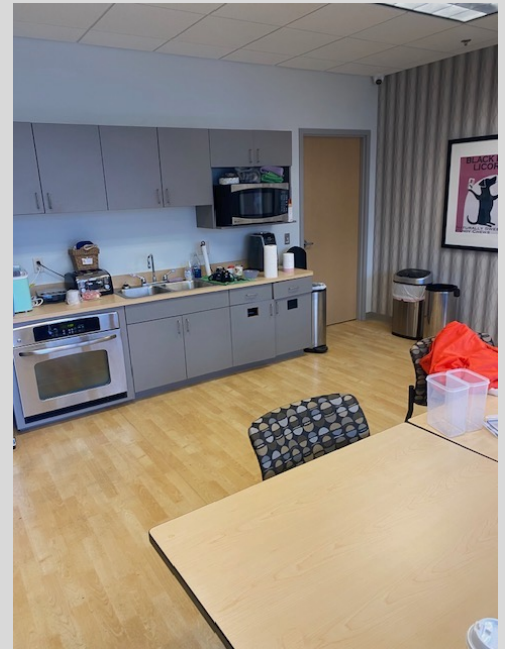
Sisters of the Sorrowful Mother	3,005 SF	2014 to 4/30/2029	
	Monthly	Annual	PSF
Rent	\$2,823.00	\$33,876.00	\$11.26
CAM	\$1,080.00	\$12,960.00	\$4.31
Tax	\$1,315.00	\$15,780.00	\$5.25
Total	\$5,218.00	<u>\$62,616.00</u>	\$20.82

NOI

\$57,852.36
\$33,876.00
\$91,728.36

Tenant pays all utilities, CAM, expenses, taxes, etc. Full financials available upon request.

LEVINE DENTAL OFFICE



DISCLOSURE TO NON-RESIDENTIAL CUSTOMERS

1 Prior to negotiating on your behalf the brokerage firm, or an agent associated with the firm, must provide you the
2 following disclosure statement:

3 **DISCLOSURE TO CUSTOMERS** You are a customer of the brokerage firm (hereinafter Firm). The Firm is either an agent
4 of another party in the transaction or a subagent of another firm that is the agent of another party in the transaction. A
5 broker or a salesperson acting on behalf of the Firm may provide brokerage services to you. Whenever the Firm is
6 providing brokerage services to you, the Firm and its brokers and salespersons (hereinafter Agents) owe you, the
7 customer, the following duties:

- 8 (a) The duty to provide brokerage services to you fairly and honestly.
- 9 (b) The duty to exercise reasonable skill and care in providing brokerage services to you.
- 10 (c) The duty to provide you with accurate information about market conditions within a reasonable time if you request
11 it, unless disclosure of the information is prohibited by law.
- 12 (d) The duty to disclose to you in writing certain Material Adverse Facts about a property, unless disclosure of the
13 information is prohibited by law (see lines 42-51).
- 14 (e) The duty to protect your confidentiality. Unless the law requires it, the Firm and its Agents will not disclose your
15 confidential information or the confidential information of other parties (see lines 23-41).
- 16 (f) The duty to safeguard trust funds and other property held by the Firm or its Agents.
- 17 (g) The duty, when negotiating, to present contract proposals in an objective and unbiased manner and disclose the
18 advantages and disadvantages of the proposals.

19 Please review this information carefully. An Agent of the Firm can answer your questions about brokerage services,
20 but if you need legal advice, tax advice, or a professional home inspection, contact an attorney, tax advisor, or home
21 inspector. This disclosure is required by section 452.135 of the Wisconsin statutes and is for information only. It is a
22 plain-language summary of the duties owed to a customer under section 452.133(1) of the Wisconsin statutes.

23 **CONFIDENTIALITY NOTICE TO CUSTOMERS** The Firm and its Agents will keep confidential any information given to the
24 Firm or its Agents in confidence, or any information obtained by the Firm and its Agents that a reasonable person
25 would want to be kept confidential, unless the information must be disclosed by law or you authorize the Firm to
26 disclose particular information. The Firm and its Agents shall continue to keep the information confidential after the
27 Firm is no longer providing brokerage services to you.

- 28 The following information is required to be disclosed by law:
- 29 1. Material Adverse Facts, as defined in Wis. Stat. § 452.01(5g) (see lines 42-51).
 - 30 2. Any facts known by the Firm or its Agents that contradict any information included in a written inspection
31 report on the property or real estate that is the subject of the transaction.

32 To ensure that the Firm and its Agents are aware of what specific information you consider confidential, you may
33 list that information below (see lines 35-41) or provide that information to the Firm or its Agents by other means. At a
34 later time, you may also provide the Firm or its Agents with other Information you consider to be confidential.

35 **CONFIDENTIAL INFORMATION:** _____
36 _____
37 _____

38 **NON-CONFIDENTIAL INFORMATION** (the following information may be disclosed by the Firm and its Agents): _____
39 _____
40 _____

41 _____ (Insert information you authorize to be disclosed, such as financial qualification information.)

42 **DEFINITION OF MATERIAL ADVERSE FACTS**
43 A "Material Adverse Fact" is defined in Wis. Stat. § 452.01(5g) as an Adverse Fact that a party indicates is of such
44 significance, or that is generally recognized by a competent licensee as being of such significance to a reasonable
45 party, that it affects or would affect the party's decision to enter into a contract or agreement concerning a transaction
46 or affects or would affect the party's decision about the terms of such a contract or agreement.

47 An "Adverse Fact" is defined in Wis. Stat. § 452.01(1e) as a condition or occurrence that a competent licensee
48 generally recognizes will significantly and adversely affect the value of the property, significantly reduce the structural
49 integrity of improvements to real estate, or present a significant health risk to occupants of the property; or information
50 that indicates that a party to a transaction is not able to or does not intend to meet his or her obligations under a
51 contract or agreement made concerning the transaction.

52 **NOTICE ABOUT SEX OFFENDER REGISTRY** You may obtain information about the sex offender registry and persons
53 registered with the registry by contacting the Wisconsin Department of Corrections on the Internet at
54 <http://www.doc.wi.gov> or by telephone at 608-240-5830.