

OFFICE SPACE

5101 River Rd

Bethesda, MD

For Sale or Lease



SALE PRICE REDUCED: \$240 PSF

1,650 SF AVAILABLE - First Floor

Suite Highlights

- Office buildout in great condition – ready to move in or customize for any use
- Option to have the space fully furnished
- Up to 7 reserved parking spaces available

Amenities

- Conference Center/Event Room with the capacity to fit 100 people
- Outdoor Terrace
- Fitness Center
- Aquatic Center

TAKE A VIRTUAL TOUR

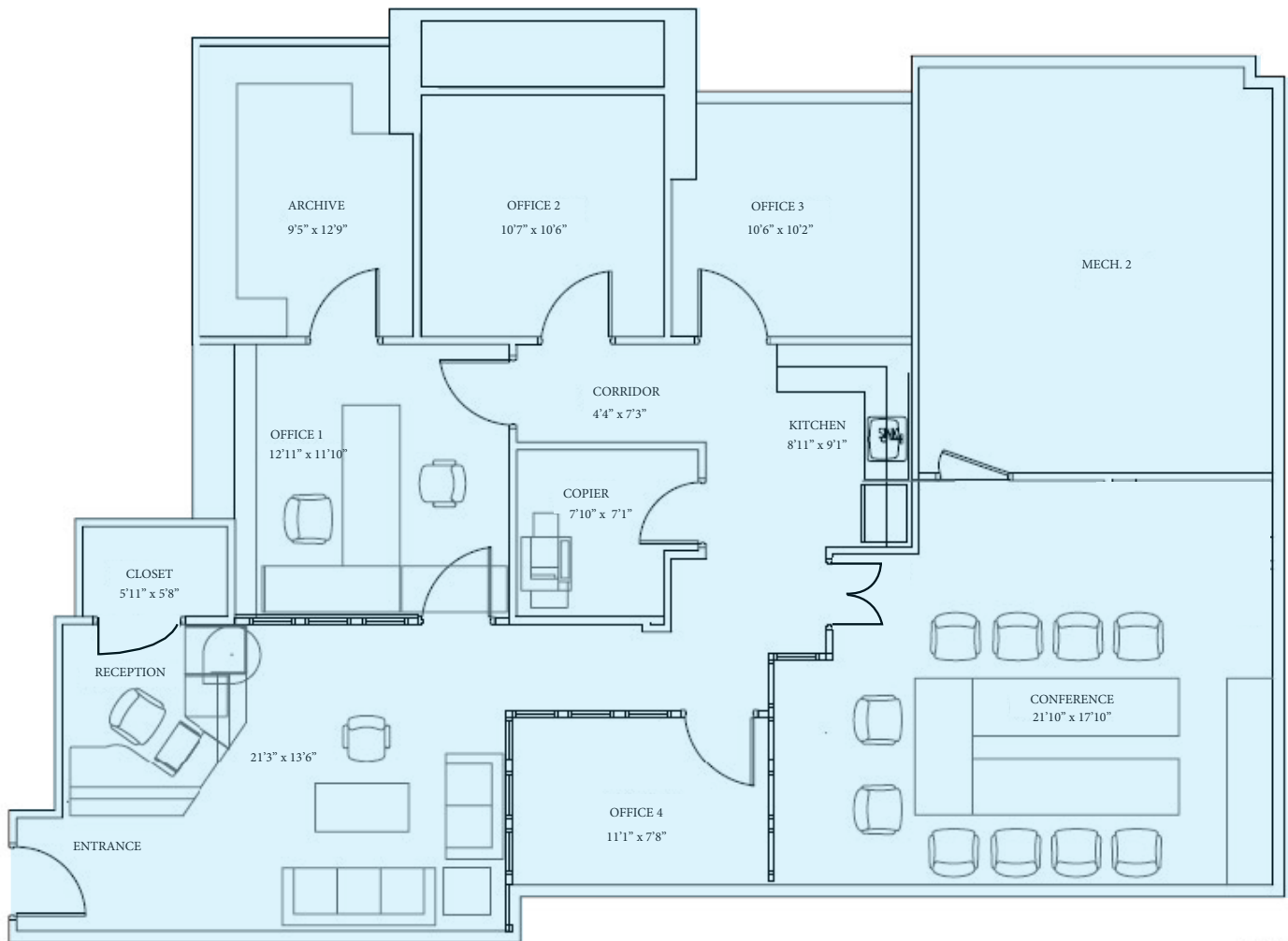


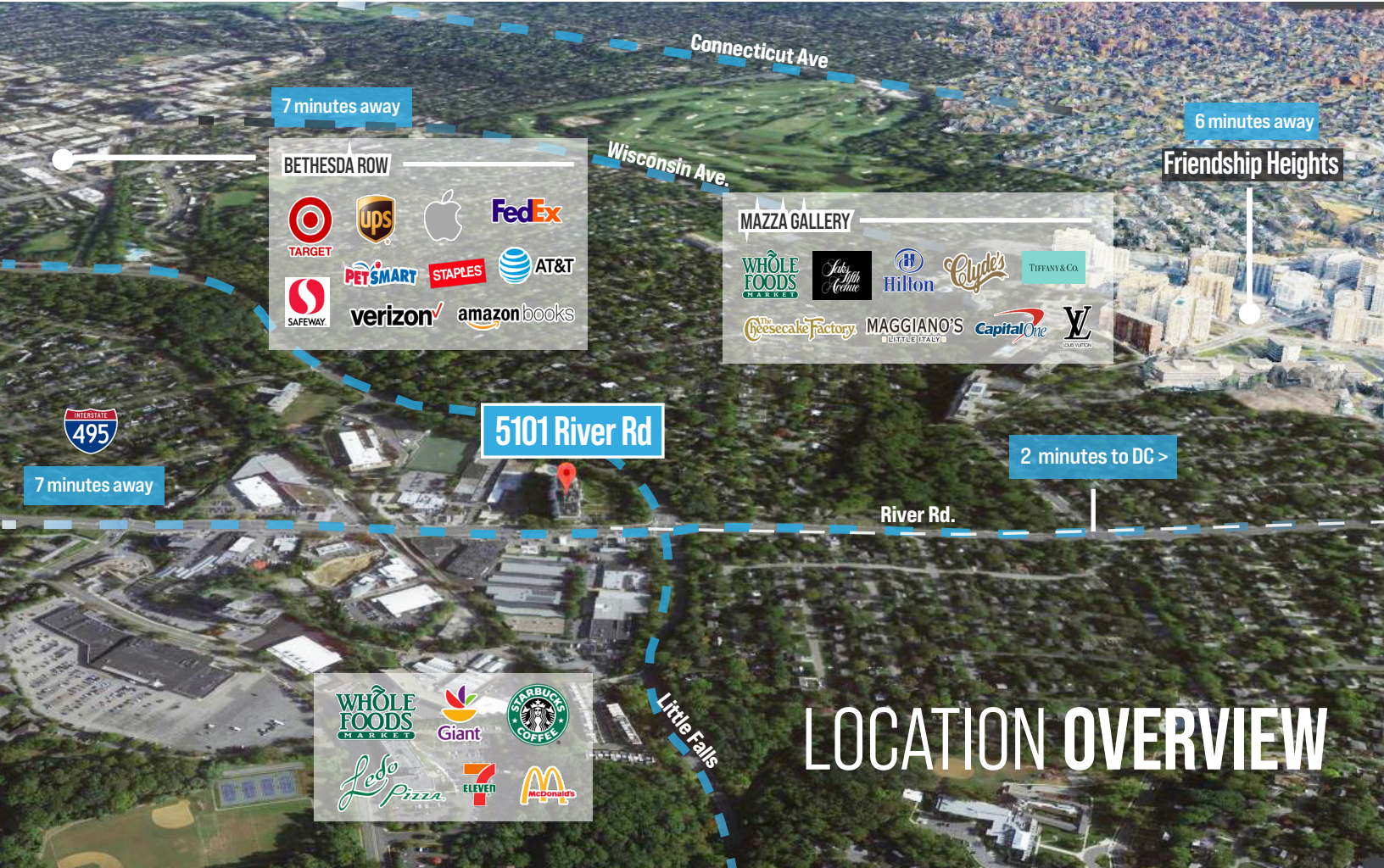
Suite lobby



Building lobby

FIRST FLOOR PLAN - 1,650 SF

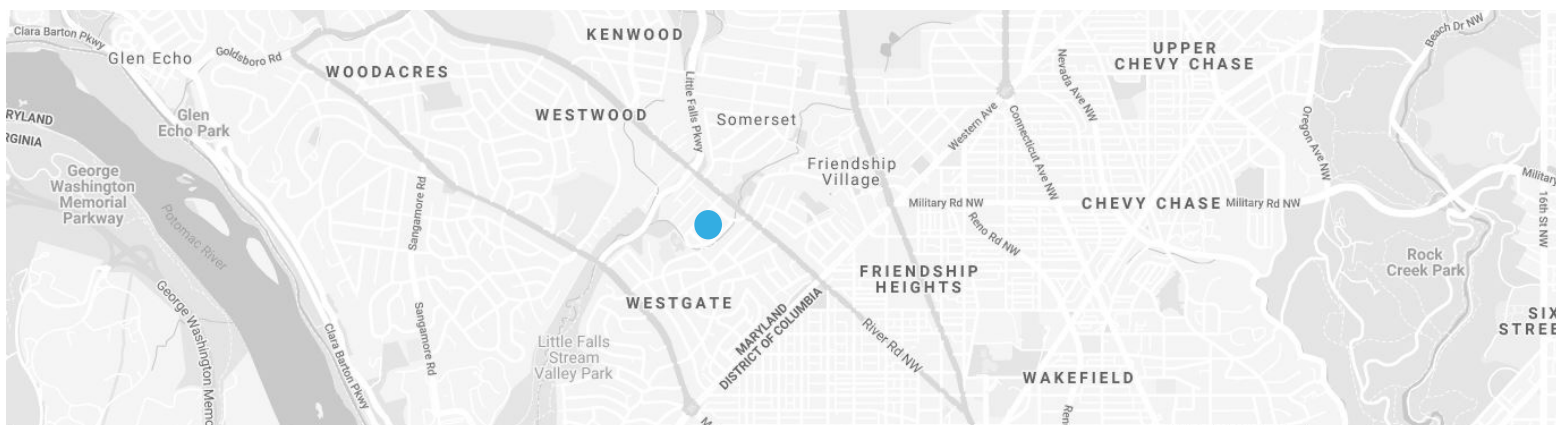




LOCATION OVERVIEW

Site Overview:

- 6 minutes from Friendship Heights
- 7 minutes from Bethesda Row and One Bethesda Center
- 7 minutes to I-495 and 15 mins to I-270
- 2 minutes away from DC with direct access to Downtown, DC



TAKE A VIRTUAL TOUR



Leasing Contacts:

Katie Datin | 203-948-4155
kdatin@scheerpartners.com

Nate Crowe | 703-201-4096
ncrowe@scheerpartners.com

15245 Shady Grove Road
Suite 210 North
Rockville, MD 20850

Scheer Partners
A Reputation for Results

www.scheerpartners.com