



## AVAILABLE FOR LEASE

EXCLUSIVELY REPRESENTED BY  
THE FLYNN COMPANY

PAT GILMORE, SIOR  
PGILMORE@FLYNNCO.COM  
215-561-6565 X 122

MIKE BORSKI, SR.  
MBORSKI@FLYNNCO.COM  
215-561-6565 X 120

THE FLYNN COMPANY  
1621 WOOD ST | PHILADELPHIA, PA 19103  
215-561-6565

**Suite Size**

10,000 SF

**Office**

To Suit

**Loading**

1 Tailgate Door (8' x 10')

**Ceiling Height**

19' Clear

**Lighting**

LED

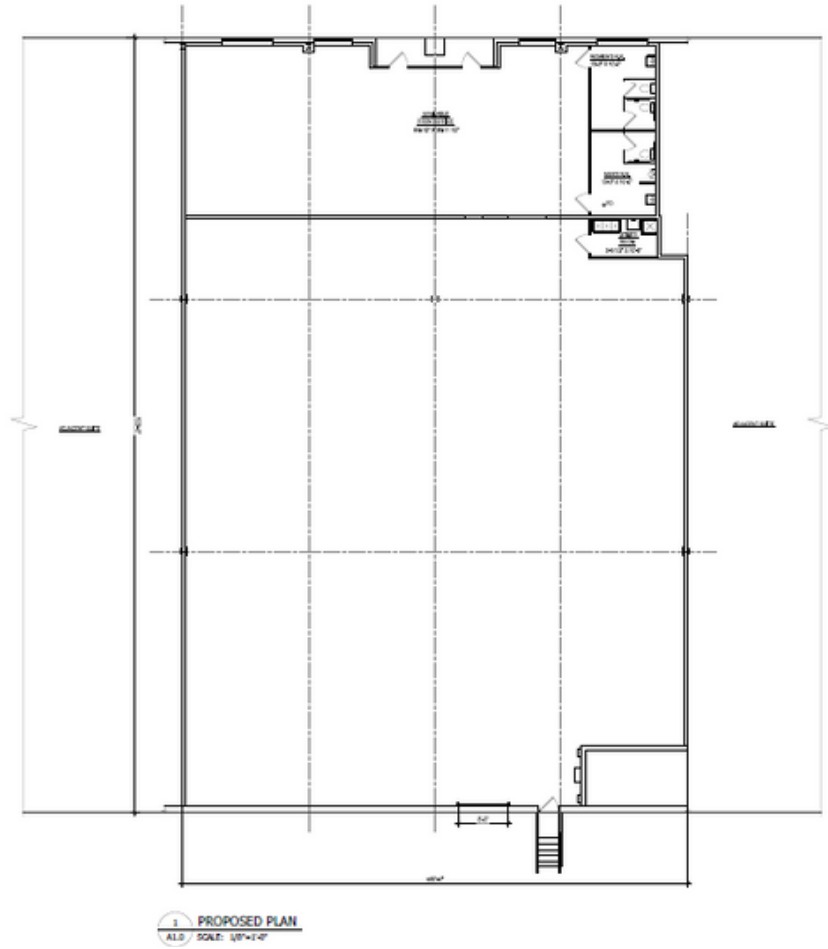
**HVAC**

Fully Air-Conditioned

**Restrooms**

Multi-Stall Men's and Women's

## FLOOR PLAN



## LOCATION

