

FOR LEASE

WASHINGTON HOSPITAL CENTER
106 Irving Street NW, Washington, D.C.



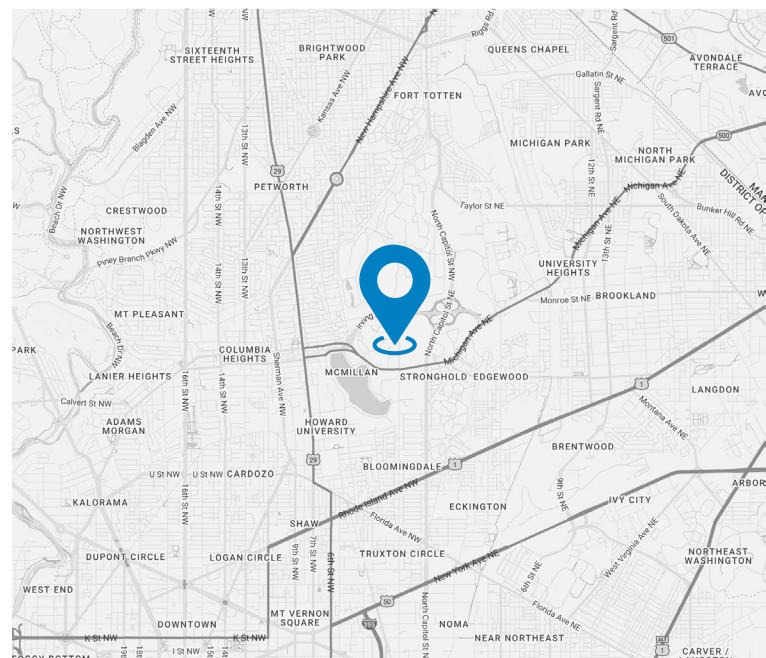
MEDICAL AND DENTAL TENANTS WELCOME

Full Service Leases | Flexible Deal Terms
On-Campus Physician Office Buildings

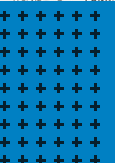


WHC BUILDING HIGHLIGHTS

- + On campus of Washington Hospital Center
- + State of the art interior renovations
- + Ample physician and patient parking
- + Established amenities including Lab, Pharmacy, and Imaging
- + Major hub of MedStar and Children's Hospital
- + Easy access to Georgia Ave, New Hampshire Ave, Michigan Ave, and Rte 1
- + 1.5 miles from Georgia-Petworth and ColumbiaHeights Metro Stations



SARAH FEITEL-SANDERS: 301.366.3879 | sfeitel@hprgrealty.com
LUKE POULOS: 301.395.7108 | lpoulos@hprgrealty.com
HPRGrealty.com

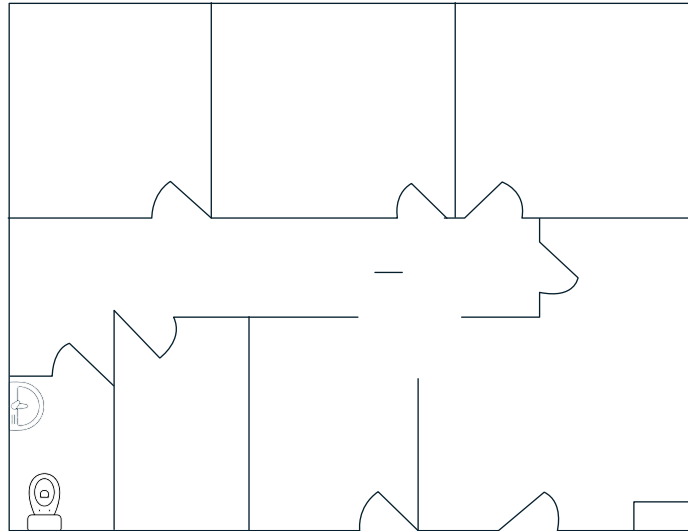


WASHINGTON HOSPITAL CENTER AVAILABLE SPACE

NORTH TOWER

Suite 4000 - 1,275 RSF

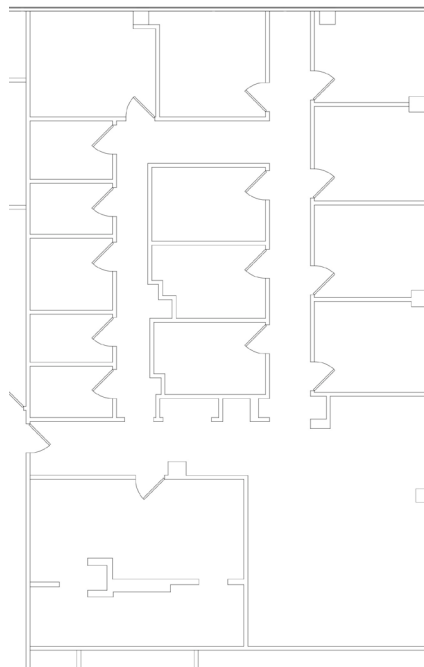
✓ **Available Immediately**



SOUTH TOWER

Suite 321 - 2,746 RSF

✓ **Available Immediately**



For more information or to schedule a property tour, please contact:

SARAH FEITEL-SANDERS: 301.366.3879 | sfeitel@hprgrealty.com

LUKE POULOS: 301.395.7108 | lpoulos@hprgrealty.com

HPRGrealty.com

This document/email has been prepared by HPRG for advertising and general information only. HPRG makes no guarantees, representations or warranties of any kind, expressed or implied, regarding the information including, but not limited to, warranties of content, accuracy and reliability. Any interested party should undertake their own inquiries as to the accuracy of the information. HPRG excludes unequivocally all inferred or implied terms, conditions and warranties arising out of this document and excludes all liability for loss and damages arising there from. This communication is not intended to cause or induce breach of an existing listing agreement.

HPRG HEALTH-PRO+
REALTY GROUP

