



Fully-Furnished, READY TO LEASE

Elevate your workspace at one of Fulton Market's finest loft office destination.

Situated in Chicago's vibrant Fulton Market district, 954 W. Washington offers modern comfort with an industrial touch. Enjoy open spaces filled with sunlight, convenient parking options, and a rooftop that showcases the city's beauty. Experience the perfect blend of innovation and convenience.

CRAIG NADBORNE

312 994 5796

CNADBORNE@BRADFORDALLEN.COM

MICHAEL FLINCHBAUGH

312 741 8121

MFLINCHBAUGH@BRADFORDALLEN.COM

954 W.
WASHINGTON

BA BRADFORD
ALLEN

Building Features



- Lofted brick & timber space
- Variety of ready-to-go furnished suites
- Rooftop terrace
- Parking available

CRAIG NADBORNE

312 994 5796

CNADBORNE@BRADFORDALLEN.COM

MICHAEL FLINCHBAUGH

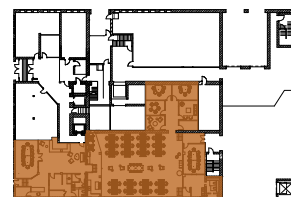
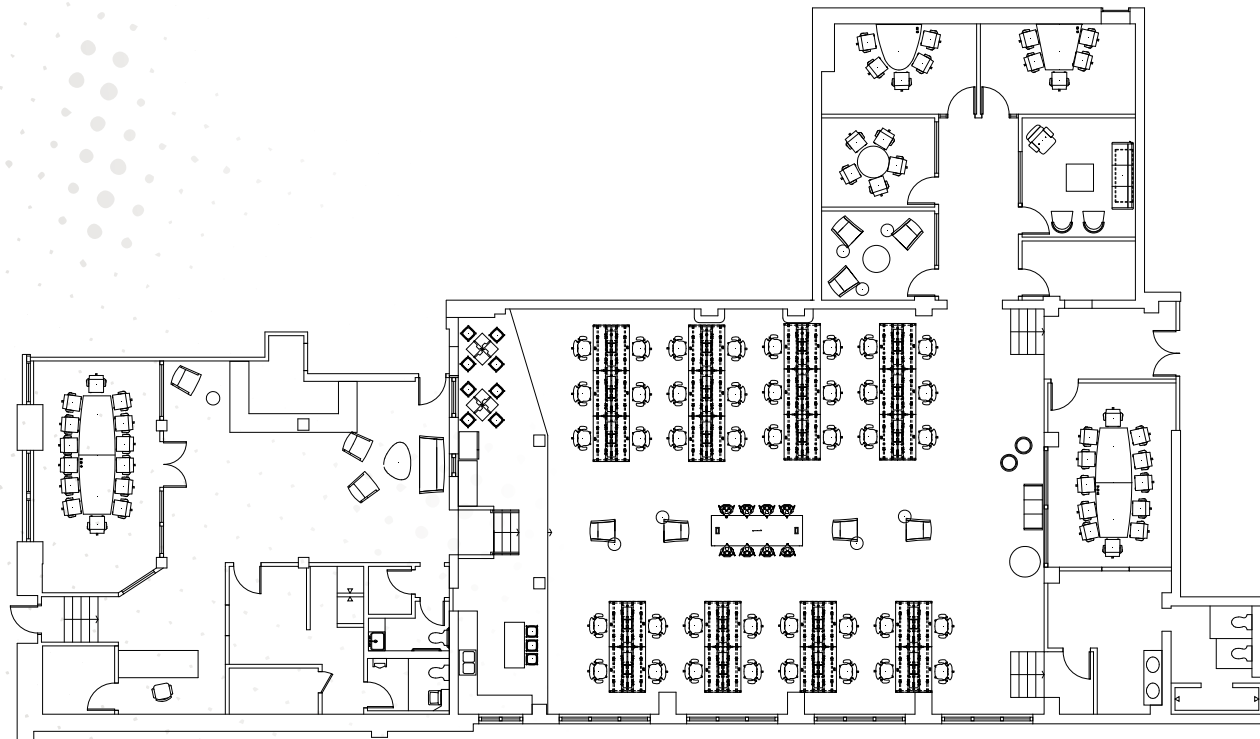
312 741 8121

MFLINCHBAUGH@BRADFORDALLEN.COM

954 W.
WASHINGTON

BA BRADFORD
ALLEN

954 W. WASHINGTON



1st FLOOR

8,500 RSF

SUITE NOTES

- Fully furnished
- 2 large conference rooms with seating for 12-14
- Open seating for 40
- 5 private offices / huddle rooms

[VIEW VIRTUAL TOUR](#)

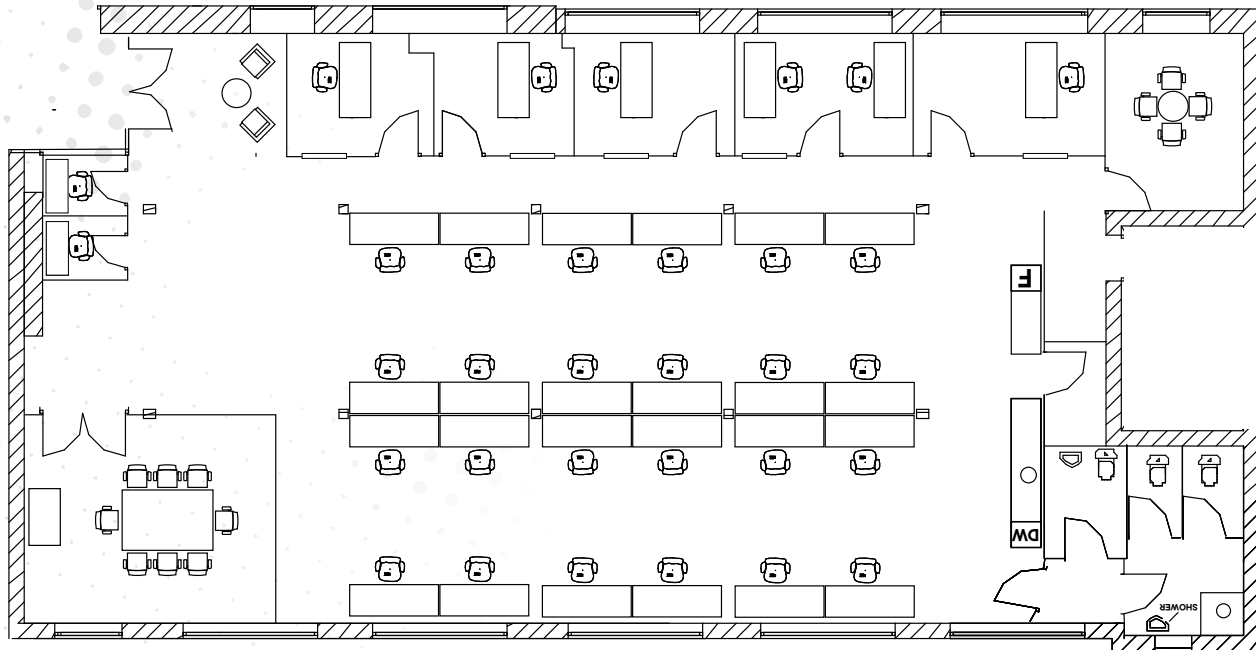
MICHAEL FLINCHBAUGH
312 741 8121
MFLINCHBAUGH@BRADFORDALLEN.COM

CRAIG NADBORNE
312 994 5796
CNADBORNE@BRADFORDALLEN.COM

BA BRADFORD
ALLEN



954 W. WASHINGTON



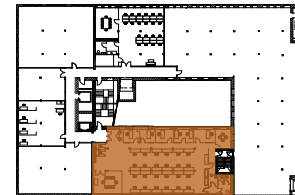
SUITE 500

5,000 RSF

SUITE NOTES

- Fully furnished
- Conference room with seating for 8
- Open seating for 24
- 5-6 private offices
- Huddle room
- Open kitchen
- 2 call rooms
- 2 restrooms in unit

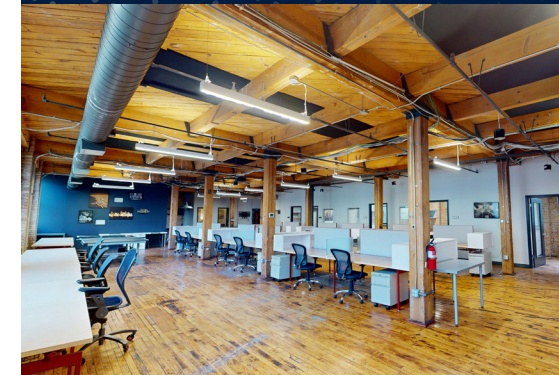
[VIEW VIRTUAL TOUR](#)



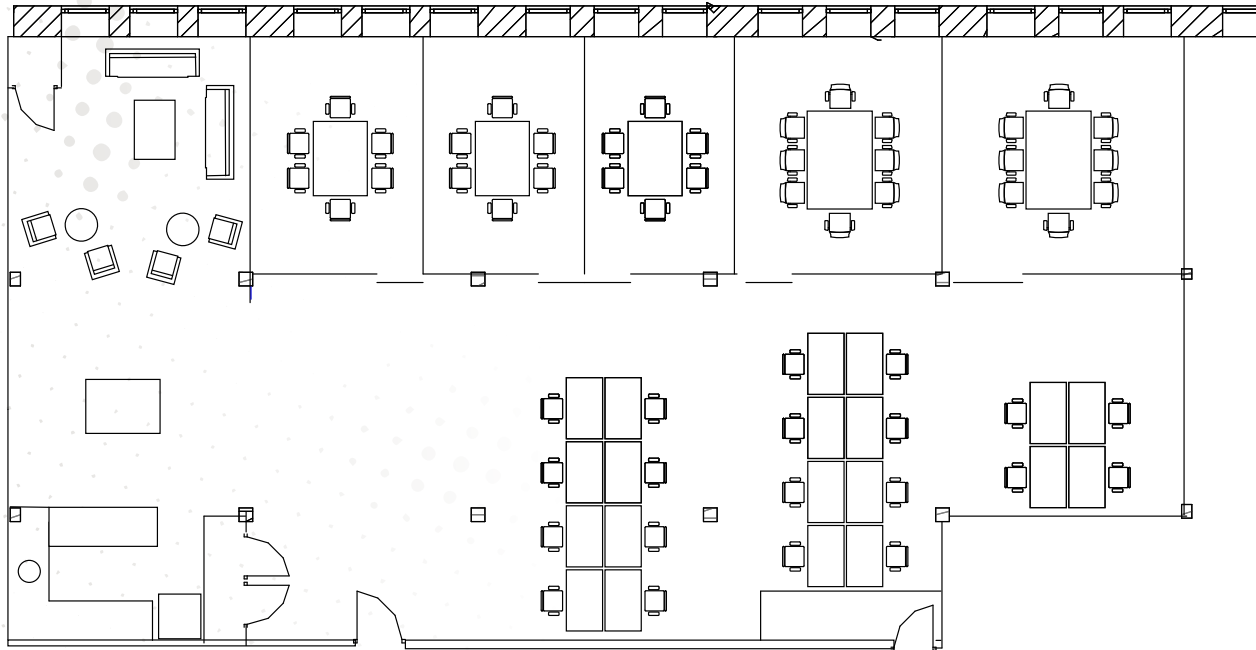
MICHAEL FLINCHBAUGH
312 741 8121
MFLINCHBAUGH@BRADFORDALLEN.COM

CRAIG NADBORNE
312 994 5796
CNADBORNE@BRADFORDALLEN.COM

BA BRADFORD
ALLEN



954 W. WASHINGTON



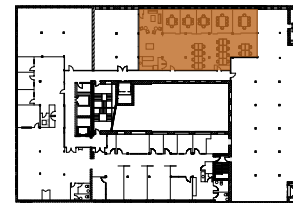
SUITE 730

4,000 RSF

SUITE NOTES

- Fully furnished
- 3 huddle rooms / private offices with seating for 6
- 2 conference rooms with seating for 8
- Open seating for 20
- Open kitchen

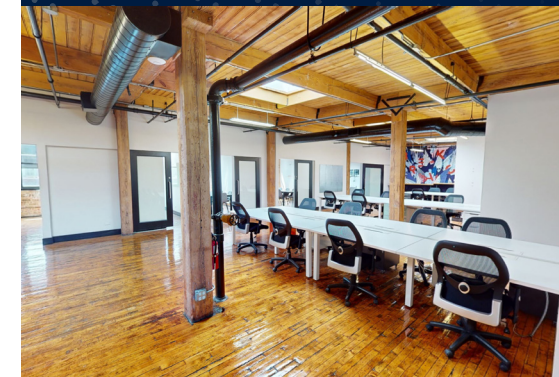
[VIEW VIRTUAL TOUR](#)



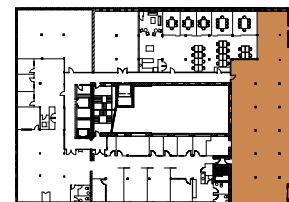
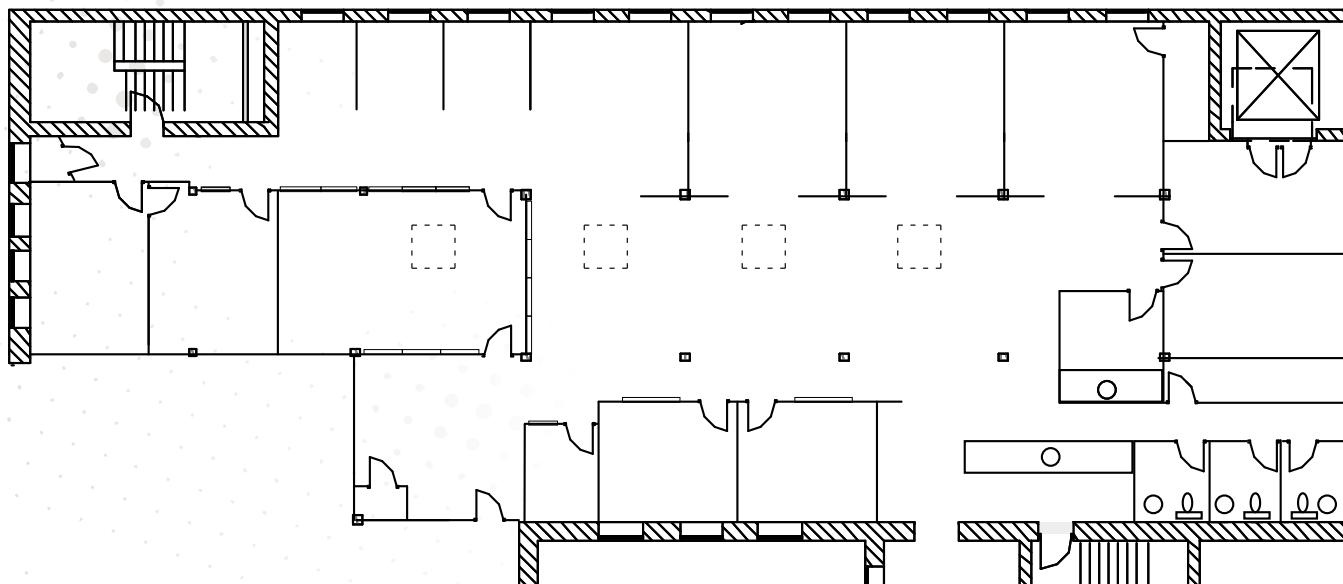
MICHAEL FLINCHBAUGH
312 741 8121
MFLINCHBAUGH@BRADFORDALLEN.COM

CRAIG NADBORNE
312 994 5796
CNADBORNE@BRADFORDALLEN.COM

BA BRADFORD
ALLEN



954 W. WASHINGTON



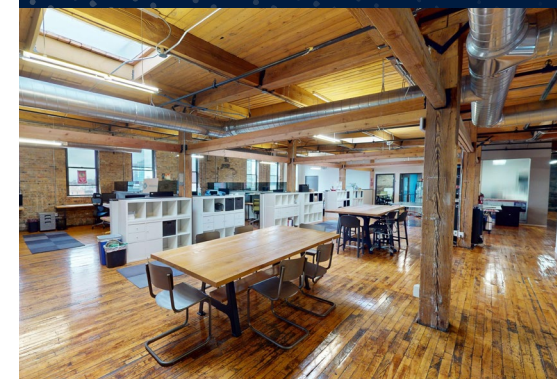
SUITE 750

6,600 RSF

SUITE NOTES

- 6 private offices
- Conference room
- Huddle room
- Open seating
- Open kitchen
- 3 restrooms in unit

[VIEW VIRTUAL TOUR](#)

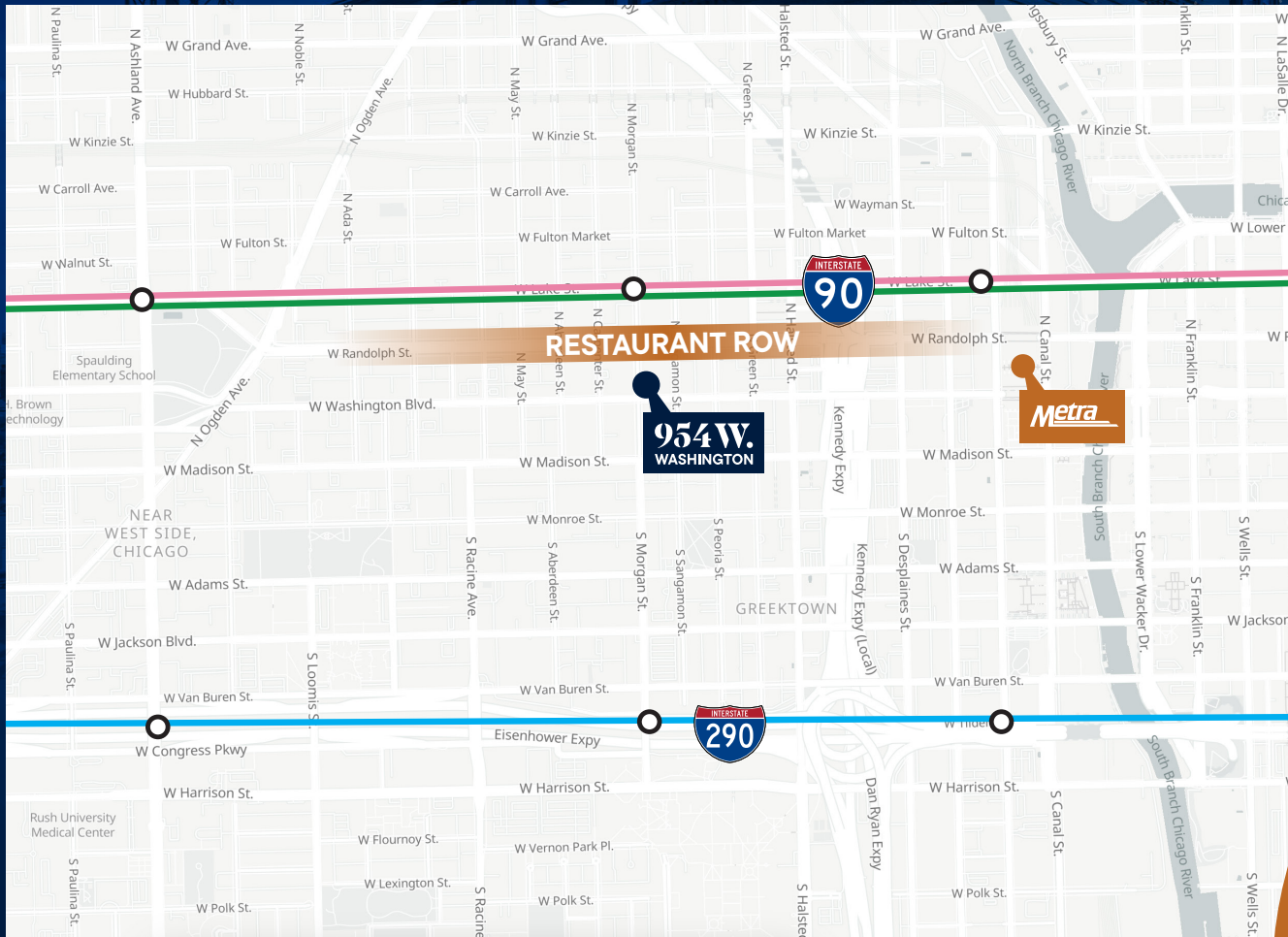


MICHAEL FLINCHBAUGH
312 741 8121
MFLINCHBAUGH@BRADFORDALLEN.COM

CRAIG NADBORNE
312 994 5796
CNADBORNE@BRADFORDALLEN.COM

BA BRADFORD
ALLEN

Area Amenities & Access



- Steps away from the famed Restaurant Row
- 4-minute walk to CTA Green/Pink lines and 12 minutes walk to CTA Blue line
- 2-minute drive to I-190 & I-94
- Parking available

CRAIG NADBORNE

312 994 5796

CNADBORNE@BRADFORDALLEN.COM

MICHAEL FLINCHBAUGH

312 741 8121

MFLINCHBAUGH@BRADFORDALLEN.COM

954 W.
WASHINGTON

BA BRADFORD
ALLEN