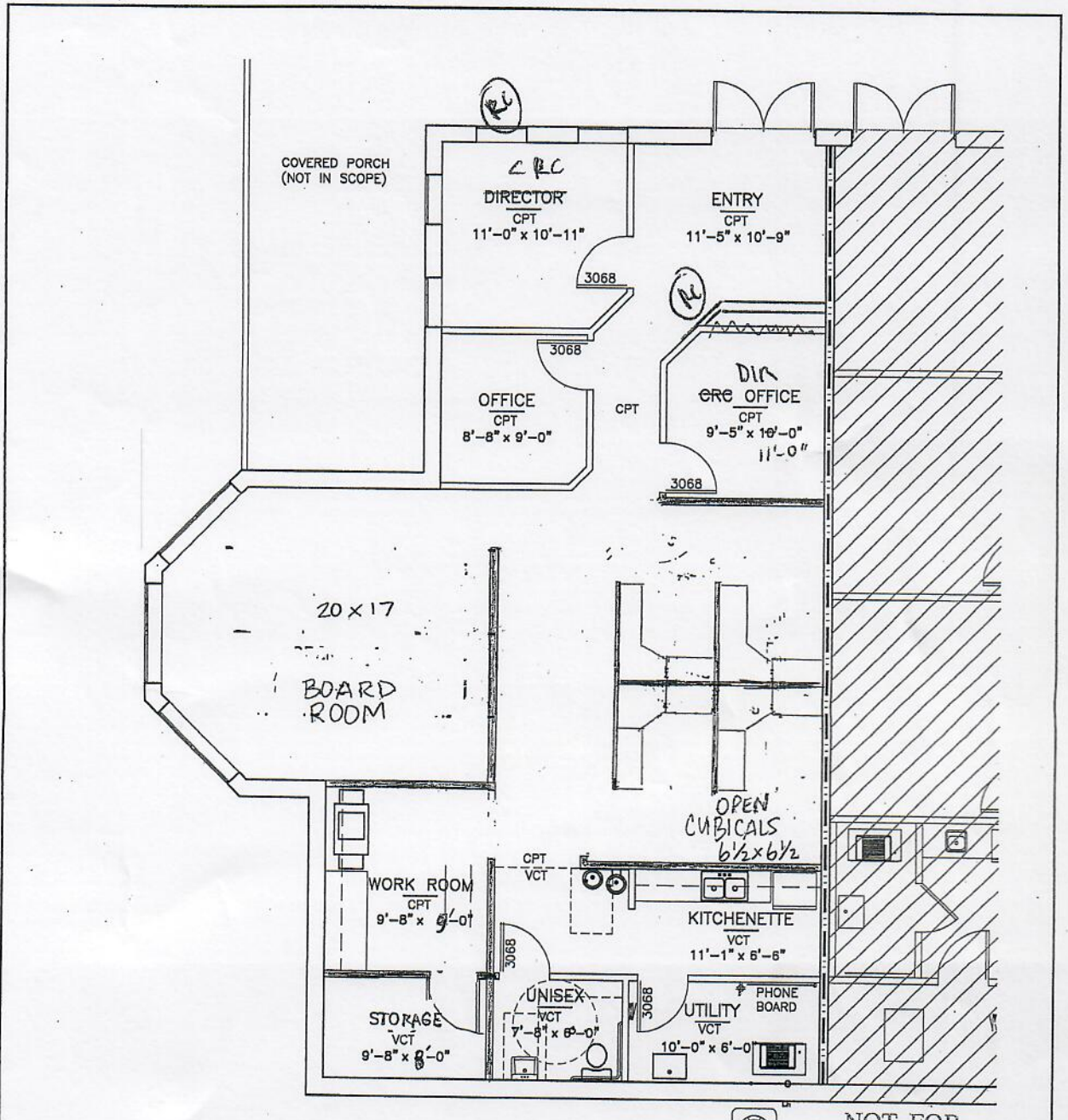


EXHIBIT A




The finishes are as follows.

- Carpet - Amber Green 3842
- Paint - same as engineer's suite
- Base Board - 001 Malibu Sand
- VCT - 57501 nougat

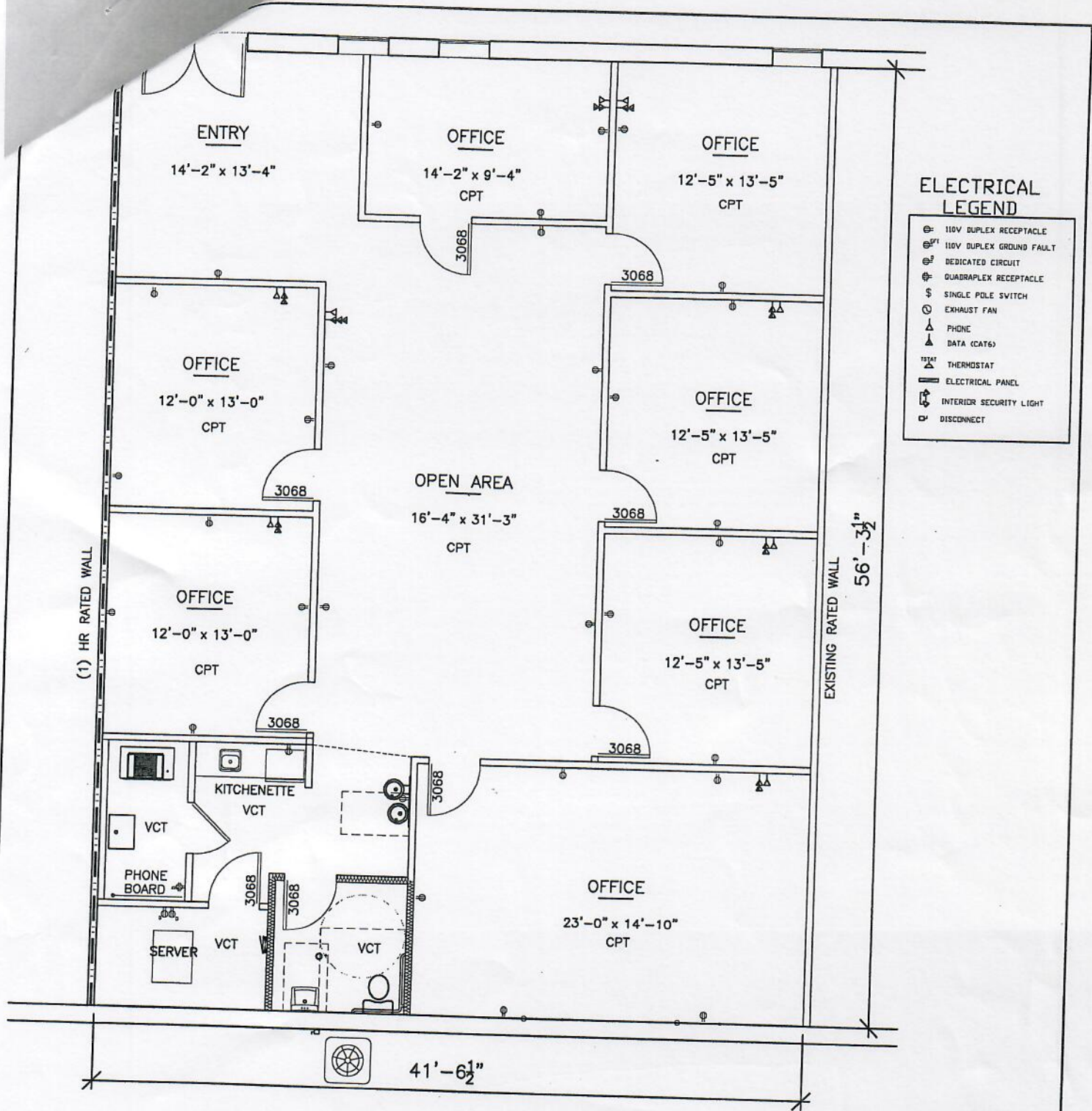


NOT FOR CONSTRUCTION

REVIEW PURPOSE ONLY

 <p>KUR-STAR, INC. GENERAL CONTRACTOR CCG027980 Gerard Verney AR 4930 8150 LONE STAR ROAD, JACKSONVILLE, FLORIDA 32211 TEL (904) 721-6000 FAX (904) 721-7645</p>	<p>PROPOSED FLOOR PLAN FOR AMERICAN CANCER SOCIETY 7175-1 HWY 17, ORANGE PARK, FLA</p>	<p>DATE: 10-28-2010</p>	<p>DRAWN: ECJ</p>
	<p>COMMENTS: ±1815 S.F. AS CALCULATED FROM EXTERIOR WALL FACE TO CENTER OF TENANT FIRE WALL</p>	<p>JOB NO. T.B.D.</p>	<p>CHECKED: GV</p>
		<p>SCALE: 1/8" = 1'</p>	

PLEASE INITIAL
RC



ELECTRICAL LEGEND

- ⊕ 110V DUPLEX RECEPTACLE
- ⊕^{GF} 110V DUPLEX GROUND FAULT
- ⊕^D DEDICATED CIRCUIT
- ⊕^Q QUADRAPLEX RECEPTACLE
- ⊕^S SINGLE POLE SWITCH
- ⊕^F EXHAUST FAN
- ⊕^P PHONE
- ⊕^D DATA (CAT6)
- ⊕^T THERMOSTAT
- ⊕^E ELECTRICAL PANEL
- ⊕^{ISL} INTERIOR SECURITY LIGHT
- ⊕^D DISCONNECT

NOT FOR
CONSTRUCTION
KEY PLAN PORTION
ONLY



KUR-STAR, INC.
GENERAL CONTRACTOR CCG027980

Gerard Vermey
AR 4630

8150 LONE STAR ROAD, JACKSONVILLE, FLORIDA 32211
TEL (904) 721-6088 FAX (904) 721-7845

PROPOSED FLOOR PLAN
7175-2 HWY 17, ORANGE PARK, FLA

COMMENTS:
±2349 S.F.

DATE: 1-20-2010

JOB NO. T.B.D.

SCALE: 1/8" = 1'

DRAWN: ECJ

CHECKED: GV