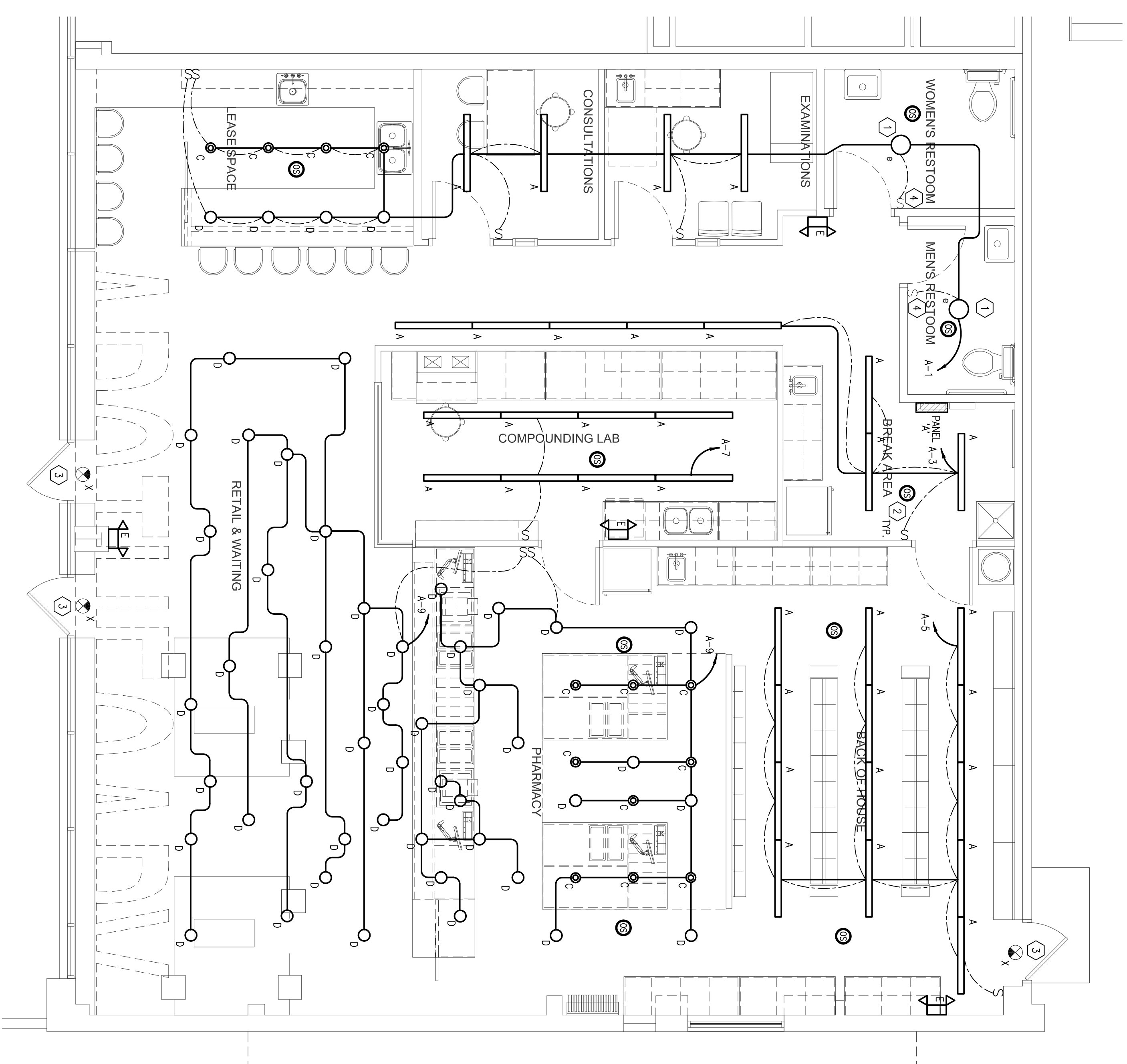




| NO. | DATE | DESCRIPTION |
|-----|------|-------------|
| | | |
| | | |
| | | |
| | | |

| LIGHT FIXTURE SCHEDULE | | | | | | | | | |
|------------------------|--------------|-------------------------|--------------|-----|-------|----------|------|---------------------------------------|--|
| TYPE | MANUFACTURER | CAT # | TYPE | QTY | WATTS | MOUNTING | VOL. | DESCRIPTION | |
| A | DELAVY | ST14154.41Z - 5'FTR | 5W T5HO | 1 | 54 | RECESSED | 120 | 4" PENDANT FIXTURE, IN-LINE CONNECTED | |
| C | DELAVY | V4100.A30 13W | 13W CFL | 1 | 13 | RECESSED | 120 | 4" RECESSED DOWNLIGHT | |
| D | URBAN CHANDY | PENDANT ORDER W/O LAMP | FLUORENT 11W | 1 | 11 | PENDANT | 120 | DECORATIVE PENDANTS, GREY | |
| * | URBAN CHANDY | PENDANT ORDER W/O LAMP | * | * | * | * | * | DECORATIVE PENDANTS, BLACK | |
| * | URBAN CHANDY | PENDANT ORDER W/O LAMP | * | * | * | * | * | DECORATIVE PENDANTS, GREEN | |
| * | URBAN CHANDY | PENDANT ORDER W/O LAMP | * | * | * | * | * | DECORATIVE PENDANTS, BLUE | |
| E | LITHONIA | ELM2 LED | LED | 2 | 12 | WALL | 120 | EMERGENCY FIXTURE | |
| X | LITHONIA | LMW S V 38 120V277 EL N | LED | 2 | 5 | WALL | 120 | THERMOPLASTIC LED EXIT FIXTURE | |

* NOTE: COORDINATE NUMBER OF 'D' FIXTURES OF EACH COLOR WITH OWNER.



LEGEND

- CEILING MOUNTED, RECESSED FIXTURE
- WALL MOUNTED LIGHT FIXTURE
- CEILING MOUNTED FIXTURE W/ BATTERY PACK
- MOUNTED CLEAR SIDE INDICATES DIRECTION OF WASH
- FLUORESCENT FIXTURE, CEILING MOUNTED
- FLUORESCENT FIXTURE, CEILING MOUNTED, WITH BATTERY PACK
- EXIT LIGHT, SINGLE/DOUBLE FACE CEILING MOUNTED WITH ARROWS AS INDICATED IN DRAWINGS
- EXIT LIGHT, WALL MOUNTED, SINGLE/DOUBLE FACE WITH ARROWS AS INDICATED IN DRAWINGS
- EMERGENCY LIGHT, BATTERY TYPE WITH CHARGER
- OCCUPANCY SENSOR - WALL AND CEILING MOUNT RESPECTIVELY
- SINGLE POLE SWITCH
- SWITCH - DOUBLE POLE, 3-WAY OR 4 WAY

GENERAL NOTES:

- 1 COORDINATE MOUNTING HEIGHTS OF ALL LIGHT FIXTURES WITH OWNER.
- 2 ALL L.V. WIRING SHALL BE PLENUM RATED.
- 3 CONNECT ALL EXIT LIGHT FIXTURES AND NIGHT LIGHTS TO NEAREST UNSMOKED HOT WIRE.
- 4 ALL FLUORESCENT LUMINAIRES THAT UTILIZE DOUBLE-ENDED LAMPS AND CONTAIN BALLASTS THAT CAN BE SERVICED IN PLACE SHALL HAVE A DISCONNECTING MEANS EITHER INTERNAL OR EXTERNAL TO EACH LUMINAIRE.
- 5 ALL WIRING SHALL BE COLOR CODED IN COMPLIANCE WITH 2011 NEC AND CITY OF AUSTIN ORDINANCE #20111020-099.

KEYED NOTES: (THIS SHEET ONLY)

- 1 EXISTING LIGHTING TO REMAIN IN REST ROOM.
- 2 DUAL TECHNOLOGY OCCUPANCY SENSOR, LEVITON #OSC SERIES OR EQUAL.
- 3 VERIFY EXISTING EGRESS LIGHTING ON SHELL BUILDING.
- 4 REPLACE EXISTING LIGHT SWITCH & PLATE.