



Avison Young - Raleigh-Durham | 5440 Wade Park Boulevard, Suite 200 | Raleigh, NC 27607

FOR LEASE

400 E Gannon Avenue

Zebulon, NC 27597

**AVISON
YOUNG**

Property highlights

Warehouse space for lease

Offering Summary

Lease rate:	\$9.50/sf, Modified Gross
Available SF:	28,000 sf
Clear height:	11'6" to beam, 15' to roof
Dock-high doors:	One
Sprinklered:	Yes
Offices:	Four
Restrooms:	Two
Zoning:	HI

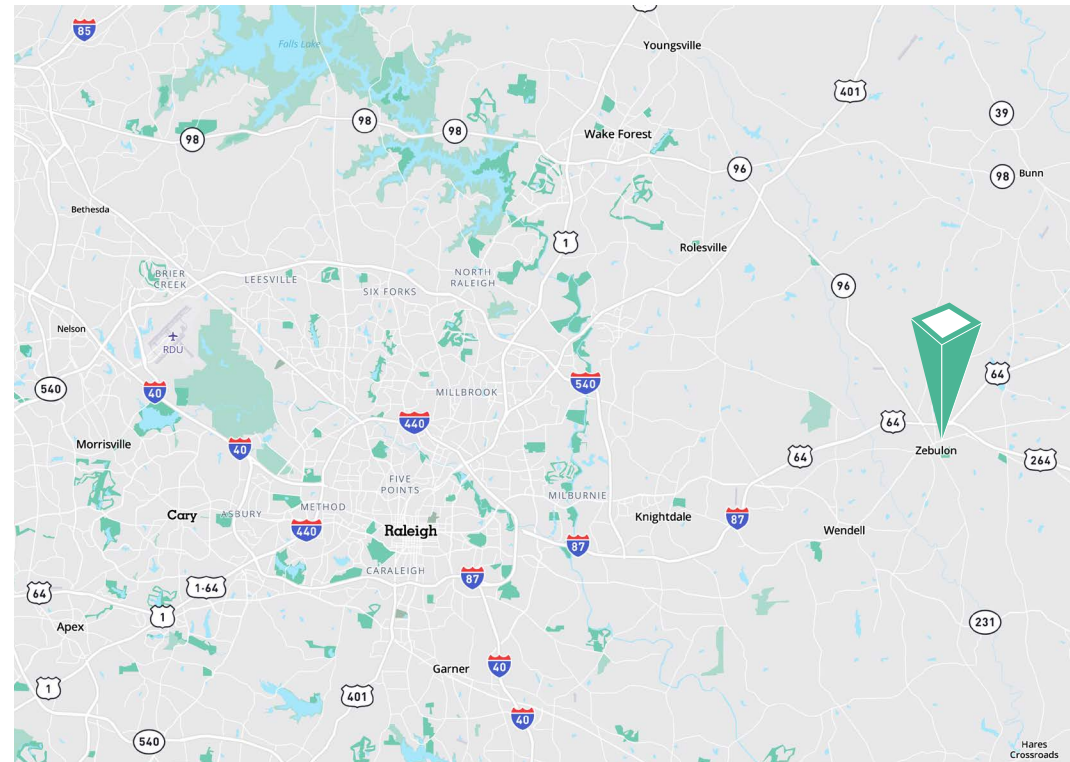


Interstates & Highways

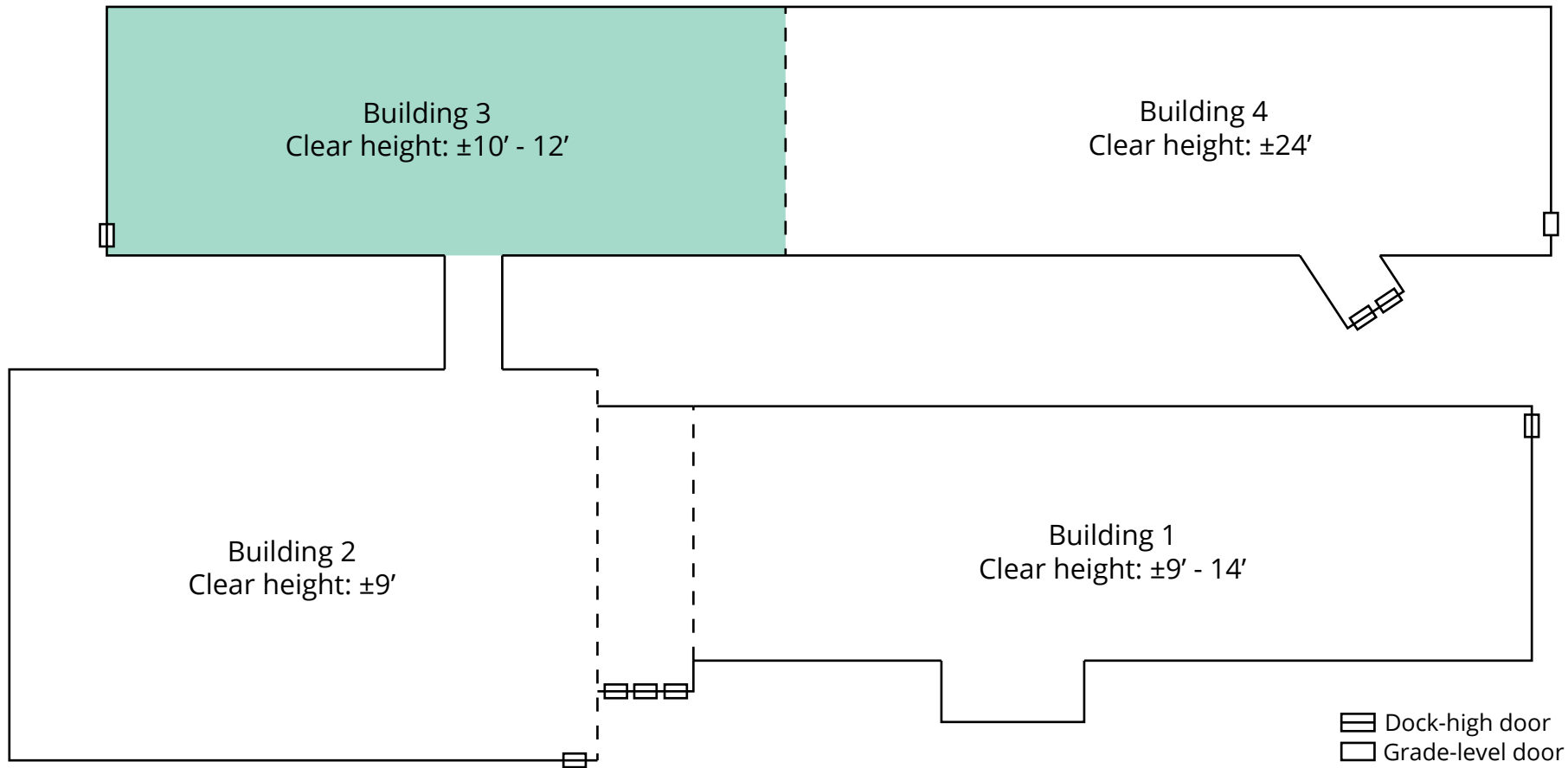
US-264	Two miles
US-64	Three miles
Interstate 87	Eight miles
Interstate 540	14 miles
Interstate 95	18 miles

Nearby Cities & Airports

Raleigh	24 miles
Durham	46 miles
RDU International Airport	35 miles
Greensboro	99 miles
Piedmont Triad International Airport	18 miles



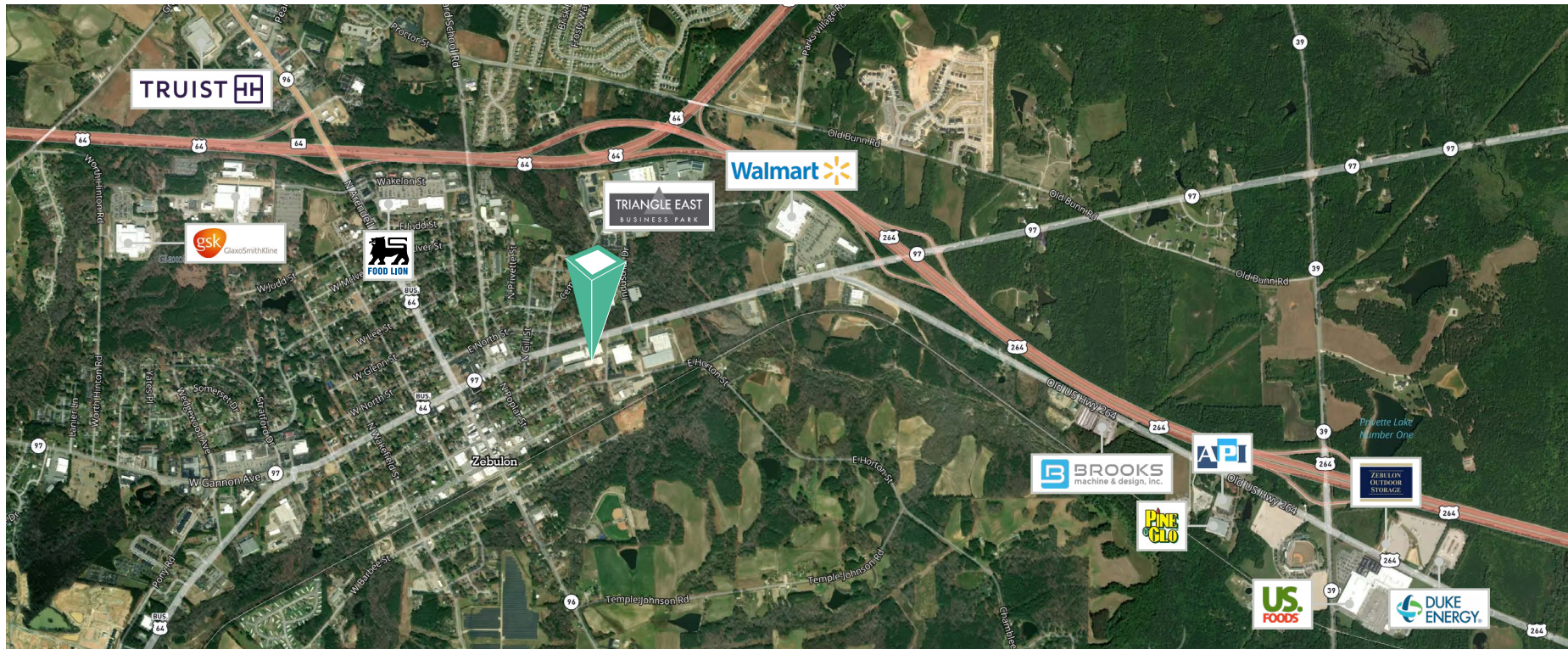
Floor plan





Interior







Avison Young - Raleigh-Durham
5440 Wade Park Boulevard, Suite 200 | Raleigh, NC 27607

© 2026. Avison Young - Raleigh-Durham. Information contained herein was obtained from sources deemed reliable and, while thought to be correct, have not been verified. Avison Young - Raleigh-Durham does not guarantee the accuracy or completeness of the information presented, nor assumes any responsibility or liability for any errors or omissions therein.

Let's talk.

Trey Navo
Senior Vice President
919 441 0711
tony.reckker@avisonyoung.com

Josh Points
Senior Vice President
512 589 8301
josh.points@avisonyoung.com

