

220 N. Smith Street
Suite 440
220 N. Smith Street, Palatine, IL 60067



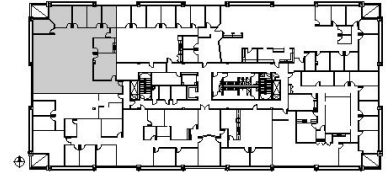
DETAILS

Square Feet: 3,860 S.F.
Net Rent: \$14.00/S.F.
OP. Expense: \$8.15/S.F.
Tax: \$6.75/S.F.
Gross Rent: \$28.90/S.F.

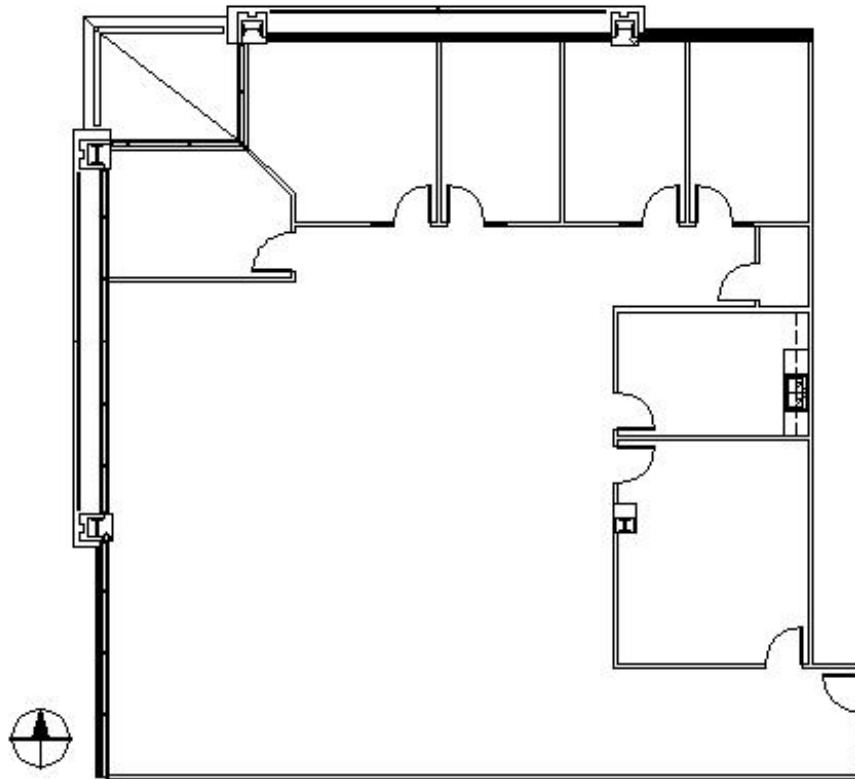
SUITE FEATURES

- Available May 2025
- 5 Private Offices
- 1 Conference Room
- Kitchen with Cabinetry
- Large Open Area
- Adjacent to Palatine Metra Station
- Covered Parking for All Tenants
- Walking Distance to Restaurants & Shops
- Class A Building with Grand Lobby Entrance

Fourth FLOOR PLAN



SPACE PLAN



HAMILTON PARTNERS - Sponsoring Broker

Brian Lunt

✉ blunt@hpre.com

P 847-459-2249

F 847-459-8918