

# St. Paul Business Center East

Variety of Small Suites Available

1983-2025 Sloan Place  
Maplewood, MN



## Contact Us

**TOM BENNETT**

Senior Vice President  
+1 952 924 4897

[tom.bennett@cbre.com](mailto:tom.bennett@cbre.com)

**JP MALONEY**

Senior Associate  
+1 612 336 4288

[jp.maloney@cbre.com](mailto:jp.maloney@cbre.com)

**PARKER RICKERT**

Associate  
+1 612 845 8022

[parker.rickert@cbre.com](mailto:parker.rickert@cbre.com)



## Overview

St. Paul Business Center East is a three (3) building complex minutes away from Downtown St. Paul with easy access and visibility to I-35E.

St. Paul Business Center East can accommodate a wide variety of users.

### **Total Building SF**

+ 26,297 SF

### **Parking**

+ 4.18/1,000

### **Year Built**

+ 1985

### **Clear Height**

+ 12'

### **Power**

+ 800 Amps, 3 Phase, 480 Volt

### **Suite 24**

+ 3,755 SF

+ All Warehouse

### **Suite 16**

+ 2,800 SF Total

+ 1,400 SF Office

+ 1,400 SF Warehouse

+ Drive-In Door

### **Suite 111**

+ 3,800 SF

+ All Office

### **Suite 15**

+ 2,100 SF

+ All Office

### **2025 Est. Taxes**

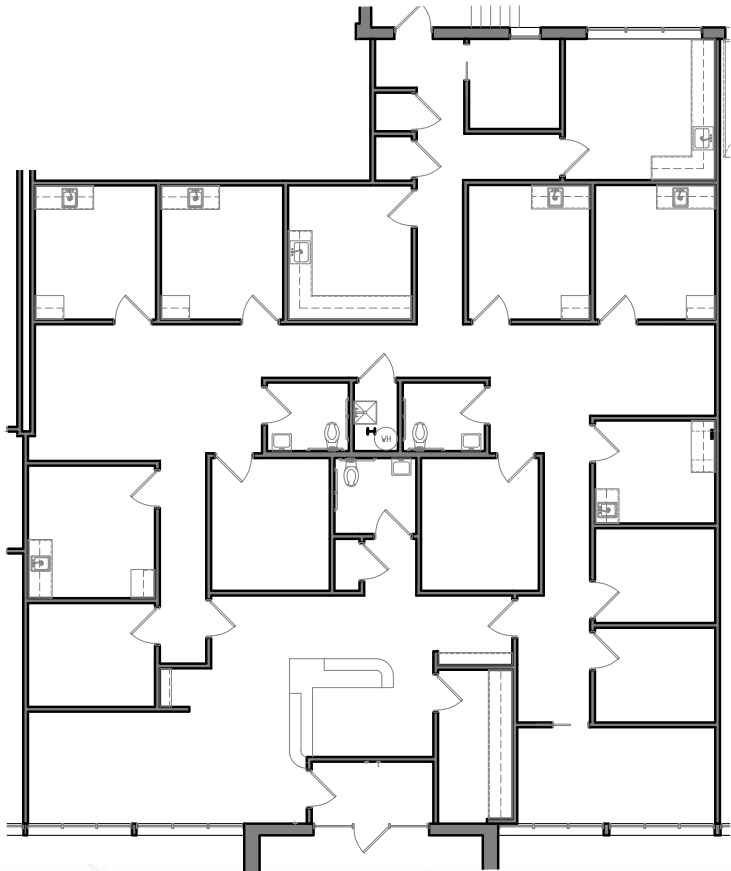
+ \$2.98 CAM

\$4.00 RE Tax

\$6.90 PSF Total

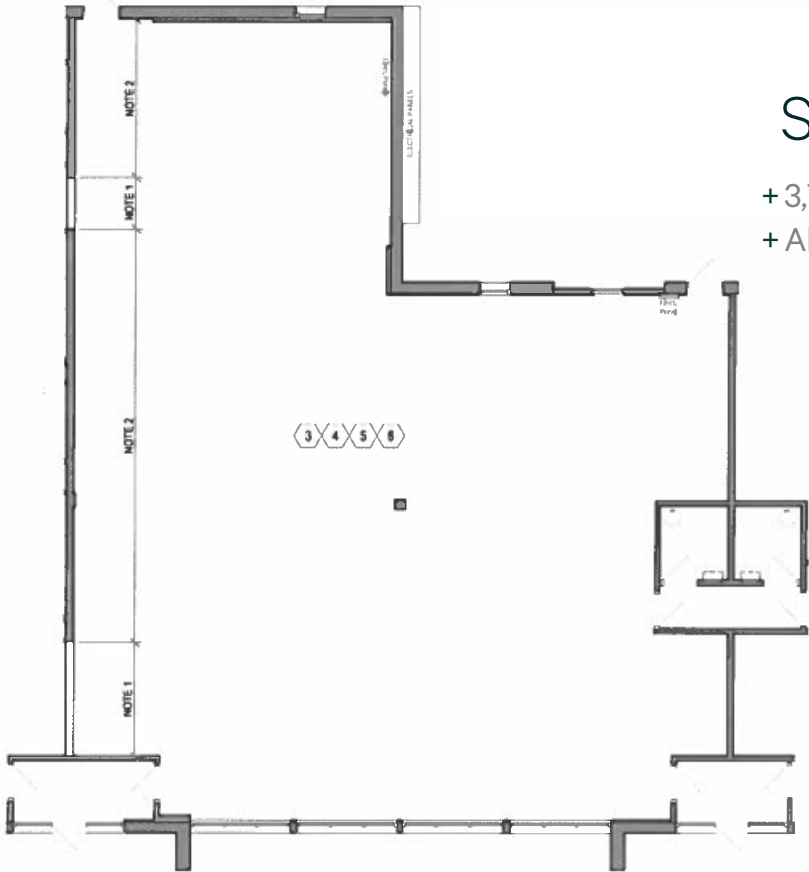
### **Net Rental Rates**

+ Negotiable



Suite 111

- +3,800 SF
- + All Office

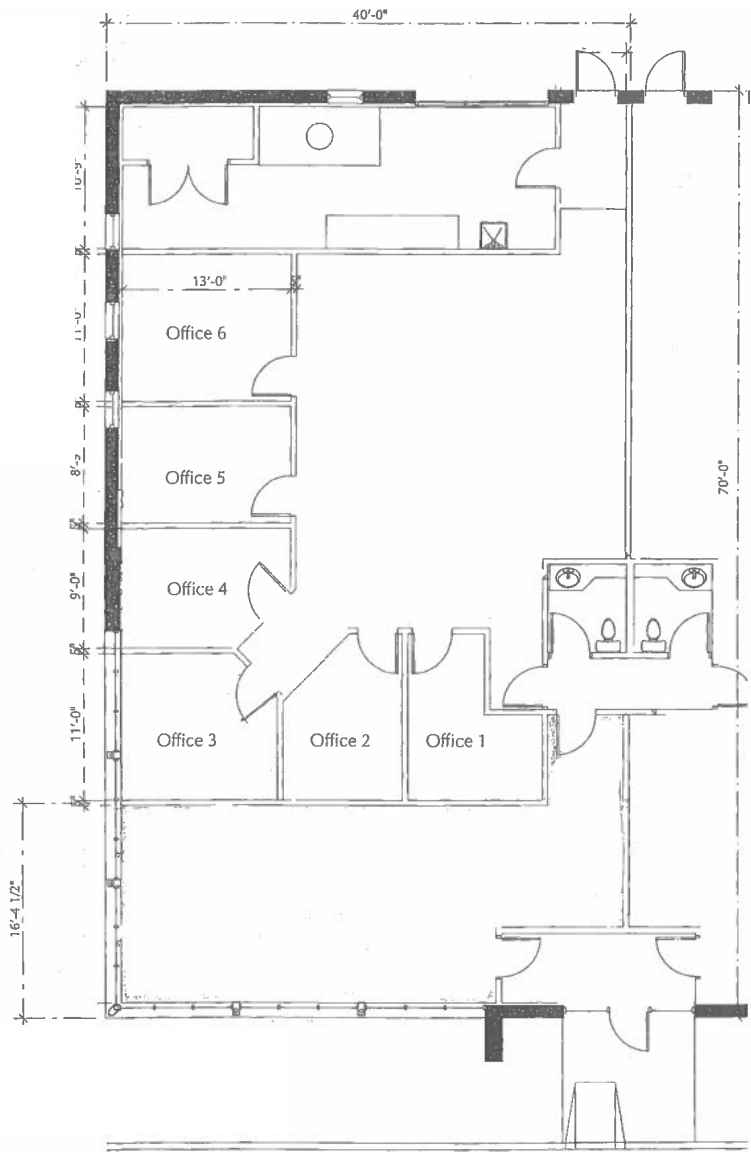


Suite 24

- +3,755 SF
- + All Warehouse

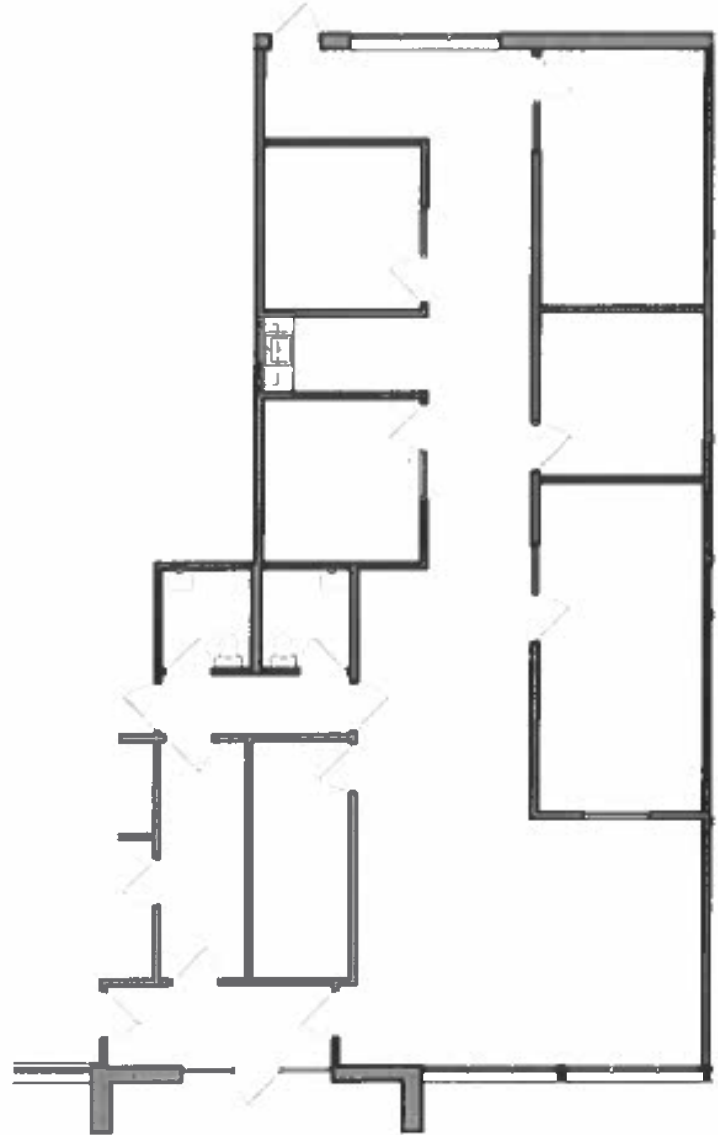
Suite 16

- + 2,800 SF Total
- + 1,400 SF Warehouse
- + 1,400 SF Office
- + 1 Drive-In Door



Suite 15

- + 2,100 SF
- + All Office







## Contact Us

### TOM BENNETT

Senior Vice President

+1 952 924 4897

[tom.bennett@cbre.com](mailto:tom.bennett@cbre.com)

### JP MALONEY

Senior Associate

+1 612 336 4288

[jp.maloney@cbre.com](mailto:jp.maloney@cbre.com)

### PARKER RICKERT

Associate

+1 612 845 8022

[parker.rickert@cbre.com](mailto:parker.rickert@cbre.com)



BIYNAH INDUSTRIAL PARTNERS

# CBRE