

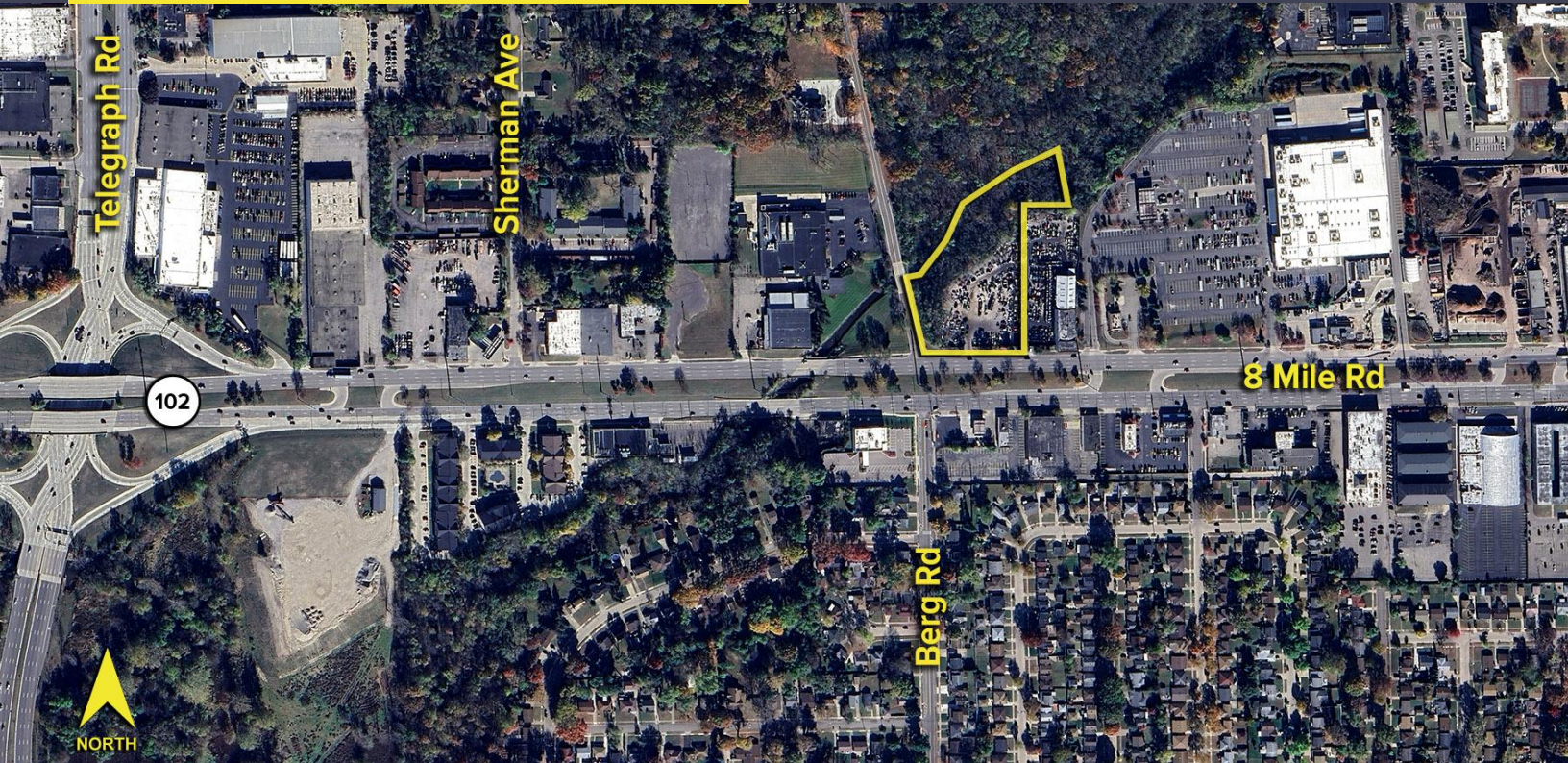
BERG ROAD SOUTHFIELD, MICHIGAN

LAND FOR SALE
3.68 Acres Available



**SIGNATURE
ASSOCIATES**
KNOW SIGNATURE | KNOW RESULTS

ZONED INDUSTRIAL



PROPERTY FEATURES

- 3.68 acres available
- One of the only remaining land parcels in Southfield - Zoned Industrial
- 8 Mile Road frontage
- Secured, fenced in yard in a prime logistical location
- Sale Price: \$795,000 (\$216,032.61/acre)



For more information, please contact:

PETER VANDERKAAY
(248) 359 3837
pvanderkaay@signatureassociates.com

RICHARD PIFER
(248) 799 3158
rpifer@signatureassociates.com

SIGNATURE ASSOCIATES
One Towne Square, Suite 1200
Southfield, MI 48076
www.signatureassociates.com