

[VIEW PROPERTY WEBSITE HERE](#)

3214 Queen Palm

3214 QUEEN PALM DRIVE | TAMPA, FL 33619



Colliers

LEASE OR ACQUISITION OPPORTUNITY | 80,575 SF VACANT BUILDING IN INFILL, EAST TAMPA

Opportunity Highlights

THE REAL ESTATE

- **RARE VACANT ACQUISITION OPPORTUNITY IN EAST TAMPA**

The Property will be vacant come May 31, 2026, allowing a buyer to acquire a clean, functional industrial building in an established infill submarket with flexibility to attract either an owner user or an investor with a re-tenanting, value add approach.

- **FLEXIBLE TWO SUITE CONFIGURATION OR FULL BUILDING OCCUPANCY**

Configured as two suites of approximately 20,000 SF and 60,000 SF, each with its own office buildout, shipping and receiving office, loading, dedicated entrance, and auto parking, supporting single tenant occupancy, dual tenant income, or a part owner user part landlord strategy.

- **RECENT CAPITAL IMPROVEMENTS REDUCE NEAR TERM CAPITAL EXPOSURE**

Current Ownership has invested approximately \$1.5 million in recent interior and exterior capital improvements, positioning the building in strong condition for near term occupancy or lease.

- **ABILITY TO SECURE ENTIRE PERIMETER FOR SINGLE TENANT USE**

The truck court can easily be secured to provide perimeter control, a desirable feature for many industrial users seeking enhanced security, controlled access, or fleet operations, while also increasing overall marketability to logistics and service oriented tenants.



THE INFILL LOCATION

- **IMMEDIATE ACCESS TO I-4 AND I-75**

The property offers direct connectivity to both I-4 and I-75 full interchanges, located approximately 2.2 miles from I-4 and 1.5 miles from I-75, enabling efficient east-west and north-south distribution across the Tampa Bay region, Central Florida, and the broader Southeast, with convenient access to Port Tampa Bay and major population centers.

- **SABAL PARK LOCATION WITH PROVEN INDUSTRIAL TENANCY**

Located within the Sabal Park industrial pocket of East Tampa, an established submarket home to nationally recognized tenants and institutional landlords, benefiting from durable tenant demand and long term industrial fundamentals.

- **CONTINUED INDUSTRIAL RENT GROWTH IN EAST TAMPA**

East Tampa industrial rents have demonstrated sustained growth driven by limited infill supply, proximity to Port Tampa Bay and regional transportation corridors, and continued tenant demand. In place rents in the submarket have increased approximately 20.3% annually over the past 6 years, with current asking rents averaging approximately \$13.56 per SF NNN, providing a favorable backdrop for re-tenanting and mark to market opportunities.

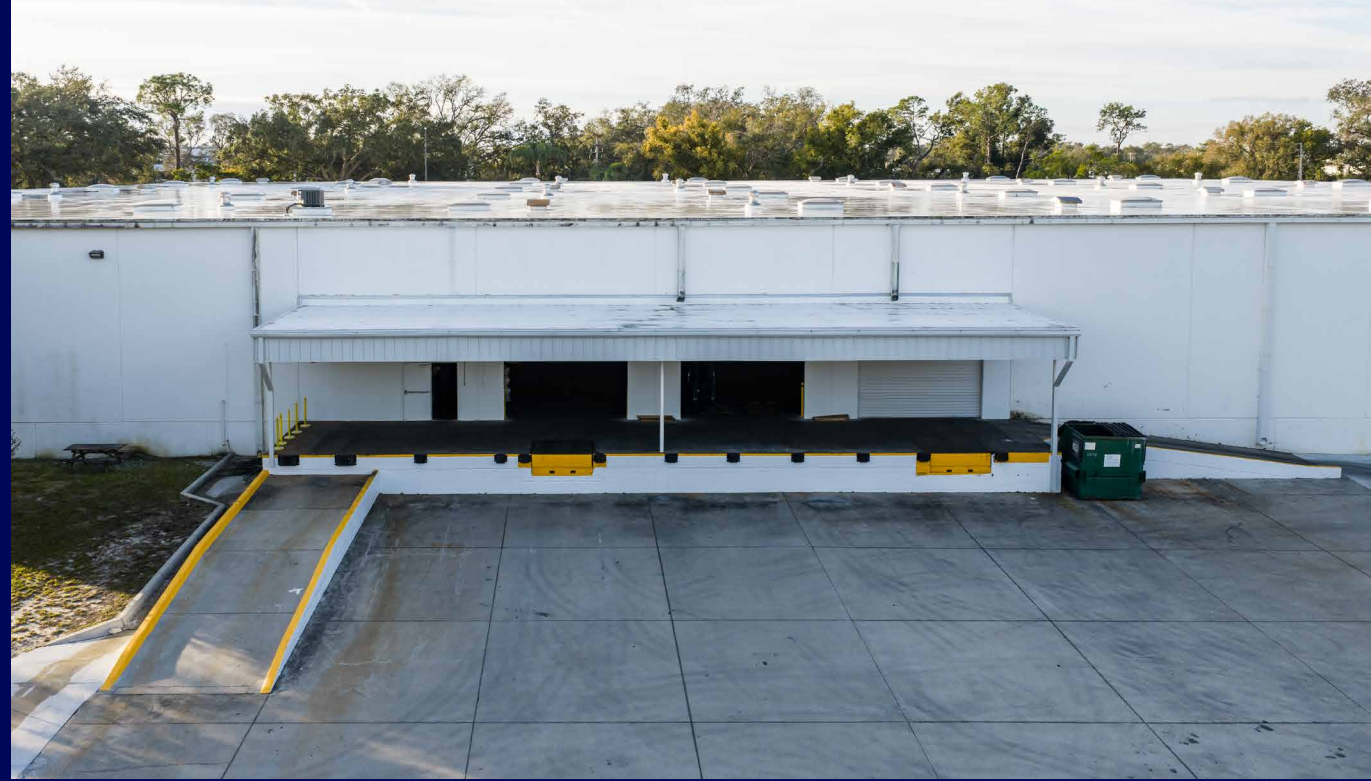
- **TAMPA BAY RANKED AMONG THE TOP INDUSTRIAL INVESTMENT MARKETS NATIONALLY**

Tampa Bay is consistently ranked among the top three most desirable markets for industrial investment, supported by strong population growth, diversified employment drivers, port infrastructure, and sustained tenant demand, resulting in deep capital liquidity and long term institutional interest.



Property Information

ADDRESS	3214 Queen Palm Dr, Tampa, FL 33619
COUNTY	Hillsborough
MARKET SUBMARKET	Tampa Bay East Tampa
PARCEL ID	U072920289000000000130
SITE SIZE (ACRES)	5.47
BUILDING SIZE (SF)	80,575
TENANCY	Vacant as of 5/31/2026
SUITES	Two, Connected with One 14' Warehouse Passthrough
TYPE	Rear Load
YEAR BUILT (RENOVATED)	1981 (2025)
CONSTRUCTION TYPE	Masonry
LOADING	Dock High, Drive-in & Van High (See Following Page)
WAREHOUSE LIGHTING	LED
AUTO PARKING	27 Striped Spaces
SPRINKLER SYSTEM	Wet System Throughout
CONSTRUCTION TYPE	Masonry
ROOF	TPO (±2015)
TRUCK COURT	Concrete (Repaved in 2025)
ZONING	Manufacturing (M)
ELECTRIC	TECO
WATER & SEWER	City of Tampa



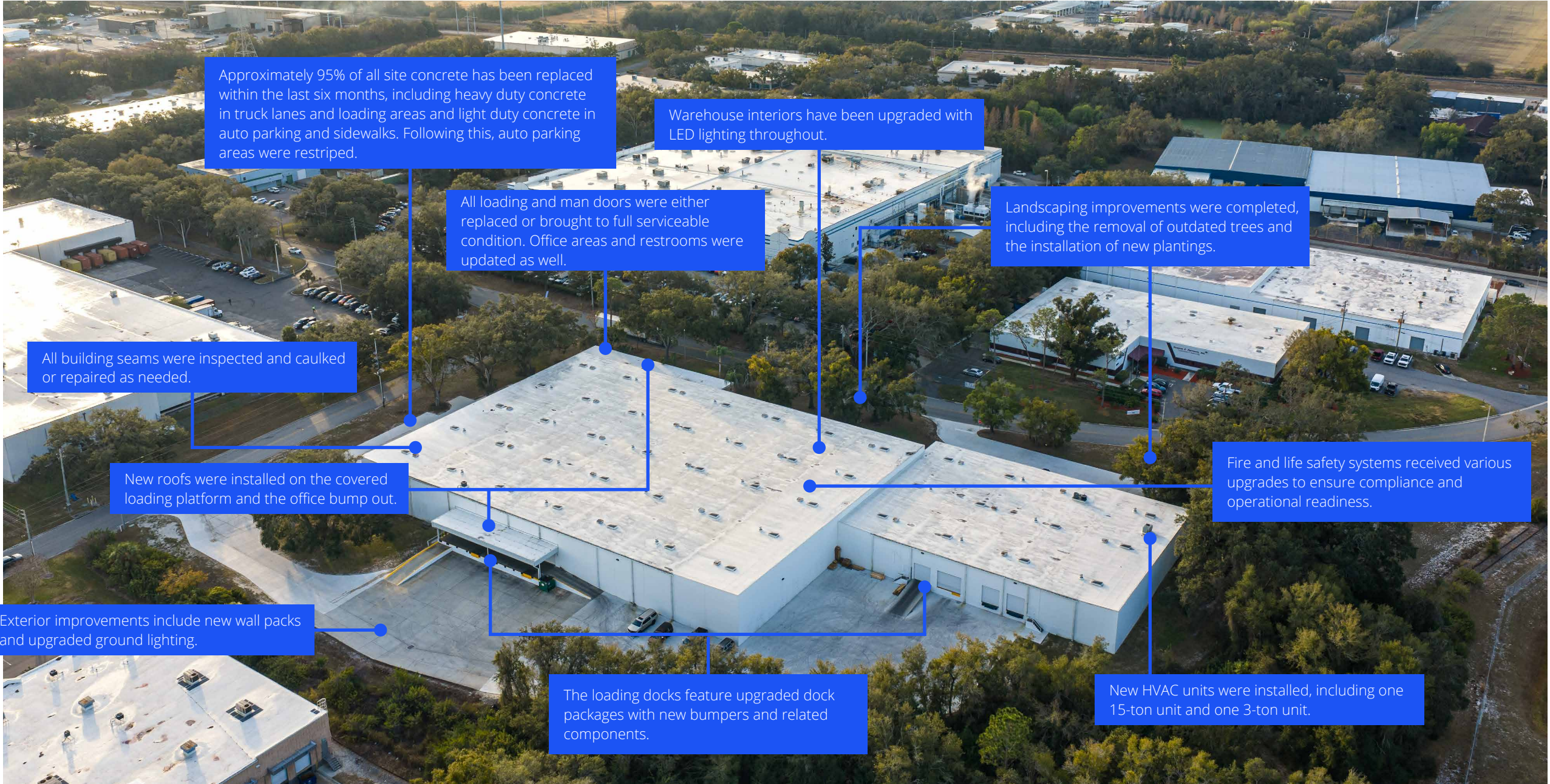
Building Breakdown

Suite A (West)	
SIZE (SF)	20,575
OFFICE (SF)	Main Office ±2,500 Additional Shipping & Receiving Office
CLEAR HEIGHT	16' - 18'
POWER	200amp, 120/280V, 3-phase
LOADING	2 dock-high doors (8' x 10') with new flush mount dock levelers (20,000 lbs.) 1 dock-high door (14' x 10') & 1 drive-in door (8' x 10')
AUTO PARKING	12 striped auto spaces
ACCESS	Independent auto parking off Queen Palm Drive and shared truck court access off Riga Blvd

Suite B (East)	
SIZE (SF)	60,000
OFFICE (SF)	Main Office ±5,500 Additional Shipping & Receiving Office
CLEAR HEIGHT	22'
POWER	600amp, 120/208V, 3-phase
LOADING	Covered dock loading platform with 3 dock-high doors (14' x 10'), 1 pit leveler, 1 drive-in & 1 van-high access
AUTO PARKING	15 striped auto spaces
ACCESS	Independent auto parking off Riga Blvd and shared truck court access off Riga Blvd



Recent Capital Improvements *Totaling ±\$1.5MM*



Approximately 95% of all site concrete has been replaced within the last six months, including heavy duty concrete in truck lanes and loading areas and light duty concrete in auto parking and sidewalks. Following this, auto parking areas were restriped.

Warehouse interiors have been upgraded with LED lighting throughout.

All loading and man doors were either replaced or brought to full serviceable condition. Office areas and restrooms were updated as well.

Landscaping improvements were completed, including the removal of outdated trees and the installation of new plantings.

All building seams were inspected and caulked or repaired as needed.

New roofs were installed on the covered loading platform and the office bump out.

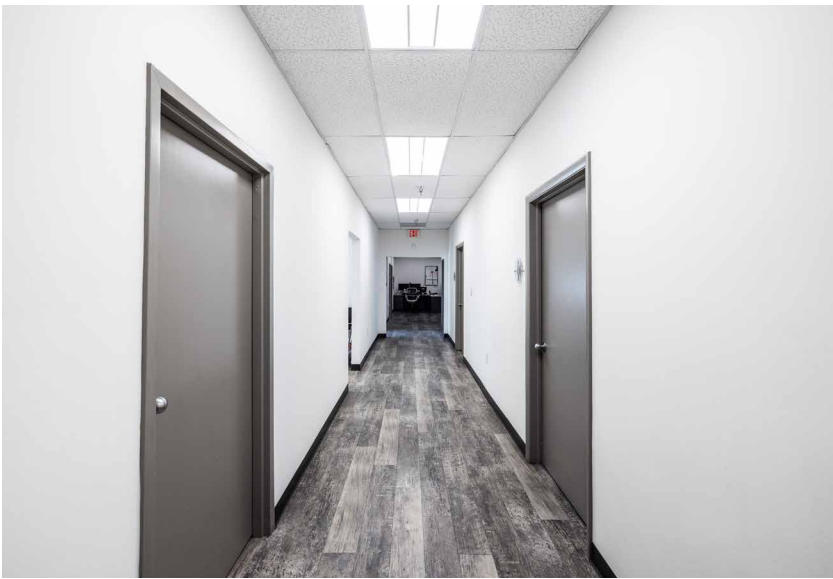
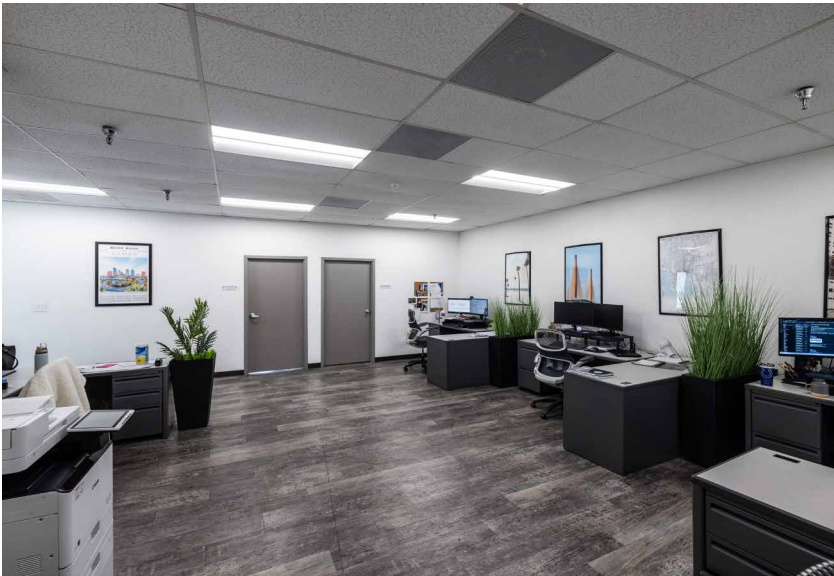
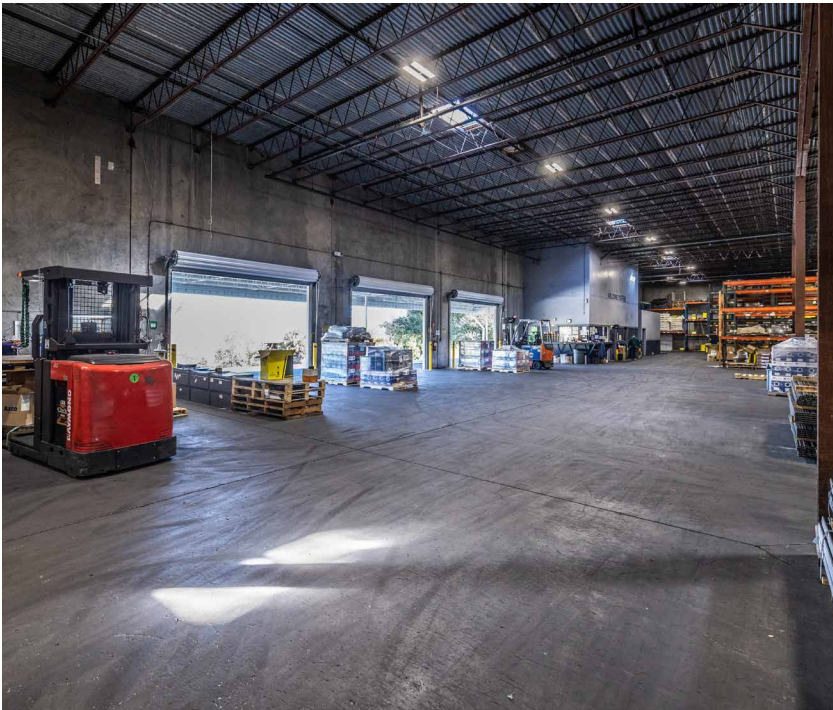
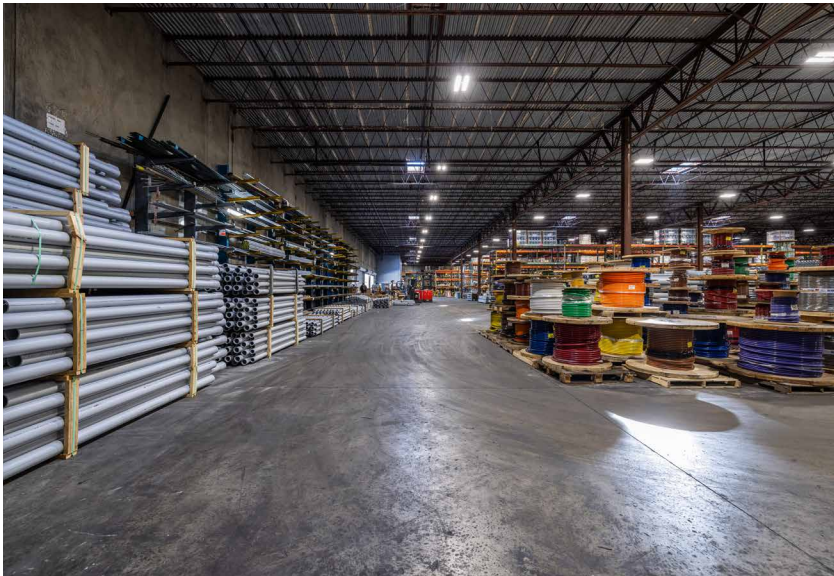
Fire and life safety systems received various upgrades to ensure compliance and operational readiness.

Exterior improvements include new wall packs and upgraded ground lighting.

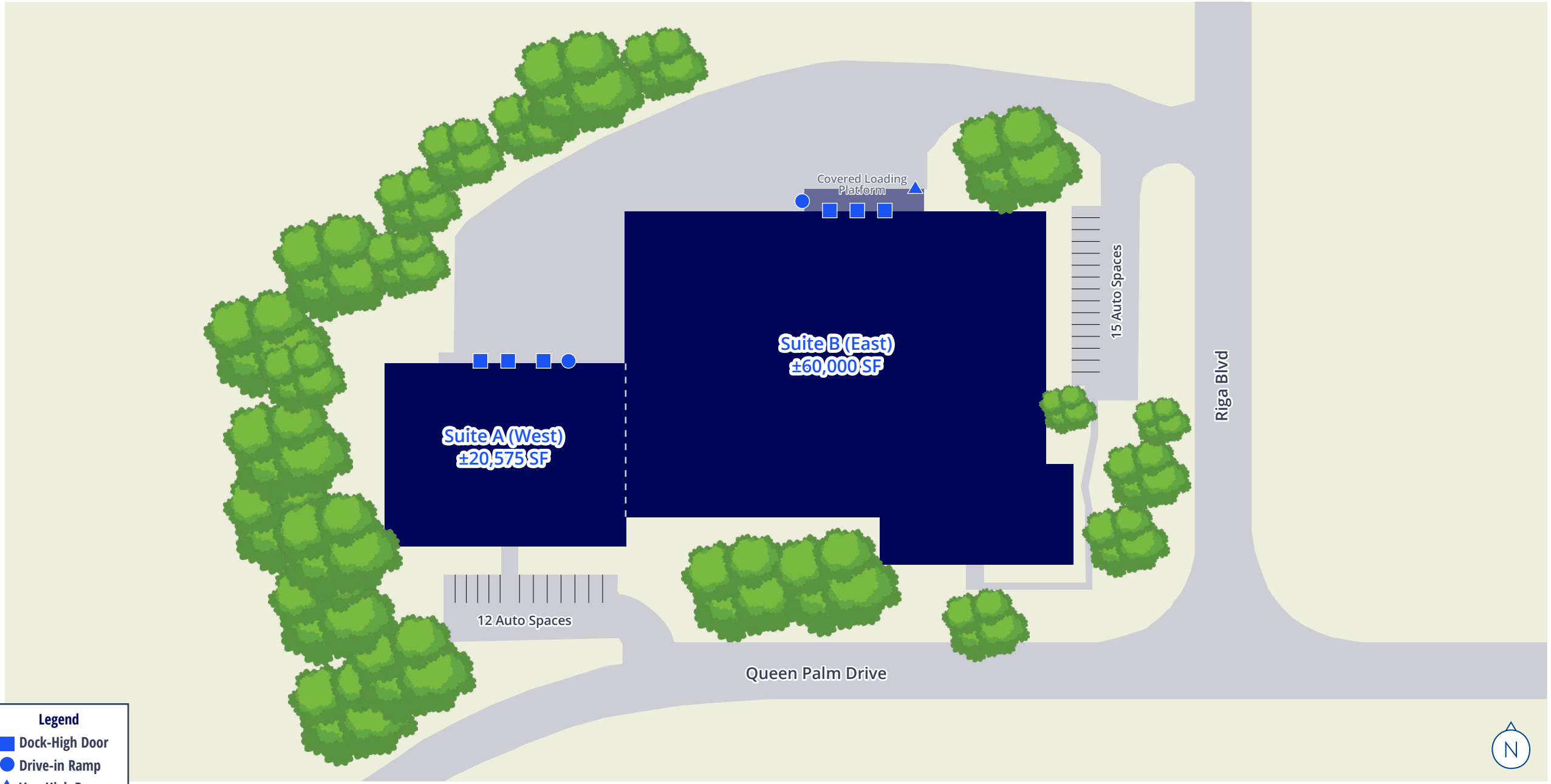
The loading docks feature upgraded dock packages with new bumpers and related components.

New HVAC units were installed, including one 15-ton unit and one 3-ton unit.

Interior Photos



Building Plan



Capital Markets & Structure Finance

Robyn Hurrell
Executive Vice President
+1 813 226 7540
robyn.hurrell@colliers.com

Nathan Lynch
Executive Vice President
+1 813 559 7009
nathan.lynch@colliers.com

Michael Sogluizzo
Associate
+1 813 344 6658
michael.sogluizzo@colliers.com

Market Leasing Advisors

Kyle Kidd
Vice President
+1 813 225 2027
kyle.kidd@colliers.com

Tom Quinlan
Vice President
+1 813 605 4462
tom.quinlan@colliers.com

Dominic Hewitt
Senior Associate
+1 813 871 8503
dominic.hewitt@colliers.com

[VIEW PROPERTY WEBSITE HERE](#)



This document has been prepared by Colliers for advertising and general information only. Colliers makes no guarantees, representations or warranties of any kind, expressed or implied, regarding the information including, but not limited to, warranties of content, accuracy and reliability. Any interested party should undertake their own inquiries as to the accuracy of the information. Colliers excludes unequivocally all inferred or implied terms, conditions and warranties arising out of this document and excludes all liability for loss and damages arising therefrom. This publication is the copyrighted property of Colliers and /or its licensor(s). © 2026. All rights reserved. This communication is not intended to cause or induce breach of an existing listing agreement. Colliers International Florida, LLC.