

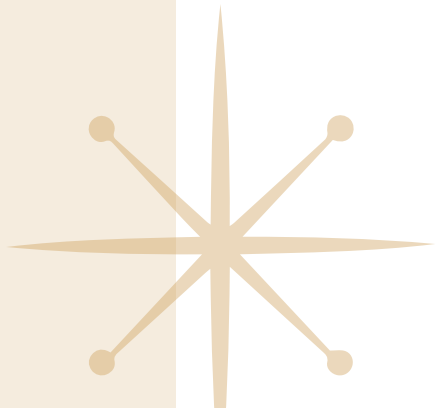
2200 6TH AVENUE | SEATTLE, WASHINGTON



# DENNY BUILDING

CLISE  
PROPERTIES  


 CUSHMAN &  
WAKEFIELD



# MID-CENTURY

## MODERN VIBES

Located on Sixth Avenue and across from Amazon's world headquarters, the Denny Building is uniquely positioned in the heart of the vibrant Denny Triangle neighborhood.

Built in 1968 and rejuvenated in 2011, the Denny Building presents a contemporary office environment with midcentury flair.



**184,609 RSF**

OFFICE SPACE

**12 FLOORS**

OF OFFICES

\* NATURAL LIGHT THROUGHOUT

\* ON-SITE TENANT AMENITIES

\* 15,000 SF FLOOR PLATES THAT CAN BE DEMISED FOR TENANTS OF ALL SIZES

\* CLOSE PROXIMITY TO POPULAR SHOPPING, DINING, HOTELS, AND MORE

\* QUICK ACCESS TO NORTH AND SOUTH-BOUND I-5 AND SR-99

\* WALKING DISTANCE TO THE WESTLAKE TRANSIT STATION, SOUTH LAKE UNION STREETCAR AND BUS ROUTES ALONG THE THIRD AVE. TRANSIT CORRIDOR

CLICK HERE TO  
VIEW AVAILABILITIES





# CONVENIENT AMENITIES

FOR A SEAMLESS WORKDAY

The Denny Building offers a host of on-site conveniences, including a large conference room, tenant showers, on-site engineering staff, and secure parking in an attached garage.

## BUILDING AMENITIES

- Attached parking garage (1.5:1,000)
- Access-controlled card key entry system
- Security personnel patrol during/after business hours and on weekends
- CCTV cameras throughout the property
- Large building conference room
- Building shower facilities
- On-site storage, including bike storage
- On-site building engineer
- Dog friendly





- WITHIN A 5-MIN WALK**
- Fitness
  - Food and Beverage
  - Shopping
  - Arts & Culture

# EMBRACE THE SEATTLE EXPERIENCE

Located in Seattle's downtown core, between bustling Pike Place Market and the city's vibrant retail district, the Denny Building is just steps away from restaurants, shops, attractions, hotels and many more of the Emerald City's most popular destinations.

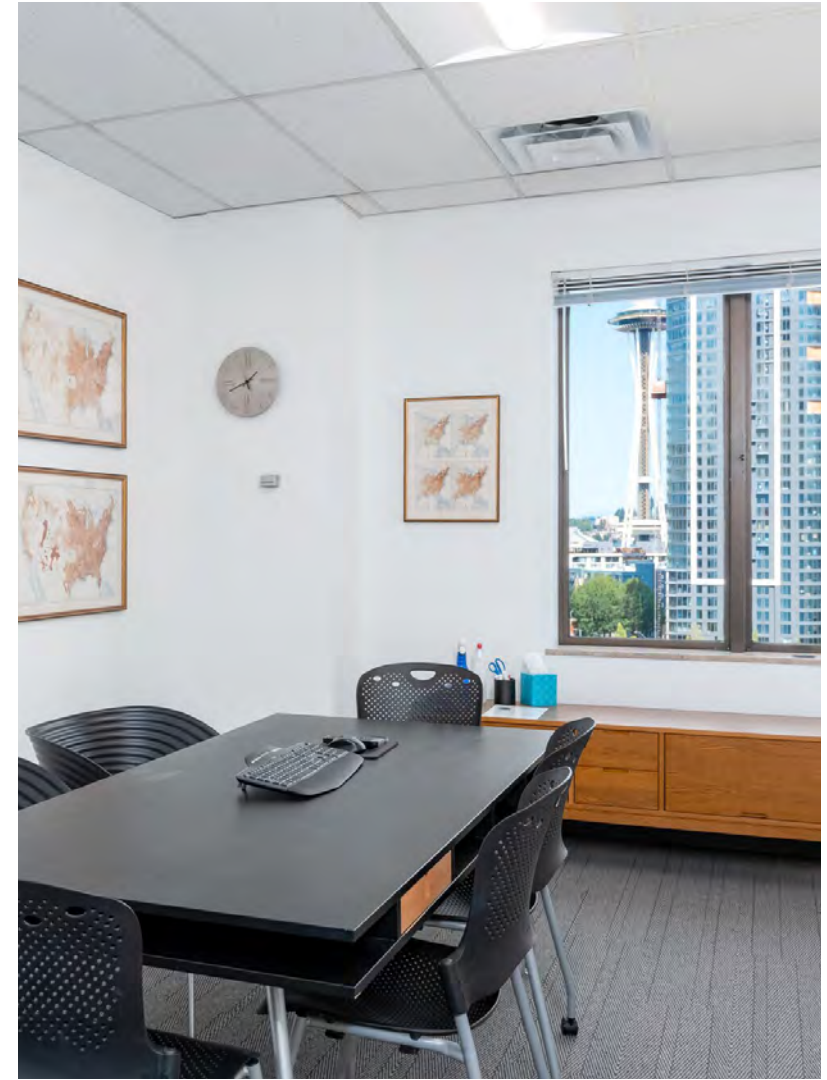
The Denny Building's central location also puts tenants in close proximity to Interstate 5 and Highway 99, while offering easy access to Westlake Center Transit Station, the Monorail, Seattle ferry terminals, and more transit options.





EXPLORE THE  
**NEIGHBORHOOD**



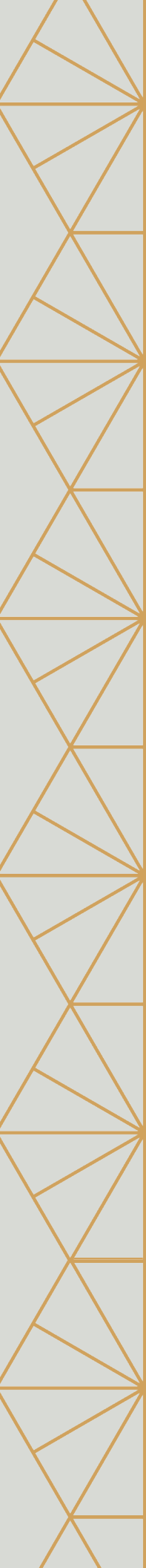


# BUILDING SEATTLE'S FUTURE SINCE 1889

**CLISE**  
PROPERTIES



Founded by JW Clise in the aftermath of the Great Seattle Fire, Clise Properties boasts a legacy marked by resilience and vision. Across four generations of leadership, the company has played a pivotal role in rebuilding the city from the ground up. Today, the Clise portfolio encompasses a collection of classic and contemporary assets across Seattle and the Pacific Northwest.





# DENNY BUILDING

[www.denny-building.com](http://www.denny-building.com)

## LEAH MASSON

Senior Director

+1 206 215 9803

[leah.masson@cushwake.com](mailto:leah.masson@cushwake.com)

## BRANDON BURMEISTER

Senior Director

+1 206 215 9702

[brandon.burmeister@cushwake.com](mailto:brandon.burmeister@cushwake.com)

CLISE  
PROPERTIES



 CUSHMAN &  
WAKEFIELD

©2024 Cushman & Wakefield. All rights reserved. The information contained in this communication is strictly confidential. This information has been obtained from sources believed to be reliable but has not been verified. NO WARRANTY OR REPRESENTATION, EXPRESS OR IMPLIED, IS MADE AS TO THE CONDITION OF THE PROPERTY (OR PROPERTIES) REFERENCED HEREIN OR AS TO THE ACCURACY OR COMPLETENESS OF THE INFORMATION CONTAINED HEREIN, AND SAME IS SUBMITTED SUBJECT TO ERRORS, OMISSIONS, CHANGE OF PRICE, RENTAL OR OTHER CONDITIONS, WITHDRAWAL WITHOUT NOTICE, AND TO ANY SPECIAL LISTING CONDITIONS IMPOSED BY THE PROPERTY OWNER(S). ANY PROJECTIONS, OPINIONS OR ESTIMATES ARE SUBJECT TO UNCERTAINTY AND DO NOT SIGNIFY CURRENT OR FUTURE PROPERTY PERFORMANCE. COE-PM-West-06.13.2024