

For Lease | Industrial

99-1265 Halawa Valley Street

Halawa Industrial Park

99-1265 Halawa Valley Street
Aiea, Hawaii 96701
www.cbre.com/hawaii



Contact Us

Jie Ming Xie (S)

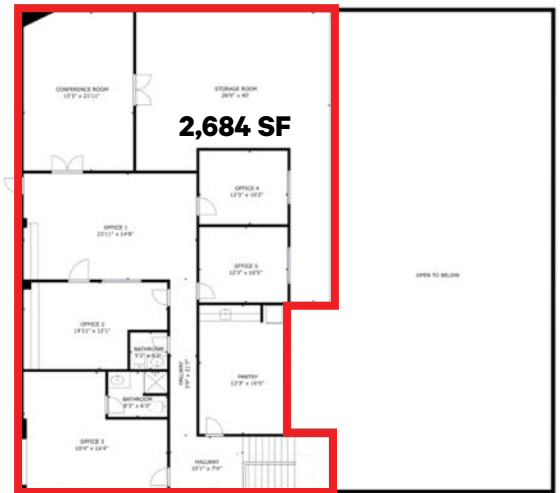
Senior Associate
+1 808 541 5154
jie.xie@cbre.com
Lic. RS-73904

Opportunity

Space Information

- Ceiling Height: 25'- 33'
- Base Rent: \$1.65/SF/Mo.
- CAM: \$0.50/SF/Mo.
- Available SF: 7,144-16,802 SF
- Warehouse and Office can be leased together or separately
- Sprinkler system
- Restroom in space
- Ample parking
- 3 roll up door access
- Street front signage
- Secured fenced parking lot

2nd Floor



1st Floor

Virtual Tour



Property Photos

The Warehouse



Property Photos

The Office Space





Property Video



Contact Us

Jie Ming Xie (S)

Senior Associate

+1 808 541 5154

jie.xie@cbre.com

Lic. RS-73904

CBRE, Inc. | RB-20142

© 2024 CBRE, Inc. All rights reserved. This information has been obtained from sources believed reliable, but has not been verified for accuracy or completeness. You should conduct a careful, independent investigation of the property and verify all information. Any reliance on this information is solely at your own risk. CBRE and the CBRE logo are service marks of CBRE, Inc. All other marks displayed on this document are the property of their respective owners, and the use of such logos does not imply any affiliation with or endorsement of CBRE. Photos herein are the property of their respective owners. Use of these images without the express written consent of the owner is prohibited.

JMX:RMP_ID54_99-1265HalawaValleySt_11.19.24

